

# 010-151<sup>Q&As</sup>

Supporting Cisco Data Center System Devices

## Pass Cisco 010-151 Exam with 100% Guarantee

Free Download Real Questions & Answers **PDF** and **VCE** file from:

<https://www.pass2lead.com/010-151.html>

100% Passing Guarantee  
100% Money Back Assurance

Following Questions and Answers are all new published by Cisco  
Official Exam Center

- ⚙️ **Instant Download** After Purchase
- ⚙️ **100% Money Back** Guarantee
- ⚙️ **365 Days** Free Update
- ⚙️ **800,000+** Satisfied Customers



**QUESTION 1**

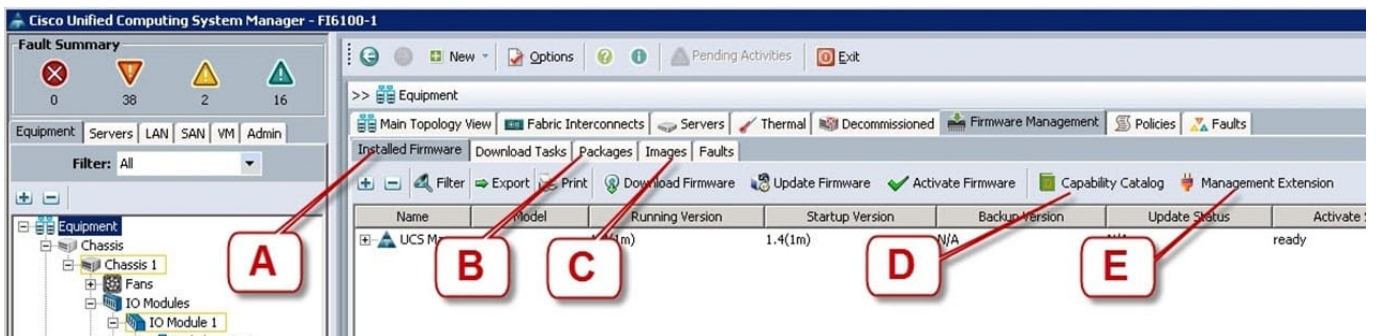
Which three statements about FCoE are true? (Choose three.)

- A. Allows Fibre Channel and Ethernet networks to share a single, integrated infrastructure.
- B. Encapsulates Fibre Channel frames into Ethernet frames, which allows them to run alongside traditional IP traffic.
- C. Increases capital costs due to the difficulty to manage.
- D. Consolidates I/O traffic in the data center.

Correct Answer: ABD

**QUESTION 2**

Refer to the exhibit.



Where is the best place to find the B200 BIOS version used in a specific Cisco UCS Manager version?

- A. A - Installed Firmware
- B. B - Packages
- C. C - Images
- D. D - Capability Catalog
- E. E - Management Extension

Correct Answer: B

**QUESTION 3**

Which two statements about Cisco UCS 6454 Fabric Interconnect are true? (Choose two.)

- A. 1-RU 10/25/40/100/200/400 Gigabit Ethernet, FCoE, and Fibre Channel switch offers up to 32 ports.
- B. It hosts and runs Cisco Integrated Management Controller (CIMC).
- C. All Ethernet ports can support FCoE.
- D. Provides the management and communication backbone for the Cisco UCS 5108 Server Chassis and Cisco UCS B-Series Blade Servers only.
- E. Provides both the LAN and SAN connectivity for all servers within its domain.

Correct Answer: CE

Reference: <https://www.cdw.com/product/cisco-ucs-6454-fabric-interconnect-switch-54-ports-managed-rack-mou/5400879>

---

#### QUESTION 4

When a host firmware package policy is created, what must it be associated with to upgrade the BIOS?

- A. blade or blade pool
- B. service profile
- C. boot policy
- D. service template

Correct Answer: B

---

#### QUESTION 5

On the Sensors page from the CIMC view, which four tabs are displayed to view further information? (Choose four.)

- A. Power Supply
- B. Fan
- C. Memory
- D. CPU
- E. LEDs
- F. Temperature

Correct Answer: ABEF

There are 2 more tabs: Voltage and Current

[010-151 Study Guide](#)

[010-151 Exam Questions](#)

[010-151 Braindumps](#)