

010-151^{Q&As}

Supporting Cisco Data Center System Devices

Pass Cisco 010-151 Exam with 100% Guarantee

Free Download Real Questions & Answers **PDF** and **VCE** file from:

<https://www.pass2lead.com/010-151.html>

100% Passing Guarantee
100% Money Back Assurance

Following Questions and Answers are all new published by Cisco
Official Exam Center

-  **Instant Download** After Purchase
-  **100% Money Back** Guarantee
-  **365 Days** Free Update
-  **800,000+** Satisfied Customers



QUESTION 1

The screenshot displays the Cisco Integrated Management Controller (CIMC) interface for a UCS C240 M4S server. The left sidebar contains navigation options: Chassis, Inventory, Sensors, Power Management, Faults and Logs, Compute, Networking, Storage, and Admin. The main content area is titled 'Cisco Integrated Management Controller (Cisco IMC) Information' and includes fields for Product Name, Serial Number, PID, UUID, BIOS Version, Description, Asset Tag, HostName, IP Address, MAC Address, Firmware Version, Current Time (UTC), Local Time, and Timezone. Below this, there are two sections: 'Chassis Status' with indicators for Power State, Overall Server Status, Temperature, Overall DIMM Status, Power Supplies, Fans, Locator LED, and Overall Storage Status; and 'Server Utilization' with a bar chart showing Overall Utilization, CPU Utilization, Memory Unknown, and IO-Utilization.

Refer to the exhibit. Which item does D represent?

- A. Pin icon (prevents Navigation pane from sliding)
- B. Favorite icon (make any specific work pane in the application as your favorite)
- C. To view the Navigation pane
- D. Index Icon (view listing in alphabetical order)

Correct Answer: A

Reference:

https://www.cisco.com/c/en/us/td/docs/unified_computing/ucs/c/sw/gui/config/guide/4_1/b_Cisco_UCS_C-series_GUI_configuration_Guide_41/b_Cisco_UCS_C-series_GUI_configuration_Guide_41_chapter_01.html

QUESTION 2

Which three statements about powering down a Cisco UCS C-Series Rack-Mount Server to perform maintenance or replacement are true? (Choose three.)

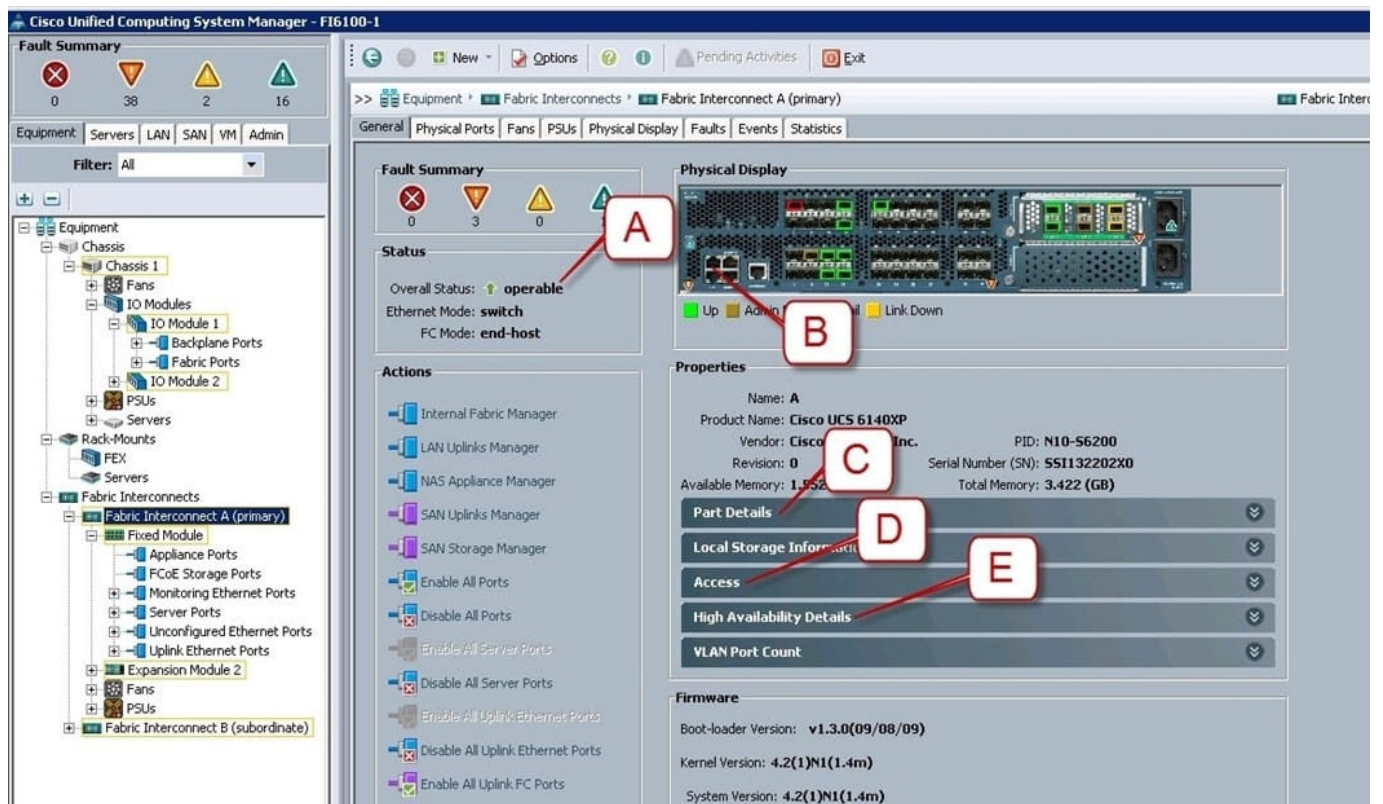
- A. Standby power mode: Power is supplied only to the service processor and the cooling fans, and it is safe to power off the server from this mode.
- B. Power status LED. Green indicates that the server is in main power mode and can be safely powered off.
- C. Graceful shutdown: Press and release the power button. The operating system performs a graceful shutdown, and the server goes to standby mode, which is indicated by an amber power status LED.

- D. Disconnect the power cords from the power supplies in your server to completely power off the server.
- E. Only an emergency shutdown can be performed using the power button on the server front panel.
- F. The Cisco UCS C-Series Rack-Mount Server has only one power mode.

Correct Answer: ACD

QUESTION 3

Refer to the exhibit.



Where is the best place to see whether the system is ready for a Fabric Interconnect failover?

- A. A - Overall Status operable
- B. B - L1 Connection
- C. C - Part Details
- D. D - Access
- E. E - High Availability Details

Correct Answer: E

QUESTION 4

Which command-line interface mode is best described by this prompt? Switch (config) #

- A. Local management mode
- B. EXEC mode
- C. Boot mode
- D. Global configuration command mode

Correct Answer: D

QUESTION 5

If the Overall Status for a Cisco UCS B-Series Blade Server indicates a failure in the Cisco UCS Manager, such as discovery-failed, which statement is true?

- A. The server shuts down.
- B. The server automatically reboots reboot in 3 minutes.
- C. The endpoints on that server cannot be upgraded.
- D. The server is online, but the administrator cannot assign a service profile to that blade.

Correct Answer: C

[010-151 VCE Dumps](#)

[010-151 Study Guide](#)

[010-151 Braindumps](#)