

050-708^{Q&As}

SUSE Linux Enterprise Desktop 10 Administration

Pass Novell 050-708 Exam with 100% Guarantee

Free Download Real Questions & Answers **PDF** and **VCE** file from:

<https://www.pass2lead.com/050-708.html>

100% Passing Guarantee
100% Money Back Assurance

Following Questions and Answers are all new published by Novell
Official Exam Center

- ⚙️ **Instant Download** After Purchase
- ⚙️ **100% Money Back** Guarantee
- ⚙️ **365 Days** Free Update
- ⚙️ **800,000+** Satisfied Customers



QUESTION 1

When configuring an SSH server, where is the configuration file stored?

- A. /lib/ssh/sshd_config
- B. /bin/ssh/sshd_config
- C. /etc/ssh/sshd_config
- D. /root/ssh/sshd_config
- E. /sbin/ssh/sshd_config

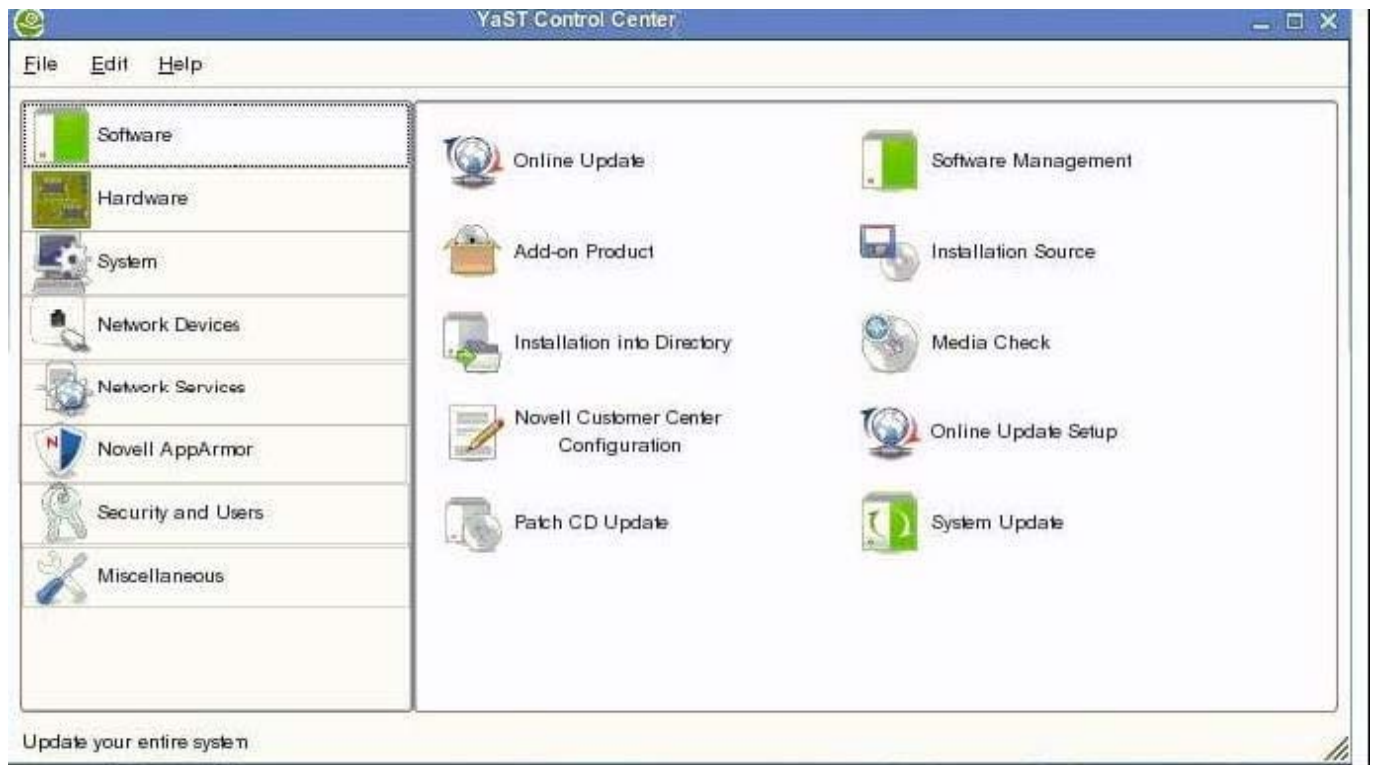
Correct Answer: C

QUESTION 2

Click the Point-and-Click button to begin.

Click on the option or icon that will allow you to configure SuSEfirewall2.

Hot Area:



Correct Answer:



QUESTION 3

How can you switch between virtual terminals on your computer?

- A. Fx
- B. SHFT-Fx
- C. CTRL-Fx
- D. CTRL-ALT-Fx
- E. The TAB key

Correct Answer: D

QUESTION 4

Refer to the information listed below.

SMB server: Fileserver

Directory: /data

Which command will mount the share "data" of the SMB server Fileserver into the /mnt directory?

- A. mount /mnt //Fileserver/data
- B. mount -t //Fileserver/data /mnt
- C. mount -cifs //Fileserver/data /mnt
- D. mount -t cifs //Fileserver/data /mnt

Correct Answer: D

QUESTION 5

Which file can you look at to see the character and block devices used on your Linux system?

- A. /etc/devices
- B. /srv/devices
- C. /sys/devices
- D. /boot/devices
- E. /proc/devices

Correct Answer: E

[Latest 050-708 Dumps](#)

[050-708 VCE Dumps](#)

[050-708 Practice Test](#)