



100-105^{Q&As}

Interconnecting Cisco Networking Devices Part 1 (ICND1)

Pass Cisco 100-105 Exam with 100% Guarantee

Free Download Real Questions & Answers **PDF** and **VCE** file from:

<https://www.pass4lead.com/100-105.html>

100% Passing Guarantee
100% Money Back Assurance

Following Questions and Answers are all new published by Cisco
Official Exam Center

-  **Instant Download** After Purchase
-  **100% Money Back** Guarantee
-  **365 Days** Free Update
-  **800,000+** Satisfied Customers





QUESTION 1

Click on the correct location or locations in the exhibit.

This task requires the use of various **show** commands from the CLI of Router1 to answer 5 multiple-choice questions. This does **not** require any configuration.

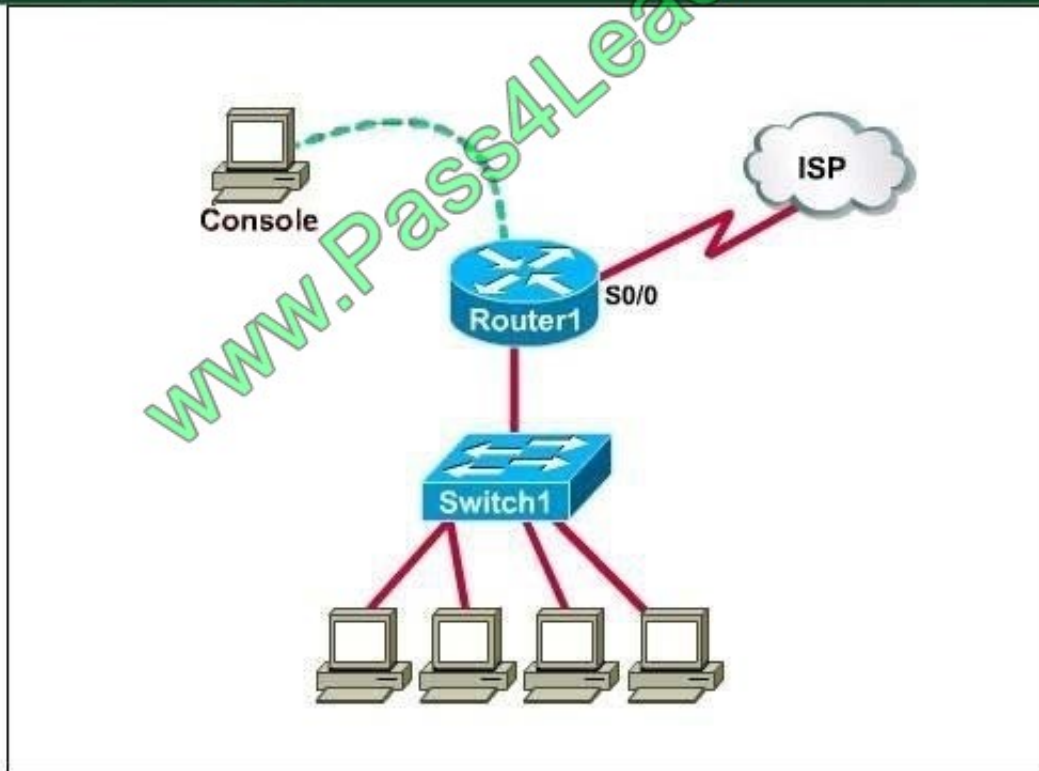
NOTE: The show running-configuration and the show startup-configuration commands have been disabled in this simulation.

To access the multiple-choice questions, click on the numbered boxes on the right of the top panel.

There are 5 multiple-choice questions with this task. Be sure to answer all 5 questions before leaving this item.

eSim Professional v1.0.1.9

00:00:58



What is the subnet broadcast address of the LAN connected to Router1?

- A. 192.168.200.15
- B. 192.168.200.31
- C. 192.168.200.63



D. 192.168.200.127

E. 255.255.255.255

Correct Answer: B

User the "show ip interface brief" command User the "show interface fa0/1" command

```
CiscoTerminal
Press RETURN to get started.

Router1>en
Router1#show ip int brief
Interface          IP-Address      OK? Method Status        Protocol
FastEthernet0/0    unassigned      YES unset    administratively down  down
FastEthernet0/1    192.168.200.23 YES manual    up            up
Serial0/0          10.11.12.13     YES manual    administratively down  down
Serial0/1          unassigned      YES unset    administratively down  down
Router1#_
```



```
CiscoTerminal
Router1#show int fa0/1
FastEthernet0/1 is Up, line protocol is Up
  Hardware is Lance, address is 0010.7b81.4e2d(bia 0010.7b81.4e2d)
  Internet address is 192.168.200.23/28
  MTU 1500 bytes, BW 100000 Kbit, DLY 100 usec,
    reliability 255/255, txload 1/255, rxload 1/255
  Encapsulation ARPA, loopback not set
  Keepalive set (10 sec)
  Full-duplex, 100Mb/s, 100BaseTX/FX
  ARP type: ARPA, ARP Timeout 04:00:00
  Last input 00:00:27, output 00:00:02, output hang never
  Last clearing of "show interface" counters never
  Queueing strategy: fifo
  output queue 0/40, 0 drops ; input queue 0/75, 0 drops
  5 minute input rate 0 bits/sec, 0 packets/sec
  5 minute output rate 0 bits/sec, 0 packets/sec
    3581 packets input, 120219 bytes, 0 no buffer
      Received 3581 broadcasts, 0 runts, 0 giants, 0 throttles
    0 input errors, 0 CRC, 0 frame, 0 overrun, 0 ignored, 0 abort
    0 input packets with dribble condition detected
  24213 packets output, 2101260 bytes, 0 underruns
    0 output errors, 0 collisions, 12 interface resets
    0 babbles, 0 late collision, 0 deferred
--More--
```

From the output we learn that the ip address of the FastEthernet0/1 interface of Router1 is 192.168.200.23 and the subnet mask is /28. -> The broadcast address of this subnetwork is 192.168.200.31

QUESTION 2

Which three commands must you enter to create a trunk that allows VLAN 20? (Choose three)

- A. Switch(config-if)#switchport mode dynamic auto
- B. Switch(config-if)#switchport mode trunk
- C. Switch(config-if)#switchport trunk allowed vlan 20
- D. Switch(config-if)#switchport mode dynamic desirable
- E. Switch(config-if)#switchport trunk encapsulation dot1q
- F. Switch(config-if)#switchport trunk native vlan 20

Correct Answer: BCE

QUESTION 3

Some routers have been configured with default routes. What are some of the advantages of using default routes? (Choose two)



- A. They establish routes that will never go down.
- B. They keep routing tables small.
- C. They require a great deal of CPU power.
- D. They allow connectivity to remote networks that are not in the routing table.
- E. They direct traffic from the internet into corporate networks.

Correct Answer: BD

Cisco administration 101: What you need to know about default routes <http://www.techrepublic.com/article/cisco-administration-101-what-you-need-to-know-about-default-routes/>

QUESTION 4



Instructions

You can click on the grey buttons below to view the different windows.

Each of the windows can be minimized by clicking on the [-]. You can also reposition a window by dragging it by the title bar.

The "Tab" key and most commands that use the "Control" or "Escape" keys are not supported and are not necessary to complete this simulation.

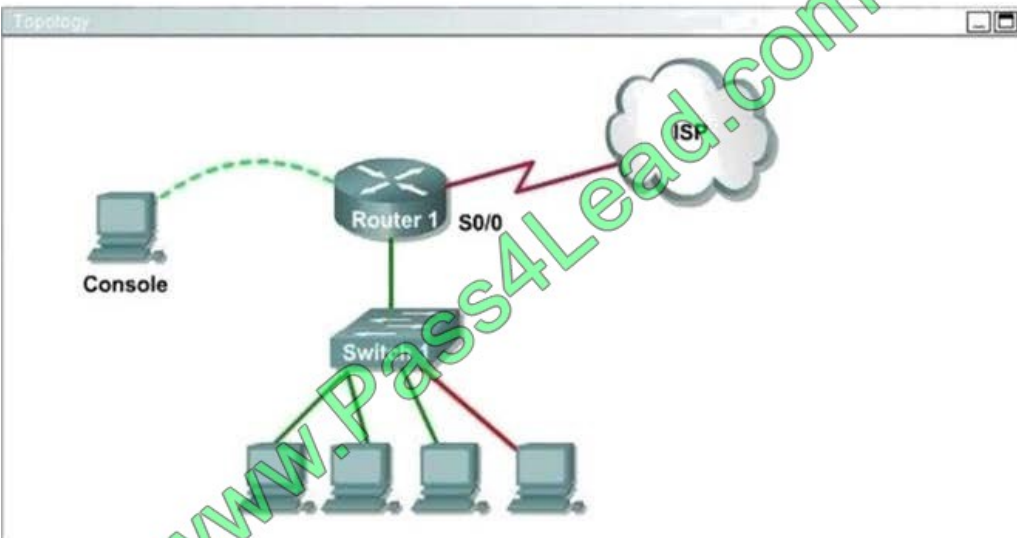
Scenario

This task requires the use of various **show** commands from the CLI of Router1 to answer four multiple-choice questions. This task does **not** require any configuration.

NOTE: The show running-configuration and the show startup-configuration commands have been disabled in this simulation.

To access the multiple-choice questions, click on the numbered boxes on the right of the top panel.

There are 4 multiple-choice questions with this task. Be sure to answer all 4 questions before leaving this item.



R1

```
Press RETURN to get started!  
Router1>
```



What interfaces on Router1 have not had any configurations applied? (Choose two.)

- A. Ethernet 0
- B. FastEthernet 0/0
- C. FastEthernet 0/1
- D. Serial 0
- E. Serial 0/0
- F. Serial 0/1

Correct Answer: BF

User the "show ip interface brief" command

Notice that Router1 does not have Ethernet 0 and Serial 0 interfaces. FastEthernet 0/1 and Serial 0/0 were configured with their IP addresses therefore only FastEthernet 0/0 and Serial0/1 have not had any configurations applied.

```
CiscoTerminal
Press RETURN to get started.

Router1>en
Router1#show ip int brief
Interface          IP-Address      OK? Method Status        Protocol
FastEthernet0/0    unassigned      YES unset    administratively down  down
FastEthernet0/1    192.168.200.23  YES manual    up            up
Serial0/0           10.11.12.13     YES manual    administratively down  down
Serial0/1           unassigned      YES unset    administratively down  down
Router1#_
```

QUESTION 5

What does the "Inside Global" address represent in the configuration of NAT?

- A. the summarized address for all of the internal subnetted addresses
- B. the MAC address of the router used by inside hosts to connect to the Internet



C. a globally unique, private IP address assigned to a host on the inside network

D. a registered address that represents an inside host to an outside network

Correct Answer: D

NAT: Local and Global Definitions

http://www.cisco.com/en/US/tech/tk648/tk361/technologies_tech_note09186a0080094837.shtml

Cisco defines these terms as:

Inside local address - The IP address assigned to a host on the inside network. This is the address configured as a parameter of the computer OS or received via dynamic address allocation protocols such as DHCP. The address is likely not

a legitimate IP address assigned by the Network Information Center (NIC) or service provider. Inside global address - A legitimate IP address assigned by the NIC or service provider that represents one or more inside local IP addresses to the outside world.

Outside local address - The IP address of an outside host as it appears to the inside network. Not necessarily a legitimate address, it is allocated from an address space routable on the inside.

Outside global address - The IP address assigned to a host on the outside network by the host owner. The address is allocated from a globally routable address or network space. These definitions still leave a lot to be interpreted. For this

example, this document redefines these terms by first defining local address and global address. Keep in mind that the terms inside and outside are NAT definitions. Interfaces on a NAT router are defined as inside or outside with the NAT

configuration commands, ip nat inside destination and ip nat outside source. Networks to which these interfaces connect can then be thought of as inside networks or outside networks, respectively.

Local address--A local address is any address that appears on the inside portion of the network.

Global address - A global address is any address that appears on the outside portion of the network.

[100-105 PDF Dumps](#)

[100-105 VCE Dumps](#)

[100-105 Practice Test](#)



To Read the [Whole Q&As](#), please purchase the [Complete Version](#) from [Our website](#).

Try our product !

100% Guaranteed Success

100% Money Back Guarantee

365 Days Free Update

Instant Download After Purchase

24x7 Customer Support

Average 99.9% Success Rate

More than 800,000 Satisfied Customers Worldwide

Multi-Platform capabilities - [Windows](#), [Mac](#), [Android](#), [iPhone](#), [iPod](#), [iPad](#), [Kindle](#)

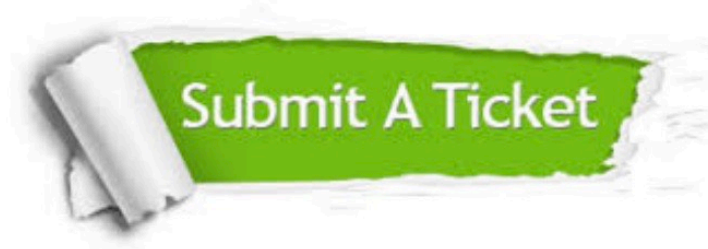
We provide exam PDF and VCE of Cisco, Microsoft, IBM, CompTIA, Oracle and other IT Certifications. You can view Vendor list of All Certification Exams offered:

<https://www.pass4lead.com/allproducts>

Need Help

Please provide as much detail as possible so we can best assist you.

To update a previously submitted ticket:



 <p>One Year Free Update Free update is available within One Year after your purchase. After One Year, you will get 50% discounts for updating. And we are proud to boast a 24/7 efficient Customer Support system via Email.</p>	 <p>Money Back Guarantee To ensure that you are spending on quality products, we provide 100% money back guarantee for 30 days from the date of purchase.</p>	 <p>Security & Privacy We respect customer privacy. We use McAfee's security service to provide you with utmost security for your personal information & peace of mind.</p>
---	---	--

Any charges made through this site will appear as Global Simulators Limited.

All trademarks are the property of their respective owners.

Copyright © pass4lead, All Rights Reserved.