

156-115.77^{Q&As}

Check Point Certified Security Master

Pass CheckPoint 156-115.77 Exam with 100% Guarantee

Free Download Real Questions & Answers **PDF** and **VCE** file from:

<https://www.pass2lead.com/156-115-77.html>

100% Passing Guarantee
100% Money Back Assurance

Following Questions and Answers are all new published by CheckPoint Official Exam Center

- ⚙️ **Instant Download** After Purchase
- ⚙️ **100% Money Back** Guarantee
- ⚙️ **365 Days** Free Update
- ⚙️ **800,000+** Satisfied Customers



QUESTION 1

Compare these two images to establish which blade/feature was disabled on the firewall.



Before

```
[Expert@fw1:0]# fw ctl chain
in chain (16):
0: -7f300000 (c26a9c70) (ffffffff) IP Options Strip (in) (ipopt_strip)
1: - 20000000 (c183b020) (00000003) vpn decrypt (vpn)
2: - 1ffffff6 (c1846080) (00000001) l2tp inbound (l2tp)
3: - 1ffffff6 (c26ab420) (00000001) Stateless verifications (in) (asm)
4: - 1ffffff2 (c1862a60) (00000003) vpn tagging inbound (tagging)
5: - 1ffffff0 (c1838700) (00000003) vpn decrypt verify (vpn_ver)
6: - 10000000 (c2728940) (00000003) SecureXL conn sync (secxl_sync)
7: 0 (c2654220) (00000001) fw VM inbound (fw)
8: 1 (c26cb2b0) (00000002) wire VM inbound (wire_vm)
9: 20000000 (c1839b90) (00000003) vpn policy inbound (vpn_pol)
10: 10000000 (c2726e40) (00000003) SecureXL inbound (secxl)
11: 7f600000 (c269f2b0) (00000001) fw SCV inbound (scv)
12: 7f730000 (c2835210) (00000001) passive streaming (in) (pass_str)
13: 7f750000 (c2a2b3f0) (00000001) TCP streaming (in) (cpas)
14: 7f800000 (c26aa010) (ffffffff) IP Options Restore (in) (ipopt_res)
15: 7fb00000 (c2db29f0) (00000001) HA Forwarding (ha_for)
out chain (14):
0: -7f300000 (c26a9c70) (ffffffff) IP Options Strip (out) (ipopt_strip)
1: - 1ffffff6 (c1837fc0) (00000003) vpn nat outbound (vpn_nat)
2: - 1ffffff0 (c2a2b270) (00000001) TCP streaming (out) (cpas)
3: - 1ffffff50 (c2835210) (00000001) passive streaming (out) (pass_str)
4: - 1ff00000 (c1862a60) (00000003) vpn tagging outbound (tagging)
5: - 1ff00000 (c26ab420) (00000001) Stateless verifications (out) (asm)
6: 0 (c2654220) (00000001) fw VM outbound (fw)
7: 1 (c26cb2b0) (00000002) wire VM outbound (wire_vm)
8: 20000000 (c18381c0) (00000003) vpn policy outbound (vpn_pol)
9: 10000000 (c2726e40) (00000003) SecureXL outbound (secxl)
10: 1ffffff0 (c1845a30) (00000001) l2tp outbound (l2tp)
11: 20000000 (c183ba60) (00000003) vpn encrypt (vpn)
12: 7f700000 (c2a2d840) (00000001) TCP streaming post VM (cpas)
13: 7f800000 (c26aa010) (ffffffff) IP Options Restore (out) (ipopt_res)
```

After

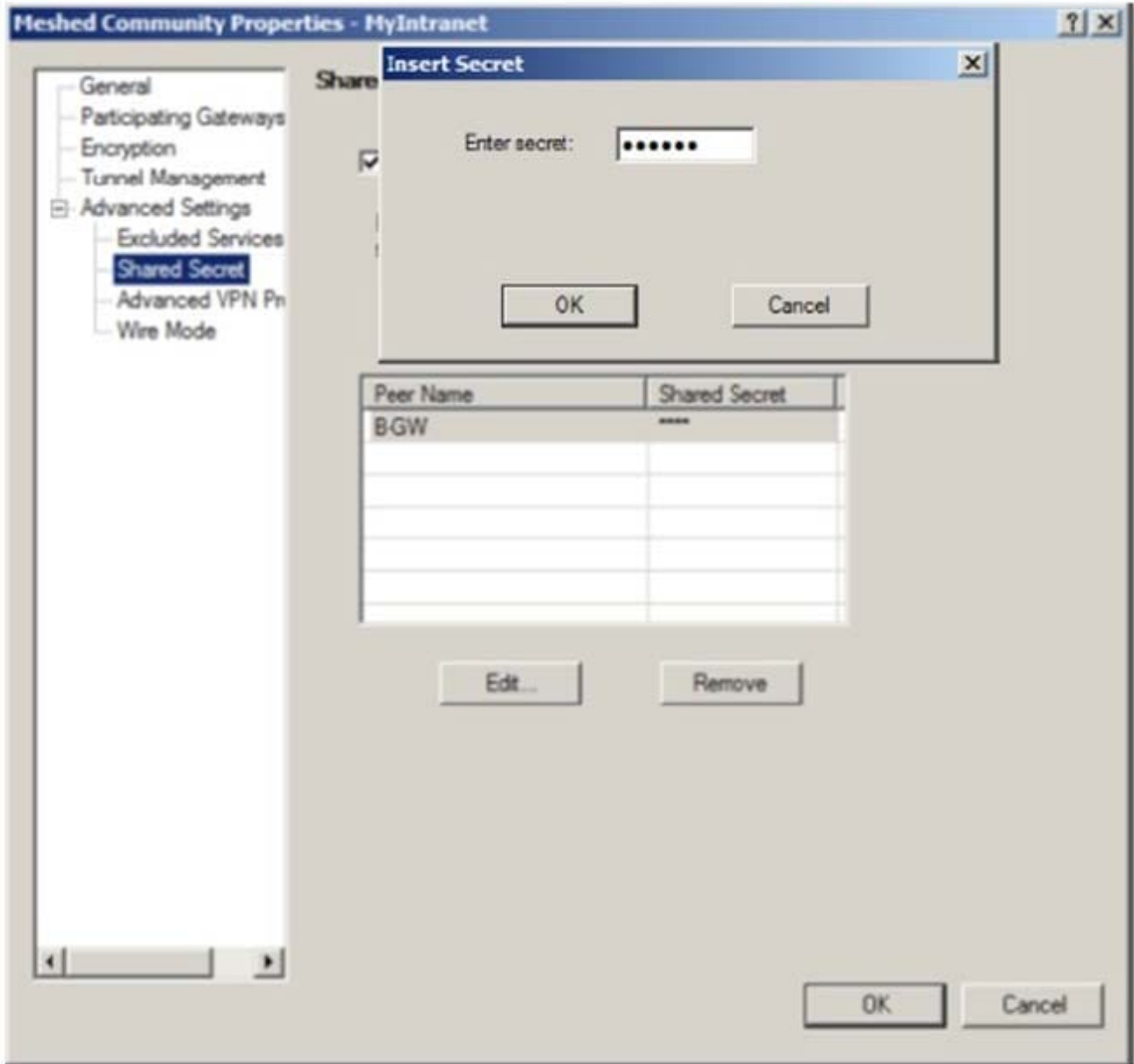
```
[Expert@fw1:0]# fw ctl chain
in chain (11):
0: -7f300000 (c26a9c70) (ffffffff) IP Options Strip (in) (ipopt_strip)
1: - 1ffffff6 (c26ab420) (00000001) Stateless verifications (in) (asm)
2: - 10000000 (c1728940) (00000003) SecureXL conn sync (secxl_sync)
3: 0 (c2654220) (00000001) fw VM inbound (fw)
4: 1 (c26cb2b0) (00000002) wire VM inbound (wire_vm)
5: 10000000 (c1726e40) (00000003) SecureXL inbound (secxl)
6: 7f300000 (c169f2b0) (00000001) fw SCV inbound (scv)
7: 7f730000 (c2835210) (00000001) passive streaming (in) (pass_str)
8: 7f750000 (c1a2b3f0) (00000001) TCP streaming (in) (cpas)
9: 7f300000 (c26aa010) (ffffffff) IP Options Restore (in) (ipopt_res)
10: 7fb00000 (c2db29f0) (00000001) HA Forwarding (ha_for)
out chain (9):
0: -7f300000 (c26a9c70) (ffffffff) IP Options Strip (out) (ipopt_strip)
1: - 1ffffff0 (c1a2b270) (00000001) TCP streaming (out) (cpas)
2: - 1ffffff50 (c2835210) (00000001) passive streaming (out) (pass_str)
3: - 1ff00000 (c26ab420) (00000001) Stateless verifications (out) (asm)
4: 0 (c2654220) (00000001) fw VM outbound (fw)
5: 1 (c26cb2b0) (00000002) wire VM outbound (wire_vm)
6: 10000000 (c1726e40) (00000003) SecureXL outbound (secxl)
7: 7f700000 (c1a2d840) (00000001) TCP streaming post VM (cpas)
8: 7f300000 (c26aa010) (ffffffff) IP Options Restore (out) (ipopt_res)
```

- A. IPS
- B. VPN
- C. NAT
- D. L2TP

Correct Answer: B

QUESTION 2

You are setting up VPN between two gateways Local-GW and New-GW and want to use shared secret. For some reason New-GW is not showing up in the shared secret properties under mesh community properties. What is the most likely reason why the New-GW is not displayed?



- A. Gateway is locally managed by the same management station as Local-GW and shared secret is not supported for this configuration
- B. New-GW has to have Advanced properties > shared secret enabled.
- C. You need to install database by selecting Policy > Install database before gateway can be added.
- D. Gateway is 600 appliance and does not support "shared secret" option.

Correct Answer: A

QUESTION 3

You issue the command `fwaccel stat` and see the following: What is a possible reason that the "accept templates" is disabled?



```
[Expert@SPLAT1]# fwaccel stat
Accelerator Status : on
Accept Templates   : disabled by Firewall
                   : disabled from rule #1
Drop Templates     : disabled
NAT Templates      : disabled by user

Accelerator Features : Accounting, NAT, Cryptography, Routing,
                     HasClock, Templates, Synchronous, IdleDetection,
                     Sequencing, TcpStateDetect, AutoExpire,
                     DelayedNotif, TcpStateDetectV2, CPLS, McastRouting,
                     WireMode, DropTemplates, NatTemplates,
                     Streaming, MultiFW, AntiSpoofing, ViolationStats,
                     Nac, AsynchronicNotif, ERDOS, McastRoutingV2
Cryptography Features : Tunnel, UDPEncapsulation, MD5, SHA1, NULL,
                       3DES, DES, CAST, CAST-40, AES-128, AES-256,
                       ESP, LinkSelection, DynamicVPN, NatTraversal,
                       EncRouting, AES-XCBC, SHA256

[Expert@SPLAT1]# █
```

©2014 CheckPoint Software Technologies Ltd. 15

- A. Rule one is a drop rule.
- B. Rule one uses static NAT.
- C. Rule one contains a time object.
- D. Your administrator has not enabled templating.

Correct Answer: C

QUESTION 4

Your Customer would like to enable IPS in his Corporate Cluster, but he is concerned about high CPU usage because if the IPS inspection. What feature would you configure to disable inspection if a high CPU usage develops?

- A. It is not possible. In this case no enable IPS
- B. Bypass Under Load. (In IPS Option on Gateway Properties)
- C. Bypass Inspection. (In IPS Option on Gateway Properties)
- D. Disable Inspection. (In IPS Option on Gateway Properties)

Correct Answer: B

QUESTION 5

What is the log file that shows the processes that participate in the tunnel initiation stage?

- A. \$FWDIR/log/ikev2.xml
- B. \$FWDIR/log/ike.xml
- C. \$FWDIR/log/vpnd.elg
- D. \$FWDIR/log/ike.elg

Correct Answer: C

[156-115.77 PDF Dumps](#)

[156-115.77 VCE Dumps](#)

[156-115.77 Study Guide](#)