

# 156-215.77<sup>Q&As</sup>

Check Point Certified Security Administrator

## Pass CheckPoint 156-215.77 Exam with 100% Guarantee

Free Download Real Questions & Answers **PDF** and **VCE** file from:

<https://www.pass2lead.com/156-215-77.html>

100% Passing Guarantee  
100% Money Back Assurance

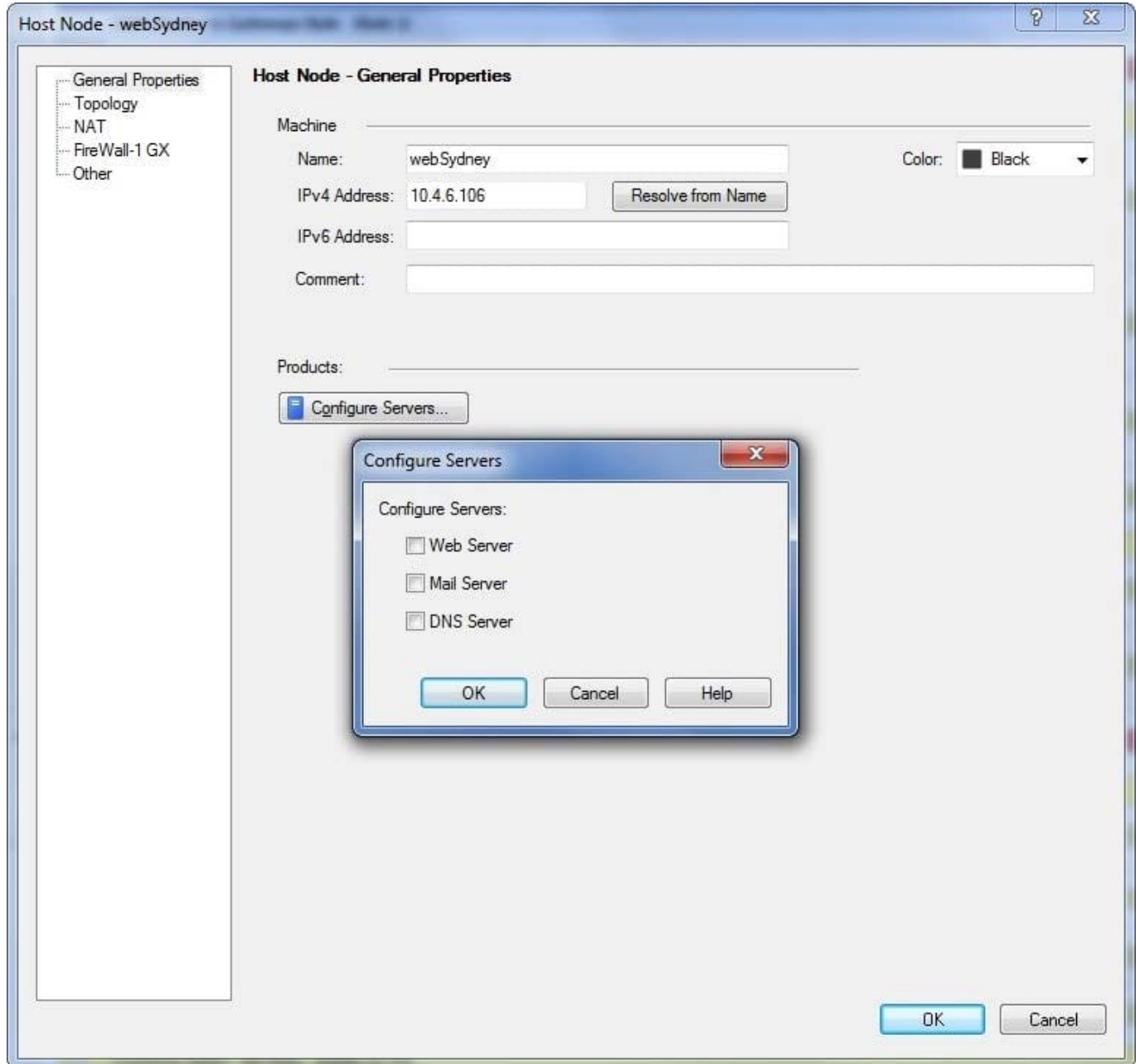
Following Questions and Answers are all new published by CheckPoint Official Exam Center

-  **Instant Download** After Purchase
-  **100% Money Back** Guarantee
-  **365 Days** Free Update
-  **800,000+** Satisfied Customers



**QUESTION 1**

What happens if you select Web Server in the dialog box? Exhibit:

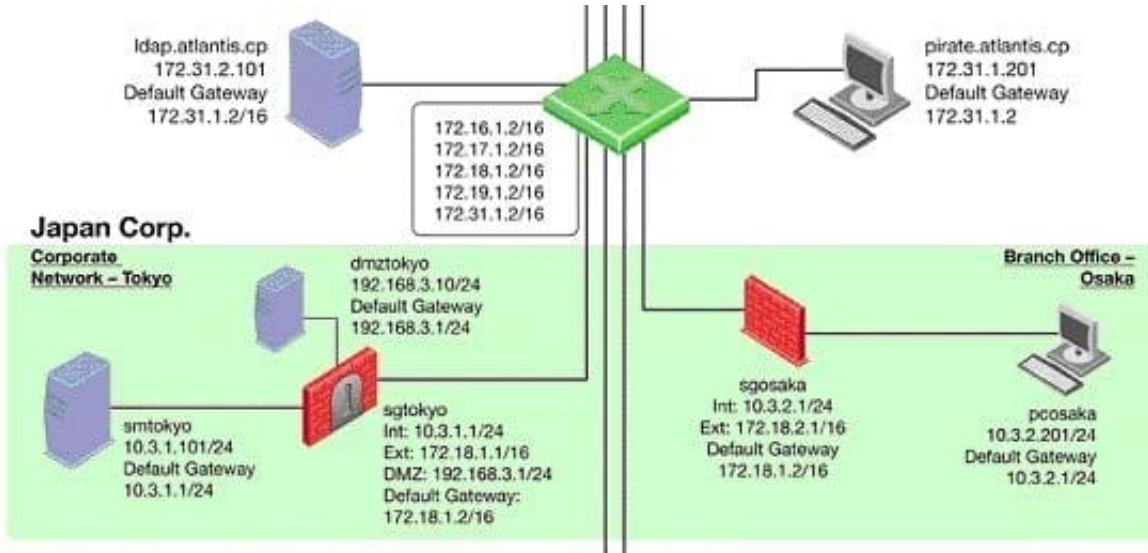


- A. An implied rule will be added allowing HTTP requests to the host.
- B. Anti-virus settings will be applied to the host.
- C. Web Intelligence will be applied to the host.
- D. An implied rule will be added allowing HTTP request from and to the host.

Correct Answer: C

**QUESTION 2**

The Tokyo Security Management Server Administrator cannot connect from his workstation in Osaka.



Which of the following lists the BEST sequence of steps to troubleshoot this issue?

- A. Check for matching OS and product versions of the Security Management Server and the client. Then, ping the Gateways to verify connectivity. If successful, scan the log files for any denied management packets.
- B. Verify basic network connectivity to the local Gateway, service provider, remote Gateway, remote network and target machine. Then, test for firewall rules that deny management access to the target. If successful, verify that `pcosaka` is a valid client IP address.
- C. Check the allowed clients and users on the Security Management Server. If `pcosaka` and your user account are valid, check for network problems. If there are no network related issues, this is likely to be a problem with the server itself. Check for any patches and upgrades. If still unsuccessful, open a case with Technical Support.
- D. Call Tokyo to check if they can ping the Security Management Server locally. If so, login to `sgtokyo`, verify management connectivity and Rule Base. If this looks okay, ask your provider if they have some firewall rules that filters out your management traffic.

Correct Answer: B

**QUESTION 3**

Which SmartConsole component can Administrators use to track changes to the Rule Base?

- A. WebUI
- B. SmartView Tracker
- C. SmartView Monitor
- D. SmartReporter

Correct Answer: B

---

#### QUESTION 4

The Identity Agent is a lightweight endpoint agent that authenticates securely with Single Sign-On (SSO). What is not a recommended usage of this method?

- A. When accuracy in detecting identity is crucial
- B. Leveraging identity for Data Center protection
- C. Protecting highly sensitive servers
- D. Identity based enforcement for non-AD users (non-Windows and guest users)

Correct Answer: D

---

#### QUESTION 5

Your manager requires you to setup a VPN to a new business partner site. The administrator from the partner site gives you his VPN settings and you notice that he setup AES 128 for IKE phase 1 and AES 256 for IKE phase 2. Why is this a problematic setup?

- A. The two algorithms do not have the same key length and so don't work together. You will get the error .... No proposal chosen....
- B. All is fine as the longest key length has been chosen for encrypting the data and a shorter key length for higher performance for setting up the tunnel.
- C. Only 128 bit keys are used for phase 1 keys which are protecting phase 2, so the longer key length in phase 2 only costs performance and does not add security due to a shorter key in phase 1.
- D. All is fine and can be used as is.

Correct Answer: C

[Latest 156-215.77 Dumps](#)

[156-215.77 Exam Questions](#)

[156-215.77 Braindumps](#)