

1Y0-A20^{Q&As}

Citrix XenApp 6.5 Administration

Pass Citrix 1Y0-A20 Exam with 100% Guarantee

Free Download Real Questions & Answers **PDF** and **VCE** file from:

<https://www.pass2lead.com/1y0-a20.html>

100% Passing Guarantee
100% Money Back Assurance

Following Questions and Answers are all new published by Citrix
Official Exam Center

-  **Instant Download** After Purchase
-  **100% Money Back** Guarantee
-  **365 Days** Free Update
-  **800,000+** Satisfied Customers



QUESTION 1

In building out a new XenApp environment, an administrator places the Secure Gateway and Web Interface in the DMZ.

What must the administrator do to secure the traffic to the XML Broker?

- A. Change the XML traffic port to a non-standard assignment.
- B. Use the SSL Relay tool to encrypt traffic to the XML Broker in the farm.
- C. Place the XML Broker in the DMZ and encrypt the traffic between them.
- D. Use encrypted ICA to communicate between the XML Broker and the Web Interface.

Correct Answer: B

QUESTION 2

Scenario: An administrator has published Microsoft Word on two identical servers in a server farm. There are 75 users in the environment, and each server must be allowed to accept all 75 user sessions for failover purposes. All users start work at 09:00 in the morning. The administrator wants to prevent server failure due to excessive connection attempts during this logon time.

Which option will meet the needs of this scenario?

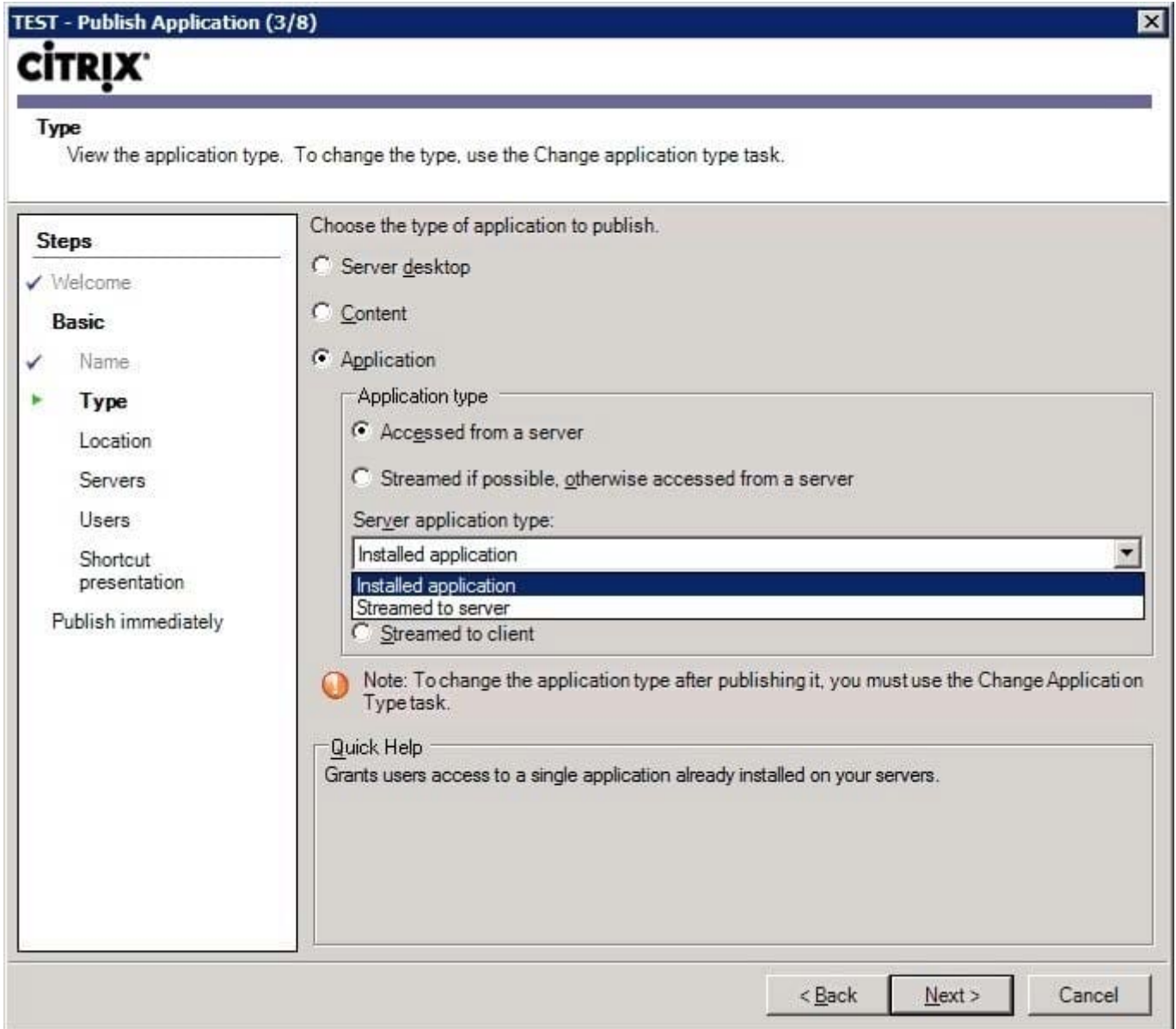
- A. Load balancing policy
- B. Default load evaluator
- C. Server session policy
- D. Advanced load evaluator

Correct Answer: B

QUESTION 3

Scenario: A XenApp administrator is tasked with delivering a new application to the XenApp farm. During testing, the administrator finds that the application is incompatible with existing applications installed on the XenApp servers. He CANNOT install the application on the servers.

The administrator is in the process of publishing this application. Click the "Exhibit" button to view a screenshot of the Publish Application window.



Which streaming option should the administrator use to publish the application so that iPhone mobile device users can access the application?

- A. Streamed to client
- B. Accessed from a server- Streamed to server
- C. Accessed from a server- Installed application
- D. Streamed if possible, otherwise accessed from a server

Correct Answer: B

QUESTION 4

Scenario: A server farm consists of dual- and single-processor servers. The administrator wants to ensure that the dual-

processor servers receive more sessions than the single-processor servers. In addition, the administrator wants to ensure that no server receives more than 100 user sessions.

In order to meet these requirements, the administrator must assign the _____. (Choose the correct option to complete the sentence.)

- A. custom load evaluator rule to all servers
- B. advanced load evaluator rule to all servers
- C. custom load evaluator rule to all dual-processor servers
- D. advanced load evaluator rule to all dual-processor servers

Correct Answer: A

QUESTION 5

An administrator wishes to disable the prompt given to users when Flash content is displayed in their XenApp session without impacting the performance of Flash content.

See the attached exhibit to view the prompt window.



What should the administrator do to achieve this?

- A. Un-install the Flash player on the client PC.
- B. Un-install the Flash player on the XenApp server.
- C. Create a XenApp policy that enables Flash redirection.

D. Create a client-side group policy to always use Flash redirection.

Correct Answer: D

[Latest 1Y0-A20 Dumps](#)

[1Y0-A20 Study Guide](#)

[1Y0-A20 Exam Questions](#)