

1Z0-151^{Q&As}

Oracle Fusion Middleware 11g: Build Applications with Oracle Forms

Pass Oracle 1Z0-151 Exam with 100% Guarantee

Free Download Real Questions & Answers **PDF** and **VCE** file from:

<https://www.pass2lead.com/1z0-151.html>

100% Passing Guarantee
100% Money Back Assurance

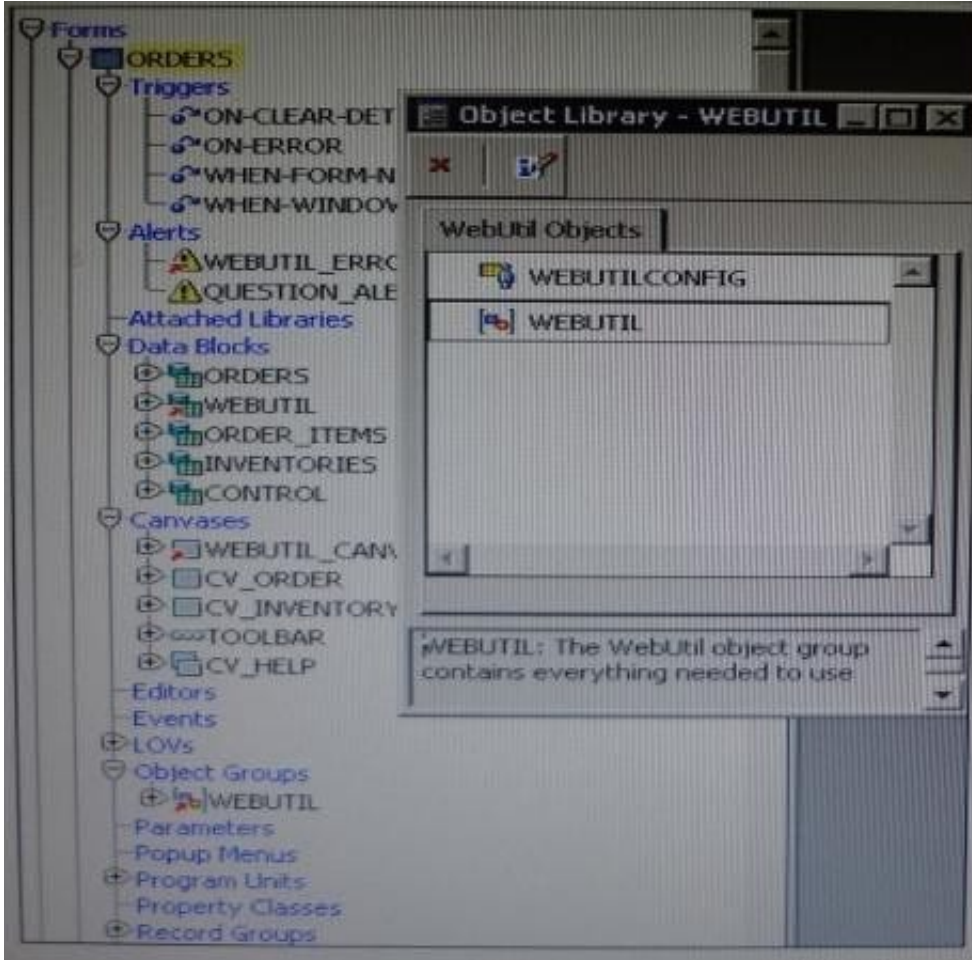
Following Questions and Answers are all new published by Oracle
Official Exam Center

- ⚙️ **Instant Download** After Purchase
- ⚙️ **100% Money Back** Guarantee
- ⚙️ **365 Days** Free Update
- ⚙️ **800,000+** Satisfied Customers



QUESTION 1

View the Exhibit.



You have begun the process of integrating WebUtil into the Ordes form. What two additional steps must be completed yet?

- A. Write a Pre Form trigger to register WebUtil JavaBeans.
- B. Attach the WebUtil PL/SQL library to the form.
- C. Subclass the webUtilConfig parameter from the WebUtil object library into the form.
- D. Define WebUtil events that the form listens and responds to.
- E. Move the WebUtil data block to the last position under the Data Blocks node in the Object Navigator.
- F. Move the WebUtil data block to the first position under the Data Blocks node in the Object Navigator.

Correct Answer: CE

Integrating WebUtil into a Form

Step 1: Attaching the WebUtil Library (This has already been done in this scenario not B) To use the

functions of WebUtil in a Forms application, you must first attach the webutil.pll library to any module that will use the WebUtil PL/SQL API. Select the Attached Libraries node in the Orders form and click Create.

This invokes the Attach Library dialog box, in which you can browse to the location of webutil.pll

Step 2: Subclassing WebUtil Forms Objects (C)

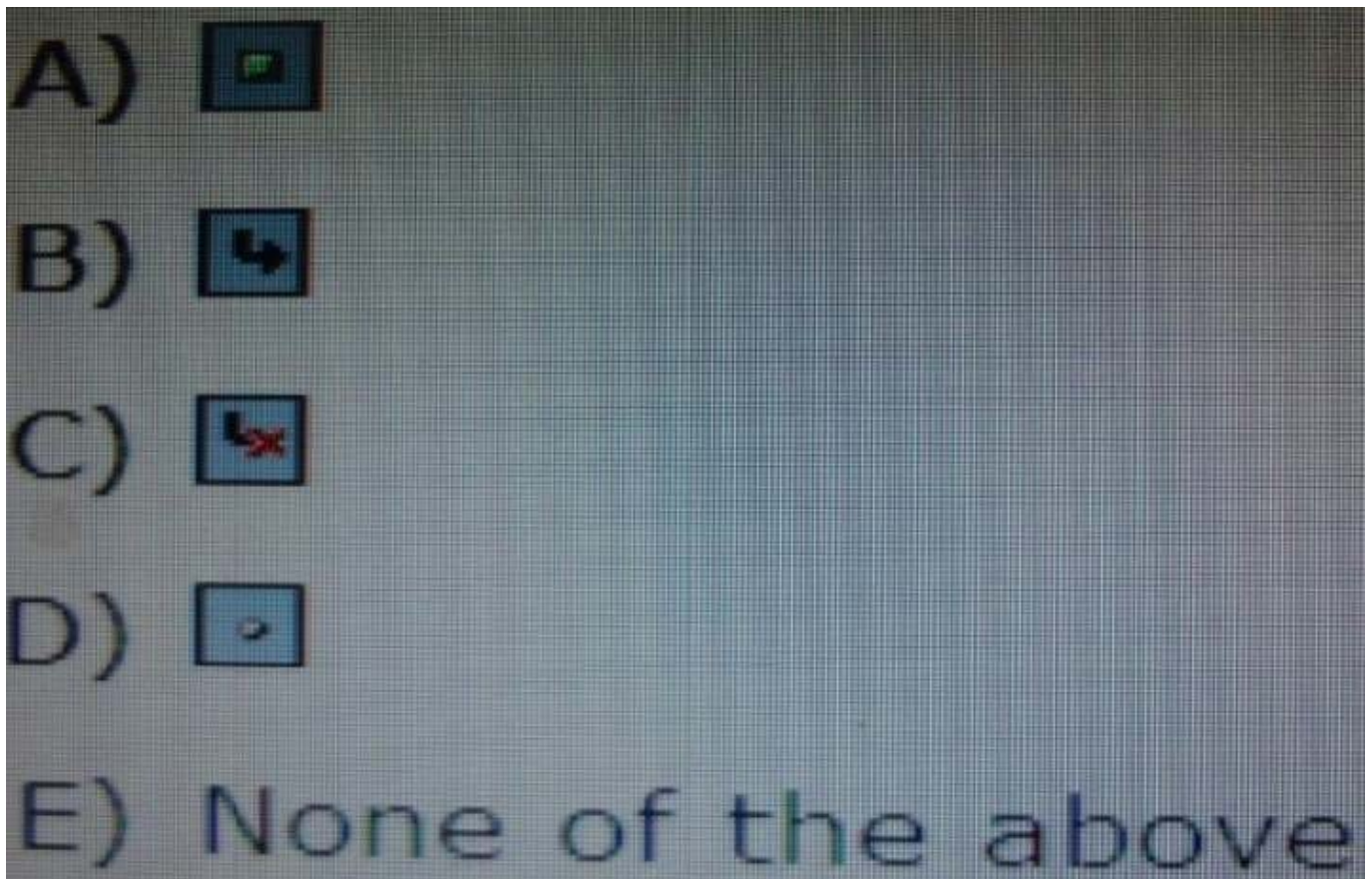
Part of the WebUtil utility is a set of Forms objects contained in webutil.olb . This object library contains an object group called WebUtil, which you can subclass into your form.

E: A data block named WEBUTIL; ensure that this is the last block in the Navigator.

Reference: Oracle Fusion Middleware 11g, Build Applications with Oracle Forms, Integrating WebUtil into a Form

QUESTION 2

Which symbol when used in an object's Property Palette, indicates an inherited property that has been changed?



A. Option A

B. Option B

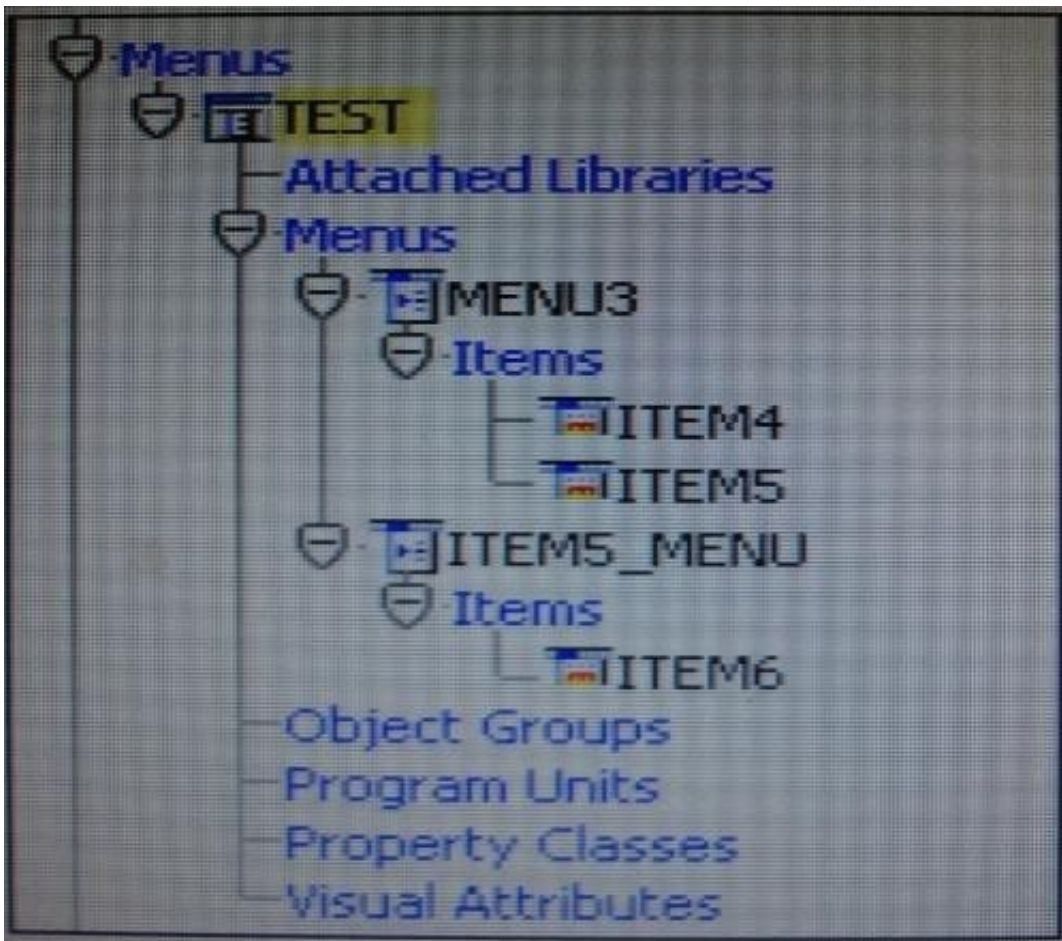
C. Option C

D. Option D

Correct Answer: C

QUESTION 3

View the Exhibit.



You are creating a menu for use with several forms. You create the structure of the menu in the Menu Editor.

As shown in the Object Navigator in the Exhibit, which objects are menu items?

- A. MENU3 only
- B. ITEM6 only
- C. MENU3, ITEM4, ITEM5, ITEM5_MENU, and ITEMG
- D. ITEM4, ITEM5, and ITEM6 only
- E. ITEM4 and ITEM5 only

F. ITEM 4 and ITEM6 only

G. ITEM5 and ITEM only

H. MENU3 and ITEM5_MENU only

Correct Answer: D

MENU3 and ITEM5_MENU are menus.

QUESTION 4

An LOV must be displayed several times in your form; therefore, good performance when displaying LOV is essential. In a When-New-Form-instance trigger, you want to save the ID of the LOV in a global variable so that you can use it in any code to display the LOV.

Which built-in would you use to get the ID of the LOV?

A. SHOW_LOV

B. FIND_LOV

C. GET_ITEM_PROPERTY

D. GET_LOV_PROPERTY

E. GET_APPLICATION_PROPERTY

Correct Answer: B

Referencing Objects by Internal ID Finding the object ID:

```
lov_id := FIND_LOV(\\my_lov\\')
```

QUESTION 5

You do not want users to execute queries while in the Order_Items block, so you write the following key-Exeqry trigger for the Order_Items block:

```
GO_BLOCK(\\orders\\'); EXECUTE_QUERY;
```

This works fine except that in the Order_Items block, when you click Enter Query first, and then click Execute Query, you get the error message "FRM-41009: Function key not allowed." What can you do correct this?

A. Set the Fire in Enter-Query Mode property of the Key-Exeqry trigger to Yes.

B. Add the following as the first of the key-Exeqry trigger to Yes. SYSTEM.mode := \\NORMAL\\';

C. Delete the Key-Exeqry trigger and define the following Key-Entqry trigger for the Order_Items block: GO_BLOCK(\\orders\\'); ENTER_QUERY;

D. Delete the Key-Exeqry trigger and define the following Key-Entqry trigger for the Order_Items block: ENTER_QUERY; GO_BLOCK(\\orders\\');

E. Change the key-Exqry trigger to: IF : SYSTEM.MODE := \\ENTER-QUERY\\ THEN GO_BLOCK (\\orders\\); EXECUTE_QUERY; ELSE MESSAGE (\\you cannot execute a query for the Order_Items block\\): END IF; Define the following Key-Entqry trigger for the Order_Items block: GO_BLOCK (\\orders\\); ENTER_QUERY

F. Change the Key-Exeqry trigger to: IF :SYSTEM.MODE != \\ENTER-QUERY\\ THEN GO_BLOCK(\\orders\\); EXECUTE_QUERY; ELSE MESSAGE (\\You cannot execute a query in this block\\); ENTER_QUERY; GO_BLOCK (\\orders\\);

G. You cannot change this behavior, but you should use the On-Message trigger to display a more meaningful message.

Correct Answer: C

Note: You can use system variables and built-ins to obtain information about queries.

Using SYSTEM.mode

Use the SYSTEM.mode system variable to obtain the form mode. The three values are NORMAL , ENTER_QUERY , and QUERY.

NORMAL Indicates that the form is currently in normal processing mode. ENTER-QUERY Indicates that the form is currently in Enter Query mode. QUERY Indicates that the form is currently in fetch processing mode, meaning that a query is currently being processed.

Note 1: ENTER_QUERY procedure

Clears the current block and creates a sample record. Operators can then specify query conditions before executing the query with a menu or button command.If there are changes to commit, the Forms Builder prompts the operator to commit them before continuing ENTER- QUERY processing

Note 2: EXECUTE_QUERY procedure

Clears the current block, opens a query, and fetches anumber of selected records. If there are changes tocommit, Forms Builder prompts the operator to committhem before continuing EXECUTE- QUERYprocessin

[Latest 1Z0-151 Dumps](#)

[1Z0-151 Practice Test](#)

[1Z0-151 Braindumps](#)