

1Z0-151^{Q&As}

Oracle Fusion Middleware 11g: Build Applications with Oracle Forms

Pass Oracle 1Z0-151 Exam with 100% Guarantee

Free Download Real Questions & Answers **PDF** and **VCE** file from:

<https://www.pass2lead.com/1z0-151.html>

100% Passing Guarantee
100% Money Back Assurance

Following Questions and Answers are all new published by Oracle
Official Exam Center

- ⚙️ **Instant Download** After Purchase
- ⚙️ **100% Money Back** Guarantee
- ⚙️ **365 Days** Free Update
- ⚙️ **800,000+** Satisfied Customers



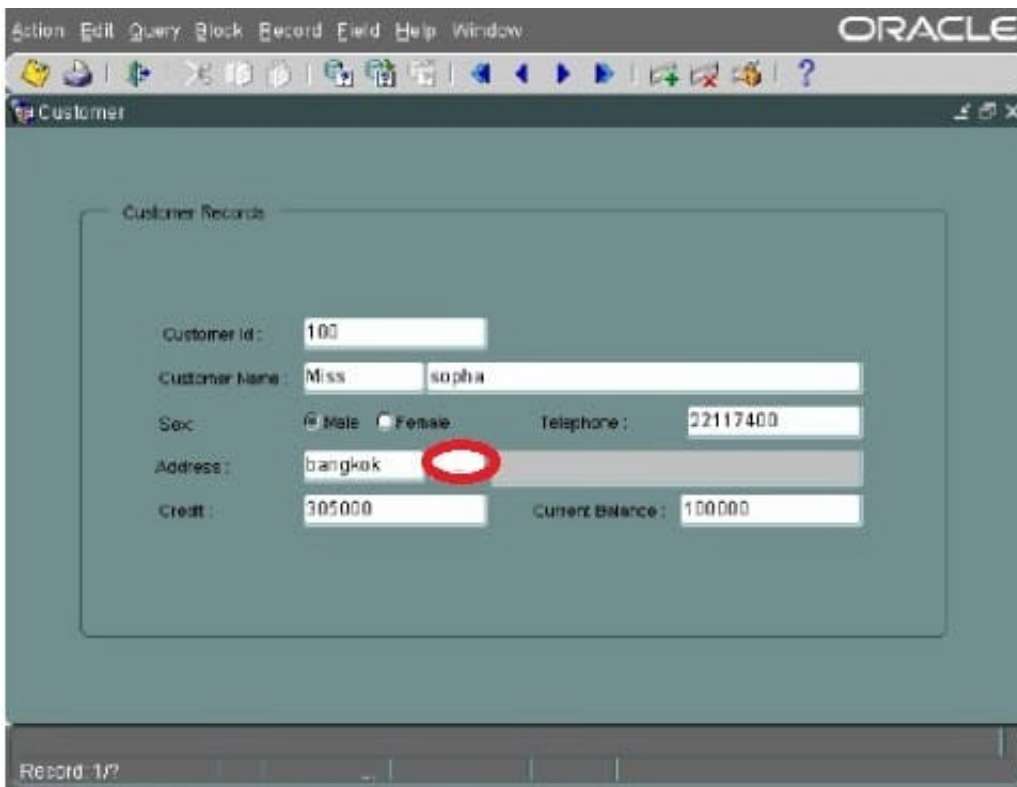
QUESTION 1

Which statement is always true about a visual indicator that a text item has a list of values associated with it?

- A. An iconic list button appears next to the text item.
- B. A list of values lamp appears as a tool tip when the cursor is placed over the text item.
- C. A list of values lamp appears next to the text item.
- D. A list of values lamp appears on the status line when the cursor enters the text item.
- E. A button with an ellipsis appears in the text item when the cursor enters the text item.

Correct Answer: A

Example, Address has a list of values:



QUESTION 2

What happens when you click Run Form Debug in Forms Builder?

- A. The form runs on your local machine by using a debug executable client.
- B. The form runs in a three-tier environment by using the application server URL that you specify in runtime preferences.

C. The form runs in a three tier environment by using the [debug] configuration in the FORMSWEB.CFG file.

D. The form runs in a simulated three-tier environment by using an applet viewer that is included with the product to enable debugging.

Correct Answer: B

Directly from the class materials from Oracle: As in the case when you run a form from Forms Builder with the Run Form button, the Run Form Debug button runs the form in a three-tier environment. It takes its settings from the Preferences window that you access by selecting Edit > Preferences from the main menu and clicking the Runtime tab.

QUESTION 3

You must be careful when coding a When-Button-Pressed trigger, because it does not accept restricted built-ins.

A. True

B. False

Correct Answer: B

The When-Button-Pressed trigger:

*

Fires when the operator clicks a button

*

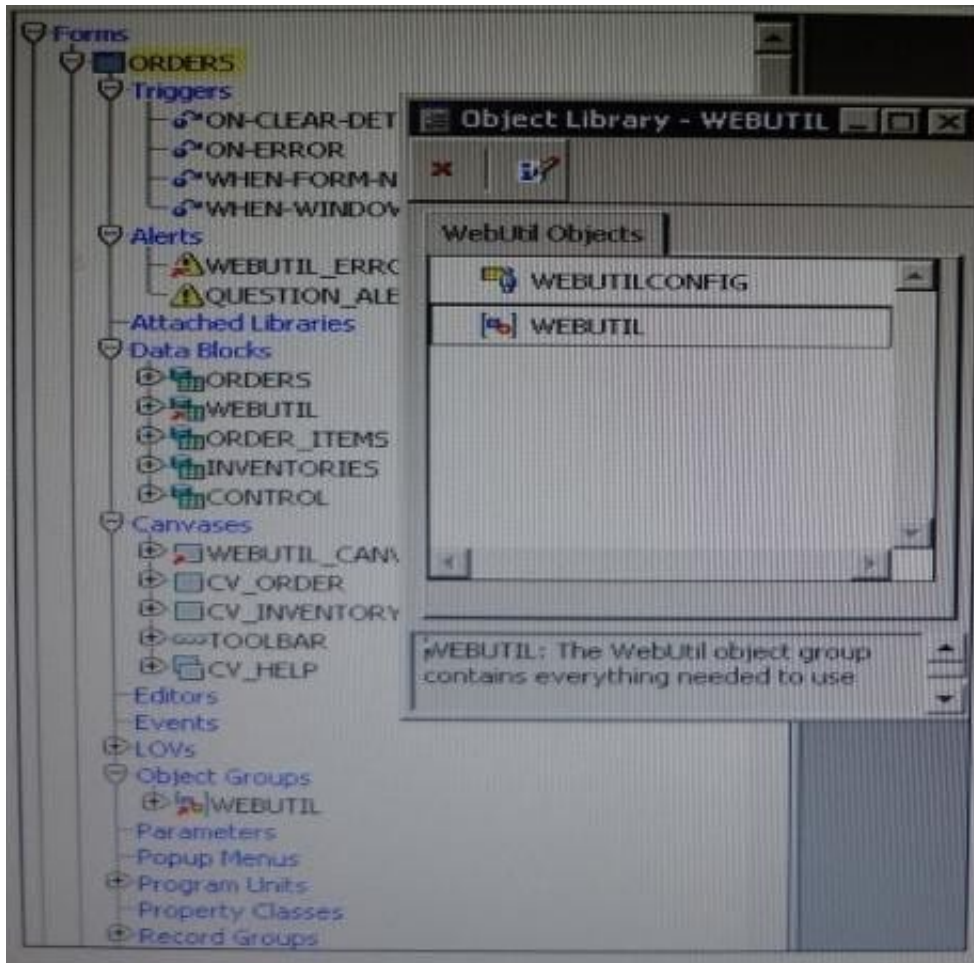
Accepts restricted and unrestricted built-ins

*

Is used to provide convenient navigation, and to display LOVs and many other frequently used functions

QUESTION 4

View the Exhibit.



You have begun the process of integrating WebUtil into the Ordes form. What two additional steps must be completed yet?

- A. Write a Pre Form trigger to register WebUtil JavaBeans.
- B. Attach the WebUtil PL/SQL library to the form.
- C. Subclass the webUtilConfig parameter from the WebUtil object library into the form.
- D. Define WebUtil events that the form listens and responds to.
- E. Move the WebUtil data block to the last position under the Data Blocks node in the Object Navigator.
- F. Move the WebUtil data block to the first position under the Data Blocks node in the Object Navigator.

Correct Answer: CE

Integrating WebUtil into a Form

Step 1: Attaching the WebUtil Library (This has already been done in this scenario not B) To use the functions of WebUtil in a Forms application, you must first attach the webutil.pll library to any module that will use the WebUtil PL/SQL API. Select the Attached Libraries node in the Orders form and click Create.

This invokes the Attach Library dialog box, in which you can browse to the location of webutil.pll

Step 2: Subclassing WebUtil Forms Objects (C)

Part of the WebUtil utility is a set of Forms objects contained in webutil.olb . This object library contains an object group called WebUtil, which you can subclass into your form.

E: A data block named WEBUTIL; ensure that this is the last block in the Navigator.

Reference: Oracle Fusion Middleware 11g, Build Applications with Oracle Forms, Integrating WebUtil into a Form

QUESTION 5

You wish to use a javaBean in a form. This javaBean has no visible component.

You use the Layout Editor to create a bean area item that implements this JavaBean. You want to be able to see the bean area item in the Layout Editor so that you can easily interact with it at design time.

What can you do to ensure that the bean area item does not appear on the form at run time?

- A. Set its Visible property to No.
- B. Set its Height and Width properties to 1.
- C. Set its Implementation class programmatically at run time.
- D. You do not have to do anything; if Implementation Class does not display a visible component, the bean area does not show at run time.
- E. You cannot avoid displaying the Bean area at run time.

Correct Answer: B

*

To hide the Bean on the canvas, select the Bean in the Layout editor. Set the Width and Height properties to 1, and set the background and foreground color to the color of the canvas.

*

In the Layout Editor, add a Bean Area to your Canvas. Since it will be a non-visual Bean, you may want to make it small and put it out of the way of the other Items. However, it must be present on the same Canvas as the visual Items to function.

[1Z0-151 PDF Dumps](#)

[1Z0-151 Study Guide](#)

[1Z0-151 Exam Questions](#)