

# 1Z0-567<sup>Q&As</sup>

Primavera P6 Enterprise Project Portfolio Management 8 Essentials

## Pass Oracle 1Z0-567 Exam with 100% Guarantee

Free Download Real Questions & Answers **PDF** and **VCE** file from:

<https://www.pass2lead.com/1z0-567.html>

100% Passing Guarantee  
100% Money Back Assurance

Following Questions and Answers are all new published by Oracle  
Official Exam Center

- ⚙️ **Instant Download** After Purchase
- ⚙️ **100% Money Back** Guarantee
- ⚙️ **365 Days** Free Update
- ⚙️ **800,000+** Satisfied Customers



### QUESTION 1

You are an executive that wants to review portfolio data for a high-risk/high-priority group of projects. You go to Portfolios in Primavera P6 Web. However, the data shown is not the correct portfolio. What should you do to correct this problem?

- A. Manage the desired portfolio.
- B. Open the desired portfolio.
- C. Filter the portfolio in a dashboard.
- D. Create a user portfolio view.

Correct Answer: C

Explanation:

---

### QUESTION 2

Identify the true statement regarding user-interface views.

- A. Deleting a user-interface view that has assigned users could cause user issues.
- B. Each user may be assigned to multiple user-interface views.
- C. User-interface views overwrite project and global security profiles.
- D. User-interface views are created and managed by individual users.

Correct Answer: B

Explanation:

A user interface view is a customized view of the Dashboards, Portfolios, Projects, and Resources sections of P6 Web Access typically associated with a role.

---

### QUESTION 3

What is the significance of setting "Summarize project based on high-level resource planning"?

- A. Summarized project data will reflect top-down plans.
- B. Summarized project data will reflect bottoms-up plans.
- C. Summarized project data will reflect actuals pushed from another application.
- D. Summarized project data will be monetized.

Correct Answer: A

Explanation:

Typically, use the High Level Resource Planning option for future projects that are currently planning only high-level resource allocation requirements, or for

projects that are underway, but for which you do not want to assign resources at a detailed activity-level.

Note: `Summarize Project Based on` determines whether the Summarizer calculates and displays rolled-up data based on resource assignments at the activity or

project level. Note 2: You can summarize project data to a specific WBS level when calculating and maintaining summary data.

<b>Summarized Data</b> <input type="checkbox"/> Contains Summarized Data Only Last Summarized On Nov-12-04 15:29 Summarize to WBS Level 2 Summarize project based on <input type="radio"/> High level resource planning <input checked="" type="radio"/> Detail activity resource assignments	<b>Project Settings</b> Character for separating code fields for the WBS tree Fiscal year begins on the 1st day of January Baseline for earned value calculations <input checked="" type="radio"/> Project baseline <input type="radio"/> User's primary baseline <b>Define Critical Activities</b> <input checked="" type="radio"/> Total Float less than or equal to 0.00d <input type="radio"/> Longest Path
---	---

**QUESTION 4**

Identify the true statement regarding the EPS page in P6 R8.

- A. You can copy a project on the EPS page and paste it into another EPS node.
- B. You cannot copy projects on the EPS page - this must still be done in the Client.
- C. Any user can now copy projects on the EPS page regardless of the user's Security profile.
- D. Only application administrators have the privilege to copy/paste projects.

Correct Answer: A

Explanation:

Note:

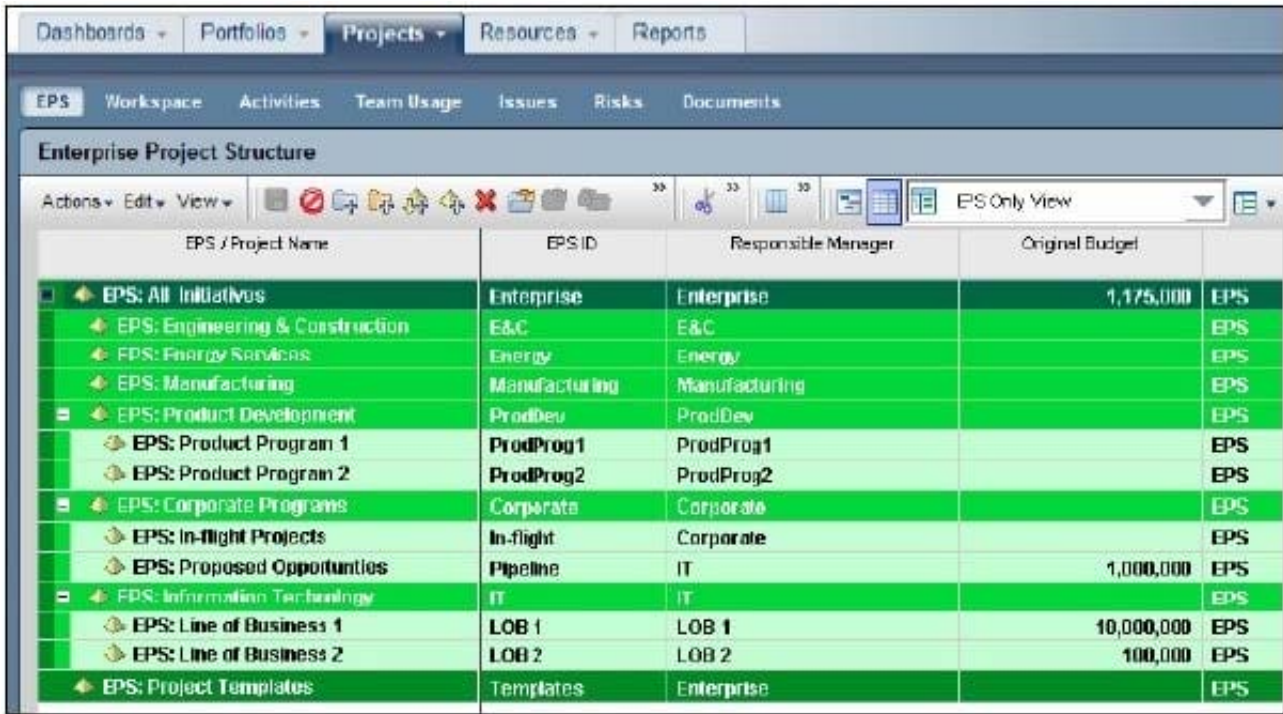
\*

Enterprise Project Structure (EPS)

The EPS is the outsider's view of your company, showing your lines of business. The EPS is laid out in a tree structure.

\*

Simply put, "enterprise" means information that is shared across all projects.



The screenshot shows the 'Enterprise Project Structure' table in Oracle Primavera EPPM. The table has columns for 'EPS / Project Name', 'EPS ID', 'Responsible Manager', 'Original Budget', and 'EPS'. The rows list various project categories and their associated IDs, managers, and budgets.

EPS / Project Name	EPS ID	Responsible Manager	Original Budget	EPS
EPS: All Initiatives	Enterprise	Enterprise	1,175,000	EPS
EPS: Engineering & Construction	E&C	E&C		EPS
EPS: Energy Services	Energy	Energy		EPS
EPS: Manufacturing	Manufacturing	Manufacturing		EPS
EPS: Product Development	ProdDev	ProdDev		EPS
EPS: Product Program 1	ProdProg1	ProdProg1		EPS
EPS: Product Program 2	ProdProg2	ProdProg2		EPS
EPS: Corporate Programs	Corporate	Corporate		EPS
EPS: In-flight Projects	In-flight	Corporate		EPS
EPS: Proposed Opportunities	Pipeline	IT	1,000,000	EPS
EPS: Information Technology	IT	IT		EPS
EPS: Line of Business 1	LOB 1	LOB 1	10,000,000	EPS
EPS: Line of Business 2	LOB 2	LOB 2	100,000	EPS
EPS: Project Templates	Templates	Enterprise		EPS

**QUESTION 5**

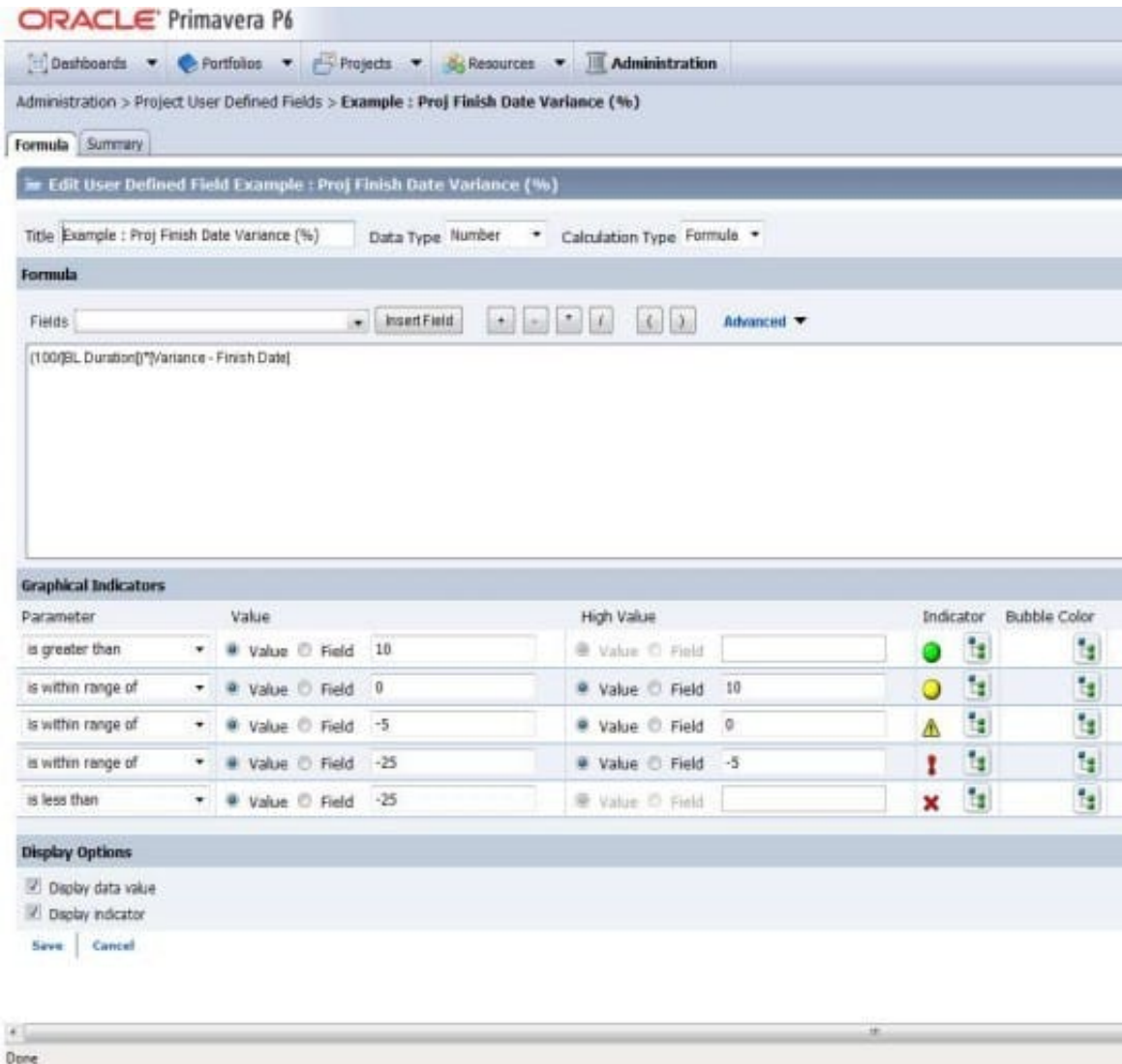
Calculated project user-defined fields \_\_\_\_\_ and \_\_\_\_\_.

- A. are created by system administrators
- B. are managed by Configuration Management
- C. are associated with formulas
- D. are viewable in either the web interface or client
- E. are defined in the web interface and only viewable in the web interface

Correct Answer: CE

Explanation:

C: The Oracle Primavera EPPM Web Access product contains a functionality where by users can create their own calculated values and dashboard indicators for monitoring project KPI's. This is achieved by creating Project Calculated User Defined Fields. The formulas which can be populated in these fields is similar to a formula used in some spreadsheet applications e.g. Microsoft Excel. Providing a simple and effective platform for creating all manner of organisation bespoke project indicators.



Note: User-defined fields enable you to customize fields and values and add them to the project database.

[Latest 1Z0-567 Dumps](#)

[1Z0-567 Study Guide](#)

[1Z0-567 Braindumps](#)