

1Z0-591^{Q&As}

Oracle Business Intelligence Foundation Suite 11g Essentials

Pass Oracle 1Z0-591 Exam with 100% Guarantee

Free Download Real Questions & Answers **PDF** and **VCE** file from:

<https://www.pass2lead.com/1z0-591.html>

100% Passing Guarantee
100% Money Back Assurance

Following Questions and Answers are all new published by Oracle
Official Exam Center

-  **Instant Download** After Purchase
-  **100% Money Back** Guarantee
-  **365 Days** Free Update
-  **800,000+** Satisfied Customers



QUESTION 1

What are the two leading design solutions recommended by Oracle that you would use for performance?

- A. Design requests that use Complex Queries
- B. Avoid returning big data sets within the Dashboard
- C. Use Cache
- D. Avoid using Guided Navigation unless the data set is large

Correct Answer: BC

Explanation: C: OBIEE Caching and Cache Seeding

Cache is a component that improves performance by transparently storing data such that future requests for the same criteria can be served much faster. Like other application cache is not virtual memory in OBIEE. In OBIEE cache will be stored as files on the Hard Disk of the OBIEE Server in the form of files. By Default caching is enabled in the OBIEE server configuration.

For time-consuming Dashboard Pages, we can use the concept of cache seeding in OBIEE, this can be configured as a scheduled job that will ensure that the data is cached and readily available as and when the user runs the dashboard.

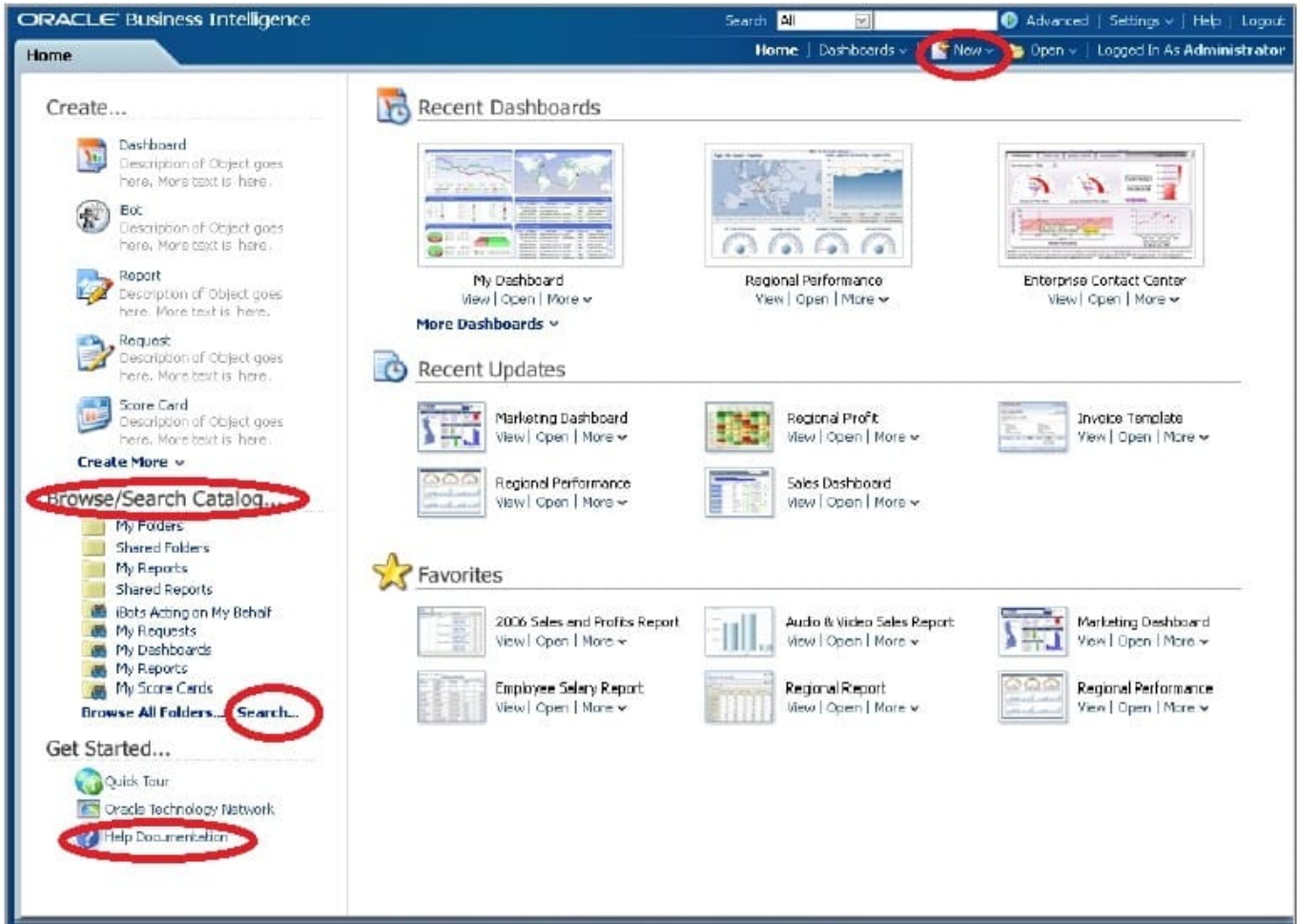
QUESTION 2

A user's BI Home page provides one-click access to which three options?

- A. Create new content
- B. Oracle BI online documentation
- C. Catalog search functionality
- D. Dashboard layout editor
- E. Business model metadata

Correct Answer: ABC

Explanation: See BI Home Page screenshot below: Note: The BI Home page contains the BI content catalog. Fusion Apps will use OBIEE web catalog to store all shipped reporting and analytics content. From the BI home page users can browse and view the entire BI content. The BI catalog folder structure will match the Fusion Apps main menu structure. Folder structure would be content driven not technology driven which would enable ease of navigation for fusion Apps users.



Following content will be available under the BI catalog structure: BI Publisher Reports (regardless of data source) OTBI reports and dashboards OBIA dashboards and scorecards Financial Reporting

Also, users can do some additional actions from the BI Home page like: Access personal and shared reports, View/ edit BI publisher report schedules, Launch BI tools for advanced actions and create new reports with report wizard.

New reports created can be saved in BI catalog and added as embedded content within Fusion applications screens or links added to reporting pane. This enables users to extend the prebuilt embedded analytics within Fusion Applications.

QUESTION 3

Selecting the Manage Map Data link allows one to do which three of the following?

- A. Associate map layers to columns defined in the OBIEE metadata
- B. Create a new map layer
- C. Set the zoom level of an imported map
- D. Import images for use on maps

Correct Answer: ACD

Explanation: The Oracle BI Presentation Services Administration page provides the Manage Map Data link. This link displays the Manage Map Data page, where you can manage the logical and display versions of the data from various physical data sources. This defines the layers that content designers use when creating map views. The data that is available for managing maps and data is stored in Oracle Database as part of MapViewer.

Using this page, you provide:

*

(A) Logical names to prevent any existing BI column mappings and map analyses from breaking because of changes to the physical data or to the data source.

*

Display names so that the geographic data is meaningful to end users.

Note: Administering Maps Using Administration Pages For (C) Layers, see 3-7 below.

For (D) Import images, see 11-12 below.

To administer maps using Administration pages:

Click OK when you have finished selecting layers that are appropriate for the subject area with which you are working.

Click OK when you have finished editing the layer. You use this tab to associate layers with BI data. If you use the City column in multiple subject areas, then you must associate it with a layer for each subject area. The connection that you

select for the main map can be different from the connection for the layers or images.

Click OK when you have finished selecting main maps. Click OK when you have finished editing the map. Click OK when you have finished selecting images.

Reference: Oracle Fusion Middleware System Administrator's Guide for Oracle Business Intelligence Enterprise Edition, Configuring Mapping and Spatial Information

QUESTION 4

The three metadata layers are an important concept of the BI Server. Which statement is incorrect?

- A. The physical layer defines the objects and relationships that the Oracle BI Server needs to write native queries against each physical data source.
- B. Separating the logical of the application from the physical model provides the ability to federate multiple physical sources to the same logical object.
- C. The model and mapping layer define the business or logical model of the data. This layer determines the analytic behavior seen by users.
- D. The presentation layer defines the relationship that is needed to create the DML.

Correct Answer: D

Explanation: The relationship is defined at the model and mapping layer.

Note:

At the highest level, an OBIEE Metadata Repository includes three layers of information:

1.

First, a Physical layer is defined. The metadata layer identifies the source data.

2. Second, a Business Model and Mapping layer is defined. This metadata layer organizes the physical layer into logical categories and records the appropriate metadata for access to the source data. 3. Finally, the Presentation layer is defined. This metadata layer exposes the business model entities for end-user access.

QUESTION 5

Where is Cache in OBIEE located?

- A. In relational database
- B. It is local disk-based.
- C. In dynamic aggregate
- D. In memory cache

Correct Answer: B

Explanation: In OBIEE cache will be stored as files on the Hard Disk of the OBIEE Server in the form of files.

[1Z0-591 PDF Dumps](#)

[1Z0-591 Study Guide](#)

[1Z0-591 Exam Questions](#)