

1Z0-591^{Q&As}

Oracle Business Intelligence Foundation Suite 11g Essentials

Pass Oracle 1Z0-591 Exam with 100% Guarantee

Free Download Real Questions & Answers **PDF** and **VCE** file from:

<https://www.pass2lead.com/1z0-591.html>

100% Passing Guarantee
100% Money Back Assurance

Following Questions and Answers are all new published by Oracle
Official Exam Center

- ⚙️ **Instant Download** After Purchase
- ⚙️ **100% Money Back** Guarantee
- ⚙️ **365 Days** Free Update
- ⚙️ **800,000+** Satisfied Customers



QUESTION 1

DSNs are set up for access to which data sources?

- A. ODBC Data Sources
- B. Oracle Data Sources
- C. IBM Data Sources
- D. Teradata Data Sources

Correct Answer: A

Explanation: The principal connection to an OBI Server inside the Oracle BI System is made through an Odbc Connection.

OBI Server can handle multiple repository but you can connect to only one at the same time by DSN Odbc Connection. Therefore, you must set up an ODBC connection for each repository.

QUESTION 2

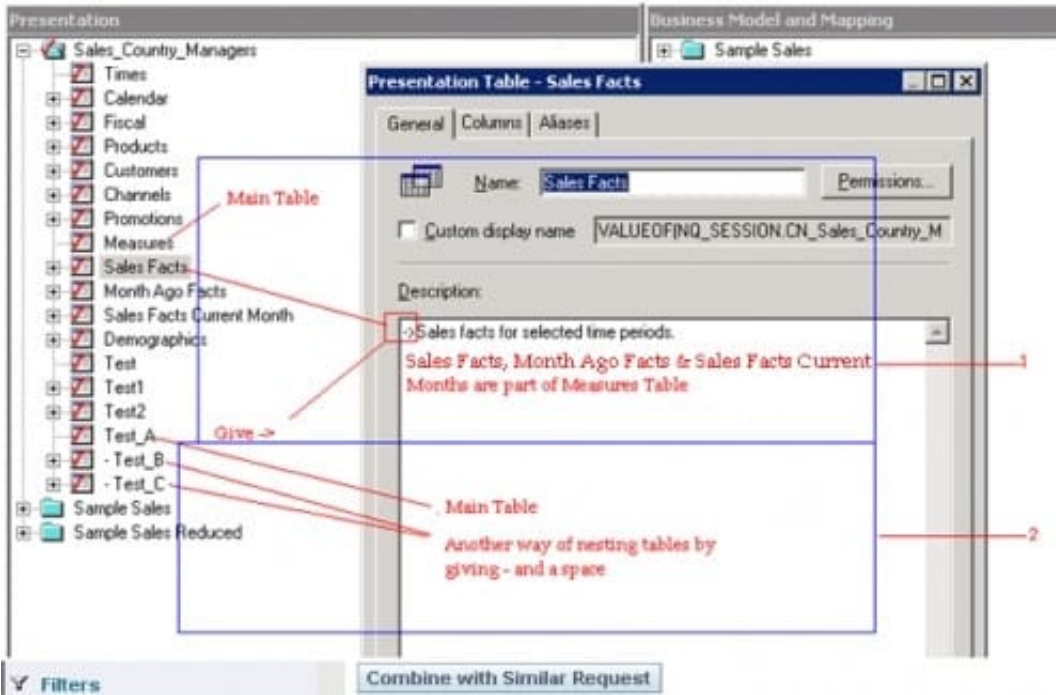
An organization would like to see a Time folder with subfolders for its Fiscal and Julian calendars. How would you accomplish this?

- A. By creating Presentation Folder called Time and then two subsequent folders called -> Fiscal Calendar and -> Julian Calendar
- B. By creating a Presentation Folder called ->Time called then two subsequent folders called Fiscal Calendar and Julian Calendar
- C. By creating a Presentation Folder called -Time and then two subsequent folders called + Fiscal Calendar and + Julian Calendar
- D. By creating a Presentation Folder called Time and then two subsequent folders called Fiscal Calendar and Julian Calendar

Correct Answer: A

Explanation: You can nest presentation folders in two ways.

- 1) You can enter a hyphen and a greater than sign in the description field of the table to achieve the result.
- 2) Or, prefix the name of the presentation folder to be nested with a hyphen and a space and place it after the folder in which it nests to achieve the same result as shown below.



Result



QUESTION 3

Select the scenario in which block storage must be used instead of aggregate storage.

- A. Incremental data loading
- B. Top - down planning
- C. Extremely sparse data sets
- D. Millions of members in the outline

Correct Answer: B

Explanation: BSO is preferred to ASO in the following scenarios:

*

Top-down planning and allocation (Sales Forecasting)

*

Cost Allocations across products and customers (Profitability Analysis)

*

Currency conversion, inter-company eliminations(Financial consolidations)

QUESTION 4

WLS Embedded LDAP Server is managed by the Admin Server Console and supports which three options?

- A. Creating and Maintaining Users
- B. Authentication and Authorization
- C. Basic Directory for storing user details
- D. Subject area and row-level security, connection pool passwords
- E. Application of Session Variables as Data Filters

Correct Answer: ACD

Explanation: WLS Embedded LDAP Server

*By default, OBIEE 11g users and groups are now held in the WLS LDAP Server (C)

-More robust directory for storing user details

-Recommended for >1000 users

*

WLS Admin Server Console now used for creating and maintaining users (A)

*

BI Server "outsources" all authentication, authorization to FMW11g (not B)

*

BI Administration tool now used for subject area and row-level security, connection pool passwords only (D) ?WLS LDAP Server can be "swapped out" for alternative directories (MS AD etc)

QUESTION 5

Which task can be performed after the Administrator link has been reached through logging into OBIEE?

- A. Associate map layers to columns
- B. Manage access to Subject Areas
- C. SSO enablement
- D. Start or Stop BI Managed Servers

Correct Answer: BCD

Explanation: B: BI Server Security Manager accessed through the BI Server Administration Tool.

*

Set permission to business model, tables, columns and subject areas

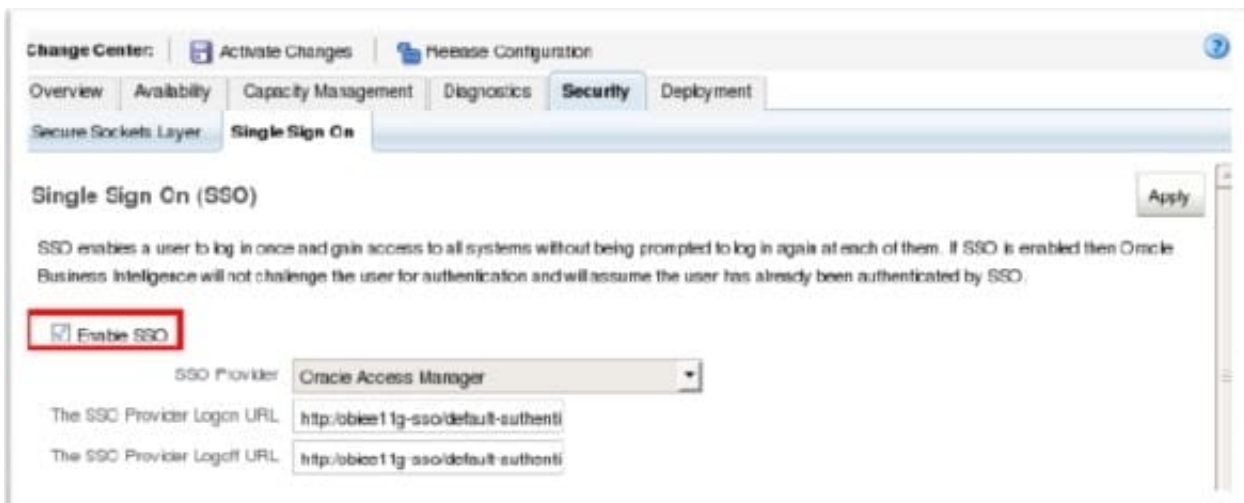
*

Specify filters to limit data accessible by users

*

Set authentication options

C: Enable the SSO through the FMW Control.



D: You have three methods to start the managed server:

*

with the console (recommended)

*

with FMW control

*

with the command line.

[1Z0-591 PDF Dumps](#)

[1Z0-591 Practice Test](#)

[1Z0-591 Exam Questions](#)