

1Z0-591^{Q&As}

Oracle Business Intelligence Foundation Suite 11g Essentials

Pass Oracle 1Z0-591 Exam with 100% Guarantee

Free Download Real Questions & Answers **PDF** and **VCE** file from:

<https://www.pass2lead.com/1z0-591.html>

100% Passing Guarantee
100% Money Back Assurance

Following Questions and Answers are all new published by Oracle
Official Exam Center

- ⚙️ **Instant Download** After Purchase
- ⚙️ **100% Money Back** Guarantee
- ⚙️ **365 Days** Free Update
- ⚙️ **800,000+** Satisfied Customers



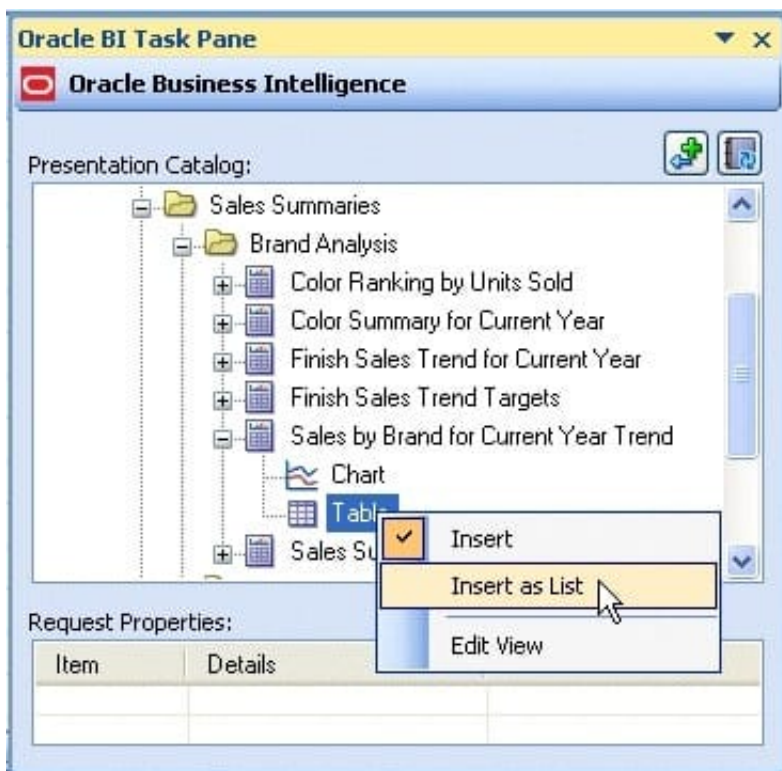
QUESTION 1

What are the two capabilities that users can apply to an Analysis when working within Plug- In for MS Office?

- A. Edit Analysis
- B. Refresh All
- C. Edit Prompts and Levels
- D. Publish

Correct Answer: BC

C: Right-click Table and select Insert as List from the shortcut menu. The Edit Prompts and Levels dialog box appears. Accept the default options and click Insert.



Explanation: B: Click Refresh All from the Oracle BI menu in PowerPoint to refresh all the refreshable objects in the presentation.

Reference: Using Oracle Business Intelligence Office Add-Ins with Oracle Business Intelligence Enterprise Edition (10.1.3.4) on Windows

QUESTION 2

What are the two types of Session Variables?

- A. System

B. Non System

C. Static

D. Dynamic

Correct Answer: AB

Explanation: There are two types of session variables:

System -- A session variable that the Oracle BI Server and Oracle BI Presentation Services use for specific purposes.

System session variables have reserved names that cannot be used for other kinds of variables (such as static or dynamic repository variables and non-system session variables).

Non-system -- A system variable that the administrator creates and names. For example, the administrator might create a SalesRegion non-system variable that initializes the name of a user's sales region.

The administrator creates non-system session variables using the Oracle BI Administration Tool.

Note: Session Variables

A session variable is a variable that is initialized at login time for each user. When a user begins a session, the Oracle BI Server creates a new instance of a session variable and initializes it. There are as many instances of a session variable as there are active sessions on the Oracle BI Server. Each instance of a session variable could be initialized to a different value.

QUESTION 3

Oracle BI Server at a company is connected to Data Warehouse that is refreshed on a daily basis, the majority of users at the company log in to Oracle BI every Monday to generate the previous week's sales report. The BI Administrator schedules cache purge and cache seeding to improve report response times. How is this accomplished?

A. Every day before Data Warehouse refresh

B. Every day after Data Warehouse refresh

C. Every Monday early morning

D. Every Monday late night

Correct Answer: D

Explanation: Purge and reseed once a week after the reports have run to improve report response time.

QUESTION 4

An integrated BI tools business case can be built around which three options?

A. Scalability

B. Fault tolerance

- C. Cost Savings
- D. Development efficiency

Correct Answer: ACD

QUESTION 5

Which analysis features could be applied to provide interactive controls for end users?

- A. Column Selector
- B. Action Links
- C. Conditional Formatting
- D. Narrative View
- E. Greenbar Styling

Correct Answer: B

Explanation: An action link is a link to an action that you have embedded in an analysis, dashboard page, scorecard objective, scorecard initiative, or KPI that, when clicked, runs an associated action.

[Latest 1Z0-591 Dumps](#)

[1Z0-591 PDF Dumps](#)

[1Z0-591 VCE Dumps](#)