

1Z0-591^{Q&As}

Oracle Business Intelligence Foundation Suite 11g Essentials

Pass Oracle 1Z0-591 Exam with 100% Guarantee

Free Download Real Questions & Answers **PDF** and **VCE** file from:

<https://www.pass2lead.com/1z0-591.html>

100% Passing Guarantee
100% Money Back Assurance

Following Questions and Answers are all new published by Oracle
Official Exam Center

- ⚙️ **Instant Download** After Purchase
- ⚙️ **100% Money Back** Guarantee
- ⚙️ **365 Days** Free Update
- ⚙️ **800,000+** Satisfied Customers



QUESTION 1

Where is Oracle Mapviewer installed?

- A. In the same domain as OBIEE on the web application server
- B. Never on the same domain as OBIEE on the web application server
- C. On the Database server
- D. On its own application server

Correct Answer: A

Explanation: With the advent of 11G, MapViewer is installed as part of Oracle BI Enterprise Edition and deployed in the same domain as Oracle BI EE on the Web application server. Before content designers can create map views, in the Manage map Data Administration page, the metadata must be configured:

*

layers (theme) and map (zoom level)

*

the mapping between Oracle BI EE data and spatial data

QUESTION 2

The WebLogic Repository Schema generated via RCU can be deployed to which three DBMS?

- A. Oracle RDBMS
- B. Microsoft SQL Server
- C. IBM DB2
- D. Teradata

Correct Answer: ABC

Explanation: BIEE 11g Install High level Steps : Software Required

1.

Database (Oracle, IBM DB2 or MS-SQL)

2.

Repository Creation Utility (RCU)

3.

OBIEE 11g (11.1.1.3 is latest OBIEE as of 30 April 2011)

4.

WebLogic 10.3.3 (Optional ?Only required for 64 bit machine or IBM AIX)

5.

JDK 1.6 64 bit (Optional ?Only required for 64 bit machine)

QUESTION 3

Which two steps are needed to set up Failover support for an OBIEE deployment?

- A. Use Installer to affect Horizontal scale out of an existing instance
- B. Employ WebLogic Enterprise Edition, licensed separately
- C. Use Installer to set up separate single instances, then apply Horizontal scale out clustering
- D. Apply OBIEE Clustering option
- E. Leverage spare hardware capacity of single machine by using Vertical scale out option

Correct Answer: AD

Explanation: Horizontal Scaleout of System Components

*

Used for adding additional managed servers (Java components) and system components to an existing cluster

*

Used for scalability and failover

*

Set up via the Universal Installer > Scale Out BI System option

QUESTION 4

Identify the two Object level security functions that are done on the repository by using the BI Admin tool.

- A. Assign users to a web catalog group
- B. Create a new repository group
- C. Create a new user in the repository
- D. Create a web catalog group
- E. Define permissions for Dashboard

Correct Answer: BC

Explanation: The Oracle Business Intelligence (BI) Administration Tool can be used to build, modify, enhance, and manage an Oracle BI repository.

C: To add a new user to a repository

1 Open a repository in the Administration Tool.

2 Display the security manager by selecting Manage > Security. 3 Select Action > New > User to open the User dialog box.

4 Type a name and password for the user.

5 If you want to log queries for this user in the query log, change the query logging level to 1 or 2.

6 Click OK.

This creates a new user with default rights granted to it.

Note: What is Oracle BI Admin Tool/Oracle Business Intelligence Administration Tool?

Oracle Business Intelligence Administration Tool is Used to manage OBIEE server Available only for Windows operating systems.

A Windows application that allows the BI Server administrator to create and edit repositories. Can edit repositories in either online or offline mode. Having a session manager and a cache manager in online mode.

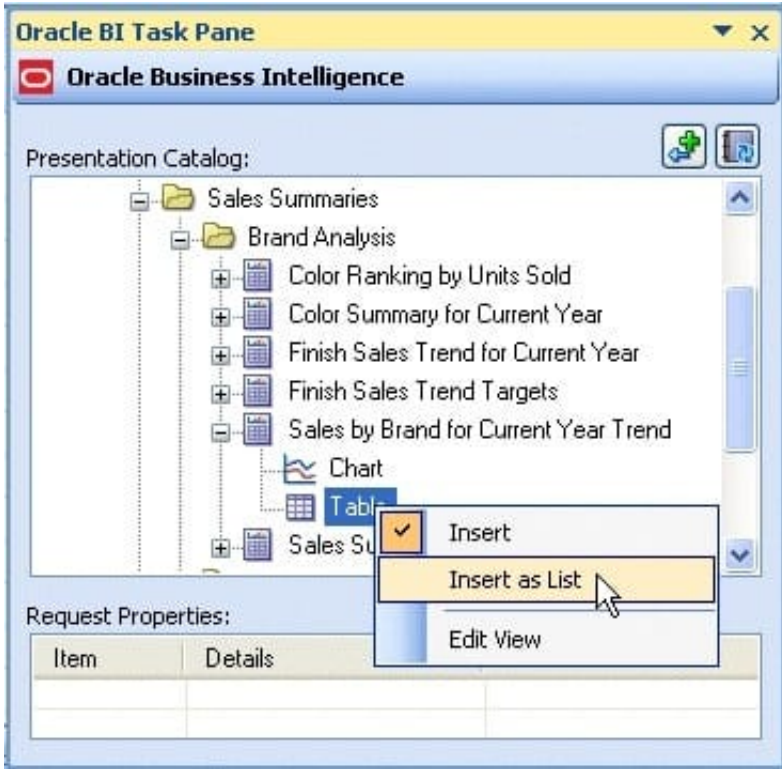
QUESTION 5

What are the two capabilities that users can apply to an Analysis when working within Plug- In for MS Office?

- A. Edit Analysis
- B. Refresh All
- C. Edit Prompts and Levels
- D. Publish

Correct Answer: BC

C: Right-click Table and select Insert as List from the shortcut menu. The Edit Prompts and Levels dialog box appears. Accept the default options and click Insert.



Explanation: B: Click Refresh All from the Oracle BI menu in PowerPoint to refresh all the refreshable objects in the presentation.

Reference: Using Oracle Business Intelligence Office Add-Ins with Oracle Business Intelligence Enterprise Edition (10.1.3.4) on Windows

[1Z0-591 VCE Dumps](#)

[1Z0-591 Practice Test](#)

[1Z0-591 Exam Questions](#)