



# 200-310<sup>Q&As</sup>

Designing for Cisco Internetwork Solutions

## Pass Cisco 200-310 Exam with 100% Guarantee

Free Download Real Questions & Answers **PDF** and **VCE** file from:

<https://www.pass4lead.com/200-310.html>

100% Passing Guarantee  
100% Money Back Assurance

Following Questions and Answers are all new published by Cisco  
Official Exam Center

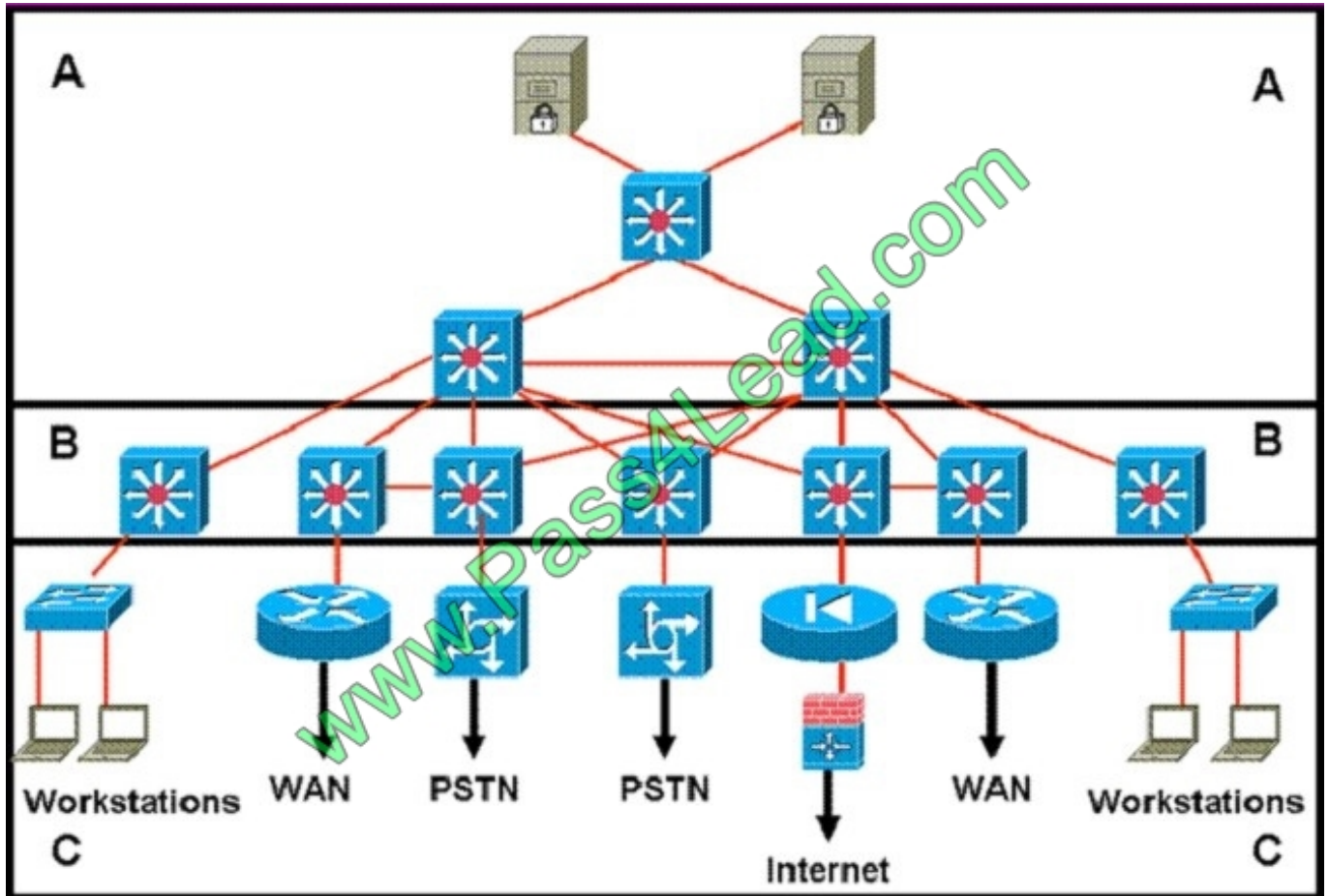
-  **Instant Download** After Purchase
-  **100% Money Back** Guarantee
-  **365 Days** Free Update
-  **800,000+** Satisfied Customers





### QUESTION 1

Refer to the exhibit.



Which statement accurately represents the characteristics of the core layer in this design?

- A. QoS should only be performed only in the core.
- B. Load balancing should never be implemented or used.
- C. Access lists should be used in the core to perform packet manipulation.
- D. Partial mesh should be used as long as it is connected to each device by multiple paths.
- E. Policy-based traffic control should be implemented to enable prioritization and ensure the best performance for all time-critical applications.

Correct Answer: D

### QUESTION 2

An engineer has configured a router to send level 7 messages to a syslog server. What severity level are these messages?



- A. error
- B. warning
- C. debug
- D. informational
- E. notice

Correct Answer: C

---

### QUESTION 3

Which IPv4 field are the precedence bits located in?

- A. IP destination address
- B. Type-of-service field
- C. IP options field
- D. IP protocol field

Correct Answer: B

---

### QUESTION 4

Which three are associated with the distribution layer within the campus design? (Choose three.)

- A. access layer aggregation
- B. route summarization
- C. network trust boundary
- D. next-hop redundancy
- E. layer 2 switching
- F. port security
- G. broadcast suppression

Correct Answer: ABD

---

### QUESTION 5

An internal network has servers with private IPv4 addresses that must be visible from the public network. Which kind of address translation should be used to ensure this?



- A. many-to-one translation (PAT)
- B. many-to-one translation (Dynamic NAT)
- C. one-to-one translation (Static NAT)
- D. one-to-one translation (NAT Traversal)

Correct Answer: C

[Latest 200-310 Dumps](#)

[200-310 PDF Dumps](#)

[200-310 Braindumps](#)



To Read the [Whole Q&As](#), please purchase the [Complete Version](#) from [Our website](#).

## Try our product !

100% Guaranteed Success

100% Money Back Guarantee

365 Days Free Update

Instant Download After Purchase

24x7 Customer Support

Average 99.9% Success Rate

More than 800,000 Satisfied Customers Worldwide

Multi-Platform capabilities - [Windows](#), [Mac](#), [Android](#), [iPhone](#), [iPod](#), [iPad](#), [Kindle](#)

We provide exam PDF and VCE of Cisco, Microsoft, IBM, CompTIA, Oracle and other IT Certifications. You can view Vendor list of All Certification Exams offered:

<https://www.pass4lead.com/allproducts>

## Need Help

Please provide as much detail as possible so we can best assist you.

To update a previously submitted ticket:



 <p><b>One Year Free Update</b> Free update is available within One Year after your purchase. After One Year, you will get 50% discounts for updating. And we are proud to boast a 24/7 efficient Customer Support system via Email.</p>	 <p><b>Money Back Guarantee</b> To ensure that you are spending on quality products, we provide 100% money back guarantee for 30 days from the date of purchase.</p>	 <p><b>Security &amp; Privacy</b> We respect customer privacy. We use McAfee's security service to provide you with utmost security for your personal information &amp; peace of mind.</p>
---------------------------------------------------------------------------------------------------------------------------------------------------------------------------------------------------------------------------------------------------------------------------------------------------------------------------------	-------------------------------------------------------------------------------------------------------------------------------------------------------------------------------------------------------------------------------------------------------------	------------------------------------------------------------------------------------------------------------------------------------------------------------------------------------------------------------------------------------------------------------------------------------

Any charges made through this site will appear as Global Simulators Limited.

All trademarks are the property of their respective owners.

Copyright © pass4lead, All Rights Reserved.