

# 200-401<sup>Q&As</sup>

Managing Industrial Networks with Cisco Networking Technologies  
(IMINS)

## Pass Cisco 200-401 Exam with 100% Guarantee

Free Download Real Questions & Answers **PDF** and **VCE** file from:

<https://www.pass2lead.com/200-401.html>

100% Passing Guarantee  
100% Money Back Assurance

Following Questions and Answers are all new published by Cisco  
Official Exam Center

- ⚙️ **Instant Download** After Purchase
- ⚙️ **100% Money Back** Guarantee
- ⚙️ **365 Days** Free Update
- ⚙️ **800,000+** Satisfied Customers



**QUESTION 1**

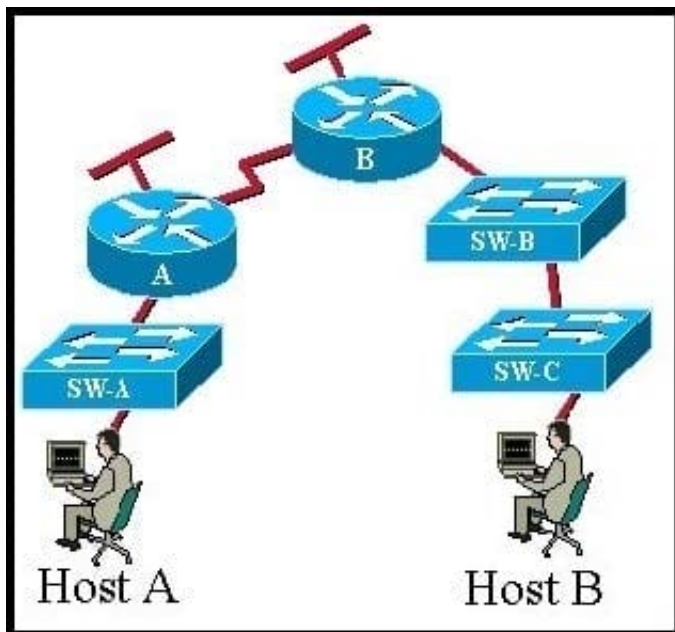
An Ethernet cable is attached to a PC NIC and then attached to a switch port. The PC power is turned on and the switch port link LED turns green. The link light indicates what two conditions? (Choose two.)

- A. Layer 2 communication has been established between the PC and switch.
- B. The PC has received a DHCP address.
- C. Traffic is being sent from the switch to the PC.
- D. If flashing, the green LED indicates port speed of 100 Mb/s.
- E. The Layer 1 media is functioning between the PC and switch.
- F. The switch port is functioning as a half-duplex connection.

Correct Answer: AE

**QUESTION 2**

Exhibit: Refer to the exhibit. CCNA.com has the industrial network shown in the exhibit. All switches are configured as layer 2 switches and are using VLAN 1 as their management VLAN. Each VLAN 1 interface has been assigned the correct IP address. What is the purpose of assigning a default gateway to SW-C switch?



- A. allows connectivity between the VLAN 1 interface on SW-C and other devices in the network.
- B. allows connectivity between Host A and other devices in the network.
- C. allows connectivity between Host B and other devices in the network.
- D. allows the switch to pass traffic between Host A and Host B

Correct Answer: A

---

**QUESTION 3**

Which option best describes a mechanical, ingress, climatic, chemical and electromagnetic environment that is classified as M3 I3 C3 E3?

- A. the highest quality
- B. office environment
- C. severe
- D. serviced by multiple cable segments

Correct Answer: C

---

**QUESTION 4**

Which prompt is used to configure parameters for the Ethernet ports of an industrial switch?

- A. Switch(config-if)#
- B. Switch(config-if-ind)#
- C. Switch(config-line)#
- D. Switch(config-ind)#
- E. Switch(config-vlan)#

Correct Answer: A

---

**QUESTION 5**

With a Cisco IE 2000 switch, what does a power status LED indicate when it is solid green?

- A. Power is present on the associated circuit and the system is operating normally.
- B. Power is present on the associated circuit, but there is no correlation to whether the system is operating normally.
- C. The system is operating normally, but power is not necessarily present on the associated circuit.
- D. Power is not present on the associated circuit and the power supply alarm is configured.
- E. The power status LED does not show solid green.

Correct Answer: A

---

[200-401 PDF Dumps](#)

[200-401 VCE Dumps](#)

[200-401 Braindumps](#)