

201^{Q&As}

TMOS Administration

Pass F5 201 Exam with 100% Guarantee

Free Download Real Questions & Answers **PDF** and **VCE** file from:

<https://www.pass2lead.com/201.html>

100% Passing Guarantee
100% Money Back Assurance

Following Questions and Answers are all new published by F5 Official Exam Center

-  **Instant Download** After Purchase
-  **100% Money Back** Guarantee
-  **365 Days** Free Update
-  **800,000+** Satisfied Customers



QUESTION 1

A virtual server is listening at 10.10.1.100:any and has the following iRule associated with it:

```
when CLIENT_ACCEPTED { if {[TCP::local_port] equals 21 } { pool  
ftppool } elseif {[TCP::local_port] equals 23 } { pool telnetpool }
```

If a user connects to 10.10.1.100 and port 22, which pool will receive the request?

- A. ftpool
- B. telnetpool
- C. None. The request will be dropped.
- D. Unknown. The pool cannot be determined from the information provided.

Correct Answer: D

QUESTION 2

One of the two members of a device group has been decommissioned. The BIG-IP Administrator tries to delete the device group, but is unsuccessful. Prior to removing the device group, which action should be performed?

- A. Disable the device group
- B. Remove all members from the device group
- C. Remove the decommissioned device from the device group
- D. Make sure all members of the device group are in sync

Correct Answer: B

QUESTION 3

Which statement is true about the synchronization process, as performed by the Configuration Utility or by typing `config sync all`?

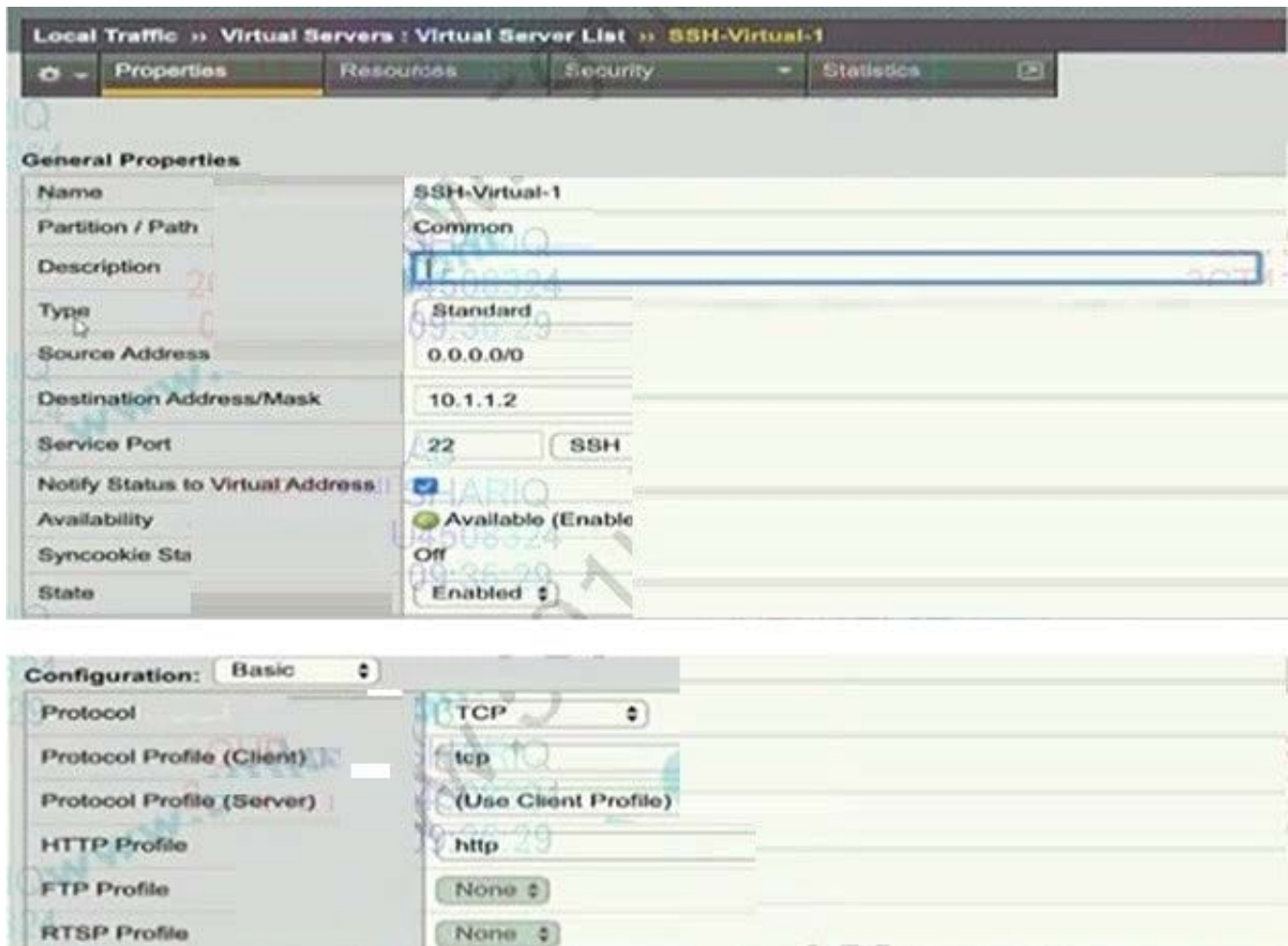
- A. The process should always be run from the standby system.
- B. The process should always be run from the system with the latest configuration.
- C. The two `/config/bigip.conf` configuration files are synchronized (made identical) each time the process is run.
- D. Multiple files, including `/config/bigip.conf` and `/config/bigip_base.conf`, are synchronized (made identical) each time

the process is run.

Correct Answer: C

QUESTION 4

Refer to the exhibit.



A BIG-IP Administrator creates a new Virtual Server to load balance SSH traffic. Users are unable to log on to the servers.

What should the BIG-IP Administrator do to resolve the issue?

- A. Set Protocol to UDP
- B. Set HTTP Profile to None
- C. Set Source Address to 10.1.1.2
- D. Set Destination Addresses/Mask to 0.0.0.0/0

Correct Answer: B

QUESTION 5

An IT support engineer needs to access and modify Virtual Servers in three partitions (Common /Banking and Dev) daily on a BIG-IP device. The company operates a Least Privilege access policy. What level of access does the IT support engineer need to ensure completion of daily roles?

- A. Manager in /common/Banking, and /Dev partitions
- B. Application Editor in /Common, /Banking, and /Dev partitions
- C. Manager in all partitions
- D. Application Editor in all partitions

Correct Answer: A

[201 PDF Dumps](#)

[201 Study Guide](#)

[201 Exam Questions](#)