

250-428^{Q&As}

Administration of Symantec Endpoint Protection 14

Pass Symantec 250-428 Exam with 100% Guarantee

Free Download Real Questions & Answers **PDF** and **VCE** file from:

<https://www.pass2lead.com/250-428.html>

100% Passing Guarantee
100% Money Back Assurance

Following Questions and Answers are all new published by Symantec
Official Exam Center

-  **Instant Download** After Purchase
-  **100% Money Back** Guarantee
-  **365 Days** Free Update
-  **800,000+** Satisfied Customers



QUESTION 1

Which package type should an administrator use to reduce a SEP environment's footprint when considering that new SEP 14 clients will be installed on point of sale terminals?

- A. Default Standard client
- B. Default Embedded or VDI client
- C. Default dark network client
- D. Custom Standard client

Correct Answer: B

References: https://support.symantec.com/en_US/article.HOWTO125381.html

QUESTION 2

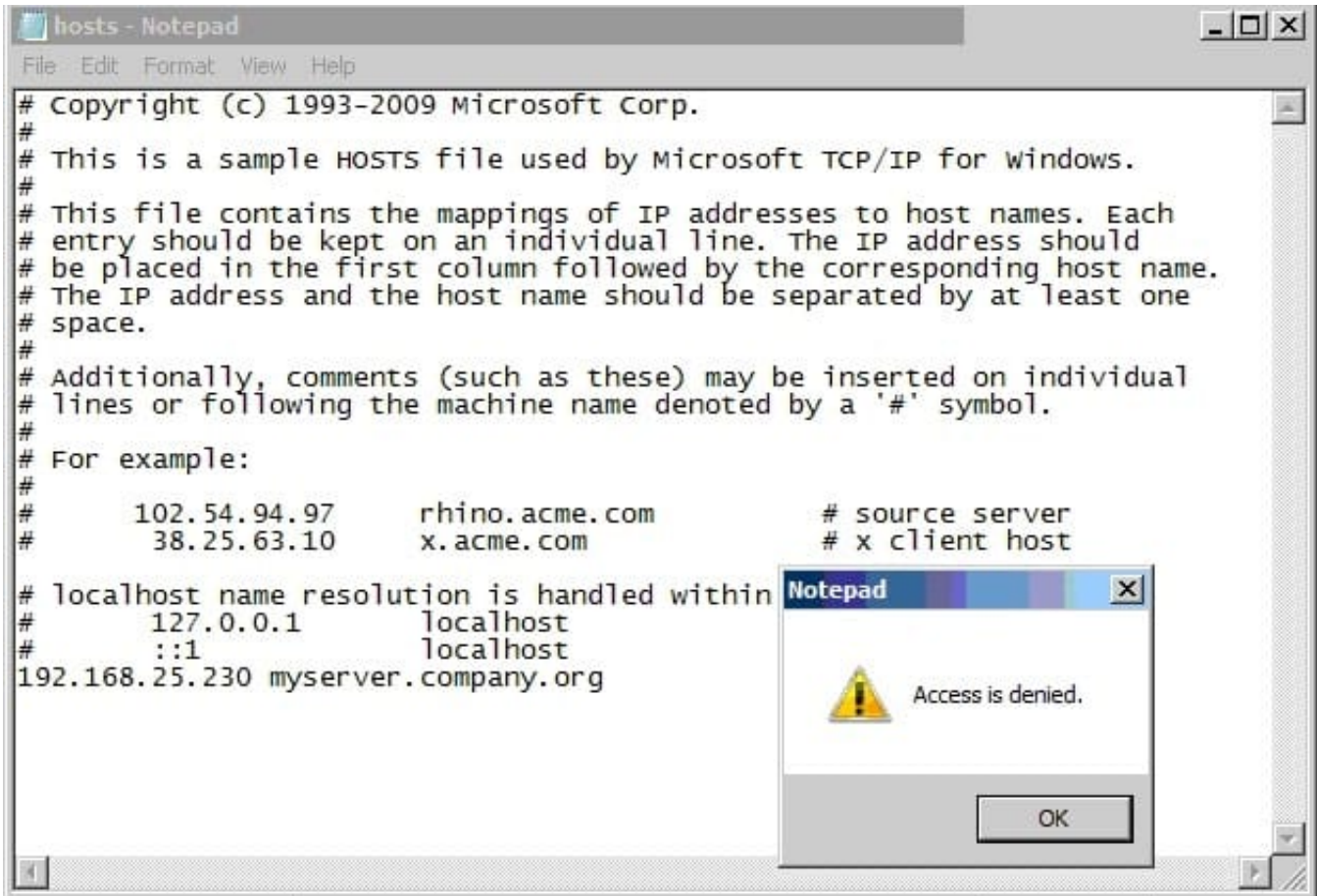
An organization is troubleshooting a SONAR false positive and has created an exclusion for the in-house application generating the detection. How can the organization use Process Explorer to verify that the exclusion works?

- A. Use Process Explorer to see if secars.dll is still there. If secars.dll is still present in the application as an injected process, ensure the updated policy is applied to the group
- B. Use Process Explorer to see if UEngx86.dll is still there. If UEngx86.dll is still present in the application as an injected process, ensure the updated policy is applied to the group
- C. Use Process Explorer to see if IPSFFPI.dll is still there. If IPSFFPI.dll is still present in the application as an injected process, ensure the updated policy is applied to the group
- D. Use Process Explorer to see if sysfer.dll is still there. If sysfer.dll is still present in the application as an injected process, ensure the updated policy is applied to the group

Correct Answer: D

QUESTION 3

Refer to the exhibit.



In the use case displayed in the exhibit.

Why is Notepad unable to save the changes to the file in the image below?

- A. Tamper Protection is preventing Notepad from modifying the host file.
- B. SONAR is set to block host file modifications.
- C. System Lockdown is enabled.
- D. SONAR High Risk detection is set to Block.

Correct Answer: B

QUESTION 4

An administrator is unable to delete a location.

What is the likely cause?

- A. The location currently contains clients.
- B. Criteria is defined within the location.

- C. The administrator has client control enabled.
- D. The location is currently assigned as the default location.

Correct Answer: D

QUESTION 5

Which two criteria should an administrator use when defining Location Awareness for the Symantec Endpoint Protection (SEP) client? (Select two.)

- A. NIC description
- B. SEP domain
- C. geographic location
- D. WINS server
- E. Network Speed

Correct Answer: AD

References: https://support.symantec.com/en_US/article.TECH97369.html

[Latest 250-428 Dumps](#)

[250-428 VCE Dumps](#)

[250-428 Practice Test](#)