

250-428^{Q&As}

Administration of Symantec Endpoint Protection 14

Pass Symantec 250-428 Exam with 100% Guarantee

Free Download Real Questions & Answers **PDF** and **VCE** file from:

<https://www.pass2lead.com/250-428.html>

100% Passing Guarantee
100% Money Back Assurance

Following Questions and Answers are all new published by Symantec
Official Exam Center

- ⚙️ **Instant Download** After Purchase
- ⚙️ **100% Money Back** Guarantee
- ⚙️ **365 Days** Free Update
- ⚙️ **800,000+** Satisfied Customers



QUESTION 1

An organization has a small group of servers with large drive volumes.

What setting in the Virus and Spyware Protection policy can the organization utilize when scheduling scans on these servers?

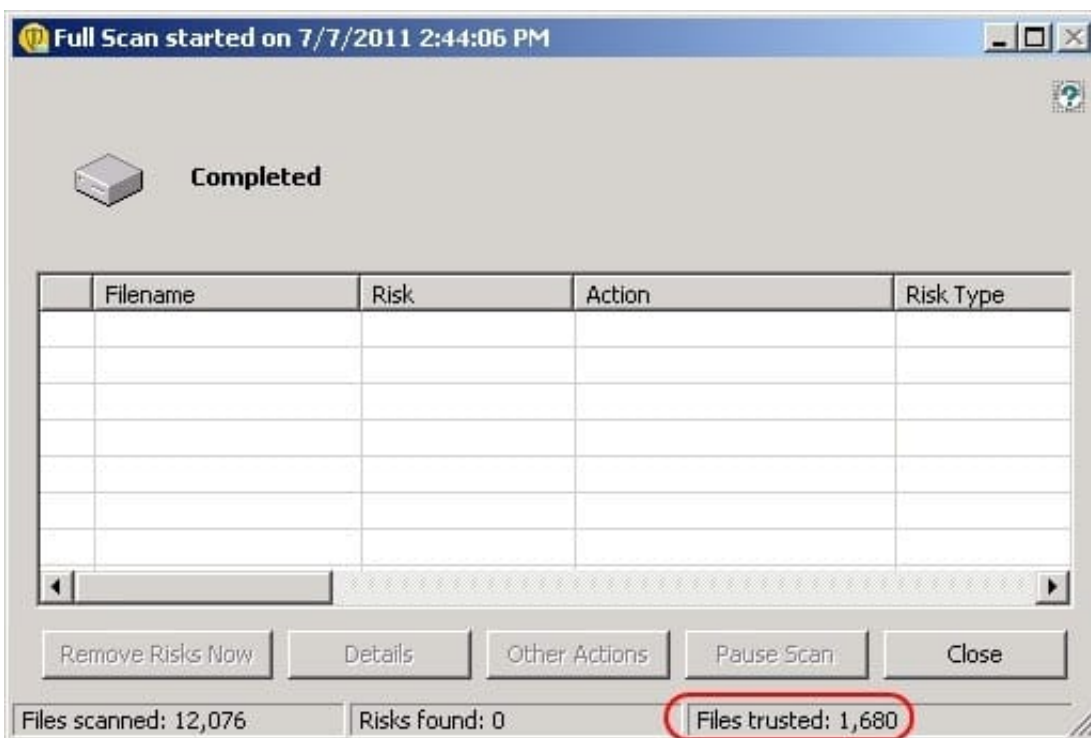
- A. Use resumable scans
- B. Use Shared Insight Cache
- C. Adjust Auto Protect Settings
- D. Randomize scheduled scans

Correct Answer: A

Reference: <https://support.symantec.com/us/en/article.HOWTO80934.html>

QUESTION 2

Refer to the exhibit.



Which settings can impact the Files trusted count?

- A. SONAR settings in the Virus and Spyware Protection policy
- B. System Lockdown Whitelist in the Application and Device Control policy

- C. Insight settings in the Virus and Spyware Protection policy
- D. File Cache settings in the Virus and Spyware Protection policy

Correct Answer: C

QUESTION 3

An administrator needs to identify infected computers that require a restart to finish remediation of a threat. What steps in the SEPM should an administrator perform to identify and restart the systems?

- A. View the Computer Status log to determine if any computers require a restart. Run a command from the SONAR log to restart computers.
- B. View the Computer Status log to determine if any computers require a restart. Run a command from the Attack log to restart computers.
- C. View the SONAR log to determine if any computers require a restart. Run a command from the Computer Status log to restart computers.
- D. View the Computer Status log to determine if any computers require a restart. Run a command from the Risk log to restart computers.

Correct Answer: D

Reference: <https://support.symantec.com/us/en/article.HOWTO80936.html>

QUESTION 4

What is an appropriate use of a file fingerprint list?

- A. allow unknown files to be downloaded with Insight
- B. prevent programs from running
- C. prevent AntiVirus from scanning a file
- D. allow files to bypass Intrusion Prevention detection

Correct Answer: B

QUESTION 5

In which two areas can host groups be used? (Select two.)

- A. Locations
- B. Download Insight
- C. IPS

D. Application and Device Control

E. Firewall

Correct Answer: CE

[Latest 250-428 Dumps](#)

[250-428 Study Guide](#)

[250-428 Exam Questions](#)