

2V0-621^{Q&As}

VMware Certified Professional 6 – Data Center Virtualization

Pass VMware 2V0-621 Exam with 100% Guarantee

Free Download Real Questions & Answers **PDF** and **VCE** file from:

<https://www.pass2lead.com/2v0-621.html>

100% Passing Guarantee
100% Money Back Assurance

Following Questions and Answers are all new published by VMware
Official Exam Center

- ⚙️ **Instant Download** After Purchase
- ⚙️ **100% Money Back** Guarantee
- ⚙️ **365 Days** Free Update
- ⚙️ **800,000+** Satisfied Customers



QUESTION 1

Where is a Virtual SAN Fault Domain configured?

- A. VMware Virtual SAN Cluster configuration
- B. VMware High Availability Cluster configuration
- C. Distributed Resource Scheduler configuration
- D. Datacenter Advanced Settings configuration

Correct Answer: A

Procedure

- 1 Navigate to the Virtual SAN cluster in the vSphere Web Client.
- 2 Click the Manage tab and click Settings.
- 3 Under Virtual SAN, click Fault Domains and Stretched Cluster.



- 4 Click the Create a new fault domain icon ().
 - 5 Type the fault domain name.
 - 6 From the Show drop-down menu, select Hosts not in fault domain to view the list of hosts that are not assigned to a fault domain or select Show All Hosts to view all hosts in the cluster.
 - 7 Select one or more hosts to add to the fault domain.
- A fault domain cannot be empty. You must select at least one host to include in the fault domain.
- 8 Click OK.

The selected hosts appear in the fault domain

Reference: <https://pubs.vmware.com/vsphere-60/index.jsp?topic=%2Fcom.vmware.vsphere.virtualsan.doc%2FGUID-C365ACE8-7485-4463-A12C-71D1917A4930.html>

QUESTION 2

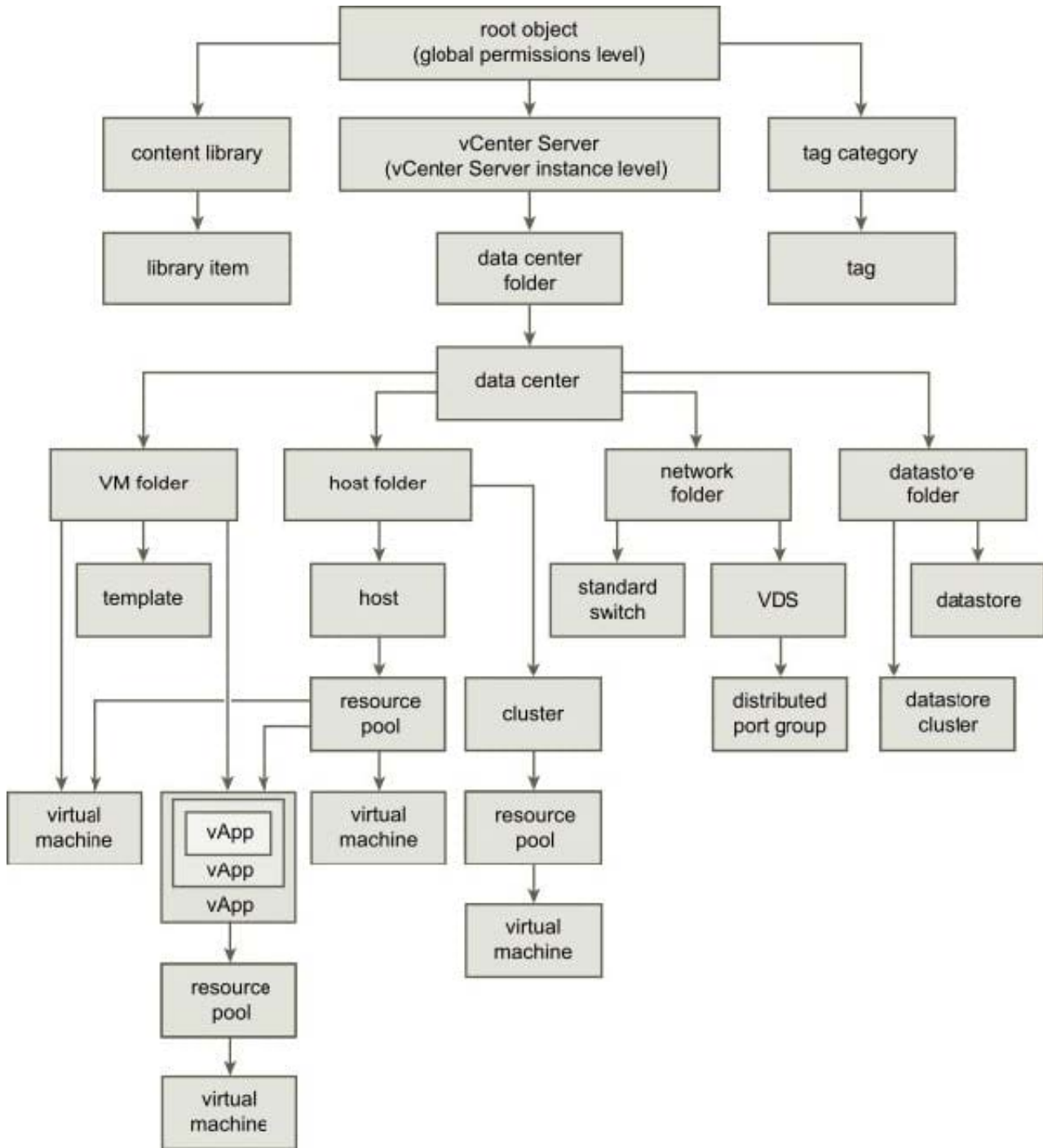
A user notifies an administrator that Content Libraries are not visible.

What is a possible solution?

- A. Assign the user the read-only role at the global permission level.
- B. Assign the user the read-only role at the vCenter Server root level.

- C. Assign the user the read-only role at the vCenter Server data center level.
- D. Assign the user the read-only role at the vCenter Server cluster level.

Correct Answer: A



Reference: https://pubs.vmware.com/vsphere-60/index.jsp?topic=%2Fcom.vmware.vsphere.vm_admin.doc%2FGUID18F4B892-D685-4473-AC25-3195D68DFD90.html

QUESTION 3

An administrator notices that 8 out of 10 virtual machines have memory ballooning and swapping. However, virtual machine 9 is not ballooning or swapping and virtual machine 10 is not ballooning but is swapping.

Which two statements explain the behavior of virtual machine 9 and virtual machine 10? (Choose two.)

- A. Virtual machine 9 has a 100% memory reservation.
- B. Virtual machine 10 has a memory limit configured.
- C. Virtual machine 9 has memory shares set to HIGH.
- D. Virtual machine 10 does not have VMware Tools enabled or installed.

Correct Answer: AD

If the memory usage value is high, and the host has high ballooning or swapping, check the amount of free physical memory on the host. A free memory value of 6% or less indicates that the host cannot handle the demand for memory. This leads to memory reclamation, which might degrade performance. If the host has enough free memory, check the resource shares, reservation, and limit settings of the virtual machines and resource pools on the host. Verify that the host settings are adequate and not lower than those set for the virtual machines. D-) Verify that VMware Tools is installed on each virtual machine. The balloon driver is installed with VMware Tools and is critical to performance. If VMware tools are not installed/outdated showing on summary tab Ballooning will not work hence swapping will work because it has nothing to do with ballooning. Fact: If memory is not available the memory can be mapped to the .vswp file on a vmfs or nfs datastore. The virtual machine has no knowledge if the memory is mapped to physical memory or to a disk. This is called hypervisor swapping, and this is the last resort for the vmkernel to use this mechanism. (Internal VMware KB article but for external you may check VMBlog or external links: https://kb.vmware.com/selfservice/microsites/search.do?language=en_US&cmd=displayKc&externalId=1003470)

QUESTION 4

Which two statements are true regarding Storage Multipathing Plug-Ins? (Choose two.)

- A. The default Path Selection Policy is VMW_PSP_MRU for iSCSI or FC devices.
- B. The default Path Selection Policy is VMW_PSP_FIXED for iSCSI or FC devices.
- C. VMW_PSP_MRU is typically selected for ALUA arrays by default.
- D. VMW_PSP_FIXED is typically selected for ALUA arrays by default.

Correct Answer: BC

: By default, the VMware NMP supports the following PSPs:

VMW_PSP_MRU The host selects the path that it used most recently. When the path becomes unavailable, the host selects an alternative path. The host does not revert back to the original path when that path becomes available again. There is no preferred path setting with the MRU policy. MRU is the default policy for most active-passive storage devices. Displayed in the vSphere Client as the Most Recently Used (VMware) path selection policy. **VMW_PSP_FIXED** The host uses the designated preferred path, if it has been configured. Otherwise, it selects the first working path discovered at system boot time. If you want the host to use a particular preferred path, specify it manually. Fixed is the default policy for most active-active storage devices. Note If the host uses a default preferred path and the path's status turns to Dead, a new path is selected as preferred. However, if you explicitly designate the preferred path, it will remain preferred even when it becomes inaccessible.

Reference: <https://pubs.vmware.com/vsphere-51/index.jsp?topic=%2Fcom.vmware.vsphere.storage.doc%2FGUID-B7AD0CA0-CBE2-4DB4-A22C-AD323226A257.html>

QUESTION 5

An administrator has created a resource pool named Marketing HTTP with a Memory Limit of 24 GB and a CPU Limit of 10,000 MHz.

The Marketing HTTP resource pool contains three virtual machines:

1.

Mktg-SQL has a memory reservation of 16 GB.

2.

Mktg-App has a memory reservation of 6 GB.

3.

Mktg-Web has a memory reservation of 4 GB.

What would happen if all three virtual machines are powered on?

A. All three virtual machines can power on, but will have memory contention.

B. All three virtual machines can power on without memory contention.

C. Only two of the three virtual machines can power on.

D. Only one of the virtual machines can power on.

Correct Answer: C

Applying a limit on a vCPU and memory will slow your VM down no matter what because of distribution of resources. Even if there are no other VMs running on that 4 socket quad core host. Powering on all the virtual machine will enables 100% resources to be used by VM hence, only few required VM's will powered "On" which requires the maximum utilization from the available resources. Example: When a single (or two) VM has a limit of 5000MHz and 16GB, 6 GB Memory = 22gb utilization will be high and is the only VM running on a host than it will run it full speed as it will be constantly rescheduled for 5000MHz and maximum memory (22-24 GB) Check:

https://kb.vmware.com/selfservice/microsites/search.do?language=en_US&cmd=displayKcandexternalId=2032906

Or Resource Pool Metrics: <https://pubs.vmware.com/.../GUID-6F436275-169F-4DE5-B393-3B771623C0F8.htm>.

[Latest 2V0-621 Dumps](#)

[2V0-621 PDF Dumps](#)

[2V0-621 VCE Dumps](#)