



# 300-210<sup>Q&As</sup>

Cisco Threat Control Solutions

## Pass Cisco 300-210 Exam with 100% Guarantee

Free Download Real Questions & Answers **PDF** and **VCE** file from:

<https://www.pass4lead.com/300-210.html>

100% Passing Guarantee  
100% Money Back Assurance

Following Questions and Answers are all new published by Cisco  
Official Exam Center

-  **Instant Download** After Purchase
-  **100% Money Back** Guarantee
-  **365 Days** Free Update
-  **800,000+** Satisfied Customers





#### QUESTION 1

In which two places can thresholding settings be configured? (Choose two.)

- A. globally, per intrusion policy
- B. globally, within the network analysis policy
- C. on each access control rule
- D. on each IPS rule
- E. per preprocessor, within the network analysis policy

Correct Answer: CD

---

#### QUESTION 2

When the WSA policy trace tool is used to make a request to the proxy, where is the request logged?

- A. proxy logs
- B. access logs
- C. authentication logs
- D. The request is not logged

Correct Answer: B

---

#### QUESTION 3

Which option is a benefit of Cisco hybrid email security?

- A. on-premises control of outbound data
- B. advanced malware protection
- C. email encryption
- D. message tracking

Correct Answer: A

---

#### QUESTION 4

The Web Cache Communication Protocol (WCCP) is a content-routing protocol that can facilitate the redirection of traffic flows in real time. Your organization has deployed WCCP to redirect web traffic that traverses their Cisco Adaptive Security Appliances (ASAs) to their Cisco Web Security Appliances (WSAs).

The simulator will provide access to the graphical user interfaces of one Cisco ASA and one Cisco WSA that are



participating in a WCCP service. Not all aspects of the GUIs are implemented in the simulator. The options that have been implemented are sufficient to determine the best answer to each of the questions that are presented.

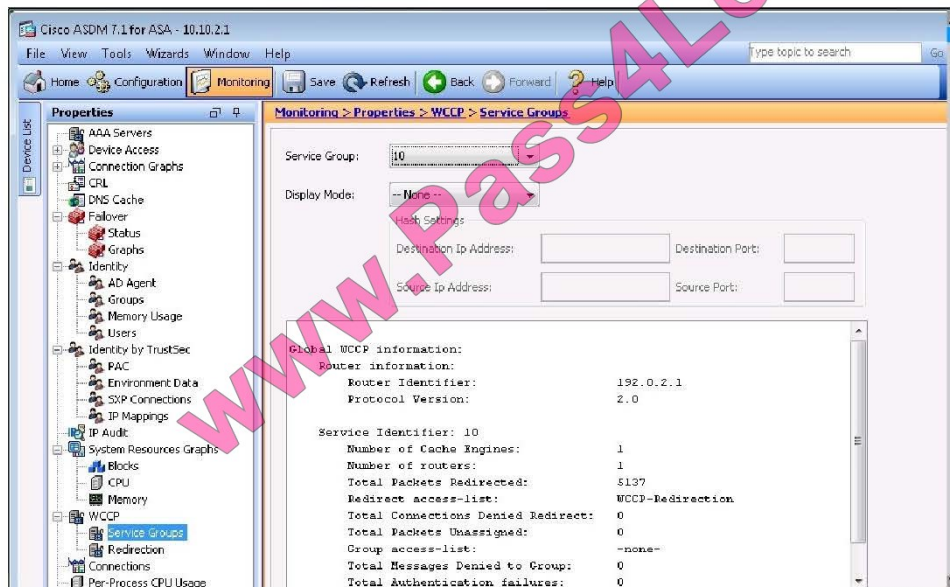
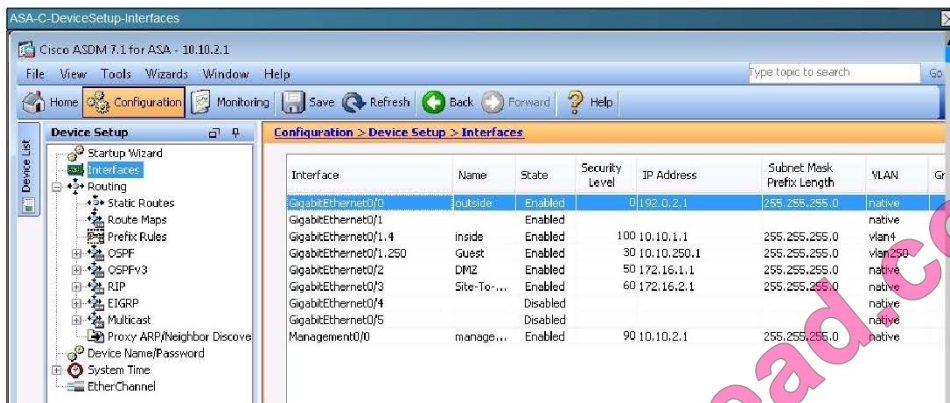
Your task is to examine the details available in the simulated graphical user interfaces and select the best answer.



Adaptive Security Appliance



Web Security Appliance





The screenshot shows the Cisco S100V Web Security Virtual Appliance configuration page. The user is logged in as 'admin' on 'wsa.secure-x.local'. The 'System Administration' tab is selected. The 'Interfaces' section is expanded, showing a table of interfaces:

| Interfaces: | Ethernet Port | IP Address | Netmask       | Hostname                |
|-------------|---------------|------------|---------------|-------------------------|
| M1          |               | 10.10.2.50 | 255.255.255.0 | wsa-mgmt.secure-x.local |
| P1          |               | 10.10.1.50 | 255.255.255.0 | wsa.secure-x.local      |

Below the table, there are configuration options:

- Separate Routing for Management Services: Separate routing (M1 port restricted to appliance management services only)
- Appliance Management Services: HTTP on port 80, HTTPS on port 443, Redirect HTTP request to HTTPS
- L4 Traffic Monitor Wiring: Duplex TAP: T1 (In/Out)

An 'Edit Settings...' button is located at the bottom right of the configuration area.

Between the Cisco ASA configuration and the Cisco WSA configuration, what is true with respect to redirected ports?

- A. Both are configured for port 80 only.
- B. Both are configured for port 443 only.
- C. Both are configured for both port 80 and 443.
- D. Both are configured for ports 80, 443 and 3128.
- E. There is a configuration mismatch on redirected ports.

Correct Answer: C

This can be seen from the WSA Network tab shown below: This can be seen from the WSA Network tab shown below:



| WSA-Network-WccpService |  |
|-------------------------|--|
|                         | <p><input checked="" type="radio"/> Dynamic service ID: <input type="text" value="10"/> 0-255</p> <p>Port numbers: <input type="text" value="80,443"/><br/><i>(up to 8 port numbers, separated by commas)</i></p> <p><input checked="" type="radio"/> Redirect based on destination port</p> <p><input type="radio"/> Redirect based on source port (return path)<br/><i>For IP spoofing, define two services, one based on destination port and another based on source port (return path).</i></p> <p><input checked="" type="radio"/> Load balance based on server address</p> <p><input type="radio"/> Load balance based on client address<br/><i>Applies only if more than one Web Security Appliance is in use.</i></p> |
| Router IP Addresses:    | <input type="text" value="10.10.1.1"/><br><i>Separate multiple entries with line breaks or commas.</i>   |
| Router Security:        | <input checked="" type="checkbox"/> Enable Security for Service  |
|                         | Password: <input type="password" value="....."/><br><i>The password must be between 1 and 7 characters long.</i>   |
|                         | Confirm Password: <input type="password" value="....."/>   |
| ▶ Advanced:             | Optional settings for customizing the behavior of the WCCP v2 Router.  |

**QUESTION 5**

Which three zones are used for anomaly detection in a Cisco IPS? (Choose three.)

- A. internal zone
- B. external zone
- C. illegal zone
- D. inside zone
- E. outside zone
- F. DMZ zone

Correct Answer: ABC

[Latest 300-210 Dumps](#)

[300-210 Study Guide](#)

[300-210 Exam Questions](#)



To Read the [Whole Q&As](#), please purchase the [Complete Version](#) from [Our website](#).

## Try our product !

100% Guaranteed Success

100% Money Back Guarantee

365 Days Free Update

Instant Download After Purchase

24x7 Customer Support

Average 99.9% Success Rate

More than 800,000 Satisfied Customers Worldwide

Multi-Platform capabilities - [Windows](#), [Mac](#), [Android](#), [iPhone](#), [iPod](#), [iPad](#), [Kindle](#)

We provide exam PDF and VCE of Cisco, Microsoft, IBM, CompTIA, Oracle and other IT Certifications. You can view Vendor list of All Certification Exams offered:

<https://www.pass4lead.com/allproducts>

## Need Help

Please provide as much detail as possible so we can best assist you.

To update a previously submitted ticket:



|   |   |  |
|---|---|--|
|  <p><b>One Year Free Update</b><br/>Free update is available within One Year after your purchase. After One Year, you will get 50% discounts for updating. And we are proud to boast a 24/7 efficient Customer Support system via Email.</p> |  <p><b>Money Back Guarantee</b><br/>To ensure that you are spending on quality products, we provide 100% money back guarantee for 30 days from the date of purchase.</p> |  <p><b>Security &amp; Privacy</b><br/>We respect customer privacy. We use McAfee's security service to provide you with utmost security for your personal information &amp; peace of mind.</p> |
|---|---|--|

Any charges made through this site will appear as Global Simulators Limited.

All trademarks are the property of their respective owners.

Copyright © pass4lead, All Rights Reserved.