

# 300-430<sup>Q&As</sup>

Implementing Cisco Enterprise Wireless Networks (ENWLSI)

## Pass Cisco 300-430 Exam with 100% Guarantee

Free Download Real Questions & Answers **PDF** and **VCE** file from:

<https://www.pass2lead.com/300-430.html>

100% Passing Guarantee  
100% Money Back Assurance

Following Questions and Answers are all new published by Cisco  
Official Exam Center

- ⚙️ **Instant Download** After Purchase
- ⚙️ **100% Money Back** Guarantee
- ⚙️ **365 Days** Free Update
- ⚙️ **800,000+** Satisfied Customers



**QUESTION 1**

An engineer is deploying a virtual MSE. The network has 3000 APs and needs 7000 IPS licenses. To which size server does the engineer scale it?

- A. virtual
- B. standard
- C. high end
- D. low end

Correct Answer: C

---

**QUESTION 2**

Which two statements about the requirements for a Cisco Hyperlocation deployment are true? (Choose two.)

- A. After enabling Cisco Hyperlocation on Cisco CMX, the APs and the wireless LAN controller must be restarted.
- B. NTP can be configured, but that is not recommended.
- C. The Cisco Hyperlocation feature must be enabled on the wireless LAN controller and Cisco CMX.
- D. The Cisco Hyperlocation feature must be enabled only on the wireless LAN controller.
- E. If the Cisco CMX server is a VM, a high-end VM is needed for Cisco Hyperlocation deployments.

Correct Answer: CE

<https://www.cisco.com/c/en/us/products/collateral/wireless/mobility-services-engine/datasheet-c78-734648.html>

---

**QUESTION 3**

An engineer needs read/write access to rename access points and add them to the correct AP groups on a wireless controller. Using Cisco ISE TACACS, which custom attributes is the minimum required?

- A. role1=WLAN
- B. role1=WLAN role2=SECURITY
- C. role1=WLAN role2=WIRELESS
- D. role1=WIRELESS

Correct Answer: D

---

**QUESTION 4**

After looking in the logs, an engineer notices that RRM keeps changing the channels for non-IEEE 802.11 interferers. After surveying the area, it has been decided that RRM should not change the channel. Which feature must be enabled to ignore non-802.11 interference?

- A. Avoid Cisco AP Load
- B. Avoid Persistent Non-WiFi Interference
- C. Avoid Foreign AP Interference
- D. Avoid Non-802.11 Noise

Correct Answer: B

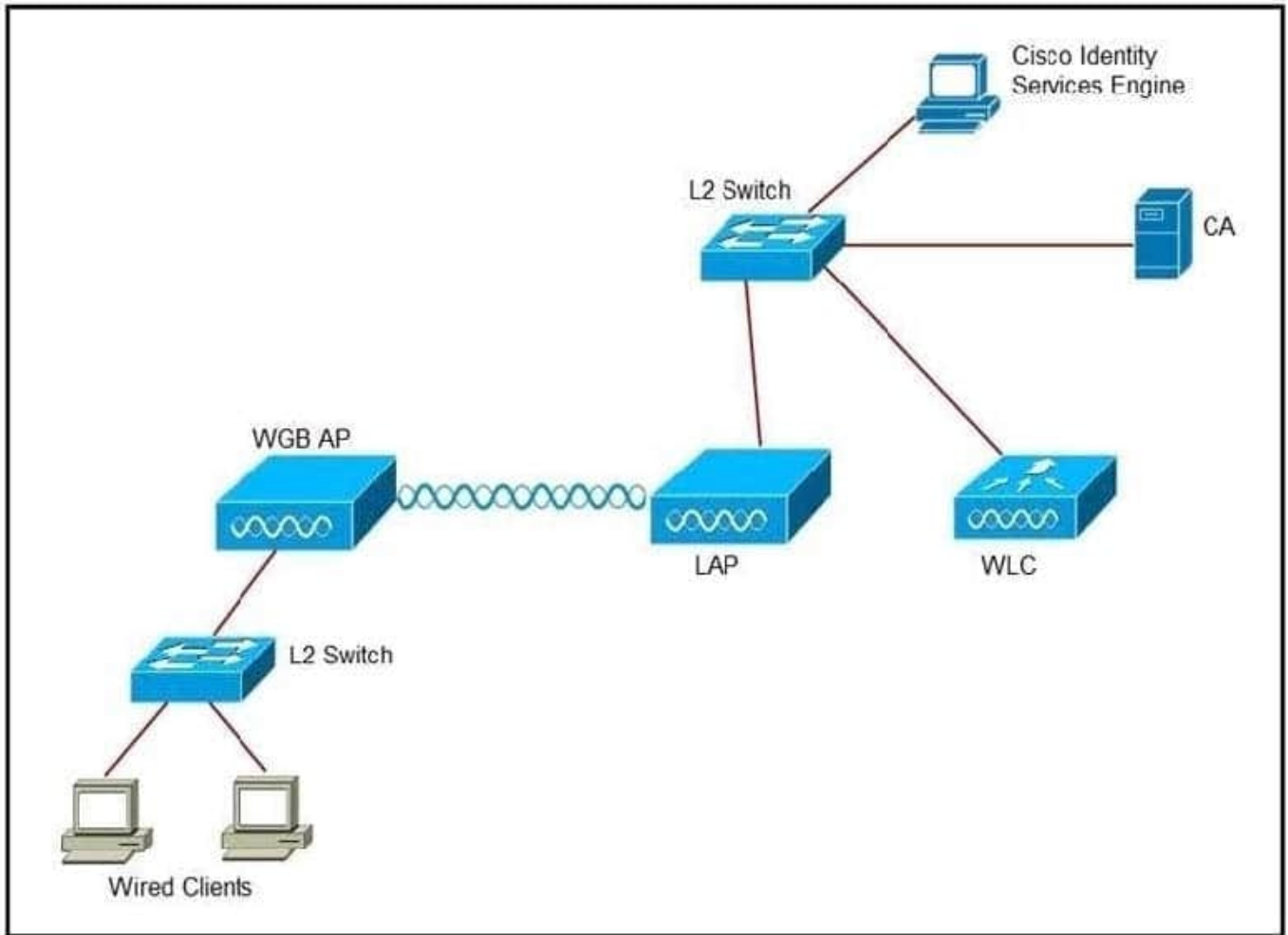
Check the Avoid Non-802.11a (802.11b) Noise check box to cause the controller's RRM algorithms to consider noise (non-802.11 traffic) in the channel when assigning channels to lightweight access points, or uncheck it to disable this feature. For example, RRM may have access points avoid channels with significant interference from nonaccess point sources, such as microwave ovens. The default value is selected. Check the Avoid Persistent Non-WiFi Interference check box to configure the controller to stop ignoring persistent non-Wi-Fi interference in new channel calculation. The persistent non-Wi-Fi interference is considered during the metric calculation for channels.

[https://www.cisco.com/c/en/us/td/docs/wireless/controller/9800/configure-guide/b\\_wi\\_16\\_10\\_cg/radio-resource-management.html](https://www.cisco.com/c/en/us/td/docs/wireless/controller/9800/configure-guide/b_wi_16_10_cg/radio-resource-management.html) [https://www.cisco.com/c/en/us/td/docs/wireless/controller/8-6/config-guide/b\\_cg86/radio\\_resource\\_management.html](https://www.cisco.com/c/en/us/td/docs/wireless/controller/8-6/config-guide/b_cg86/radio_resource_management.html)

---

## QUESTION 5

Refer to the exhibit.



An engineer must connect a fork lift via a WGB to a wireless network and must authenticate the WGB certificate against the RADIUS server. Which three steps are required for this configuration? (Choose three.)

- A. Configure the certificate, WLAN, and radio interface on WGB.
- B. Configure the certificate on the WLC.
- C. Configure WLAN to authenticate using ISE.
- D. Configure the access point with the root certificate from ISE.
- E. Configure WGB as a network device in ISE.
- F. Configure a policy on ISE to allow devices to connect that validate the certificate.

Correct Answer: ACF

- A. Configure the certificate, WLAN, and radio interface on WGB. --> That's true
- B. Configure the certificate on the WLC. --> Nope, the WLC is the authenticator, it is neither authenticated or needs to authenticate anything
- C. Configure WLAN to authenticate using ISE. --> True, on the controller the SSID to which the WGB will connect must be configured, and broadcasted by the LAP

D. Configure the access point with the root certificate from ISE. --> If they are talking about the WGB access point, then that's true, the root certificate that signed ISE certificate needs to be installed in the WGB AP

E. Configure WGB as a network device in ISE. --> That's surely wrong. The WGB is not the authenticator in the dot1x process. It is the client. The controller is the authenticator.

F. Configure a policy on ISE to allow devices to connect that validate the certificate. --> As I understand it, in some ways, that's true. We need to create an authentication/authorization policy on ISE so that the WGB AP will be authenticated by ISE based on the its certificate.

[300-430 PDF Dumps](#)

[300-430 Practice Test](#)

[300-430 Exam Questions](#)