

300-515^{Q&As}

Implementing Cisco Service Provider VPN Services (SVPI)

Pass Cisco 300-515 Exam with 100% Guarantee

Free Download Real Questions & Answers **PDF** and **VCE** file from:

<https://www.pass2lead.com/300-515.html>

100% Passing Guarantee
100% Money Back Assurance

Following Questions and Answers are all new published by Cisco
Official Exam Center

- ⚙️ **Instant Download** After Purchase
- ⚙️ **100% Money Back** Guarantee
- ⚙️ **365 Days** Free Update
- ⚙️ **800,000+** Satisfied Customers



QUESTION 1

The CTO of a company requires the support of a network consultant to deliver an MPLS solution without resigning to a certain degree of redundancy and scalability. Which solution effectively scales to hundreds or thousands of sites?

- A. L2VPN with the broadcast traffic processed at the ingress PE.
- B. L3VPN with direct LSP connectivity between all PEs.
- C. L2VPN by encapsulating multiple frame formats with interworking.
- D. L3VPN using a hierarchical topology of N-PEs and U-PEs.

Correct Answer: D

QUESTION 2

What do routers on the network use to avoid routing loops when OSPF is running as the PE-CE routing protocol on a service provider network?

- A. the AS-Override feature
- B. the DN bit with type 3, 5, or 7 LSA
- C. the domain tag for type 2 LSA
- D. sham links to create a super backbone over the service provider network

Correct Answer: B

QUESTION 3

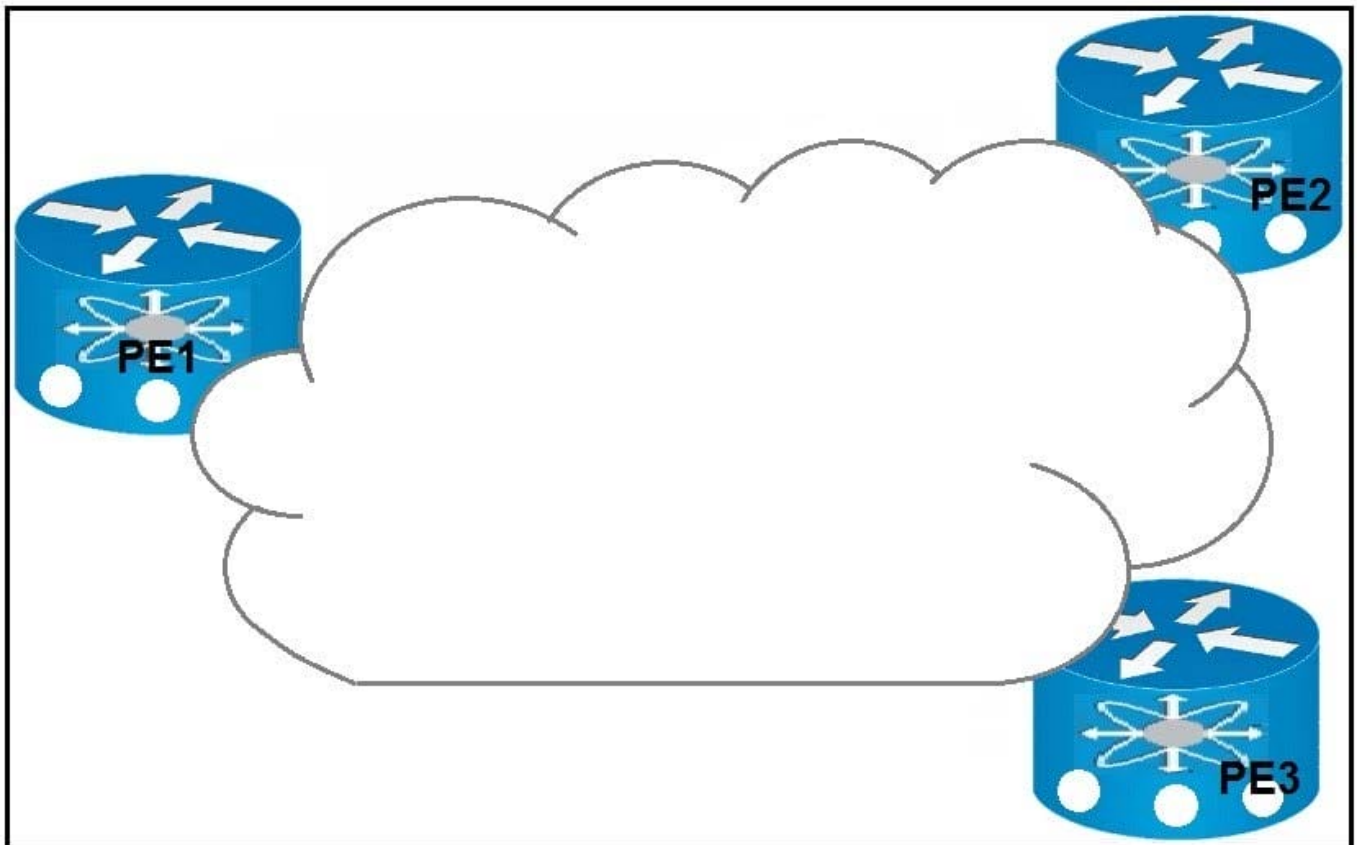
Which mechanism reduces the network flooding caused by host ARP learning behavior?

- A. ARP suppression
- B. storm control
- C. root guard
- D. BPDU guard

Correct Answer: A

Reference: <https://www.cisco.com/c/en/us/products/collateral/switches/nexus-7000-series-switches/white-paper-c11-735015.html>

QUESTION 4



Refer to the exhibit. Which result occurs when PE1 learns a new MAC address and all three PEs are enabled with EVPN native?

- A. A system notification is sent to the network administrator that triggers the manual configuration of the new MAC address on PE2 and PE3.
- B. The new MAC address is sent by BGP to PE2 and PE3 as a Type 2 BGP route.
- C. The MAC address is entered into the CAM table and is classified for use on the native VLAN
- D. The MAC address is entered into the CAM table only if it is learned on the native VLAN.

Correct Answer: B

Reference: https://www.cisco.com/c/en/us/td/docs/routers/asr9000/software/asr9k-r6-4/lxvpn/configuration/guide/b-l2vpn-cg-asr9000-64x/b-l2vpn-cg-asr9000-64x_chapter_01011.html

QUESTION 5

While troubleshooting EoMPLS configuration problems, which three parameters should an engineer match between the two ends of the pseudowire configurations? (Choose three.)

- A. VLAN name
- B. Xconnect group name
- C. EFP subinterface number

D. pseudowire ID

E. MTU size

F. control word usage

Correct Answer: DEF

Reference: <https://www.cisco.com/c/en/us/support/docs/multiprotocol-label-switching-mpls/mpls/213238-mpls-l2vpn-pseudowire.html>

[Latest 300-515 Dumps](#)

[300-515 VCE Dumps](#)

[300-515 Exam Questions](#)