

300-515^{Q&As}

Implementing Cisco Service Provider VPN Services (SVPI)

Pass Cisco 300-515 Exam with 100% Guarantee

Free Download Real Questions & Answers **PDF** and **VCE** file from:

<https://www.pass2lead.com/300-515.html>

100% Passing Guarantee
100% Money Back Assurance

Following Questions and Answers are all new published by Cisco
Official Exam Center

- ⚙️ **Instant Download** After Purchase
- ⚙️ **100% Money Back** Guarantee
- ⚙️ **365 Days** Free Update
- ⚙️ **800,000+** Satisfied Customers



QUESTION 1

Refer to the exhibit.

```
Router 1:

router bgp 65515
no bgp default ipv4-unicast
bgp router-id 192.168.0.1
neighbor 191.168.0.2 remote-as 65515

address-family ipv4
neighbor 191.168.0.2 route-reflector-client

address-family vpnv4
neighbor 191.168.0.2 activate
neighbor 100.1.3.3 send-community extended
```

Router 1 is a route reflector client within a service provider core PE1 cannot see VPNv4 routes received from the ASBR PE1 only has an iBGP relationship with Router 1. Which action resolves this issue?

- A. Activate PE1 as a neighbor under the IPv4 address family.
- B. Configure Router 1 as a route reflector for PE1 under the VPNv4 address family.
- C. Configure PE1 to have an eBGP relationship with Router 1.
- D. Enable BGP default ipv4-unicast

Correct Answer: B

QUESTION 2

Refer to the exhibit.

```
Router 1:

interface loopback0
192.168.10.1 255.255.255.0

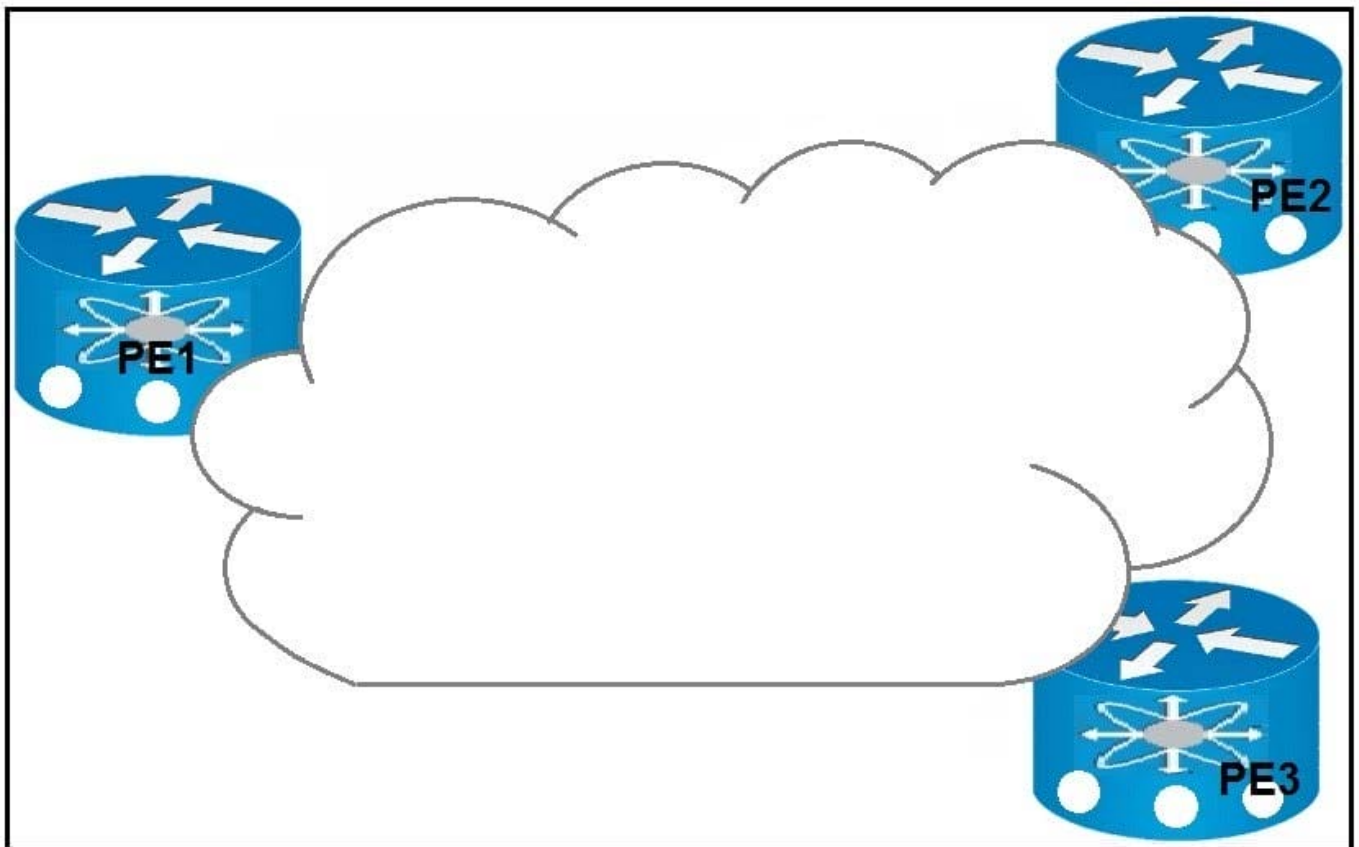
router ospf 1
network 192.168.10.1 0.0.0.0 area 5
```

Refer to the exhibit Router 1 is a P router in the ISP MPLS core A connected P router cannot generate an MPLS label for the router 1 loopback0 interface Which action resolves this issue?

- A. The loopback0 interface must be in OSPF area 0.
- B. The network statement under the routing process must have a wildcard mask of 0 0.0 255.
- C. The OSPF network type must be changed on loopback0 to point-to-point
- D. A static route to null 0 must be added for the loopback interface and then static routes must be redistributed into OSPF

Correct Answer: B

QUESTION 3



Refer to the exhibit. Which result occurs when PE1 learns a new MAC address and all three PEs are enabled with EVPN native?

- A. A system notification is sent to the network administrator that triggers the manual configuration of the new MAC address on PE2 and PE3.
- B. The new MAC address is sent by BGP to PE2 and PE3 as a Type 2 BGP route.
- C. The MAC address is entered into the CAM table and is classified for use on the native VLAN
- D. The MAC address is entered into the CAM table only if it is learned on the native VLAN.

Correct Answer: B

Reference: https://www.cisco.com/c/en/us/td/docs/routers/asr9000/software/asr9k-r6-4/lxvpn/configuration/guide/b-l2vpn-cg-asr9000-64x/b-l2vpn-cg-asr9000-64x_chapter_01011.html

QUESTION 4

Which two statements about MPLS L3 VPN RDs are true? (Choose two.)

- A. They enable EIGRP to use address families to separate traffic between IPv4 and VPNv4.
- B. They are represented as 32-bit values
- C. They are represented as 64-bit values.
- D. They enable OSPF to import and export routes into the global routing table of a router.
- E. They allow BGP to uniquely identify duplicate routes.

Correct Answer: CE

QUESTION 5

How do PE routers exchange CE routes between remote sites?

- A. by converting CE routes into VPNv4 routes and exchanging them using MP-BGP
- B. by establishing BGP neighbor relationships between all connected CEs to exchange routing information
- C. by learning IPv4 routes from connected CEs and redistributing them into the global IGP
- D. by converting CE routes into VPNv4 routes and exchanging them using the global IGP

Correct Answer: A

[300-515 VCE Dumps](#)

[300-515 Practice Test](#)

[300-515 Braindumps](#)