

300-620^{Q&As}

Implementing Cisco Application Centric Infrastructure (DCACI)

Pass Cisco 300-620 Exam with 100% Guarantee

Free Download Real Questions & Answers **PDF** and **VCE** file from:

<https://www.pass2lead.com/300-620.html>

100% Passing Guarantee
100% Money Back Assurance

Following Questions and Answers are all new published by Cisco
Official Exam Center

- ⚙️ **Instant Download** After Purchase
- ⚙️ **100% Money Back** Guarantee
- ⚙️ **365 Days** Free Update
- ⚙️ **800,000+** Satisfied Customers



QUESTION 1

DRAG DROP

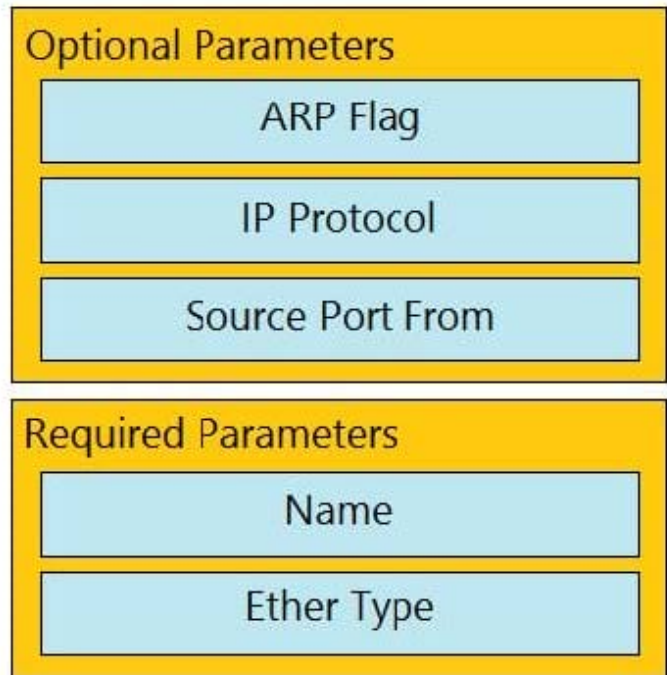
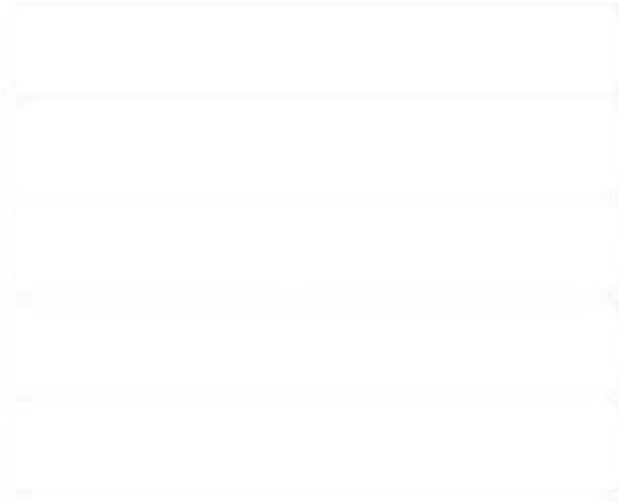
Drag and drop the Cisco ACI filter entry options from the left onto the correct categories on the right indicating what are required or optional parameters.

Select and Place:

Name
ARP Flag
Ether Type
IP Protocol
Source Port From

Optional Parameters
Required Parameters

Correct Answer:

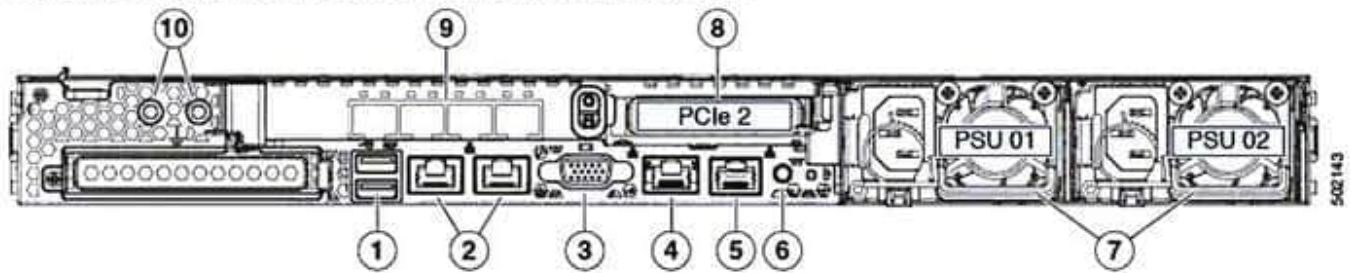


Reference: https://www.cisco.com/c/en/us/td/docs/switches/datacenter/aci/apic/sw/1-x/Operating_ACI/guide/b_Cisco_Operating_ACI/b_Cisco_Operating_ACI_chapter_01000.html

QUESTION 2

Refer to the exhibit.

Figure 2. Connection Features on a Third-Generation APIC Controller



1	USB 3.0 ports (two)
2	Dual 1-Gb/10-Gb Ethernet ports (LAN1 and LAN2) The dual LAN ports can support 1 Gbps and 10 Gbps, depending on the link partner capability.
3	VGA video port (DB-15 connector)
4	1-Gb Ethernet dedicated management port
5	Serial port (RJ-45 connector)
6	Rear unit identification button/LED
7	Power supplies (two, redundant as 1+1)
8	PCIe riser 1/slot 1 (x16 lane)
9	VIC 1455 with external 10/25-Gigabit Ethernet ports (4)
10	Threaded holes for dual-hole grounding lug

<... output omitted ...>

Out-of-band management configuration ...

Enable IPv6 for Out of Band Mgmt Interface? [N]:

Enter the IPv4 address [192.168.10.1/24]: 172.23.142.29/21

Enter the IPv4 address of the default gateway [None]: 172.23.136.1

Enter the interface speed/duplex mode [auto]:

admin user configuration ...

Enable strong passwords? [Y]:

Enter the password for admin: C4SCO376AB984AA9

<... output omitted ...>

A network engineer deploys Cisco APIC for the first time. Which connectivity type must be used to connect a Cisco ACI APIC node to connect to an out-of-band segment?

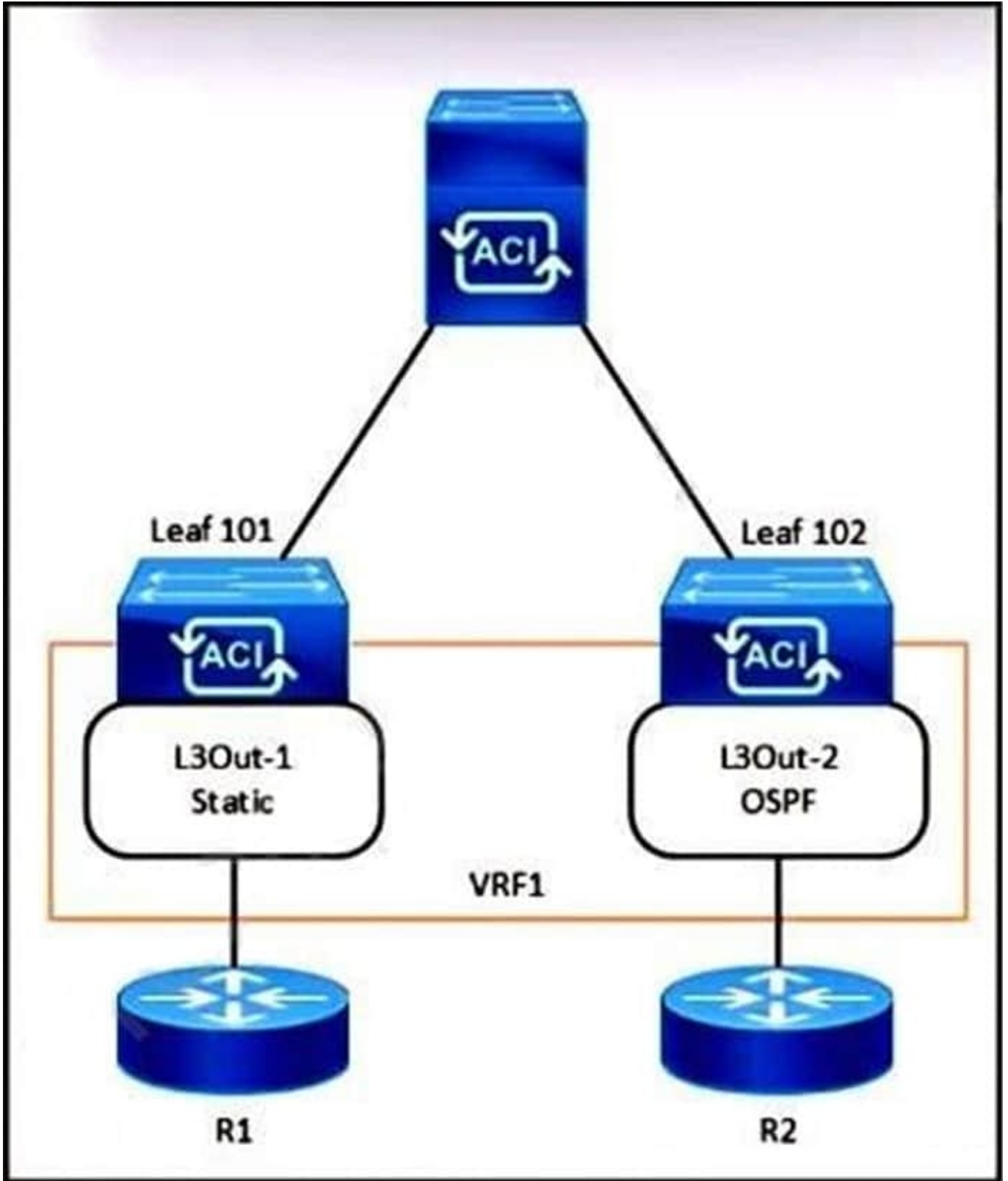
- A. 4. 1-Gb Ethernet dedicated management port
- B. 5. Serial port (RJ-45 connector)
- C. 9. VIC 1455 with external 10/25-Gigabit Ethernet ports
- D. 2. Dual 1-Gb/10-Gb Ethernet ports (LAN1 and LAN2)

Correct Answer: D

Out-of-band 1-Gb/10-Gb Ethernet management ports for management of APIC OS only

QUESTION 3

Refer to the exhibit.



The 0.0.0.0/0 is configured as a default static route on L3Out-1. Which action should be taken for the 0.0.0.0/0 prefix to advertise out on L3Out-2 OSPF?

A. Enable Export Route Control Subnet.

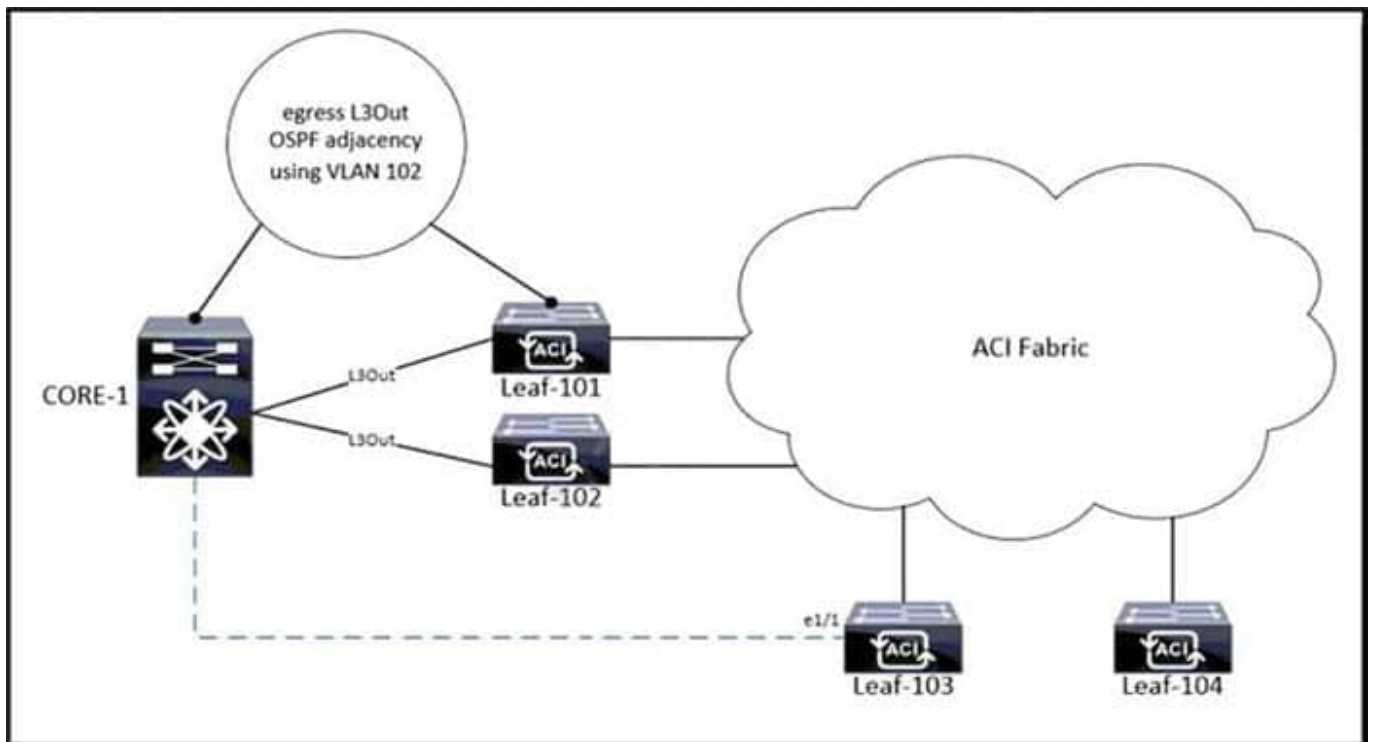
- B. Enable Shared Security Import Subnet.
- C. Enable Shared Route Control Subnet.
- D. Enable Aggregate Export Subnet.

Correct Answer: A

Aggregate Export This option can be used only for 0.0.0.0/0 with “Export Route Control Subnet”. When both “Export Route Control Subnet” and “Aggregate Export” are enabled for 0.0.0.0/0, ACI creates an IP prefix-list with “0.0.0.0/0 le 32”, which matches any subnets. Thus, this option can be used when an L3Out needs to advertise (export) any routes to the outside.

QUESTION 4

Refer to the exhibit.



The Cisco ACI fabric has an egress L3Out from Leaf-101 and Leaf-102 to CORE-1. VLAN 102 is used to form the OSPF adjacency. The workloads must be migrated into EPG-101, and the static port binding is configured to Leaf-103 e1/1 with encap VLAN 101. An engineer completes the port binding and receives an MCP fault. Which action clears the fault?

- A. Use VLAN 101 for OSPF adjacency on the egress L3Out.
- B. Use VLAN 102 as the encap VLAN on the EPG-101 static port binding.
- C. Add VLAN 102 to the VLAN pool that is used by the static port binding.
- D. Prune VLAN 101 from the VLAN pool that is used by the egress L3Out.

Correct Answer: D

QUESTION 5

Which components must be configured for the BGP Route Reflector policy to take effect?

- A. spine fabric interface overrides and profiles
- B. access policies and profiles
- C. pod policy groups and profiles
- D. leaf fabric interface overrides and profiles

Correct Answer: C

<https://www.cisco.com/c/dam/en/us/solutions/collateral/data-center-virtualization/application-centric-infrastructure/aci-guide-configuring-fabric-bgp-route-reflectors.pdf>

[300-620 VCE Dumps](#)

[300-620 Study Guide](#)

[300-620 Braindumps](#)