

300-630^{Q&As}

Implementing Cisco Application Centric Infrastructure - Advanced
(DCACIA)

Pass Cisco 300-630 Exam with 100% Guarantee

Free Download Real Questions & Answers **PDF** and **VCE** file from:

<https://www.pass2lead.com/300-630.html>

100% Passing Guarantee
100% Money Back Assurance

Following Questions and Answers are all new published by Cisco
Official Exam Center

- ⚙️ **Instant Download** After Purchase
- ⚙️ **100% Money Back** Guarantee
- ⚙️ **365 Days** Free Update
- ⚙️ **800,000+** Satisfied Customers



QUESTION 1

What is the advantage of implementing an active-active firewall cluster that is stretched across separate pods when anycast services are configured?

- A. A different MAC/IP combination can be configured for the firewall in each pod.
- B. The local pod anycast node is preferred by the local spines.
- C. A cluster can be deployed in transparent mode across pods.
- D. Local traffic in a pod is load-balanced between the clustered firewalls.

Correct Answer: A

QUESTION 2

DRAG DROP

An engineer deploys a Cisco ACI Multi-Site Orchestrator for the first time. Drag and drop the actions from the left into the steps on the right to add a site and deploy new Cisco ACI objects to the fabric. Not all actions are used.

Select and Place:

Create a template	Step 1
Configure infrastructure	Step 2
Create and associate a tenant	Step 3
Configure multicast routing	Step 4
Define a schema	Step 5
Create a site	

Correct Answer:



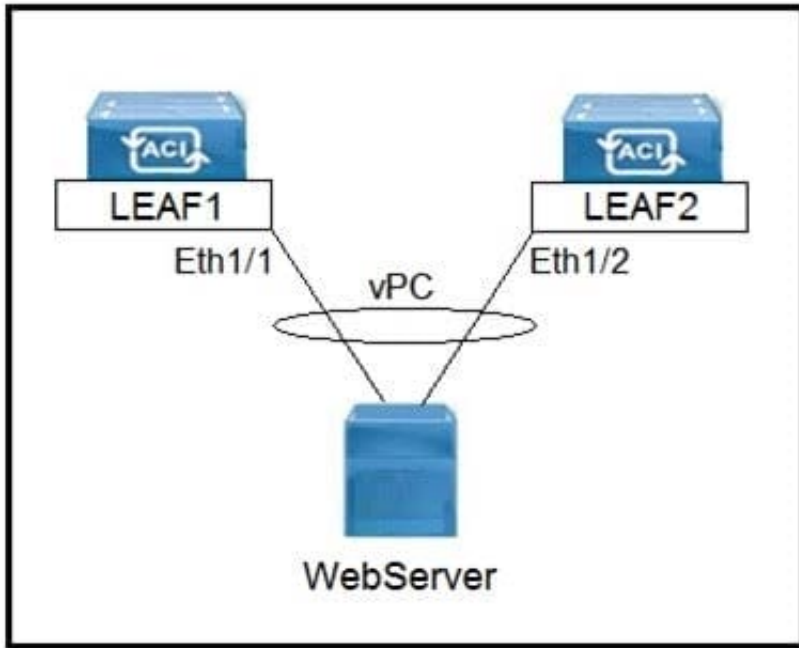
QUESTION 3

Cisco ACI fabric is migrated from network-centric mode to application-centric mode. What is possible in an application-centric design?

- A. remapping of VLAN pools
- B. migration of bare metal servers to virtual machines
- C. creation of additional EPGs under one bridge domain
- D. Cisco ACI VMM integration with hypervisors

Correct Answer: C

QUESTION 4



Refer to the exhibit. Which three actions should be taken to implement the vPC in the Cisco ACI fabric? (Choose three.)

- A. Select a common vPC interface policy group
- B. Select individual interface profiles
- C. Select common interface profiles
- D. Select individual switch profiles
- E. Select common switch profiles

Correct Answer: ABE

QUESTION 5

Which action must be taken to connect two nonsilent servers in active/standby mode to two ACI leaves?

- A. Implement a virtual PortChannel on ACI leaves
- B. Enable ARP flooding for the bridge domain if the MAC address of the active interface changes after NIC failover
- C. Configure ARP flooding for the bridge domain if the MAC address of the active interface stays identical after a NIC failover
- D. Disable dataplane learning to avoid endpoint flapping

Correct Answer: C

Reference: <https://www.cisco.com/c/en/us/td/docs/dcn/whitepapers/cisco-application-centric-infrastructure-design-guide.html>

[300-630 Study Guide](#)

[300-630 Exam Questions](#)

[300-630 Braindumps](#)