

301B^{Q&As}

BIG-IP Local Traffic Manager (LTM) Specialist: Maintain & Troubleshoot

Pass F5 301B Exam with 100% Guarantee

Free Download Real Questions & Answers **PDF** and **VCE** file from:

<https://www.pass2lead.com/301b.html>

100% Passing Guarantee
100% Money Back Assurance

Following Questions and Answers are all new published by F5 Official Exam Center

-  **Instant Download** After Purchase
-  **100% Money Back** Guarantee
-  **365 Days** Free Update
-  **800,000+** Satisfied Customers



QUESTION 1

The LTM Specialist is writing a custom HTTP monitor for a web application and has viewed the content by accessing the site directly via their browser. The monitor continually fails. The monitor configuration is:

```
ltm monitor http /Common/exampleComMonitor { defaults-from /Common/http destination *.* interval 5 recv "Recent Searches" send "GET /app/feed/current?uid=20145 HTTP/1.1\r\nHost: www.example.com\r\nAccept-Encoding: gzip, deflate\r\nConnection: close\r\n\r\n" time-until-up 0 timeout 16 }
```

A trace shows the following request and response:

Request: GET /app/feed/current?uid=20145 HTTP/1.1 Host www.example.com Accept-Encoding gzip, deflate
Connection: close

Response: HTTP/1.1 302 Moved Temporarily Date Wed, 17 Oct 2012 18:45:52 GMT Server Apache Location <https://example.com/login.jsp> Content-Encoding gzip Content-Type text/html;charset=UTF-8 Set-Cookie: JSESSIONID=261EFFBDA8EC3036FBCC22D991AC6835; Path=/app/feed/current?uid=20145 What is the problem?

- A. The request does NOT include a User-Agent header.
- B. The HTTP monitor does NOT support monitoring jsp pages.
- C. The request does NOT include any cookies and the application is expecting a session cookie.
- D. The request includes an Accept-Encoding so the server is responding with a gzipped result and LTM monitors CANNOT handle gzipped responses.

Correct Answer: C

QUESTION 2

An LTM Specialist must perform a packet capture on a virtual server with an applied standard FastL4 profile. The virtual server 10.0.0.1:443 resides on vlan301.

Which steps should the LTM Specialist take to capture the data payload successfully while ensuring no other virtual servers are affected?

- A. The standard FastL4 profile should have PVA acceleration disabled. Then the packet capture `tcpdump -ni vlan301` should be executed on the command line interface.
- B. The packet capture `tcpdump -ni vlan301` should be executed on the command line interface. There is no need to change profiles or PVA acceleration.
- C. A new FastL4 profile should be created and applied to the virtual server with PVA acceleration disabled. Then the packet capture `tcpdump -ni vlan301` should be executed on the command line interface.
- D. The LTM device is under light load. The traffic should be mirrored to a dedicated sniffing device. On the sniffing device, the packet capture `tcpdump -ni vlan301` should be executed.

Correct Answer: C

QUESTION 3

An LTM Specialist is creating a custom EAV monitor.

In which directory should the LTM Specialist upload the script?

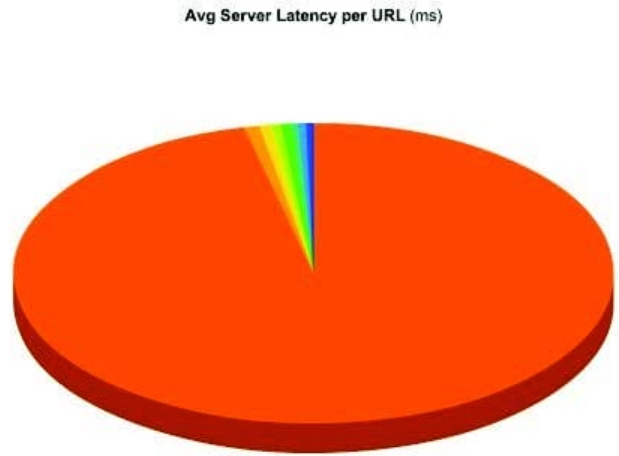
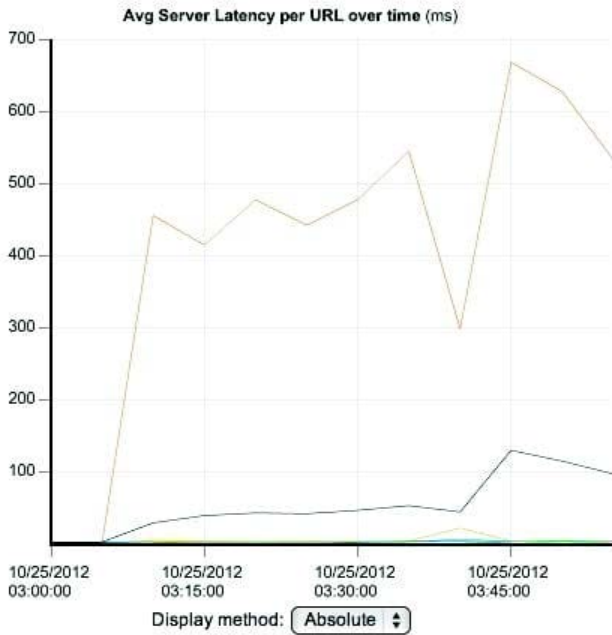
- A. /usr/monitor
- B. /usr/monitors
- C. /config/monitors
- D. /usr/bin/monitors
- E. /config/templates

Correct Answer: C

QUESTION 4

-- Exhibit

View By: Time Period: [Expand Advanced Filters](#) [Export](#)



Measurement to display:

Details

<input checked="" type="checkbox"/>	#	URL	Avg Server Latency (ms)	Max Server Latency (ms)	Transactions
<input checked="" type="checkbox"/>	1	/slow1.php	502.12	1,551.00	459
<input checked="" type="checkbox"/>	2	/page14.cgi	4.33	408.00	506
<input checked="" type="checkbox"/>	3	/env.cgi	3.45	6.00	51
<input checked="" type="checkbox"/>	4	/not-logged-in.php	2.67	4.00	12
<input checked="" type="checkbox"/>	5	/safari.jpg	2.56	213.00	1,247
<input checked="" type="checkbox"/>	6	/slow2.php	2.21	12.00	358
<input checked="" type="checkbox"/>	7	/reflector.php	2.18	6.00	11
<input checked="" type="checkbox"/>	8	/favicon.ico	2.13	49.00	1,740
<input checked="" type="checkbox"/>	9	Total	54.88	1,551.00	4,384
					Total: 8



-- Exhibit -Refer to the exhibits.

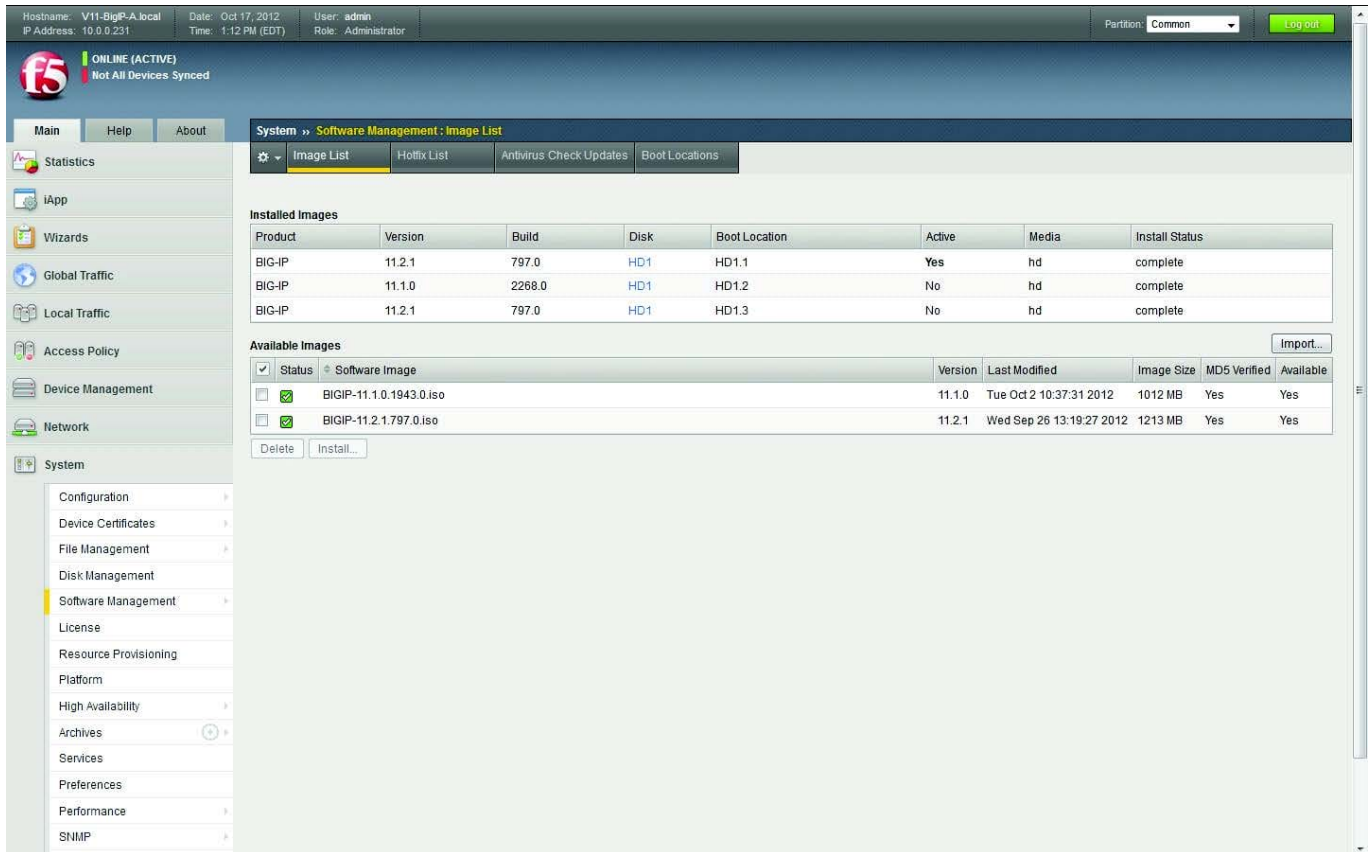
Which URL on which server is causing the highest latency for users?

- A. /slow1.php on 172.16.20.3
- B. /slow2.php on 172.16.20.1
- C. /reflector.php on 172.16.20.2
- D. /Compress.HTML on 172.16.20.1

Correct Answer: A

QUESTION 5

-- Exhibit -- Exhibit -



Refer to the exhibit.

An LTM Specialist has uploaded a qkview to F5 iHealth.

Within the GUI, what is the correct procedure to comply with the recommendation shown in the exhibit?

- A. Obtain product version image from release.f5.com. Overwrite existing image with new product version image. Select product version image and click Install. Select the available disk and volume set name.
- B. Obtain product version image from images.f5.com. Overwrite existing image with new product version image. Select product version image and click Install. Select the available disk and volume set name.
- C. Obtain product version image from downloads.f5.com. Import product version image. Install image onto BIG-IP platform. Select product version image and click Install. Select the available disk and volume set name.
- D. Log a call requesting the product version image via websupport.f5.com Import product version image. Install image onto BIG-IP platform. Select product version image and click Install. Select the available disk and volume set name.

Correct Answer: C

[Latest 301B Dumps](#)

[301B Study Guide](#)

[301B Exam Questions](#)