



350-029^{Q&As}

CCIE Service Provider written

Pass Cisco 350-029 Exam with 100% Guarantee

Free Download Real Questions & Answers **PDF** and **VCE** file from:

<https://www.pass4lead.com/350-029.html>

100% Passing Guarantee
100% Money Back Assurance

Following Questions and Answers are all new published by Cisco
Official Exam Center

-  **Instant Download** After Purchase
-  **100% Money Back** Guarantee
-  **365 Days** Free Update
-  **800,000+** Satisfied Customers





QUESTION 1

GMPLS is based upon:

- A. VPI/VCI-based switching devices
- B. Non-Packet-based devices
- C. Packet-based switching devices
- D. None of the above

Correct Answer: B

The Generalized Multi-Protocol Label Switching (GMPLS)[1] is a protocol suite extending MPLS to manage further classes of interfaces and switching technologies other than packet interfaces and switching, such as time division multiplex,

layer-2 switch, wavelength switch and fiber-switch.

GMPLS is composed of three main protocols:

Resource Reservation Protocol with Traffic Engineering extensions (RSVP-TE) signaling protocol.[5][6] Open Shortest Path First with Traffic Engineering extensions (OSPF-TE) routing protocol.[7][8] Link Management Protocol (LMP).[9]

QUESTION 2

Refer to the exhibit.



```
SLOT 6 (RP/LC 6): 1 Port ISE Packet Over SONET OC-48c/STM-16
Single Mode/SR SC-SC connector
  MAIN: type 77, 800-18817-08 rev A0 dev 0
        HW config: 0x02 SW key: 00-00-00
  PCA: 73-7398-12 rev B0 ver 7
        HW version 1.0 S/N SAD10020ACF
  MBUS: Embedded Agent
        Test hist: 0x00 RMA#: 00-00-00 RMA hist: 0x00
  DIAG: Test count: 0x00000001 Test results: 0x80000000
  FRU: Linecard/Module: OC48X/POS-SR-SC
        Route Memory: MEM-LC-512=
        Packet Memory: MEM-LC1-PKT-512=
  L3 Engine: 3 - ISE OC48 (2.5 Gbps)
  MBUS Agent Software version 4.6 (RAM) (ROM version is 4.6)
  Using CAN Bus A
  ROM Monitor version 17.1
  Fabric Downloader version used 8.0 (ROM version is 8.0)
  Primary clock is CSC0
  Persistent LOS to slot 16
  Persistent LOS to slot 18
  Persistent LOS to slot 19
  Persistent LOS to slot 20
  Board State is BRINGDOWN
  Last Reset Reason: Initial load
  Insertion time: Sun Jun 29 00:00:34 2014 (00:08:45 ago)
  DRAM size: 1073741824 bytes
  FrFab SDRAM size: 268435456 bytes
  ToFab SDRAM size: 268435456 bytes
  0 resets since restart/fault forgive
```

A network engineer installs a Cisco XR 12416 with several modules. One of the modules fails to load Cisco IOS-XR version 3.9.1 and is stuck in the BRINGDOWN state. Which issue is the source of the problem?

- A. insufficient route memory to boot the blade
- B. insufficient packet memory to boot the blade
- C. insufficient DRAM to boot the blade
- D. blade in the incorrect slot

Correct Answer: A

QUESTION 3

Which two statements about VPLS are true? (Choose two.)

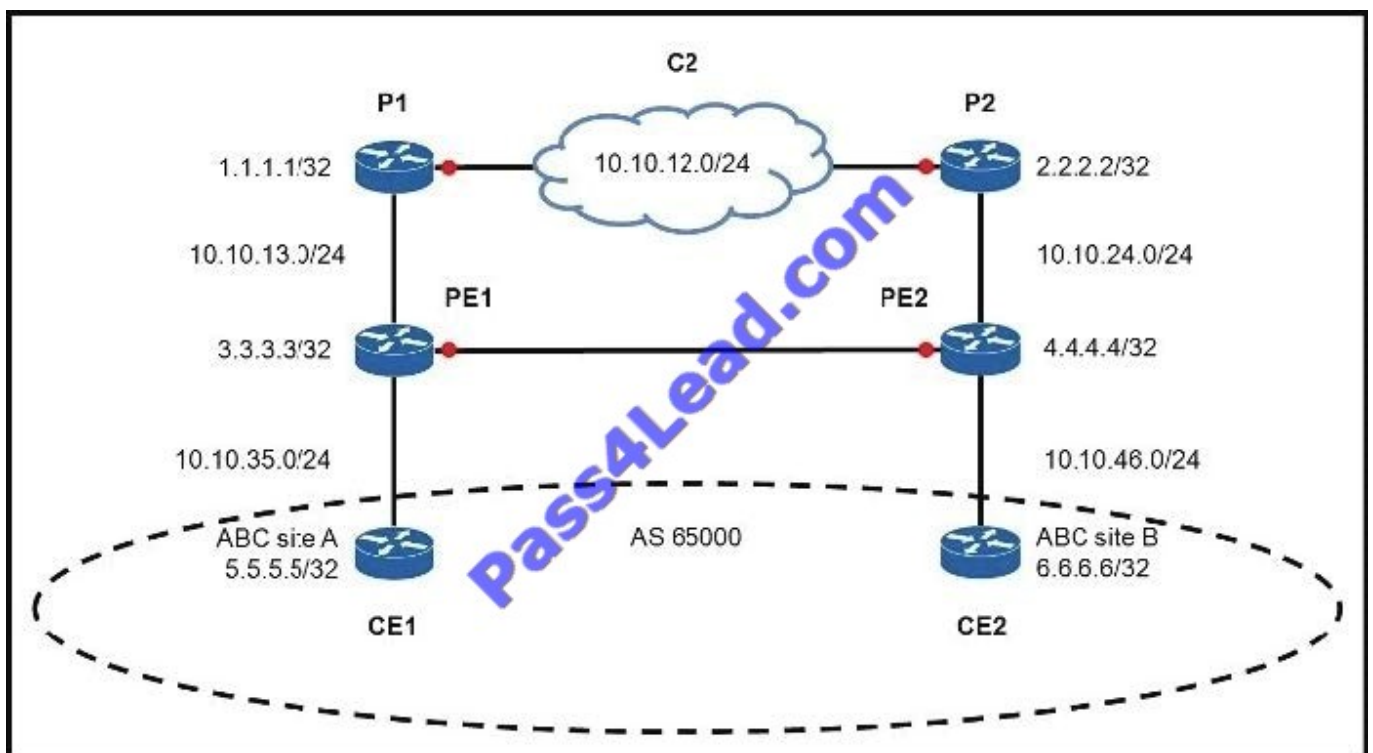


- A. There is a full mesh of pseudo wires.
- B. There is a partial mesh of pseudo wires.
- C. Only L2TPv3 can be used for pseudo wire establishment.
- D. There is split-horizon to avoid loops.

Correct Answer: AD

QUESTION 4

Refer to the exhibit.



An engineer is looking the CE1 routing table for CE2 Loopback 0. Each CE runs OSPF with its PE.

Which statement describes why the CE2 Loopback address is installed as an external OSPF route at the CE1 routing table?

- A. PE1 and PE2 have mutual redistribution between OSPF and BGP.
- B. CE1 is configured under OSPF with the command redistribute connected.
- C. CE1 and CE2 are in different areas.
- D. CE1 and CE2 have different OSPF processes.
- E. PE1 and PE2 have different OSPF VRF processes.

Correct Answer: E



QUESTION 5

What bit should be set in the link state PDUs in an IS-IS level-1-2 router to indicate that they are a potential exit point out of the area?

- A. ATT (Attached) bit
- B. ABR (Area Border Rorter) bit
- C. PN (Pseudonode) bit
- D. P (Partition) bit
- E. Down bit
- F. IS-Type bit

Correct Answer: A

[350-029 VCE Dumps](#)

[350-029 Study Guide](#)

[350-029 Exam Questions](#)



To Read the [Whole Q&As](#), please purchase the [Complete Version](#) from [Our website](#).

Try our product !

100% Guaranteed Success

100% Money Back Guarantee

365 Days Free Update

Instant Download After Purchase

24x7 Customer Support

Average 99.9% Success Rate

More than 800,000 Satisfied Customers Worldwide

Multi-Platform capabilities - [Windows](#), [Mac](#), [Android](#), [iPhone](#), [iPod](#), [iPad](#), [Kindle](#)

We provide exam PDF and VCE of Cisco, Microsoft, IBM, CompTIA, Oracle and other IT Certifications. You can view Vendor list of All Certification Exams offered:

<https://www.pass4lead.com/allproducts>

Need Help

Please provide as much detail as possible so we can best assist you.

To update a previously submitted ticket:



 <p>One Year Free Update Free update is available within One Year after your purchase. After One Year, you will get 50% discounts for updating. And we are proud to boast a 24/7 efficient Customer Support system via Email.</p>	 <p>Money Back Guarantee To ensure that you are spending on quality products, we provide 100% money back guarantee for 30 days from the date of purchase.</p>	 <p>Security & Privacy We respect customer privacy. We use McAfee's security service to provide you with utmost security for your personal information & peace of mind.</p>
---	---	--

Any charges made through this site will appear as Global Simulators Limited.

All trademarks are the property of their respective owners.

Copyright © pass4lead, All Rights Reserved.