

350-401^{Q&As}

Implementing and Operating Cisco Enterprise Network Core Technologies (ENCOR) & CCIE Enterprise Infrastructure & CCIE Enterprise Wireless

Pass Cisco 350-401 Exam with 100% Guarantee

Free Download Real Questions & Answers **PDF** and **VCE** file from:

<https://www.pass2lead.com/350-401.html>

100% Passing Guarantee
100% Money Back Assurance

Following Questions and Answers are all new published by Cisco Official Exam Center

- ⚙️ **Instant Download** After Purchase
- ⚙️ **100% Money Back** Guarantee
- ⚙️ **365 Days** Free Update
- ⚙️ **800,000+** Satisfied Customers



QUESTION 1

What is an advantage of using BFD?

- A. It local link failure at layer 1 and updates routing table
- B. It detects local link failure at layer 3 and updates routing protocols
- C. It has sub-second failure detection for layer 1 and layer 3 problems.
- D. It has sub-second failure detection for layer 1 and layer 2 problems.

Correct Answer: B

BFD provides a low-overhead, short-duration method of detecting failures in the forwarding path between two adjacent routers, including the interfaces, data links, and forwarding planes. BFD is a detection protocol that you enable at the interface and routing protocol levels

QUESTION 2

Which design principle states that a user has no access by default to any resource, and unless a resource is explicitly granted, it should be denied?

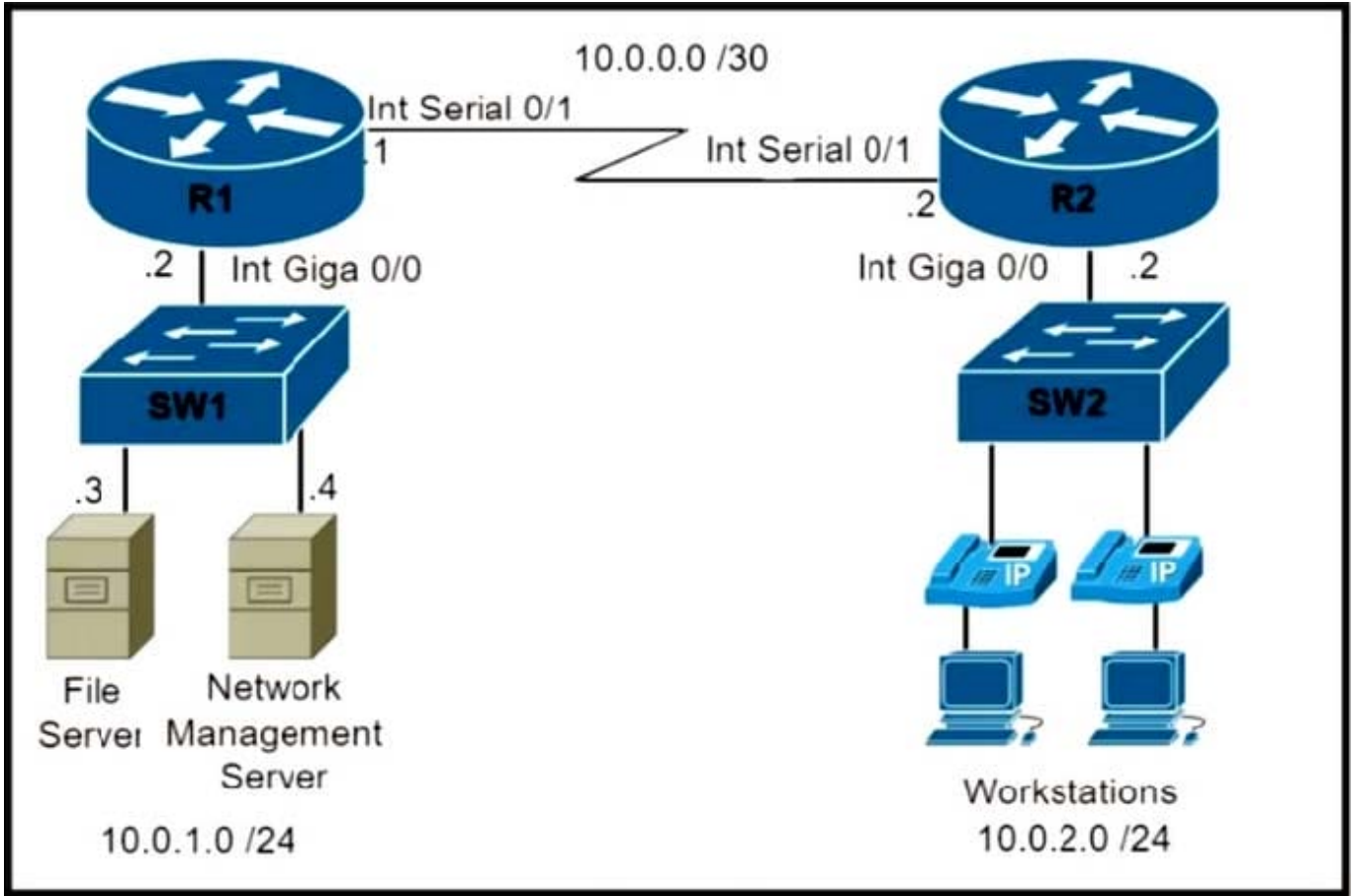
- A. least privilege
- B. fail-safe defaults
- C. economy of mechanism
- D. complete mediation

Correct Answer: B

The Principle of Fail-Safe Defaults states that, unless a subject is given explicit access to an object, it should be denied access to that object

QUESTION 3

An engineer must configure and validate a CoPP policy that allows the network management server to monitor router R1 via SNMP while protecting the control plane. Which two commands or command sets must be used? (Choose two.)



A. `access-list 150 permit udp 10.0.1.4 0.0.0.0 host 10.0.1.2 eq snmp`
`access-list 150 permit udp 10.0.1.4 0.0.0.0 eq snmp host 10.0.1.2`

`class-map match-all CoPP-management`

`match access-group 150`

`policy-map CoPP-policy class CoPP-management police 8000 conform-action transmit exceed-action transmit violate-action drop`

`control-plane`

`Service-policy input CoPP-policy`

B. `show ip interface brief`

C. `show quality-of-service-profile`

D. `access-list 150 permit udp 10.0.1.4 0.0.0.0 host 10.0.1.2 eq snmp`

`class-map match-all CoPP-management`

`match access-group 150`

`policy-map CoPP-policy`

`class CoPP-management`

police 8000 conform-action transmit exceed-action transmit

violate-action transmit

control-plane

Service-policy input CoPP-policy

E. show policy-map control-plane

Correct Answer: AE

QUESTION 4

An engineer is connected to a Cisco router through a Telnet session. Which command must be issued to view the logging messages from the current session as soon as they are generated by the router?

A. logging buffer

B. service timestamps log uptime

C. logging host

D. terminal monitor

Correct Answer: D

QUESTION 5

Where is radio resource management performed in a cisco SD-access wireless solution?

A. DNA Center

B. control plane node

C. wireless controller

D. Cisco CMX

Correct Answer: C

Fabric wireless controllers manage and control the fabric-mode APs using the same general model as the traditional local-mode controllers which offers the same operational advantages such as mobility control and radio resource management. A significant difference is that client traffic from wireless endpoints is not tunneled from the APs to the wireless controller. Instead, communication from wireless clients is encapsulated in VXLAN by the fabric APs which build a tunnel to their first-hop fabric edge node. Wireless traffic is tunneled to the edge nodes as the edge nodes provide fabric services such as the Layer 3 Anycast Gateway, policy, and traffic enforcement.

<https://www.cisco.com/c/en/us/td/docs/solutions/CVD/Campus/cisco-sda-design-guide.html>

[350-401 VCE Dumps](#)

[350-401 Practice Test](#)

[350-401 Braindumps](#)