

350-401^{Q&As}

Implementing and Operating Cisco Enterprise Network Core Technologies (ENCOR) & CCIE Enterprise Infrastructure & CCIE Enterprise Wireless

Pass Cisco 350-401 Exam with 100% Guarantee

Free Download Real Questions & Answers **PDF** and **VCE** file from:

<https://www.pass2lead.com/350-401.html>

100% Passing Guarantee
100% Money Back Assurance

Following Questions and Answers are all new published by Cisco Official Exam Center

- ⚙️ **Instant Download** After Purchase
- ⚙️ **100% Money Back** Guarantee
- ⚙️ **365 Days** Free Update
- ⚙️ **800,000+** Satisfied Customers



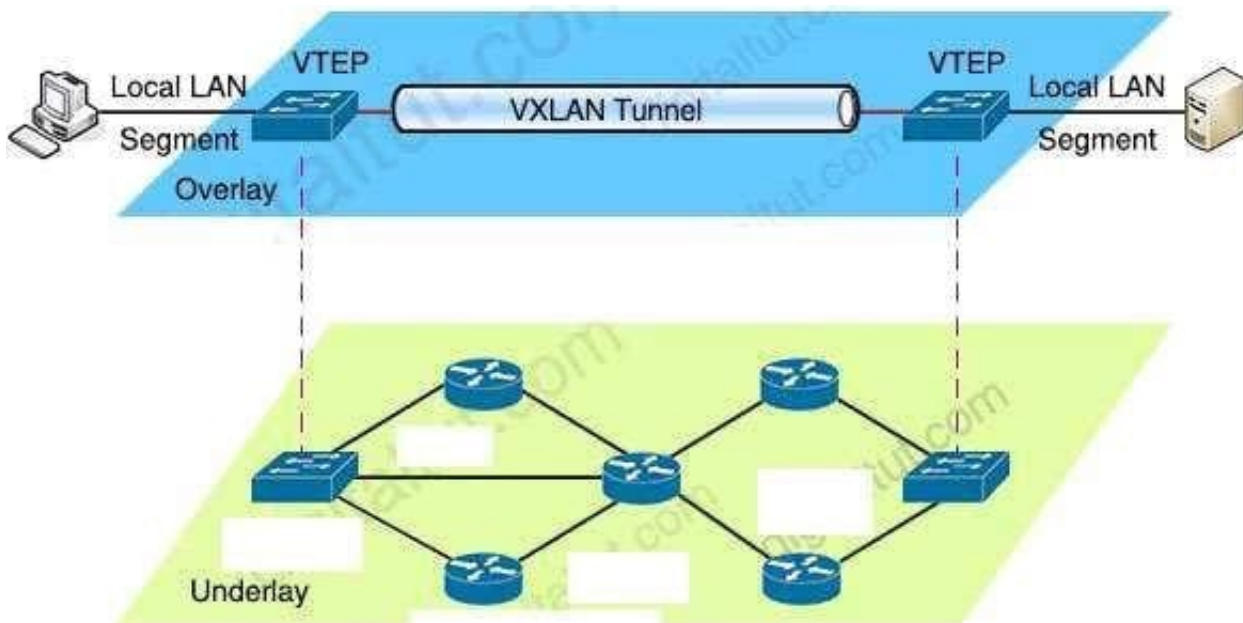
QUESTION 1

Which action is a function of VTEP in VXLAN?

- A. tunneling traffic from IPv6 to IPv4 VXLANs
- B. allowing encrypted communication on the local VXLAN Ethernet segment
- C. encapsulating and de-encapsulating VXLAN Ethernet frames
- D. tunneling traffic from IPv4 to IPv6 VXLANs

Correct Answer: C

VTEPs connect between Overlay and Underlay network and they are responsible for encapsulating frame into VXLAN packets to send across IP network (Underlay) then decapsulating when the packets leaves the VXLAN tunnel.



QUESTION 2

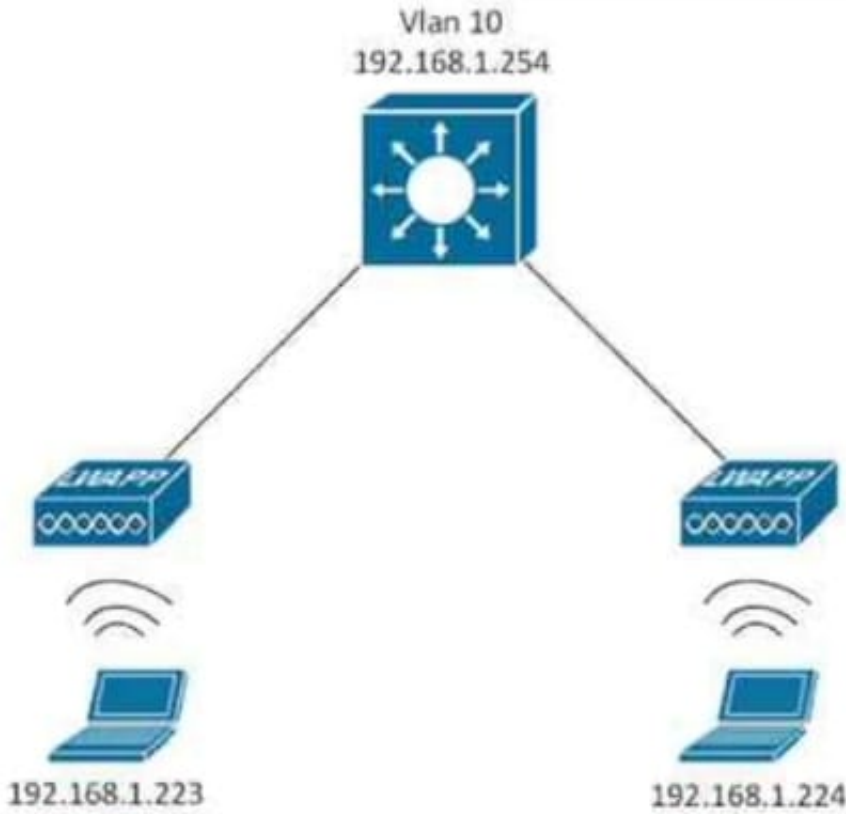
Which mechanism can be used to enforce network access authentication against an AAA server if the endpoint does not support the 802.1X supplicant functionality?

- A. private VLANs
- B. port security
- C. MAC Authentication Bypass
- D. MACsec

Correct Answer: C

QUESTION 3

Refer to the exhibit.



```
> ping 192.168.1.224

Pinging 192.168.1.224 with 32 bytes of data:
Reply from 192.168.1.223: Destination host unreachable.
Reply from 192.168.1.223: Destination host unreachable.
Reply from 192.168.1.223: Destination host unreachable.

Ping statistics for 192.168.1.224:
    Packets: Sent = 3, Received = 3, Lost = 0 (0% loss),
> ping 192.168.1.254

Pinging 192.168.1.254 with 32 bytes of data:
Reply from 192.168.1.254: bytes=32 time=4ms TTL=64
Reply from 192.168.1.254: bytes=32 time=6ms TTL=64
Reply from 192.168.1.254: bytes=32 time=5ms TTL=64

Ping statistics for 192.168.1.254:
    Packets: Sent = 3, Received = 3, Lost = 0 (0% loss),
```

An SSID is configured and both clients can reach their gateways on the Layer 3 switch, but they cannot communicate with each other. Which action resolves this issue?

- A. Set the WMM Policy to Allowed
- B. Set the P2P Blocking Action to Disabled
- C. Set the WMM Policy to Required
- D. Set the P2P Blocking Action to Forward-UpStream

Correct Answer: B

QUESTION 4

An engineer modifies the existing ISE guest portal URL to use a static FQDN. Users immediately report that they receive certificate errors when they are redirected to the new page. Which two additional configuration steps are needed to implement the change? (Choose two.)

- A. Add a new DNS record to resolve the FQDN to the PSN IP address
- B. Create and sign a new CSR that contains the static FQDN entry
- C. Manually configure the hosts file on each user device.
- D. Disable HTTPS on the WLC under the Management menu
- E. Add the FQDN entry under the WLC virtual interface

Correct Answer: AB

QUESTION 5

What is the benefit of using TCAM for IP forwarding decisions versus using the CAM table?

- A. TCAM finds results based on binary, and CAM uses the longest match to find results
- B. TCAM processes lookups in a hardware CPU, and CAM relies on binary masks to find results.
- C. TCAM finds results based on masks, and CAM finds results basing on exact match.
- D. TCAM uses low cost hardware memory to store addresses, and CAM uses expensive hardware memory.

Correct Answer: B

The problem with CAM is that it can only do exact matches on ones and zeros (binary CAMs) <https://community.cisco.com/t5/networking-knowledge-base/cam-content-addressable-memory-vs-tcam-ternary-content/ta-p/3107938> By implementing router prefix lookup in TCAM, we are moving process of Forwarding Information Base lookup from software to hardware. <https://howdoesinternetwork.com/2015/tcam-memory>

[Latest 350-401 Dumps](#)

[350-401 PDF Dumps](#)

[350-401 Braindumps](#)