

350-501 Q&As

Implementing and Operating Cisco Service Provider Network Core Technologies (SPCOR)

Pass Cisco 350-501 Exam with 100% Guarantee

Free Download Real Questions & Answers **PDF** and **VCE** file from:

<https://www.pass2lead.com/350-501.html>

100% Passing Guarantee
100% Money Back Assurance

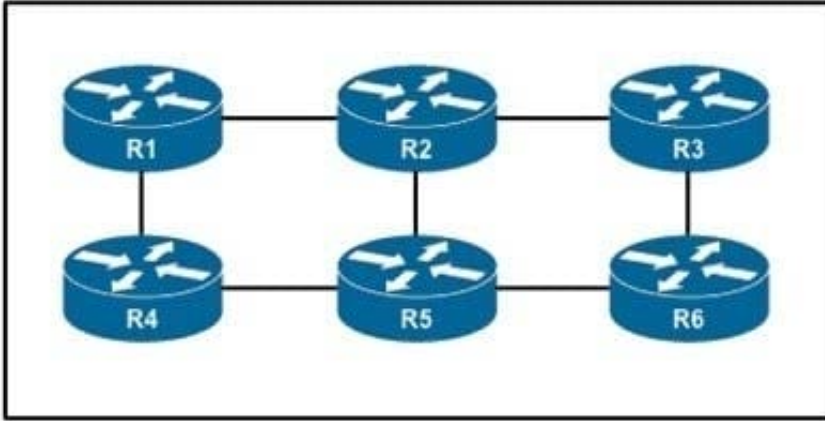
Following Questions and Answers are all new published by Cisco
Official Exam Center

- ⚙️ **Instant Download** After Purchase
- ⚙️ **100% Money Back** Guarantee
- ⚙️ **365 Days** Free Update
- ⚙️ **800,000+** Satisfied Customers



QUESTION 1

Refer to the exhibit.



An engineer is configuring an administrative domain in the given multi-vendor environment with PIM-SM. Which feature must the engineer implement so that devices will dynamically learn the RP?

- A. Auto-RP
- B. BIDIR-PIM
- C. SSM
- D. BSR

Correct Answer: D

QUESTION 2

Refer to the exhibit.

```
telemetry model-driven
sensor-group cisco
sensor-path Cisco-IOS-XR-infra-statsd-oper:infra-statistics/interfaces/interface/latest/generic-counters
commit
```

This configuration is being applied on an IOS XR route.

Which statement about this configuration is true?

- A. It is used to create a sensor-group and has a list of YANG models for streaming.
- B. It is used to create a subscription to specify the streaming interval.
- C. It is used to identify MIB entries and has a list of YANG models.

D. It is used to identify traps for SNMP polling.

Correct Answer: A

Reference; https://www.cisco.com/c/en/us/td/docs/routers/ncs6000/software/telemetry/b-telemetry-cg-ncs6000-62x/b-telemetry-cg-ncs6000-62x_chapter_010.pdf

QUESTION 3

Which action does the ingress VTEP perform on traffic between EVPN VXLAN overlays?

- A. routing and tunneling when doing symmetric IRB
- B. routing when doing asymmetric IRB
- C. routing and bridging when doing asymmetric IRB
- D. bridging when doing symmetric IRB

Correct Answer: C

<https://www.cisco.com/c/en/us/products/collateral/switches/nexus-9000-series-switches/guide-c07-734107.html>

QUESTION 4

Refer to the exhibit.

Router 1: router isis net 49.0011.0000.0000.0001.00

Router2: net 49.0001.0000.0000.0001.00

Router3: router isis net49.0011.0000.0000.0002.00

Router 4 is added to the network and must be in the same area as router 1. Which NET should the engineer assign?

- A. 49.0001.0000.0000.0004.00
- B. 49.0111.0000.0000.0001.00
- C. 49.0011.0000.0000.0003.00
- D. 49.0011.0000.0000.0002.00

Correct Answer: C

QUESTION 5

```
Notification host: 192.168.101.1  udp-port: 162  type: trap  
user: community1  security model: v1
```

Refer to the exhibit. Over the last few months, ISP A has doubled its user base. The IT Director asked the engineering team to monitor memory consumption and buffer statistics on all P and PE devices in the MPLS core. Most devices have CPU usage of 70% or more, so the solution must be targeted and secure. Which two commands must the engineering team implement on P and PE devices to meet these requirements? (Choose two.)

- A. snmp-server enable traps memory bufferpeak
- B. snmp-server host 192.168.101.1 version 1 community1 auth memory
- C. snmp-server enable snmp-traps community1 bufferpeak
- D. snmp-server host 192.168.101.1 version 2c community1 memory
- E. snmp-server host 192.168.101.1 version 3 auth community1 memory

Correct Answer: AB

[Latest 350-501 Dumps](#)

[350-501 Exam Questions](#)

[350-501 Braindumps](#)