

352-011^{Q&As}

Cisco Certified Design Expert Practical

Pass Cisco 352-011 Exam with 100% Guarantee

Free Download Real Questions & Answers **PDF** and **VCE** file from:

<https://www.pass2lead.com/352-011.html>

100% Passing Guarantee
100% Money Back Assurance

Following Questions and Answers are all new published by Cisco
Official Exam Center

-  **Instant Download** After Purchase
-  **100% Money Back** Guarantee
-  **365 Days** Free Update
-  **800,000+** Satisfied Customers



QUESTION 1

Which two options are design considerations when introducing FCoE into an existing network? (Choose two)

- A. The FCoE QoS markings may overlap with call signaling QoS markings
- B. Optical cabling is needed to transmit FCoE traffic between a server and its directly connected Ethernet switch
- C. The existing network must support a MTU of 3280 bytes
- D. Twinaxial cabling can be used to transmit FCoE traffic between a server and its directly connected Ethernet switch, if it is less than 10 meters
- E. All the servers in the data center must be retrofitted with converged Network Adapters

Correct Answer: AE

QUESTION 2

You are presented with requirements to design a development, testing and production environments. These environment should communicate with each other, yet they should be kept as separate failure domains. Which routing protocol should be configured on the links between the networks to support the design requirements?

- A. OSPF
- B. EIGRP
- C. IS-IS
- D. BGP

Correct Answer: D

QUESTION 3

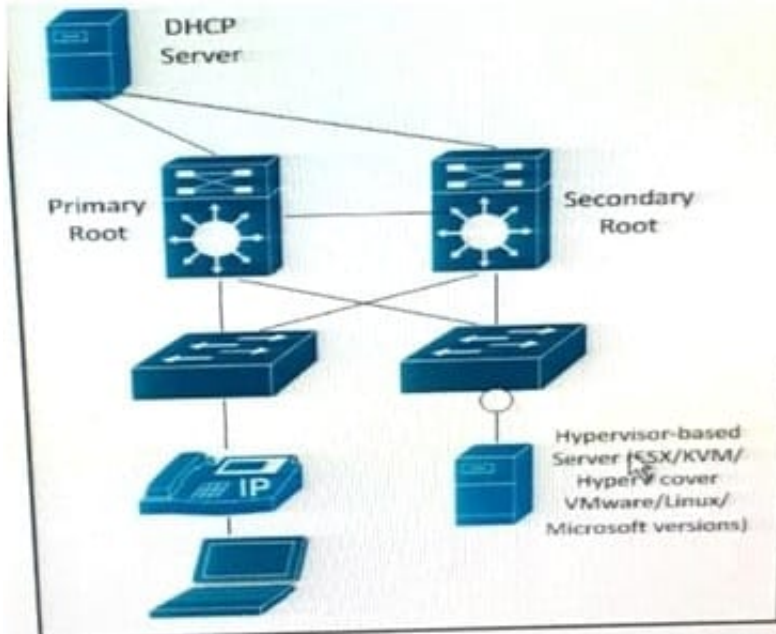
Which three processes are part of the ITILv3 Service Operation? (Choose three)

- A. Release and deployment management
- B. Problem management
- C. Incident management
- D. Event management
- E. Service-level management
- F. Change management

Correct Answer: BCD

QUESTION 4

Refer to the Exhibit.



The server is running multiple VLANs on its NIC. Which two Layer 2 features should be applied to the network location identified by a circle? (Choose two)

- A. UDLD
- B. BPDU guard
- C. BPDU filtering
- D. Port Fast
- E. Loop guard
- F. PortFast trunk

Correct Answer: BF

QUESTION 5

What are two possible drawbacks of ending Loop-Free Alternate to support fast convergence for most destination IGP prefixes? (Choose two)

- A. The IGP topology might need to be adjust
- B. Loop-free alternate's convergence in less than 100 milliseconds is not possible
- C. Loop-free alternate's are supported only for prefixes that are considered external tot the IGP

D. Loop-free alternates are not supported in global VPN VRF OSPF instances

E. Additional path computations are needed

Correct Answer: AE

[Latest 352-011 Dumps](#)

[352-011 Study Guide](#)

[352-011 Exam Questions](#)