

3V0-732^{Q&As}

VMware Certified Advanced Professional 7 - Cloud Management and Automation Design Exam

Pass VMware 3V0-732 Exam with 100% Guarantee

Free Download Real Questions & Answers **PDF** and **VCE** file from:

<https://www.pass2lead.com/3v0-732.html>

100% Passing Guarantee
100% Money Back Assurance

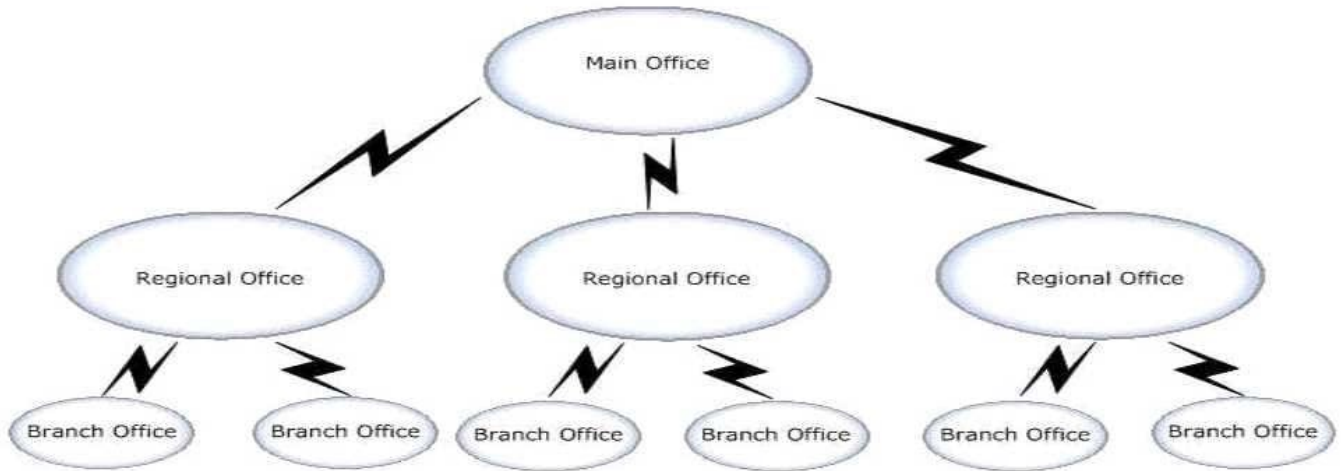
Following Questions and Answers are all new published by VMware Official Exam Center

- ⚙️ **Instant Download** After Purchase
- ⚙️ **100% Money Back** Guarantee
- ⚙️ **365 Days** Free Update
- ⚙️ **800,000+** Satisfied Customers



QUESTION 1

A company has a main office, three regional offices, and six branches offices. The network links are configured as shown in the exhibit. View the Exhibit:



During information gathering, an architect records: The regional offices are located in secure bunkers. The CTO feels this would be a good location for all the vRealize Automation components to meet their BC/DR objectives. However, the CTO is looking for the best design while maintaining their very high security requirements. The branch offices are located in very remote locations with unpredictable network performance. Reliance on the main and regional offices needs to be minimal while still allowing provisioning of machines in the branch offices. The branch offices consist of three host vSphere clusters. There is synchronous vSphere Metro Storage Cluster (vMSC) between the regional offices as well as replicated backups between the regional offices with replication running nightly. The CEO wants to have the lowest possible RPO and RTO of the vRealize portal including the ability to manage already provisioned machines while NOT increasing the amount of data being replicated between the regional offices as much as possible. Referring to the exhibit, which two design specifications can the architect recommend to meet requirements? (Choose two.)

- A. distributed vRealize Automation management solution in the main office
- B. vSphere agents in each of the branch offices
- C. distributed vRealize Automation management solution in each of the regional offices
- D. distributed vRealize Automation management solution across the regional offices
- E. vSphere agents in the regional offices that manage the regional and branch offices

Correct Answer: DE

QUESTION 2

A cloud architect is tasked with designing a solution for guest virtual machine backup system integration for an organization's vRealize Automation (vRA) private cloud. During requirements gathering, the backup system vendor confirmed that REST API methods are available for the following:

- 1.

Install and configure backup agent

2.

Initiate incremental backup

3.

Initiate full system backup

4.

Uninstall backup agent and remove number of nodes from license node count

5.

Only authorized users should initiate full system backups

Which design solution addresses this scenario?

- A. Execute backup system REST APIs using vRA custom properties.
- B. Execute backup system REST APIs using vRA software components.
- C. Execute backup system REST APIs using vRealize Orchestrator workflows at appropriate vRA lifecycle state/event.
- D. Execute backup system REST APIs using a third-party configuration management solution.

Correct Answer: C

QUESTION 3

A company is currently reviewing all of its security roles and permissions due to a compliance audit.

It needs to specify which roles are tenant-specific and which are system-wide.

Which two roles are system-wide? (Choose two.)

- A. Services architect
- B. Approval administrator
- C. IaaS administrator
- D. Fabric administrator
- E. Application architect
- F. System administrator

Correct Answer: CF

Reference: <https://docs.vmware.com/en/vRealize-Automation/7.3/com.vmware.vrA.prepare.use.doc/GUID-8A19697C-AECA-4E19-9E46-765898C0D153.html>

QUESTION 4

An architect has been tasked with creating a backup design for a vRealize Automation deployment. As part of the engagement there is a requirement to document justification to perform a backup.

What are two reasons to perform a full backup of vRealize Automation deployment components? (Choose two.)

- A. To prepare for scaling of any of the system components.
- B. To prepare for patching of any of the system components.
- C. To prepare for replacing certificates.
- D. To prepare for upgrades of any of the system components.

Correct Answer: CD

QUESTION 5

An IaaS Administrator has been tasked with organizing virtualization compute resources and cloud endpoints into fabric groups by type and intent. One or more fabric administrators will manage the resources in each fabric group. Which are three considerations to take into account when designing the fabric groups? (Choose three.)

- A. Fabric administrators are responsible for creating reservations on the compute resources in their fabric groups to allocate fabric to specific business groups.
- B. Fabric administrators monitor the resource use for their group(s) and often are approvers for catalog requests.
- C. Fabric administrators may submit requests on behalf of other users. These users could be a member of more than one group and have different roles in different groups.
- D. The IaaS administrator must grant the role of fabric administrator to the appropriate users.
- E. Fabric groups will be created in a specific tenant, but their resources could be made available to users who belong to business groups in all tenants.

Correct Answer: ADE

Reference: <https://pubs.vmware.com/VCAC-61/index.jsp?topic=%2Fcom.vmware.vcac.concepts.doc%2FGUID-CC81881E-8DE0-4A09-ABC2-2B34240E5686.html>

[3V0-732 PDF Dumps](#)

[3V0-732 VCE Dumps](#)

[3V0-732 Braindumps](#)