

4A0-102^{Q&As}

Alcatel-Lucent Border Gateway Protocol

Pass Alcatel-Lucent 4A0-102 Exam with 100% Guarantee

Free Download Real Questions & Answers **PDF** and **VCE** file from:

<https://www.pass2lead.com/4a0-102.html>

100% Passing Guarantee
100% Money Back Assurance

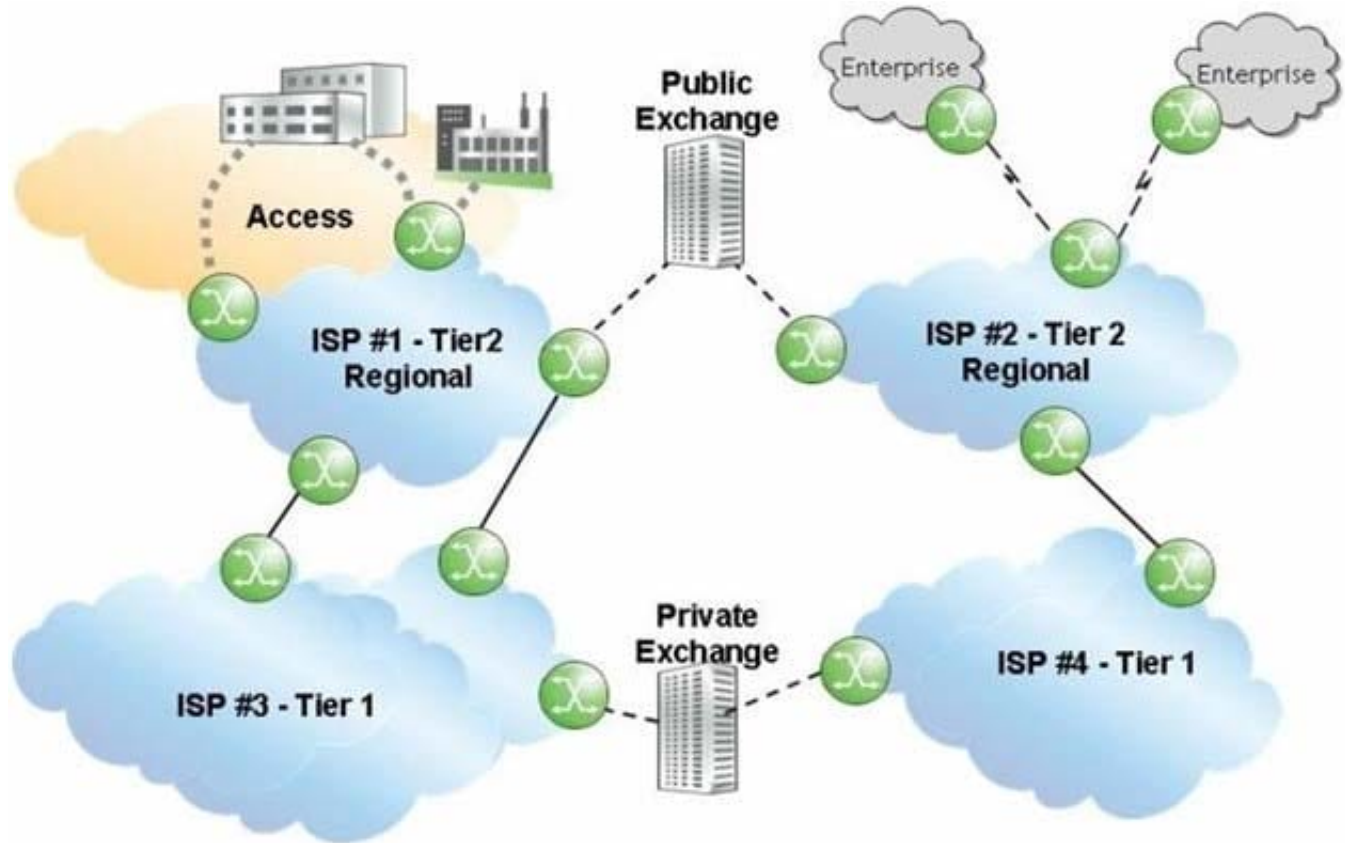
Following Questions and Answers are all new published by Alcatel-Lucent Official Exam Center

- ⚙️ **Instant Download** After Purchase
- ⚙️ **100% Money Back** Guarantee
- ⚙️ **365 Days** Free Update
- ⚙️ **800,000+** Satisfied Customers



QUESTION 1

Click the exhibit.



Given that ISP 1 and ISP 2 are Tier 2 providers, and that ISP 3 and ISP 4 are Tier 1 providers, what is the most likely relationship between ISP 1 and the other ISPs?

- A. ISP 1 has a peering relationship with ISP 2 and ISP 4.
- B. ISP 1 has a peering relationship with ISP 2 and a transit relationship with ISP 3.
- C. ISP 1 has a peering relationship with ISP 2 and ISP 3.
- D. ISP 1 has a transit relationship with ISP 2 and ISP 4.
- E. ISP 1 has a transit relationship with ISP 2 and a peering relationship with ISP 3.

Correct Answer: B

QUESTION 2

Which of the following statements regarding route reflectors is TRUE?

- A. Route reflectors propagate BGP learned routes to their clients.

- B. Route reflectors require "n" iBGP sessions, where "n" is the number of BGP routers in the AS.
- C. Route reflectors disable iBGP split horizon for all iBGP peers in the AS.
- D. Route reflectors do not work in conjunction with confederations.

Correct Answer: A

QUESTION 3

Which of the following statements regarding BGP Fast Reroute is FALSE?

- A. BGP Fast Reroute is triggered by IGP events.
- B. The backup path is pre-computed and installed in the FIB.
- C. BGP Fast Reroute is independent of number of affected prefixes.
- D. BGP Fast Reroute uses the optimal path to the destination.

Correct Answer: D

QUESTION 4

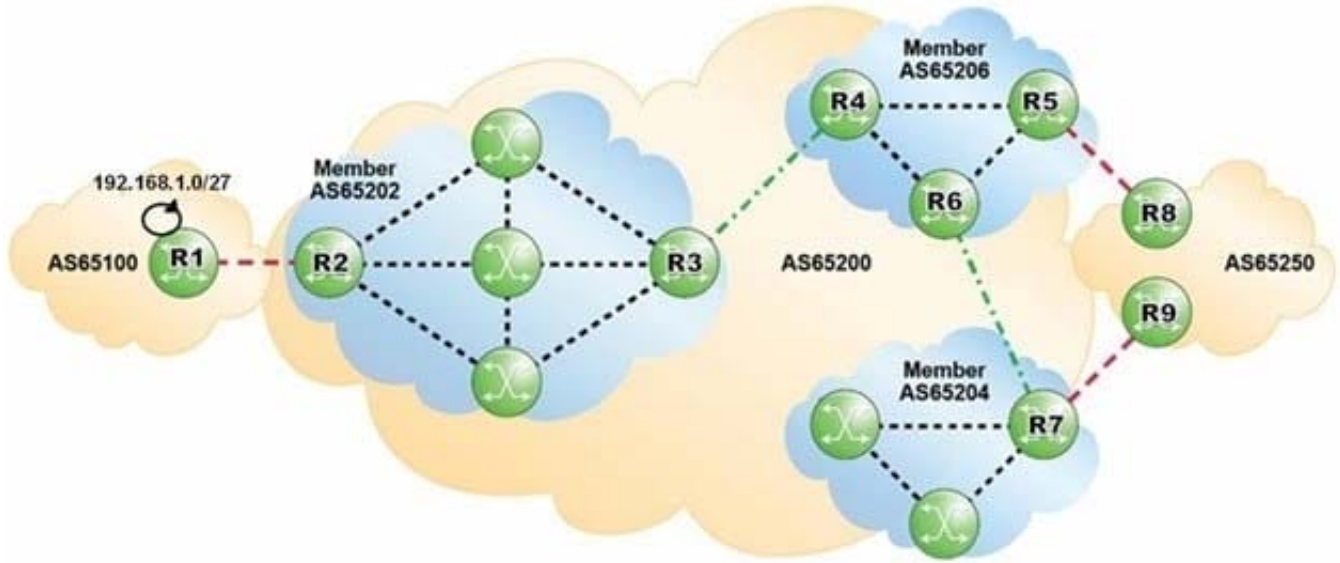
Which of the following regarding route reflectors is TRUE?

- A. Only the route reflector is configured with a cluster id.
- B. There can only be one route reflector in a cluster.
- C. Clients should have iBGP sessions with each other to maintain the mesh.
- D. There can only be one level of route reflectors in the topology.

Correct Answer: A

QUESTION 5

Click the exhibit.



AS 65100 is advertising 192.168.1.0/27 into BGP. Which of the following AS Paths would the prefix 192.168.1.0/27 contain when viewed on router R8?

- A. 65200 (65206 65202) 65100
- B. (65206 65202)65100
- C. 65250 (65206 65202) 65100
- D. 65200 65100

Correct Answer: D

[Latest 4A0-102 Dumps](#)

[4A0-102 Practice Test](#)

[4A0-102 Exam Questions](#)