

# 4A0-102<sup>Q&As</sup>

Alcatel-Lucent Border Gateway Protocol

## Pass Alcatel-Lucent 4A0-102 Exam with 100% Guarantee

Free Download Real Questions & Answers **PDF** and **VCE** file from:

<https://www.pass2lead.com/4a0-102.html>

100% Passing Guarantee  
100% Money Back Assurance

Following Questions and Answers are all new published by Alcatel-Lucent Official Exam Center

- ⚙️ **Instant Download** After Purchase
- ⚙️ **100% Money Back** Guarantee
- ⚙️ **365 Days** Free Update
- ⚙️ **800,000+** Satisfied Customers



**QUESTION 1**

How is the aggregator attribute handled with 32-bit AS numbers?

- A. With the same method and attribute as 16-bit AS numbers.
- B. With the same method as 16-bit AS numbers, but using the AS4\_Aggregator attribute.
- C. Aggregation is not yet supported with 32-bit AS numbers.
- D. By using a dummy value of 23456 in the 16-bit AS aggregator field. This value lets the router know it needs to read the 32-bit AS number that is contained in the nextTLV.

Correct Answer: B

**QUESTION 2**

The configuration of an Alcatel-Lucent 7750 SR is given below. Router R1 has established BGP sessions with routers R2 and R3. Which of the following is TRUE?

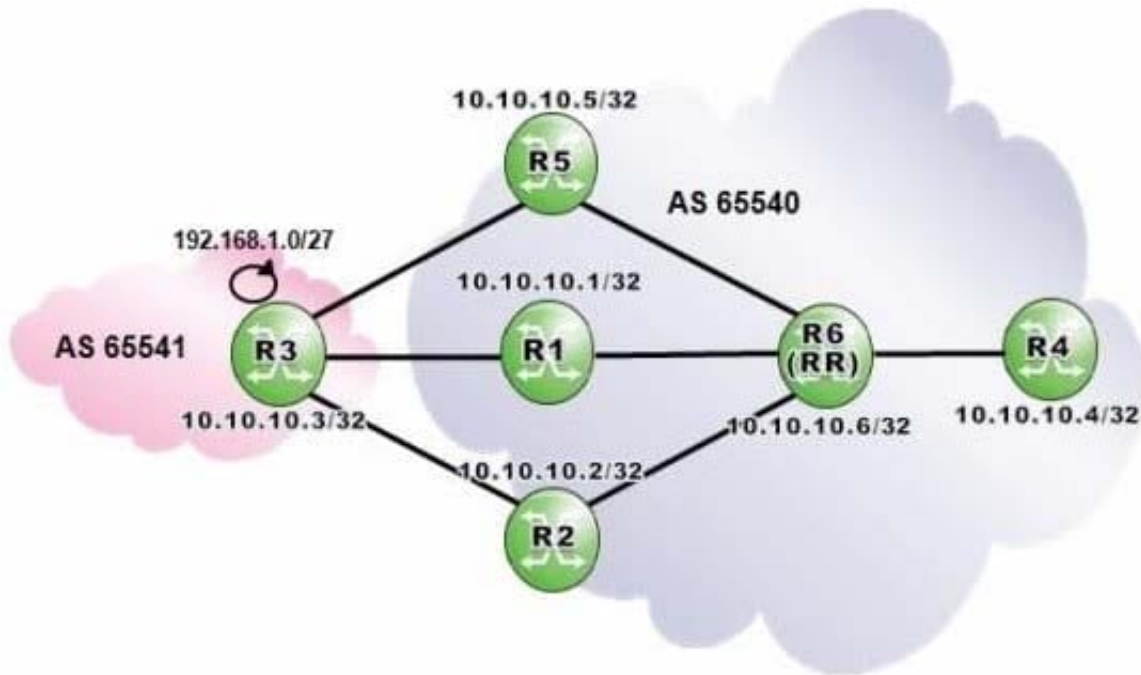
```
R1>config>router>bgp# info
-----
group "BGP-Peers"
  peer-as 65540
  neighbor 10.10.10.2
    description "R2"
  exit
  neighbor 10.10.10.3
    description "R3"
    peer-as 65550
  exit
exit
```

- A. Router R1 forms an iBGP session with router R2, and an eBGP session with router R3.
- B. Router R1 forms iBGP sessions with routers R2 and R3.
- C. Router R1 forms eBGP sessions with routers R2 and R3.
- D. The types of BGP sessions with routers R2 and R3 cannot be determined.

Correct Answer: D

**QUESTION 3**

Click the exhibit.



Router R6 is a route reflector with clients R1, R2, R4 and R5. R4 receives three routes from router R6 and is configured with ECMP 3. Given the following BGP configuration on router R4, how many primary and backup paths will be present in router R4's BGP routing table?

```
R4>config>router>bgp# info
```

```
-----  
multipath 3  
add-paths  
  ipv4 send 3 receive  
exit  
backup-path ipv4  
group "IBGP"  
  peer-as 65540  
  neighbor 10.10.10.6  
  exit  
exit
```

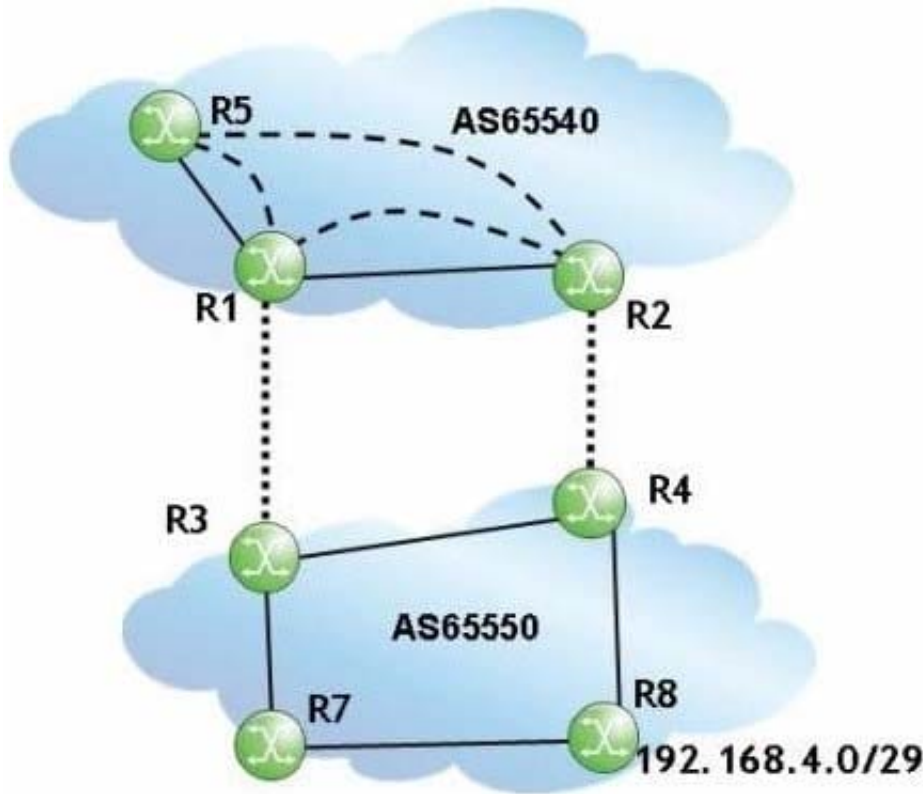
- A. Two primary paths and one backup path.
- B. One primary path and two backup paths.
- C. Three primary path and one backup path,

D. Three primary paths.

Correct Answer: D

**QUESTION 4**

Click the exhibit.



Router R2 receives a route to 192.168.4.0/29 from router R4 and sets the local preference to 110.

Router R1 receives the route to 192.168.4.0/29 from router R3, and sets the local preference to 80. There

is a full iBGP mesh in AS 65540, but router R5 only has a physical connection to router R1.

Which path does traffic destined to 192.168.4.0/29 take from router R5?

- A. R5-R2-R4-R8
- B. R5-R1-R3-R4-R8
- C. R5-R1-R2-R4-R8
- D. R5-R1-R3-R7-R8

Correct Answer: C

**QUESTION 5**

Which of the following statements regarding the Originator\_ID attribute is TRUE?

- A. The BGP router that originates an update sets the Originator\_ID.
- B. The Originator\_ID is set to the ClusterID of the advertising router reflector.
- C. Both confederation and route reflector topologies use the Originator\_ID.
- D. A BGP router ignores an update that contains its own BGP router ID as Originator\_ID.

Correct Answer: D

[4A0-102 VCE Dumps](#)

[4A0-102 Study Guide](#)

[4A0-102 Exam Questions](#)