

4A0-103^{Q&As}

Alcatel-Lucent Multiprotocol Label Switching

Pass Alcatel-Lucent 4A0-103 Exam with 100% Guarantee

Free Download Real Questions & Answers **PDF** and **VCE** file from:

<https://www.pass2lead.com/4a0-103.html>

100% Passing Guarantee
100% Money Back Assurance

Following Questions and Answers are all new published by Alcatel-Lucent Official Exam Center

- ⚙️ **Instant Download** After Purchase
- ⚙️ **100% Money Back** Guarantee
- ⚙️ **365 Days** Free Update
- ⚙️ **800,000+** Satisfied Customers



QUESTION 1

If an Alcatel-Lucent 7750 LSR receives a labeled packet with a outer label TTL of 250 and an inner label TTL of 251, which of the following statements is true?

- A. The packet will be label switched; the outer label TTL will be 249 and the inner label TTL will be 250.
- B. The packet will be label switched; the outer label TTL will be 249 and the inner label TTL will be 251.
- C. The packet will be label switched; both the outer label TTL and the inner label TTL will be 250.
- D. The packet will be label switched; both the outer label TTL and the inner label TTL will be 249, because they must be the same.

Correct Answer: B

QUESTION 2

Click on the exhibit.

```
configure router policy-options
  begin
  prefix-list "officeA_subnet"
    prefix 192.168.1.0/30 exact
  exit
  policy-statement "LDP_export"
    entry 10
      from
        prefix-list "officeA_subnet"
      exit
      action reject
    exit
    entry 20
      from
        protocol direct
      exit
      action accept
    exit
  exit
exit
commit
```

This policy is applied as an LDP export policy. In addition to the FECs learned from its neighbors, which FECs will appear in this router's LIB?

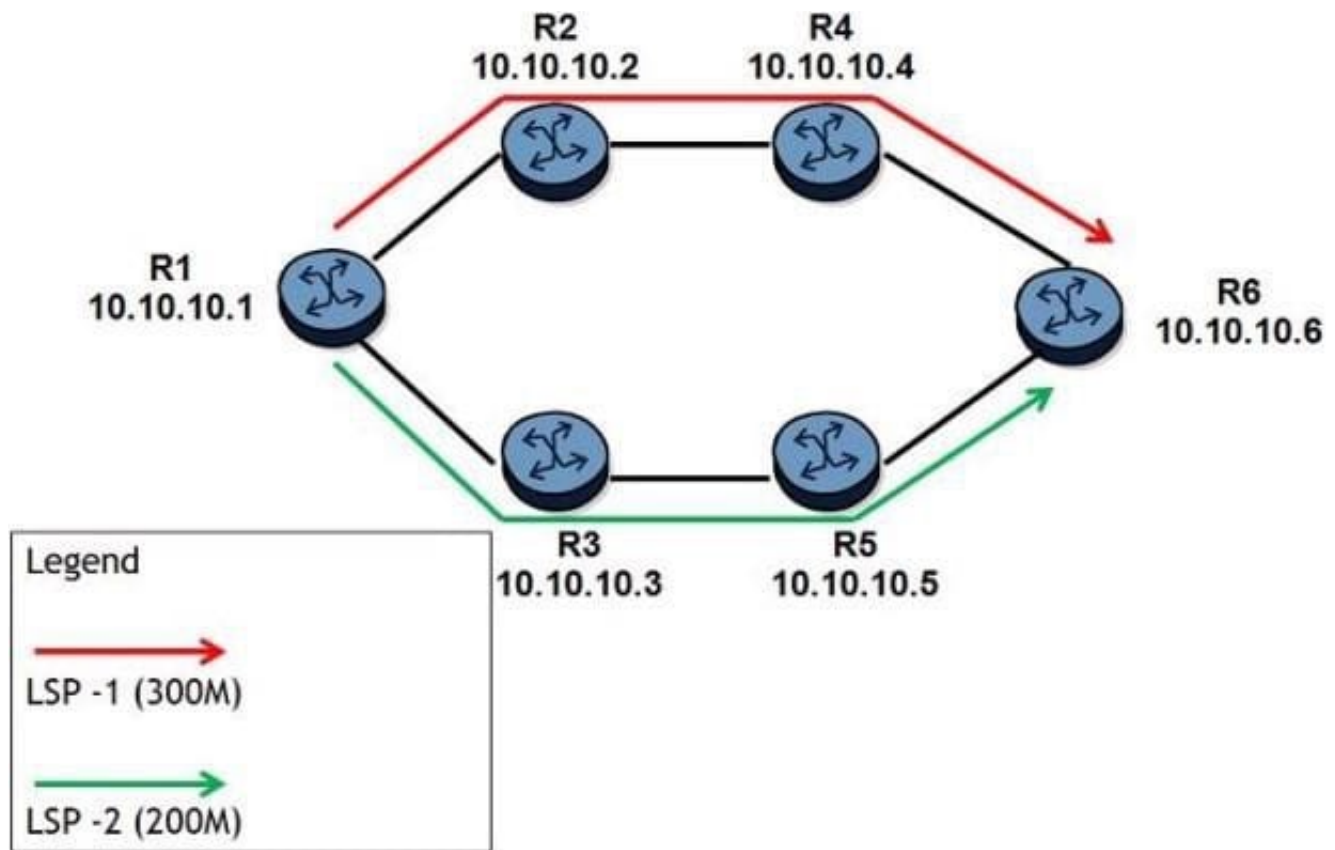
- A. All FECs with a prefix of 192.168.1.0/30.

- B. Local FECs with a prefix of 192.168.1.0/30.
- C. All FECs excluding 192.168.1.0/30.
- D. Local FECs excluding 192.168.1.0/30.

Correct Answer: D

QUESTION 3

Click on the exhibit.



All links have 1 Gbps unreserved bandwidth initially and all LSPs have the least-fill feature enabled. After the two LSPs have been signaled as shown, two additional LSPs are configured.

LSP-3 is signaled first with 50Mbps reserved. LSP-4 is signaled after with 400Mbps reserved.

Which paths will CSPF choose for LSP-3 and LSP-4?

- A. Both LSP-3 and LSP-4 take R1-R2-R4-R6.
- B. Both LSP-3 and LSP-4 take R1-R3-R5-R6.
- C. LSP-3 takes R1-R3-R5-R6 and LSP-4 takes R1-R2-R4-R6.
- D. LSP-3 takes R1-R2-R4-R6 and LSP-4 takes R1-R3-R5-R6.

E. CSPF randomly chooses one of the equal cost paths for the two LSPs.

Correct Answer: B

QUESTION 4

Which of the following about the use of RRO in fast reroute is FALSE?

- A. RRO is used to report the protection tunnel status to the head-end router.
- B. RRO contains the MP information that is required by a PLR for facility protection.
- C. RRO contains the label information that is expected by an MP for facility protection.
- D. RRO is used to inform downstream routers about the protection type requested.

Correct Answer: D

QUESTION 5

Which one of the following statements regarding RSVP LSP configuration is true?

- A. LSPs must always terminate on a system ID.
- B. MPLS and RSVP must be enabled on all routers.
- C. Interfaces must be individually created in RSVP.
- D. Path definitions must include at least one hop entry.

Correct Answer: B

[Latest 4A0-103 Dumps](#)

[4A0-103 Study Guide](#)

[4A0-103 Braindumps](#)