

# 4A0-103<sup>Q&As</sup>

Alcatel-Lucent Multiprotocol Label Switching

## Pass Alcatel-Lucent 4A0-103 Exam with 100% Guarantee

Free Download Real Questions & Answers **PDF** and **VCE** file from:

<https://www.pass2lead.com/4a0-103.html>

100% Passing Guarantee  
100% Money Back Assurance

Following Questions and Answers are all new published by Alcatel-Lucent Official Exam Center

- ⚙️ **Instant Download** After Purchase
- ⚙️ **100% Money Back** Guarantee
- ⚙️ **365 Days** Free Update
- ⚙️ **800,000+** Satisfied Customers



### QUESTION 1

Which of the following devices assumes the active role during the establishment of an LDP session?

- A. The peer with the higher physical address.
- B. The peer with the higher transport address.
- C. The peer with the lower physical address.
- D. The peer with the lower transport address.
- E. The peer that generated the first Hello message.

Correct Answer: B

### QUESTION 2

Click on the exhibit.

```
*A:SRC_R3# oam lsp-ping "lsp-toR2"  
LSP-PING lsp-toR2: 92 bytes MPLS payload  
Seq=1, send from intf toR1, reply from 10.10.10.2  
    udp-data-len=32 ttl=255 rtt=0.000ms rc=3 (EgressRtr)  
  
---- LSP lsp-toR2 PING Statistics ----  
1 packets sent, 1 packets received, 0.00% packet loss  
round-trip min = 0.000ms, avg = 0.000ms, max = 0.000ms, stddev = 0.000ms  
*A:SRC_R3#
```

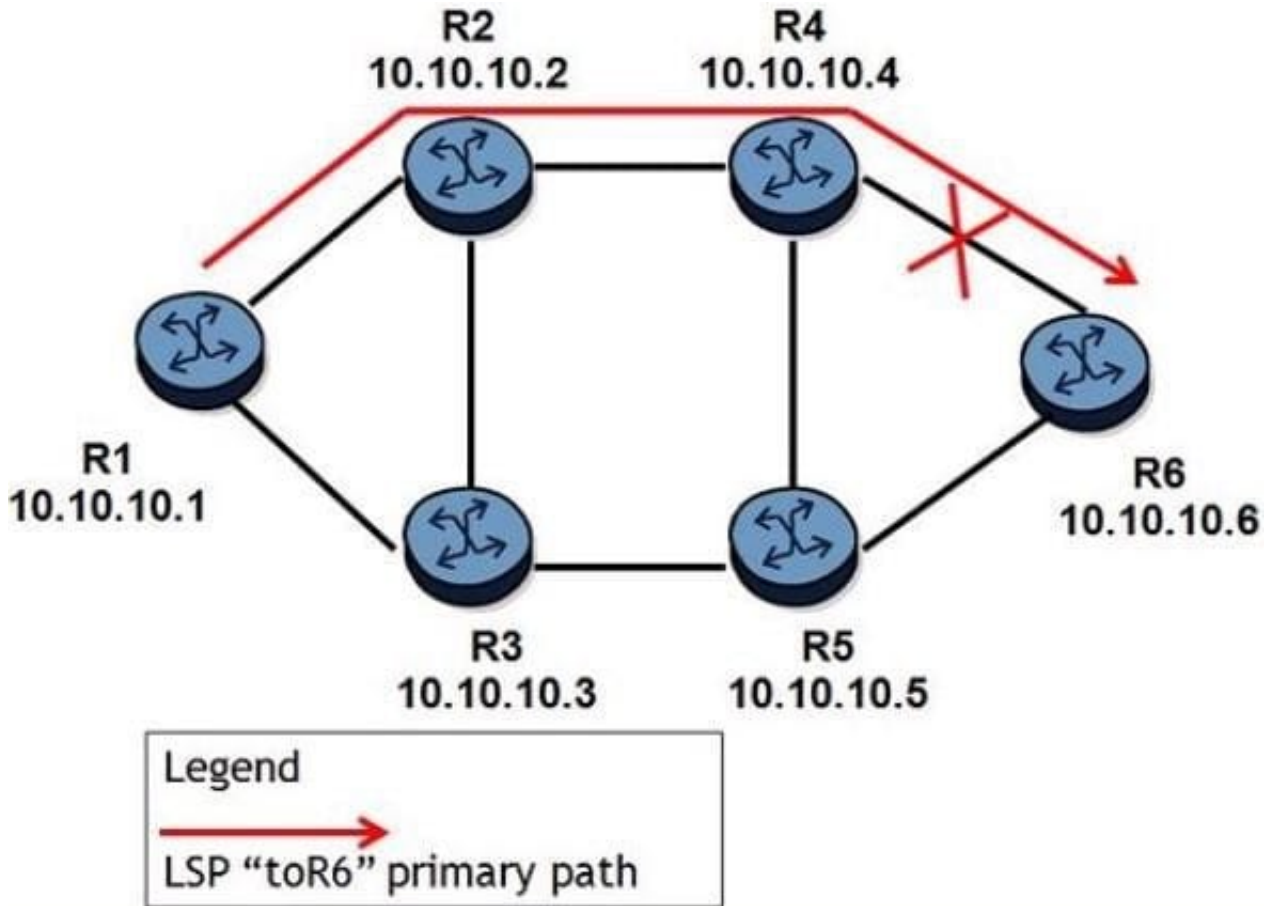
Which of the following is FALSE?

- A. The lsp-ping tool is used to perform a unidirectional LSP test.
- B. The router 10.10.10.2 is the egress router of the LSP.
- C. The router can reach the far-end of the LSP through an RSVP-TE tunnel.
- D. The router can reach the far-end of the LSP through an LDP tunnel.

Correct Answer: D

### QUESTION 3

Click on the exhibit.



An LSP path is established on router R1 toward router R6. After router R4 detects that the link between routers R4 and R6 goes down, which of the following will affect the failure propagation time?

- A. The time router R4 takes to send a PATH Error message toward the head-end router.
- B. The time router R4 takes to detect RSVP Hello message timeout from router R6.
- C. The time router R4 takes to send a RESV Error message to the head-end router.
- D. The time router R1 takes to signal an alternate path through router R3.

Correct Answer: A

**QUESTION 4**

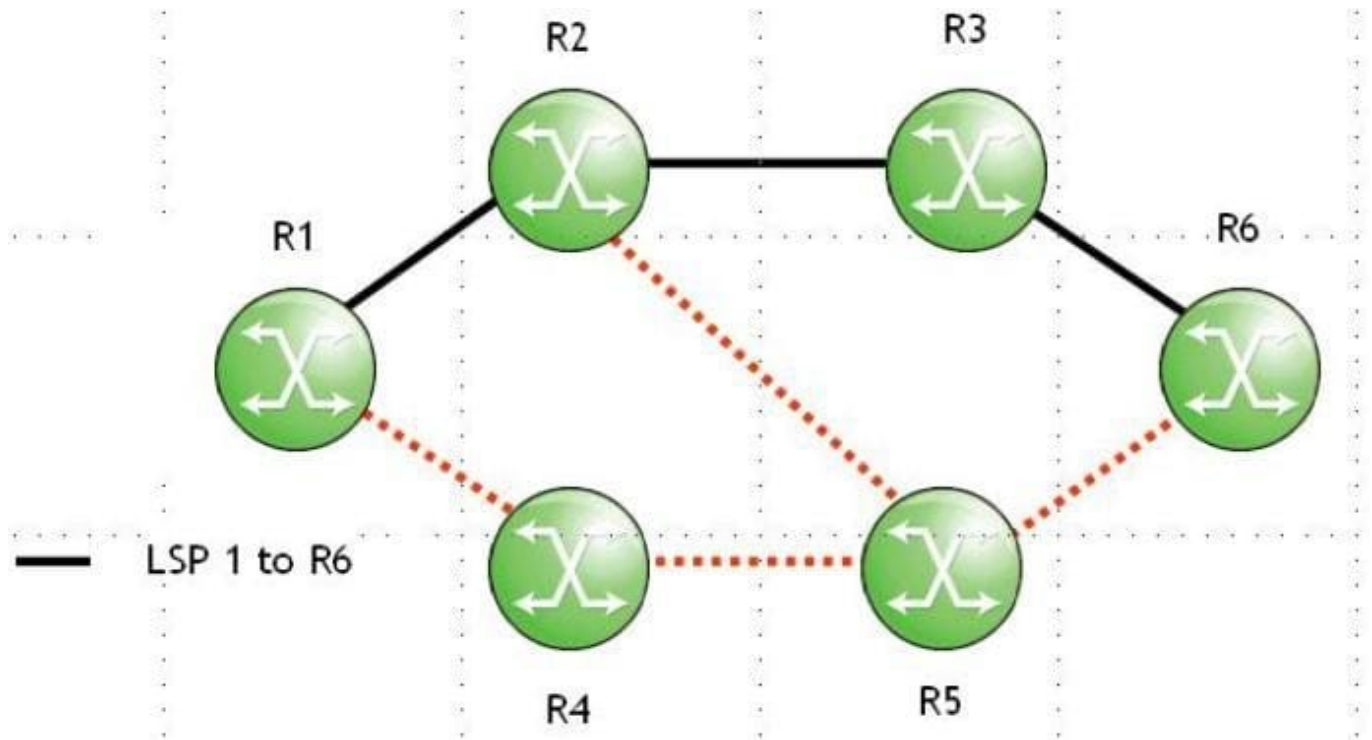
Which of the following about Fast Reroute node protection tunnels is FALSE?

- A. Node protection tunnels detour around a failed next downstream router.
- B. Node protection tunnels can only be requested for a primary LSP path.
- C. Node protection tunnels are only used by one-to-one Fast Reroute.
- D. Link protection tunnels are established if a router is unable to establish node protection tunnels.

Correct Answer: C

**QUESTION 5**

Click on the exhibit.



When router R1 forwards a PATH message to router R2, which of the following about the PATH message's IP header is TRUE?

- A. The options field is set to router alert.
- B. The source address is R1's egress interface address.
- C. The destination address is R2's ingress interface address.
- D. The HOP object includes R2's system address.

Correct Answer: A

[Latest 4A0-103 Dumps](#)

[4A0-103 Study Guide](#)

[4A0-103 Exam Questions](#)