

4A0-106^{Q&As}

Alcatel-Lucent Virtual Private Routed Networks

Pass Alcatel-Lucent 4A0-106 Exam with 100% Guarantee

Free Download Real Questions & Answers **PDF** and **VCE** file from:

<https://www.pass2lead.com/4a0-106.html>

100% Passing Guarantee
100% Money Back Assurance

Following Questions and Answers are all new published by Alcatel-Lucent Official Exam Center

- ⚙️ **Instant Download** After Purchase
- ⚙️ **100% Money Back** Guarantee
- ⚙️ **365 Days** Free Update
- ⚙️ **800,000+** Satisfied Customers



QUESTION 1

For a Carrier Supporting Carrier (CSC) VPRN where the customer carrier is a BGP/MPLS VPN Service Provider (SP), which of the following is FALSE?

- A. The customer carrier network must be MPLS-enabled.
- B. If the customer carrier offers VPRN services, PE routers residing in different customer carrier sites must run iBGP between them.
- C. The customer carrier provides Layer 2 and Layer 3 services to its end-customers.
- D. A single CSC VPRN is configured on the network provider to support all services offered by the customer carrier.

Correct Answer: B

QUESTION 2

In a Carrier Supporting Carrier (CSC) VPRN, which of the following is a benefit to the network provider?

- A. No need to build and maintain its own backbone.
- B. The solution scales as the number of serviced customer carriers increases.
- C. The solution scales as the number of VPNs offered by the customer carriers increases.
- D. The ability to manage end-customer services.

Correct Answer: C

QUESTION 3

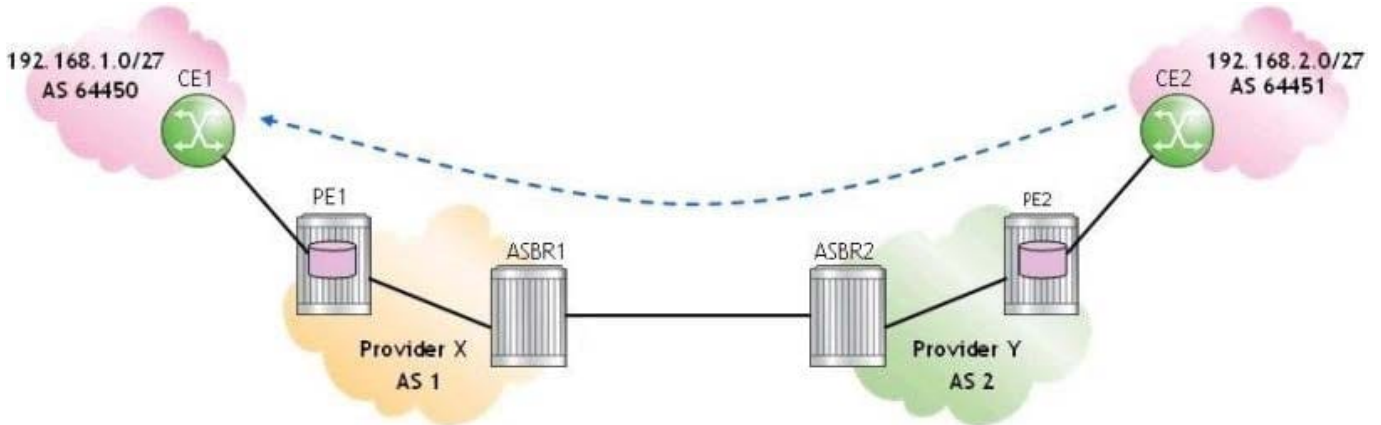
For Carrier Supporting Carrier (CSC) VPRN, which of the following is NOT applicable to both types of customer carriers: BGP/MPLS service providers and Internet service providers?

- A. eBGP is used for route and label exchange between CSC-CE and CSC-PE routers.
- B. Both IGP and MPLS are required within each customer carrier site.
- C. MP-iBGP is used to advertise routes between the CSC-PE routers.
- D. End-customer and Internet routes are advertised directly between the PE routers.

Correct Answer: D

QUESTION 4

Click the exhibit.



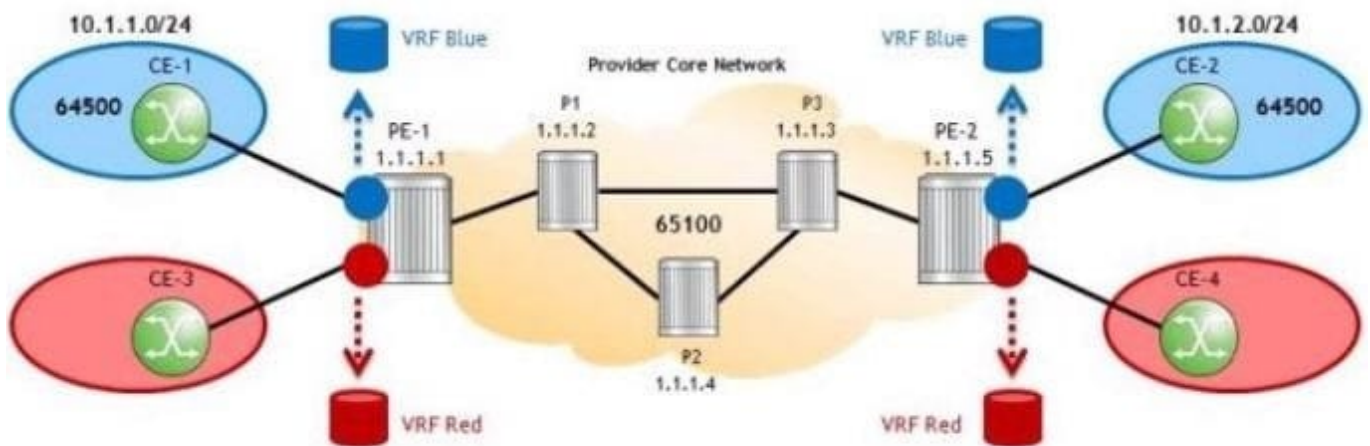
For the inter-AS model B VPRN, which of the following is FALSE when CE2 sends an IP packet to 192.168.1.1?

- A. PE2 pushes one label on the IP packet and forwards it to ASBR2.
- B. ASBR2 forwards the IP packet with one label to ASBR1.
- C. ASBR1 forwards the IP packet with two labels to PE1.
- D. PE1 forwards an unlabeled IP packet to CE1.

Correct Answer: A

QUESTION 5

Click the exhibit.



```

PE-1# configure router bgp
PE-1>config>router>bgp$ family vpn-ipv4
PE-1>config>router>bgp$ group BGP-Peers
PE-1>config>router>bgp>group$ peer-as 65100
PE-1>config>router>bgp>group$ local-address 1.1.1.1
PE-1>config>router>bgp>group$ neighbor 1.1.1.5
PE-1>config>router>bgp>group>neighbor$ as-override
PE-1>config>router>bgp>group>neighbor$ exit all
PE-1#
    
```

The AS-override method is used to prevent BGP loops in the blue customer VPRN. Which statement about the configuration is TRUE?

- A. the configuration is complete and correct.
- B. `as-override` should be configured under the BGP context.
- C. `as-override` should be configured under the group context.
- D. `as-override` should not be part of this configuration.

Correct Answer: D

[4A0-106 PDF Dumps](#)

[4A0-106 Practice Test](#)

[4A0-106 Exam Questions](#)