

4A0-106^{Q&As}

Alcatel-Lucent Virtual Private Routed Networks

Pass Alcatel-Lucent 4A0-106 Exam with 100% Guarantee

Free Download Real Questions & Answers **PDF** and **VCE** file from:

<https://www.pass2lead.com/4a0-106.html>

100% Passing Guarantee
100% Money Back Assurance

Following Questions and Answers are all new published by Alcatel-Lucent Official Exam Center

- ⚙️ **Instant Download** After Purchase
- ⚙️ **100% Money Back** Guarantee
- ⚙️ **365 Days** Free Update
- ⚙️ **800,000+** Satisfied Customers



QUESTION 1

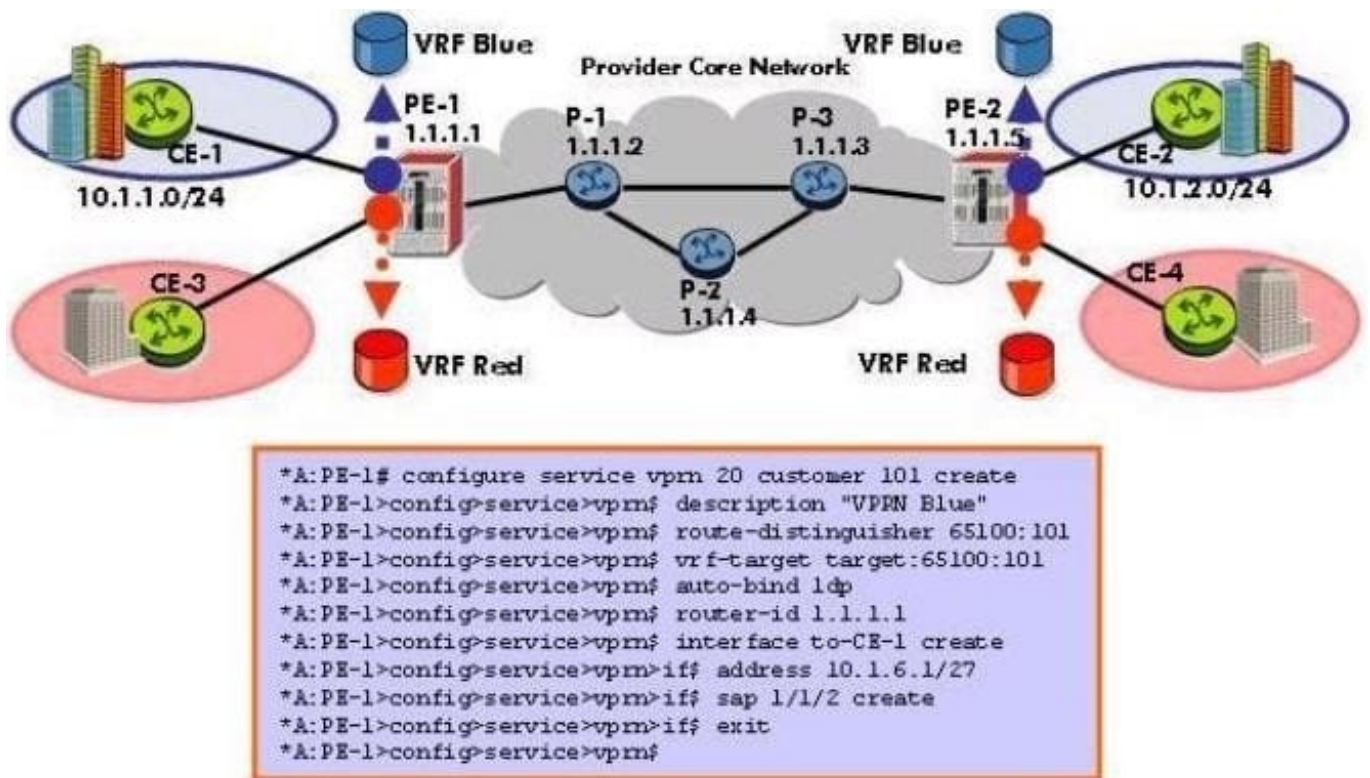
Which of the following about the control plane in Carrier Supporting Carrier (CSC) VPRN is FALSE?

- A. End-customer routes are populated in the network provider CSC VRF.
- B. The customer carrier does not learn any network provider internal routes.
- C. The network provider learns customer carrier PE system addresses.
- D. Routes exchanged between the customer carrier and the network provider are labeled.

Correct Answer: A

QUESTION 2

Click the exhibit.



What is wrong with the VPRN configuration applied on this Alcatel-Lucent 7750 SR?

- A. The VPRN ID must match the value used in the vrf-target command.
- B. The VPRN ID must match the value used in the route-distinguisher command.
- C. The router-id command should not be used in this context.
- D. The "no shutdown" command must be configured for the VPRN to be operationally UP.

Correct Answer: D

QUESTION 3

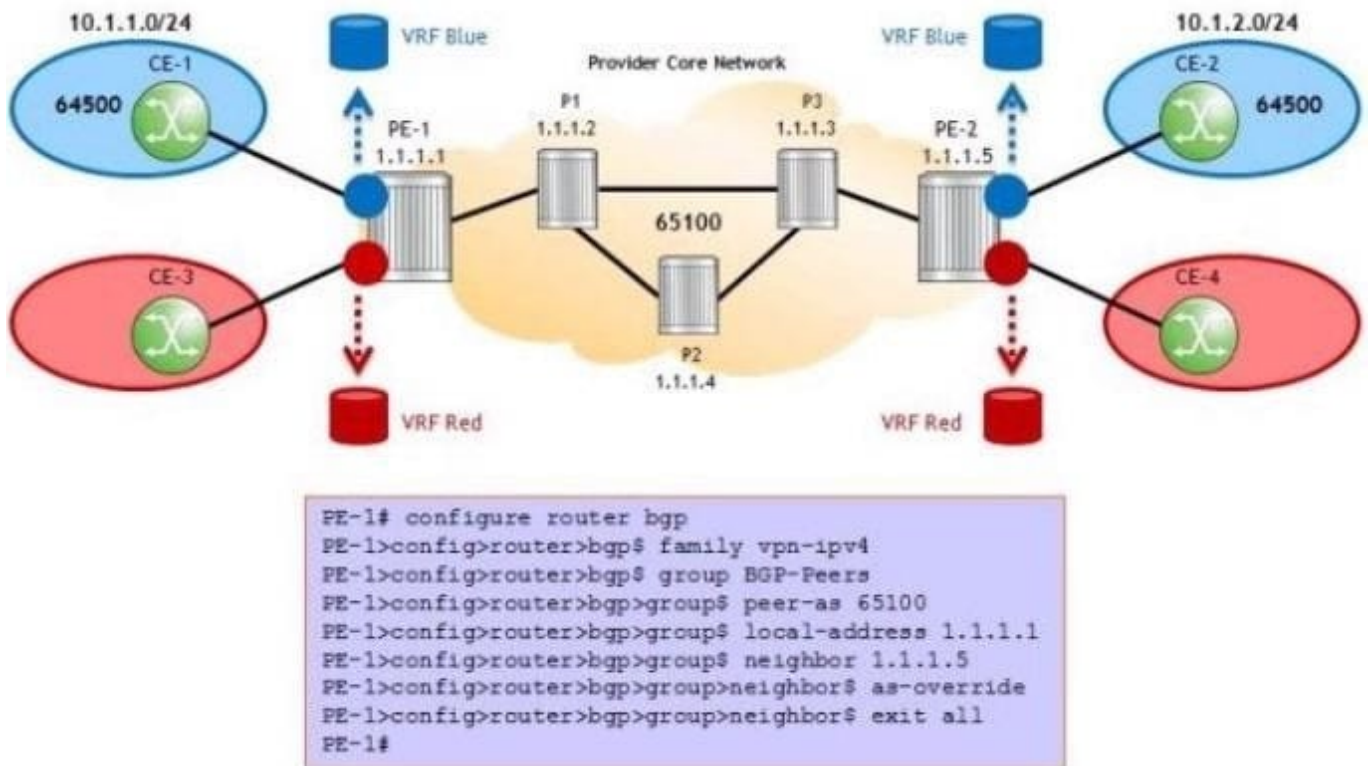
In a Carrier Supporting Carrier (CSC) VPRN, which of the following is a benefit to the customer carrier?

- A. The ability to offer Internet connectivity and a variety of services over a single CSC VPRN interface.
- B. The ability to maintain its own backbone.
- C. The ability to learn system addresses of network provider PEs.
- D. There is no need to manage end-customer services.

Correct Answer: A

QUESTION 4

Click the exhibit.



The AS-override method is used to prevent BGP loops in the blue customer VPRN. Which statement about the configuration is TRUE?

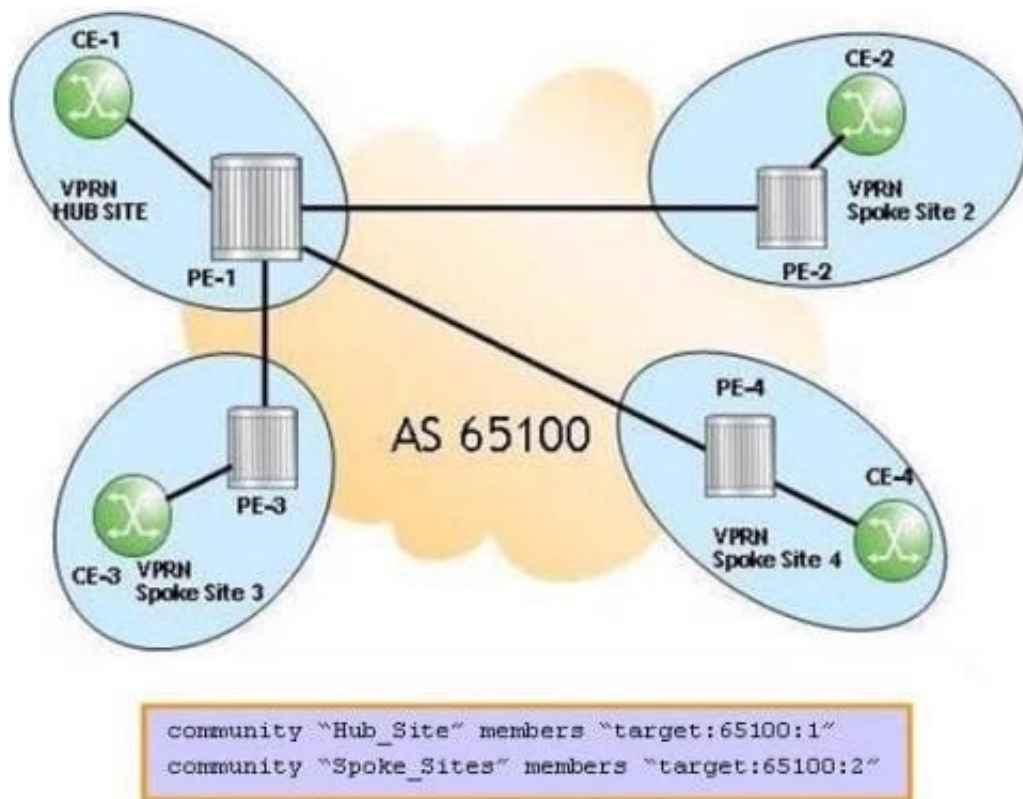
- A. the configuration is complete and correct.
- B. `as-override` should be configured under the BGP context.

- C. `\\as-override\\` should be configured under the group context.
- D. `\\as-override\\` should not be part of this configuration.

Correct Answer: D

QUESTION 5

Click the exhibit.



Community lists are configured for the PE hub and spoke VPRN. Which communities should be exported by the VPRN service on PE1?

- A. "Spoke.Sites" and "Hub_Site"
- B. "Spoke_Sites"
- C. "Hub_Site"
- D. No communities should be exported

Correct Answer: C