

# 4A0-110<sup>Q&As</sup>

Alcatel-Lucent Advanced Troubleshooting

## Pass Alcatel-Lucent 4A0-110 Exam with 100% Guarantee

Free Download Real Questions & Answers **PDF** and **VCE** file from:

<https://www.pass2lead.com/4a0-110.html>

100% Passing Guarantee  
100% Money Back Assurance

Following Questions and Answers are all new published by Alcatel-Lucent Official Exam Center

- ⚙️ **Instant Download** After Purchase
- ⚙️ **100% Money Back** Guarantee
- ⚙️ **365 Days** Free Update
- ⚙️ **800,000+** Satisfied Customers



**QUESTION 1**

A CSPF LSP with no bandwidth requirement is established from Node 1 (10.10.1.1) to Node 2 (10.10.1.2). OSPF-TE is enabled on all routers in the network. What commands can be used on Node 1 to determine if another LSP can be established to Node 2 with 400M bandwidth requirement? Choose all that apply.

- A. Show router lsp detail
- B. Show router ospf database detail
- C. Show router ospf opaque-database detail
- D. Tools perform router mpls cspf to 10.10.1.2 bandwidth 400
- E. Tools dump router mpls lspinfo

Correct Answer: CD

---

**QUESTION 2**

Two routers are physically connected running ISIS. ISIS L2 adjacency is up and running but L1 adjacency is not up. Review the configuration information shown below: Which of the following statement best describe the cause of the problem? Select one answer only.

Pod-1

```
config>router>
  isis
  interface "toPod2"
  exit

# show router isis interface detail
=====
ISIS Interfaces
=====
-----
Interface      : toPod2                      Level Capability: L1L2
Oper State     : Up                       Admin State      : Up
Auth Type      : None
Circuit Id     : 2                        Retransmit Int. : 5
Type           : Broadcast                LSP Pacing Int. : 100
Mesh Group     : Inactive                  CSNP Int.       : 10
Bfd Enabled    : No

Level          : 1                        Adjacencies     : 0
Desg. IS       : Pod1                     Metric          : 10
Auth Type      : None                     Hello Mult.     : 3
Hello Timer    : 9                        Passive         : No
Priority       : 64

Level          : 2                        Adjacencies     : 1
Desg. IS       : Pod1                     Metric          : 10
Auth Type      : None                     Hello Mult.     : 3
Hello Timer    : 9                        Passive         : No
Priority       : 64
```

Pod-2

```
config>router>
  isis
  interface "toPod1"
  exit

# show router isis interface detail
=====
ISIS Interfaces
=====
-----
Interface      : toPod1                      Level Capability: L1L2
Oper State     : Up                       Admin State      : Up
Auth Type      : None
Circuit Id     : 3                        Retransmit Int. : 5
Type           : Broadcast                LSP Pacing Int. : 100
Mesh Group     : Inactive                  CSNP Int.       : 10
Bfd Enabled    : No

Level          : 1                        Adjacencies     : 0
Desg. IS       : Pod2                     Metric          : 10
Auth Type      : None                     Hello Mult.     : 3
Hello Timer    : 9                        Passive         : No
Priority       : 64

Level          : 2                        Adjacencies     : 1
Desg. IS       : Pod1                     Metric          : 10
Auth Type      : None                     Hello Mult.     : 3
Hello Timer    : 9                        Passive         : No
Priority       : 64
```

- A. The ISIS interface level is not configured on both routers
- B. The ISIS interface type should be configured as point-to-point interfaces
- C. ISIS System IDs are not configured on both routers
- D. ISIS Area addresses are not configured on both routers
- E. ISIS level capacity are not configured on both routers

Correct Answer: D

---

### QUESTION 3

Which command should be used to enable automatic synchronization for all software images and configuration on the Alcatel 7x50?

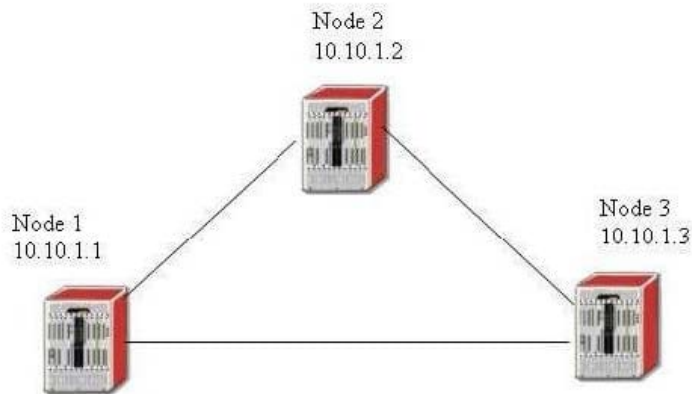
- A. Admin redundancy synchronization boot-env
- B. Admin redundancy synchronization config
- C. Configure redundancy synchronize boot-env
- D. Configure redundancy synchronize config
- E. It is enabled by default

Correct Answer: C

---

### QUESTION 4

Based on the configuration below, which statement best describes the reason why VPLS 101 is not up on all three nodes.



Node-1

```
config>service>
  vpls 101
  stp
  shutdown
  exit
  ssp 1/1/5 create
  exit
  spoke-sdp 30:30 create
  exit
  no shutdown
  sdp 30
  far-end 10.10.1.2
  ldp
  keep-alive
  shutdown
  exit
  no shutdown
```

Node-2

```
config>service>
  vpls 101
  stp
```

```
    shutdown
  exit
  spoke-sdp 40:40 create
  exit
  spoke-sdp 50:50 create
  exit
  no shutdown
  sdp 40
  far-end 10.10.1.1
  ldp
  keep-alive
    shutdown
  exit
  no shutdown
  sdp 50
  far-end 10.10.1.3
  ldp
  keep-alive
    shutdown
  exit
  no shutdown
```

Node-3

```
config>service>
  vpls 101
  stp
    shutdown
  exit
  sap 1/1/5 create
  exit
  spoke-sdp 60:60 create
  exit
  no shutdown
  sdp 60
  far-end 10.10.1.2
  ldp
  keep-alive
    shutdown
  exit
  no shutdown
```

- A. Service VC id has to match on all three nodes
- B. SDP id has to match on all three nodes
- C. STP has to be enabled on all three nodes
- D. No SAP is configured on Node-2
- E. Mesh-sdp has to be used on all three nodes

Correct Answer: A

## QUESTION 5

A policy is configured to redistribute four active static routes into ISIS. No ISIS route is received on the far end, what is the cause of the problem?

```
config>router>policy-options>
  policy-statement static-isis
    entry 10
      from
        protocol static
config>router>isis>
  area-id 69.1000
  export "static-isis"
  interface "toNode2"
```

- A. Action accept?has to be configured for entry 10
- B. Default-action has to be configured as accept
- C. Import policy should be configured under ISIS instead of export policy
- D. Within entry 10, to protocol isis has to be configured
- E. A prefix list has to be configured to filter the routes

Correct Answer: A

[Latest 4A0-110 Dumps](#)

[4A0-110 Practice Test](#)

[4A0-110 Exam Questions](#)