

5V0-41.20^{Q&As}

VMware SD-WAN Troubleshoot

Pass VMware 5V0-41.20 Exam with 100% Guarantee

Free Download Real Questions & Answers **PDF** and **VCE** file from:

<https://www.pass2lead.com/5v0-41-20.html>

100% Passing Guarantee
100% Money Back Assurance

Following Questions and Answers are all new published by VMware
Official Exam Center

-  **Instant Download** After Purchase
-  **100% Money Back** Guarantee
-  **365 Days** Free Update
-  **800,000+** Satisfied Customers

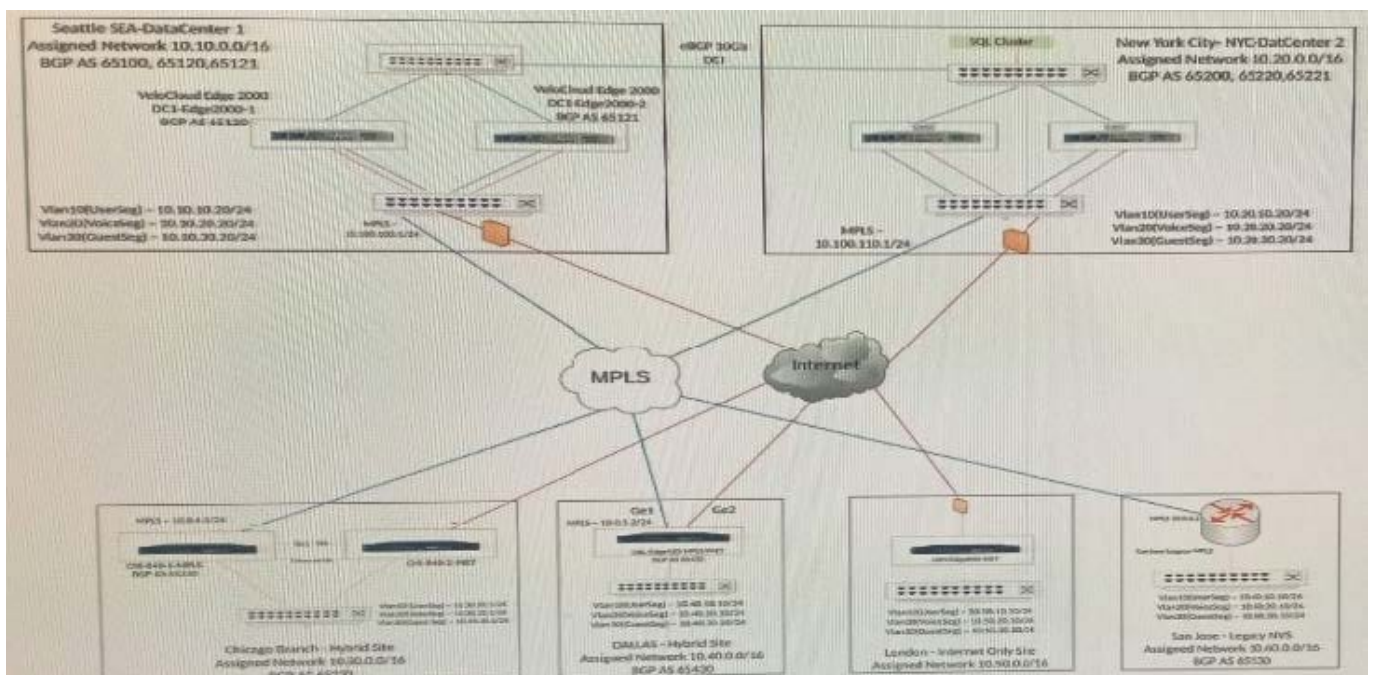


QUESTION 1

Scenario 2:

After completing the branch activation activities for all required branches, the network administrator attempts to test connectivity between the various branches and between the hubs and branches. The administrator notices a lack of connectivity despite being certain that configurations have been complete. The administrator also observed that several users are reporting intermittent connectivity to some of the applications they are accessing. Other users are reporting no access to these applications. Other users at some of the branches claim they cannot get to certain public resources. The administrator wants to ensure that all sites can talk to each other and all resources are accessible.

Exhibit.



Where can the network administrator check to see what routes are present on the London- site Edge?

- A. Log into the VCO > Configuration > Overlay Flow Control
- B. Log into the VCO > Test and Troubleshoot > Remote Diagnostics > Run "List Paths"
- C. Log into the VCO > Test and Troubleshoot > Remote Diagnostics > Run "Route Table Dump"
- D. Log into the VCO > Monitoring > Overlay Flow Control

Correct Answer: C

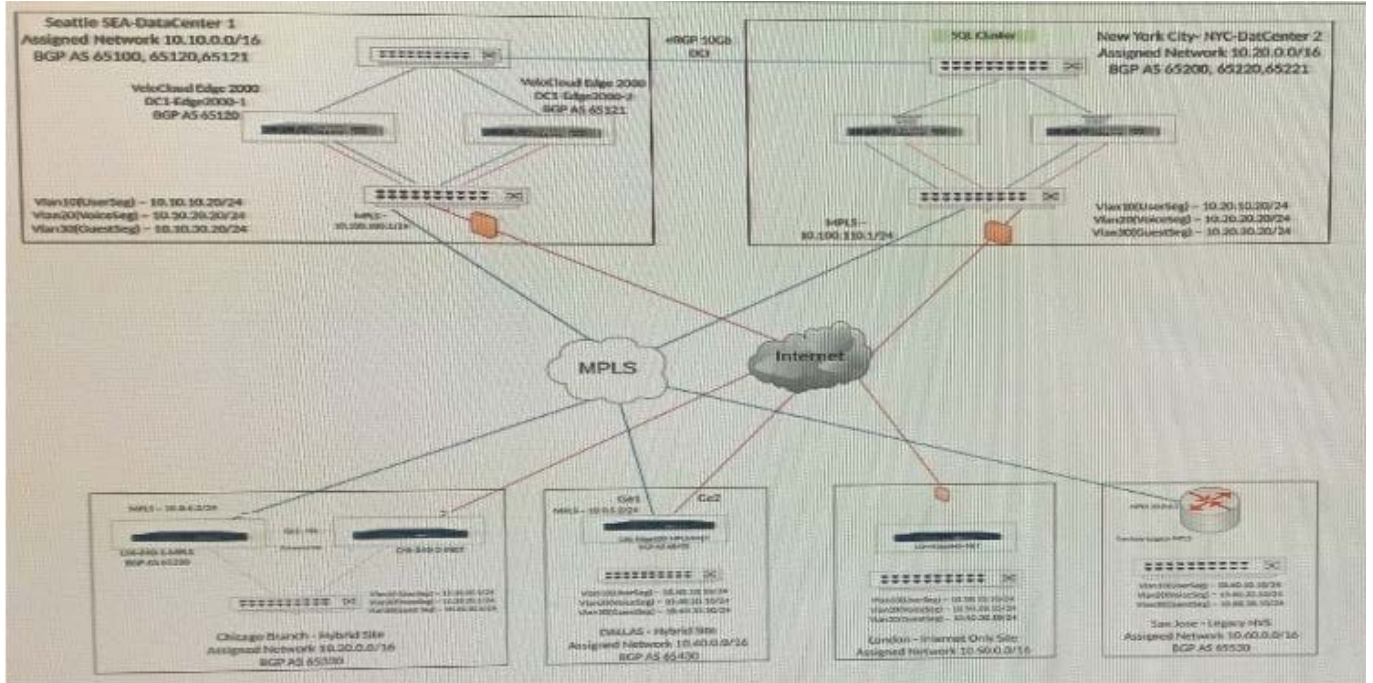
QUESTION 2

Scenario 1:

A network administrator is tasked with enabling SD-WAN at three branch locations. A topology has been provided for reference. For each site, the administrator is having issues bringing edges online, as another administrator has gone

ahead and created a configuration ahead of time. The organization has several branch sites. One is an Internet-only site and two are Hybrid locations with both internet and MPLS. The last location is MPLS only. There are hub data center locations in this environment as well. Please refer to the topology.

Exhibit.



Interface Settings										
Switch Ports Settings										
Actions	Interface	Mode	VLANS	Addressing	WAN Overlay	Segment	Multicast			
Edit	LAN1	Access	1 - Corporate			Global Segment				
Edit	LAN2	Access	1 - Corporate			Global Segment				
Edit	LAN3	Access	1 - Corporate			Global Segment				
Edit	LAN4	Access	1 - Corporate			Global Segment				
Edit	LAN5	Trunk	1 - Corporate 10 - UserSeg 20 - VoiceSeg 30 - GuestSeg			Global Segment Global Segment Global Segment Global Segment				
Edit	LAN6	Access	1 - Corporate			Global Segment				
Edit	LAN7	Access	1 - Corporate			Global Segment				
Edit	LAN8	Access	1 - Corporate			Global Segment				
Edit	GE1			Static IP: 10.4.0.2/24 Gateway: 10.0.0.1	User Defined	all segments			☑	
Edit	GE2			DHCP	User Defined	all segments			☑	
Edit	SFP1			DHCP	Auto Detect	all segments			☑	
Edit	SFP2			DHCP	Auto Detect	all segments			☑	
Edit	WLAN1	WiFi	1 - Corporate			Global Segment				
Edit	WLAN2	Interface disabled								

WAN Settings					
Type	Name	Interfaces	Link Type	Passive	Alerts
User Defined	INET	GE1	Public Wired		☑
User Defined	MPLS	GE2	Private Wired		☑

The network administrator determines the issue preventing the Dallas Branch from coming online.

Refer to the Exhibit(s).

What must the administrator do for the Edge to communicate with the Orchestrator and other branches?

- A. Reverse the WAN Overlay configurations
- B. Update the Orchestrator to the latest version as it enables "Auto WAN Swapping"
- C. Delete the User Defined WAN Overlays as the Orchestrator will discover these automatically on MPLS and Internet
- D. Create a User-defined WAN Overlay to bond both interfaces

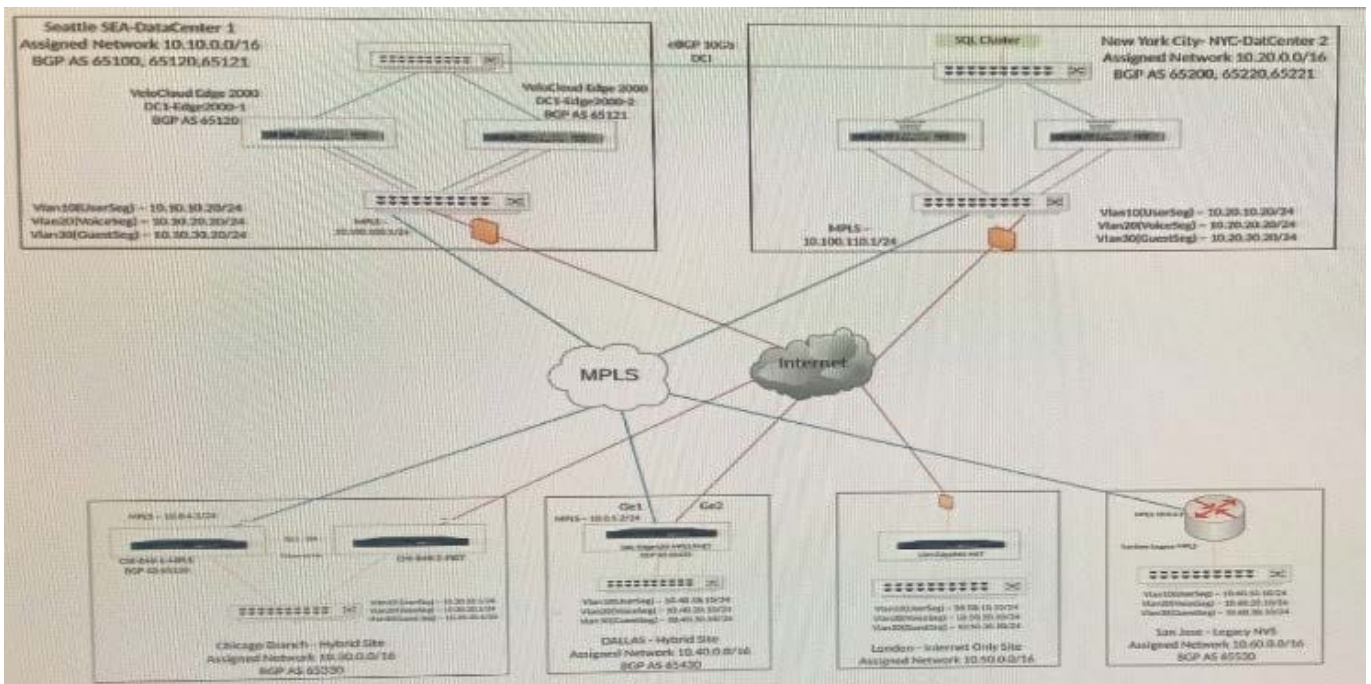
Correct Answer: A

QUESTION 3

Scenario 2:

After completing the branch activation activities for all required branches, the network administrator attempts to test connectivity between the various branches and between the hubs and branches. The administrator notices a lack of connectivity despite being certain that configurations have been complete. The administrator also observed that several users are reporting intermittent connectivity to some of the applications they are accessing. Other users are reporting no access to these applications. Other users at some of the branches claim they cannot get to certain public resources. The administrator wants to ensure that all sites can talk to each other and all resources are accessible.

Exhibit.



Several reports have come in from branch locations indicating customers cannot reach applications being served by the hub location. The hub location has a single LAN-side port from which it should be learning dynamic routes for the subnets serving the applications.

How should the technician verify if the ports on the Edge are up and working?

- A. Look under Administration and System Settings to verify if the interfaces are configured and enabled.

- B. Look in Test and Troubleshoot under the Remote Diagnostics and run Interface status.
- C. Look in Test and Troubleshoot under the Remote Actions and run System Health.
- D. Look in Test and Troubleshoot under the Remote Diagnostics and run System Health.

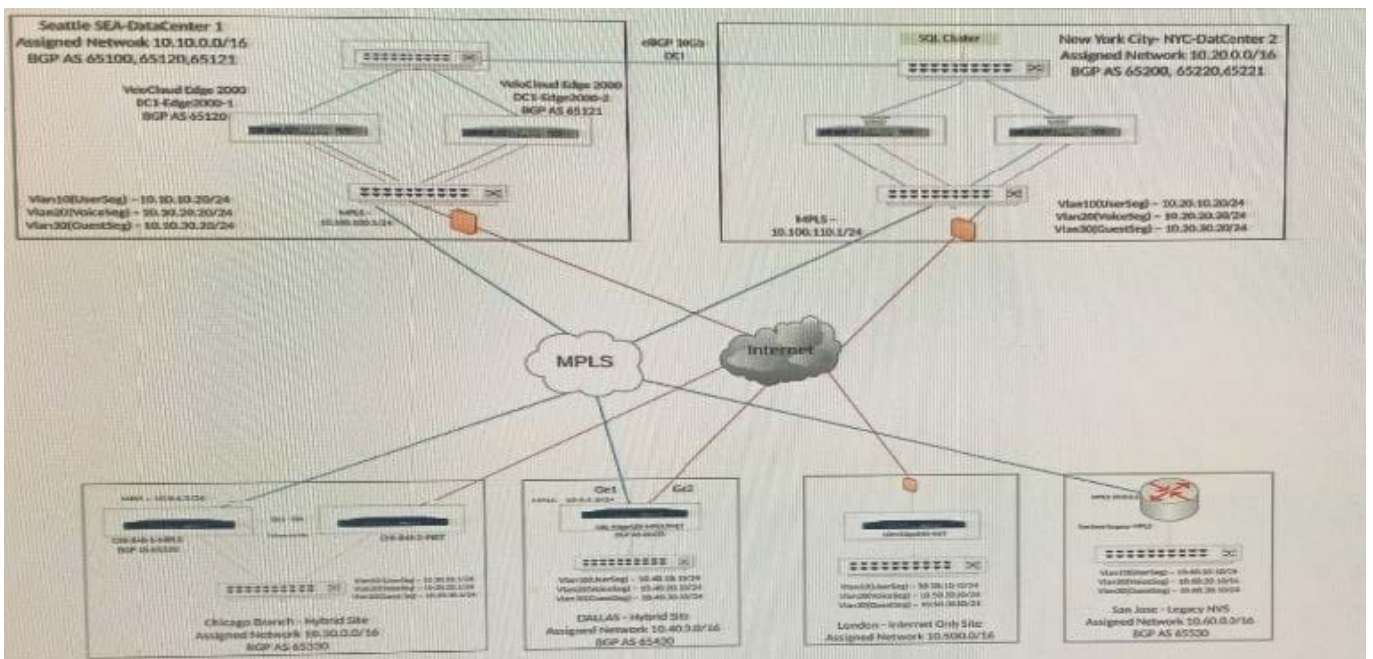
Correct Answer: B

QUESTION 4

Scenario 1:

A network administrator is tasked with enabling SD-WAN at three branch locations. A topology has been provided for reference. For each site, the administrator is having issues bringing edges online, as another administrator has gone ahead and created a configuration ahead of lime. The organization has several branch sites. One is an Internet- only site and two are Hybrid locations with both internet and MPLS. The last location is MPLS only. There are hub data center locations in this environment as well. Please refer to the topology.

Exhibit.



When attempting to activate an Edge, after clicking on the "activation link" in the email that was sent to the network administrator, the Edge's local UI shows as "Internet down". This is preventing the Edge from coming online and being activated. When referring to the output, the network administrator notices that the Edge has received DHCP addressing.

What could be preventing the Edge from coming online?

- A. The next hop does not respond to ICMP pings.
- B. Cloud VPN is not enabled in the AMER Branch profile.

- C. The subnet mask assigned to the Edge is incorrect.
- D. The Edge's profile does not specify the correct Edge Model.

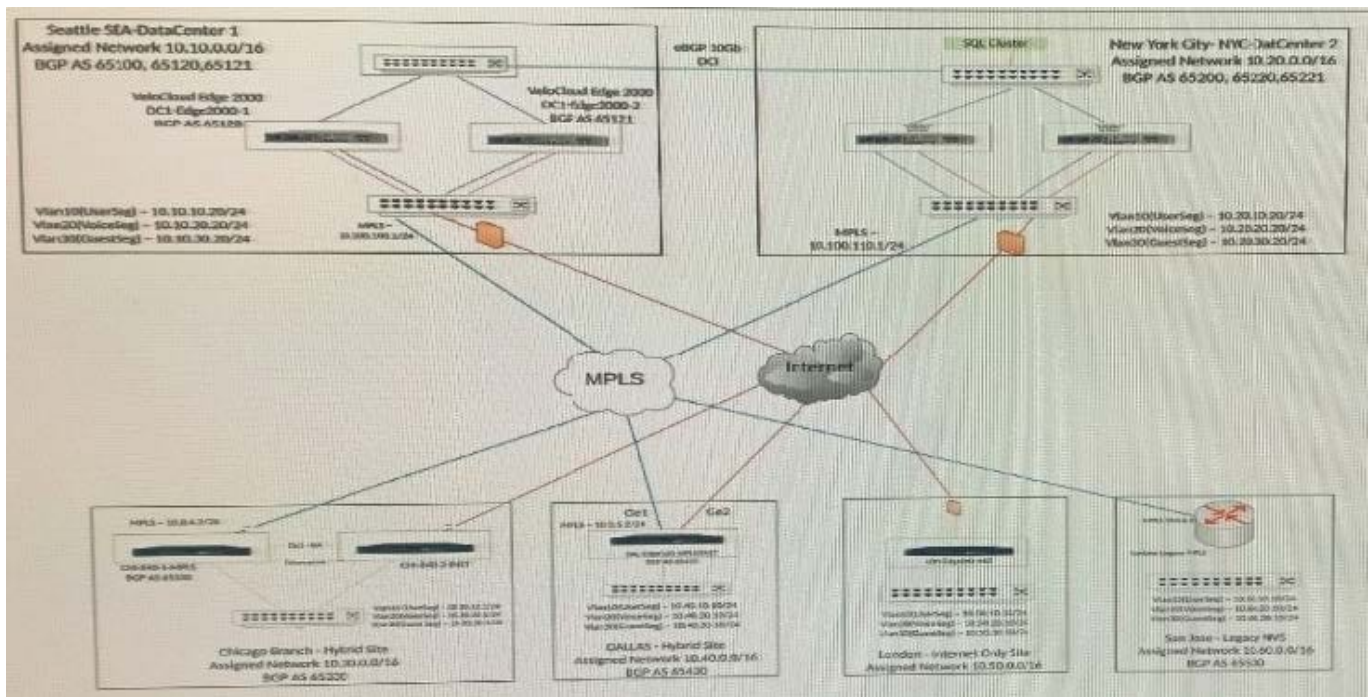
Correct Answer: A

QUESTION 5

Scenario 2:

After completing the branch activation activities for all required branches, the network administrator attempts to test connectivity between the various branches and between the hubs and branches. The administrator notices a lack of connectivity despite being cert configurations have been complete. The administrator also observed that several reporting intermittent connectivity to some of the applications they are accessing. Other users are reporting no access to these applications. Other users at some of the branches claim they cannot get to certain public resources. The administrator wants to ensure that all sites can talk to each other and all resources are accessible.

Exhibit.



A network administrator has been told that Dallas needs some high-availability in the event that the SDWANJ Edge goes offline for whatever reason. There is limited budget so the administrator must use the other available CE router as a fallback mechanism. The administrator will use VRRP to provide HA. When configuring VRRP, the SD-WAN Edge service restarted.

What caused this behavior?

- A. The administrator failed to specify the Edge Type as a VeloCloud Cluster.
- B. This is an expected behavior.

C. The device is faulty and will need a replacement.

D. The administrator failed to specify the Edge Type as a VeloCloud Active Standby Pair.

Correct Answer: B

[Latest 5V0-41.20 Dumps](#)

[5V0-41.20 PDF Dumps](#)

[5V0-41.20 Braindumps](#)