

5V0-41.20^{Q&As}

VMware SD-WAN Troubleshoot

Pass VMware 5V0-41.20 Exam with 100% Guarantee

Free Download Real Questions & Answers **PDF** and **VCE** file from:

<https://www.pass2lead.com/5v0-41-20.html>

100% Passing Guarantee
100% Money Back Assurance

Following Questions and Answers are all new published by VMware
Official Exam Center

-  **Instant Download** After Purchase
-  **100% Money Back** Guarantee
-  **365 Days** Free Update
-  **800,000+** Satisfied Customers

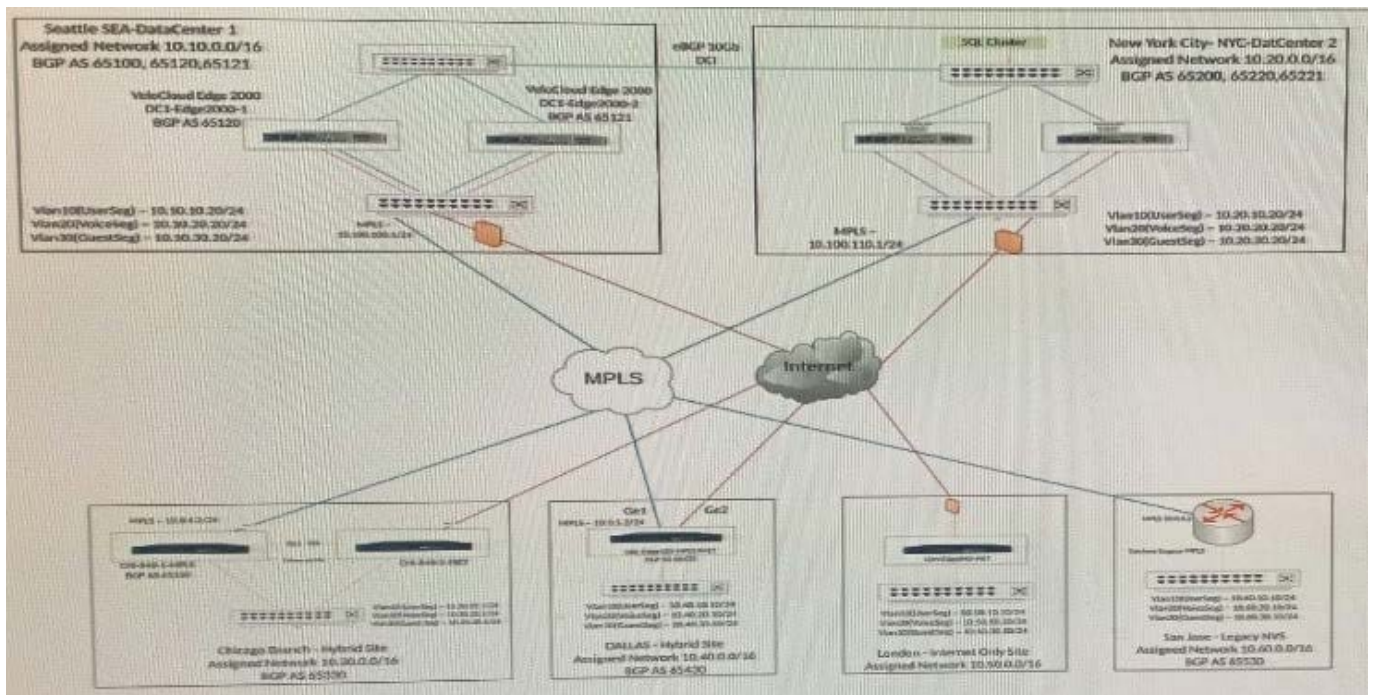


QUESTION 1

Scenario 3:

After resolving numerous connectivity issues throughout the various branch sites, connectivity between applications and users is finally present. The network administrator is informed that during certain tests, applications are not performing as they are expected to. Users report that call quality has not fully improved and that some of their calls either drop or have poor voice quality where the conversation is breaking up. Other users are noticing that file transfers are slower than expect. A group of users from a few sites have reported slowness in accessing internal and external applications.

Exhibit.



A network administrator decides to deploy a local Checkpoint VNF appliance on the Edge in London to cut back on unnecessary traffic towards the NY hub location.

The Checkpoint VNF and associated security services were successfully deployed at the London Branch. Users are now complaining that Webpages are extremely slow to load, just like before.

What should the administrator do?

- A. Reboot the Edge, as this is a requirement in the deployment of a Security VNF.
- B. Disable and redeploy the VNF with lower memory requirements.
- C. Verify to see if a firewall rule in the Edge is set to allow traffic to the Checkpoint VNF.
- D. Check the flow records in Remote Diagnostics.

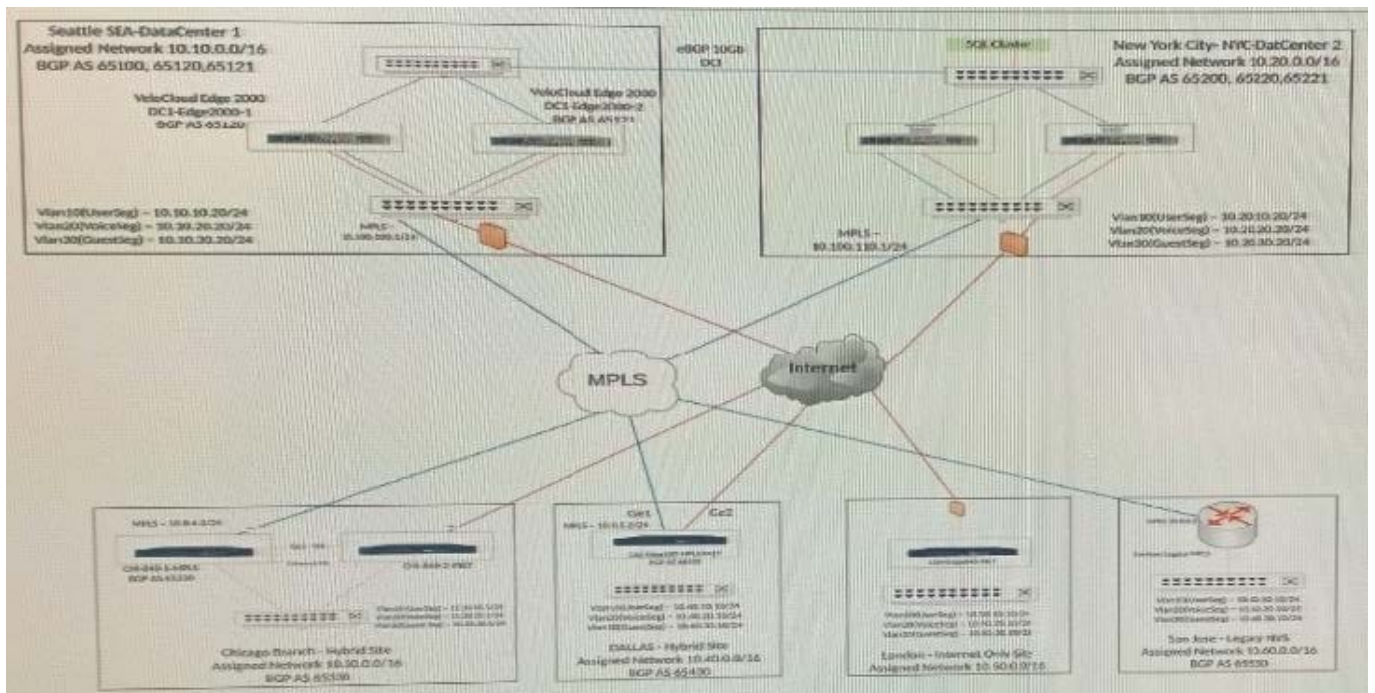
Correct Answer: B

QUESTION 2

Scenario 3:

After resolving numerous connectivity issues throughout the various branch sites, connectivity between applications and users is finally present. The network administrator is informed that during certain tests, applications are not performing as they are expected to. Users report that call quality has not fully improved and that some of their calls either drop or have poor voice quality where the conversation is breaking up. Other users are noticing that file transfers are slower than expect. A group of users from a few sites have reported slowness in accessing; internal and external applications.

Exhibit.



A network administrator is configuring several branches to prefer a single prefix, 10.20.11.0/24, from the Seattle hub over the New York hub for various application performance reasons.

What are two effective ways the administrator can accomplish this? (Choose two.)

- A. Modify the AS Path in New York to be shorter for 10.20.11.0/24.
- B. In the hub preferred order in the profile, set the Seattle hub to be preferred over New York.
- C. Modify the AS Path in New York to be longer for 10.20.11.0/24.
- D. In the OFC 10.20.11.0/24, modify the preferred exit point to be Seattle and pin the route.

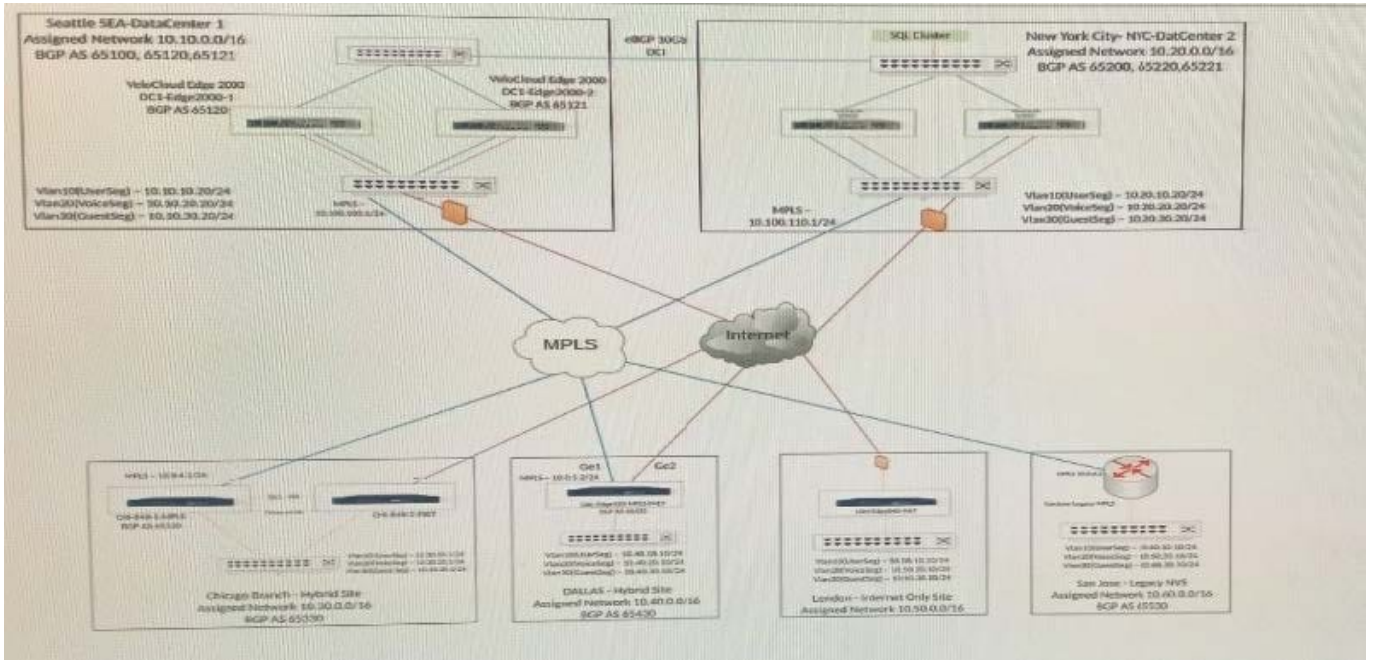
Correct Answer: BD

QUESTION 3

Scenario 2:

After completing the branch activation activities for all required branches, the network administrator attempts to test connectivity between the various branches and between the hubs and branches. The administrator notices a lack of connectivity despite being certain that configurations have been complete. The administrator also observed that several users are reporting intermittent connectivity to some of the applications they are accessing. Other users are reporting no access to these applications. Other users at some of the branches claim they cannot get to certain public resources. The administrator wants to ensure that all sites can talk to each other and all resources are accessible.

Exhibit.



A network administrator is trying to create multiple overlays on a single physical interface on an Edge. The administrator is able to bring up only a single overlay so far, but is having trouble with bringing up additional overlays.

What could be the possible reason?

- A. The administrator does not have the right permission to create multiple overlays. The administrator needs to have an Operator-level privilege for this task.
- B. On the WAN overlay configuration, verify the IP address, next-hop, and the VLAN ID configuration.
- C. The licensing does not support multiple overlays on a single physical interface.
- D. Multiple overlays cannot be created on a single physical interface. Multiple physical interfaces are needed.

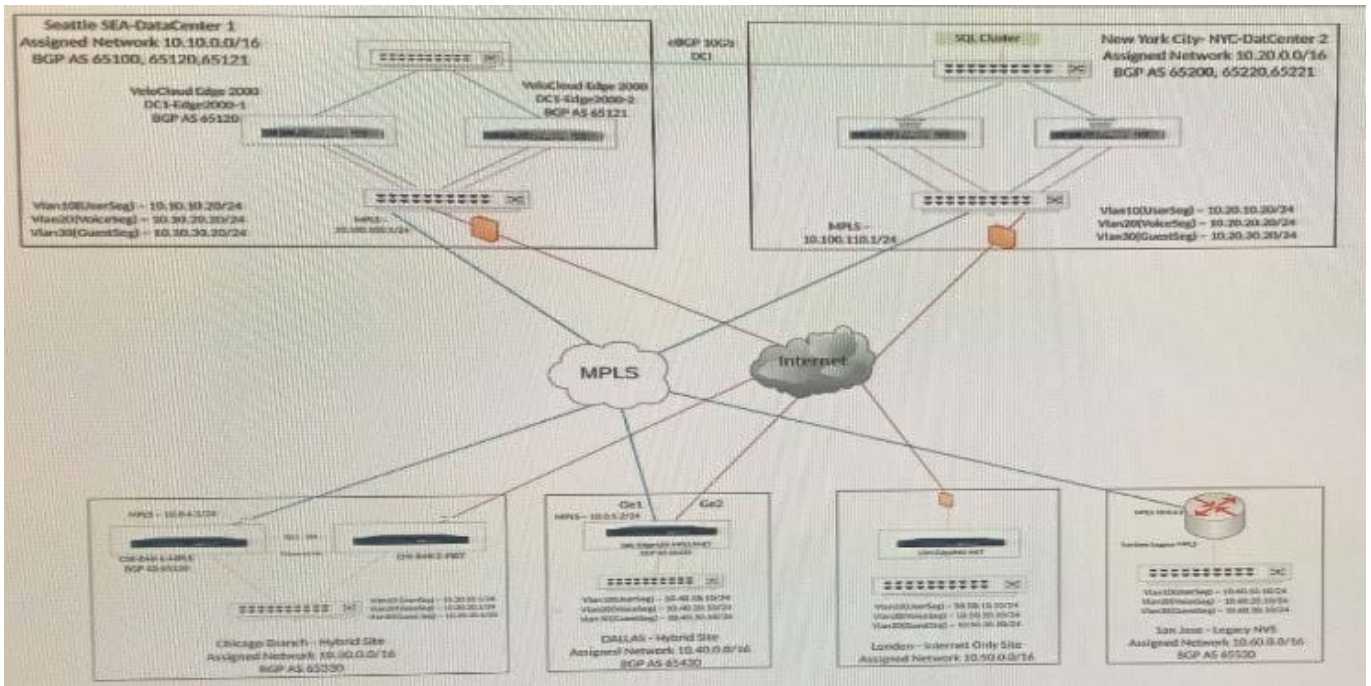
Correct Answer: A

QUESTION 4

Scenario 2:

After completing the branch activation activities for all required branches, the network administrator attempts to test connectivity between the various branches and between the hubs and branches. The administrator notices a lack of connectivity despite being certain that configurations have been complete. The administrator also observed that several users are reporting intermittent connectivity to some of the applications they are accessing. Other users are reporting no access to these applications. Other users at some of the branches claim they cannot get to certain public resources. The administrator wants to ensure that all sites can talk to each other and all resources are accessible.

Exhibit.



Several reports have come in from branch locations indicating customers cannot reach applications being served by the hub location. The hub location has a single LAN-side port from which it should be learning dynamic routes for the subnets serving the applications.

How should the technician verify if the ports on the Edge are up and working?

- A. Look under Administration and System Settings to verify if the interfaces are configured and enabled.
- B. Look in Test and Troubleshoot under the Remote Diagnostics and run Interface status.
- C. Look in Test and Troubleshoot under the Remote Actions and run System Health.
- D. Look in Test and Troubleshoot under the Remote Diagnostics and run System Health.

Correct Answer: B

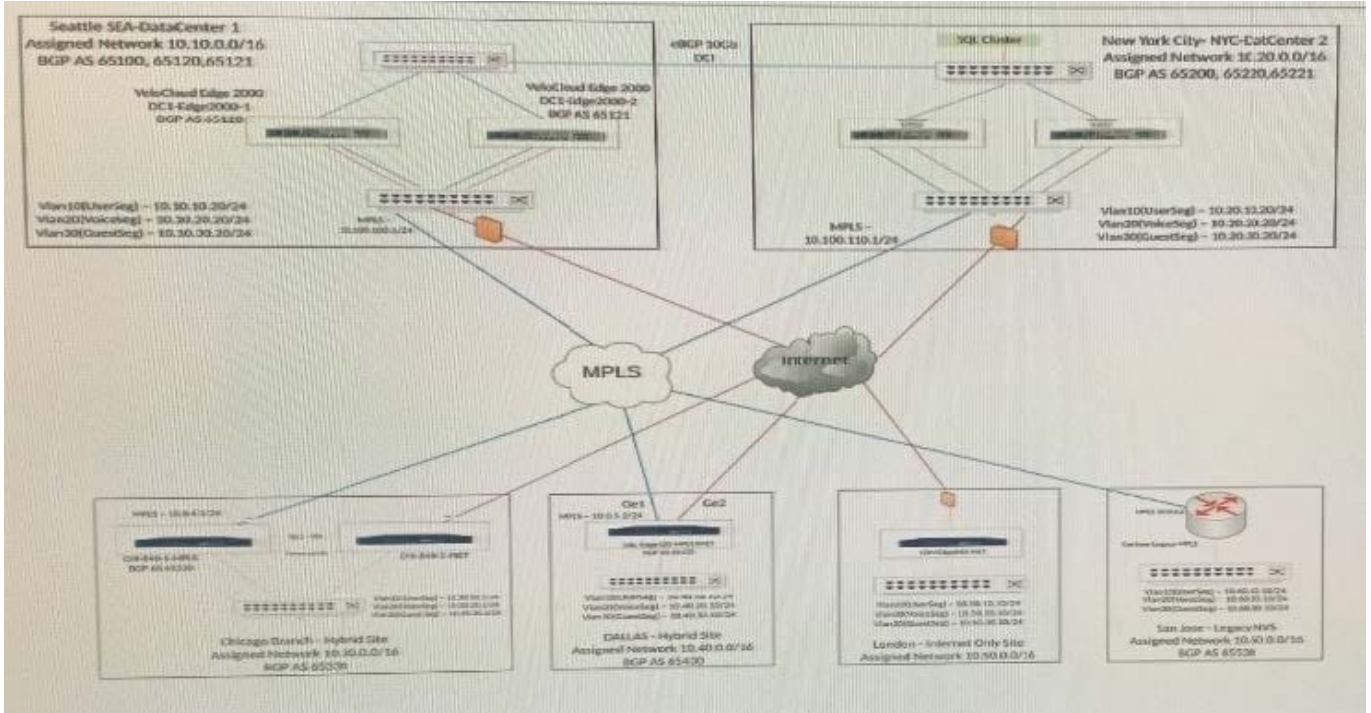
QUESTION 5

Scenario 3:

After resolving numerous connectivity issues throughout the various branch sites, connectivity between applications and

users is finally present. The network administrator is informed that during certain tests, applications are not performing as they are expected to. Users report that call quality has not fully improved and that some of their calls either drop or have poor voice quality where the conversation is breaking up. Other users are noticing that file transfers are slower than expect. A group of users from a few sites have reported slowness in accessing internal and external applications.

Exhibit.



Users at the Dallas Branch are complaining that downloads/uploads from Office365 are slow. Working in Teams has been providing slow responses. The Internet circuit is 100Mbps while the MPLS Circuit is 45Mbps. Upon troubleshooting, the network administrator has noticed the traffic is Backhauling through the Seattle hub for all internet traffic.

How should the network administrator resolve the issue?

- A. Leave the system as is, the gateways will resolve the issues after doing 15 minutes of link qualification.
- B. Advertise public routes to Office365 and Teams through the New York Hub.
- C. Leave the system as is, the hubs will auto-rebalance tunnels after doing 15 minutes of link qualification.
- D. Prevent the hub from advertising a default route.

Correct Answer: B

[5V0-41.20 Practice Test](#)

[5V0-41.20 Exam Questions](#)

[5V0-41.20 Braindumps](#)