

600-660^{Q&As}

Implementing Cisco Application Centric Infrastructure - Advanced

Pass Cisco 600-660 Exam with 100% Guarantee

Free Download Real Questions & Answers **PDF** and **VCE** file from:

<https://www.pass2lead.com/600-660.html>

100% Passing Guarantee
100% Money Back Assurance

Following Questions and Answers are all new published by Cisco
Official Exam Center

- ⚙️ **Instant Download** After Purchase
- ⚙️ **100% Money Back** Guarantee
- ⚙️ **365 Days** Free Update
- ⚙️ **800,000+** Satisfied Customers



QUESTION 1

What is a use of the Overlay Multicast TEP in Cisco ACI Multi-Site communication?

- A. to perform headend replication
- B. to act as the source IP for BUM traffic
- C. to establish MP-BGP adjacencies with remote spines
- D. to send and receive unicast VXLAN data plane traffic

Correct Answer: B

Reference: <https://www.cisco.com/c/en/us/solutions/collateral/data-center-virtualization/application-centric-infrastructure/white-paper-c11-739609.html#CiscoACIMultiSiteoverlaydataplane>

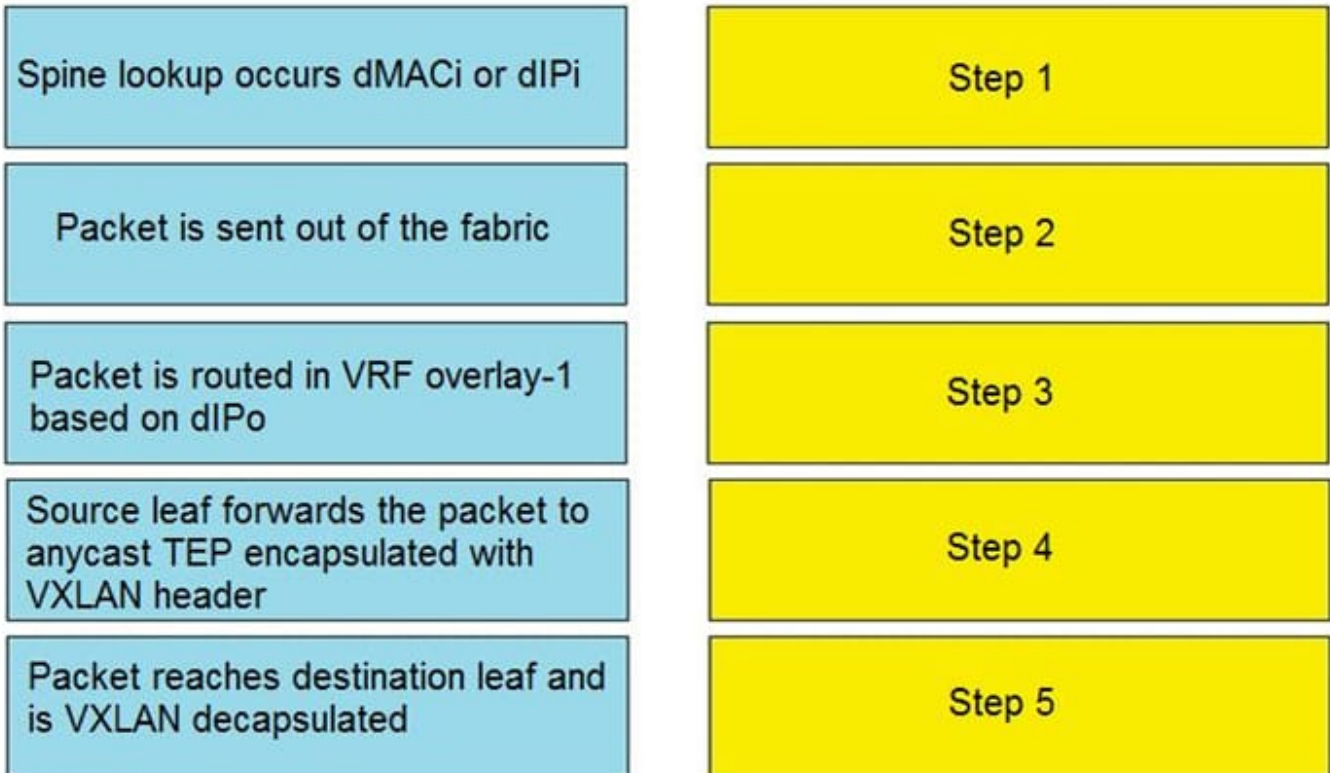
QUESTION 2

DRAG DROP

A leaf receives unicast traffic that is destined to an unknown source, and spine proxy is enabled in the corresponding bridge domain. Drag and drop the Cisco ACI forwarding operations from the left into the order the operation occurs on the right.

Select and Place:

Answer Area



Correct Answer:

Answer Area

- Source leaf forwards the packet to anycast TEP encapsulated with VXLAN header
- Spine lookup occurs dMACi or dIPi
- Packet is sent out of the fabric
- Packet reaches destination leaf and is VXLAN decapsulated
- Packet is routed in VRF overlay-1 based on dIPo

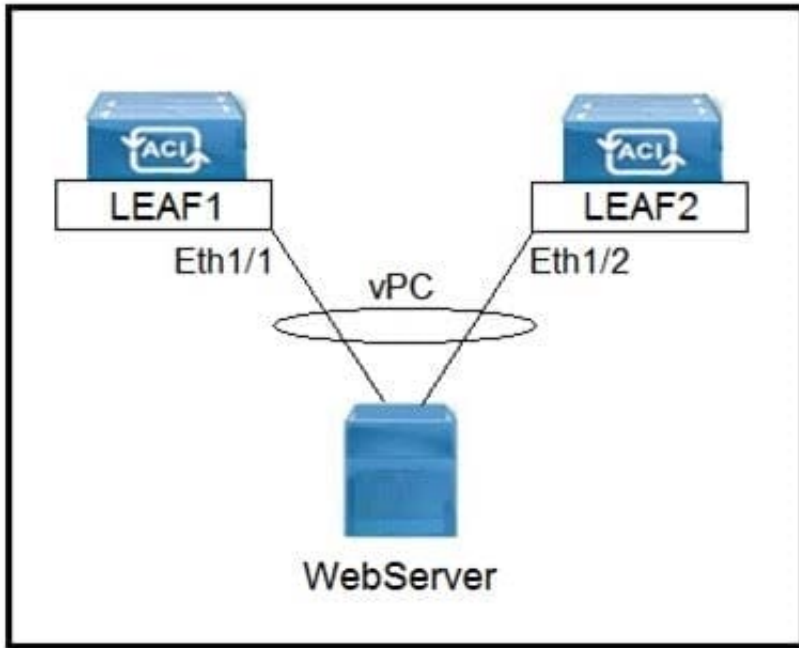
QUESTION 3

What are two characteristics of network-centric design in Cisco ACI? (Choose two.)

- A. There is open communication between EPGs
- B. EPGs are used for microsegmentation
- C. EPGs are different security zones
- D. Applications define the network requirements
- E. A bridge domain has one subnet and one EPG

Correct Answer: BE

QUESTION 4



Refer to the exhibit. Which three actions should be taken to implement the vPC in the Cisco ACI fabric? (Choose three.)

- A. Select a common vPC interface policy group
- B. Select individual interface profiles
- C. Select common interface profiles
- D. Select individual switch profiles
- E. Select common switch profiles

Correct Answer: ABE

QUESTION 5

What is the purpose of the Forwarding Tag (FTAG) in Cisco ACI?

- A. FTAG is used in Cisco ACI to add a label to the iVXLAN traffic in the fabric to apply the correct policy.
- B. FTAG is used in Cisco ACI to add a label to the VXLAN traffic in the fabric to apply the correct policy.
- C. FTAG trees in Cisco ACI are used to load balance unicast traffic.
- D. FTAG trees in Cisco ACI are used to load balance mutli-destination traffic.

Correct Answer: D

Reference: https://www.cisco.com/c/en/us/td/docs/switches/datacenter/aci/apic/sw/1-x/aci-fundamentals/b_ACI-Fundamentals/b_ACI-Fundamentals_chapter_010010.html#concept_1E8BF286E1C043EF839D80935FDF9F50

[Latest 600-660 Dumps](#)

[600-660 PDF Dumps](#)

[600-660 VCE Dumps](#)