

600-660^{Q&As}

Implementing Cisco Application Centric Infrastructure - Advanced

Pass Cisco 600-660 Exam with 100% Guarantee

Free Download Real Questions & Answers **PDF** and **VCE** file from:

<https://www.pass2lead.com/600-660.html>

100% Passing Guarantee
100% Money Back Assurance

Following Questions and Answers are all new published by Cisco
Official Exam Center

- ⚙️ **Instant Download** After Purchase
- ⚙️ **100% Money Back** Guarantee
- ⚙️ **365 Days** Free Update
- ⚙️ **800,000+** Satisfied Customers



QUESTION 1

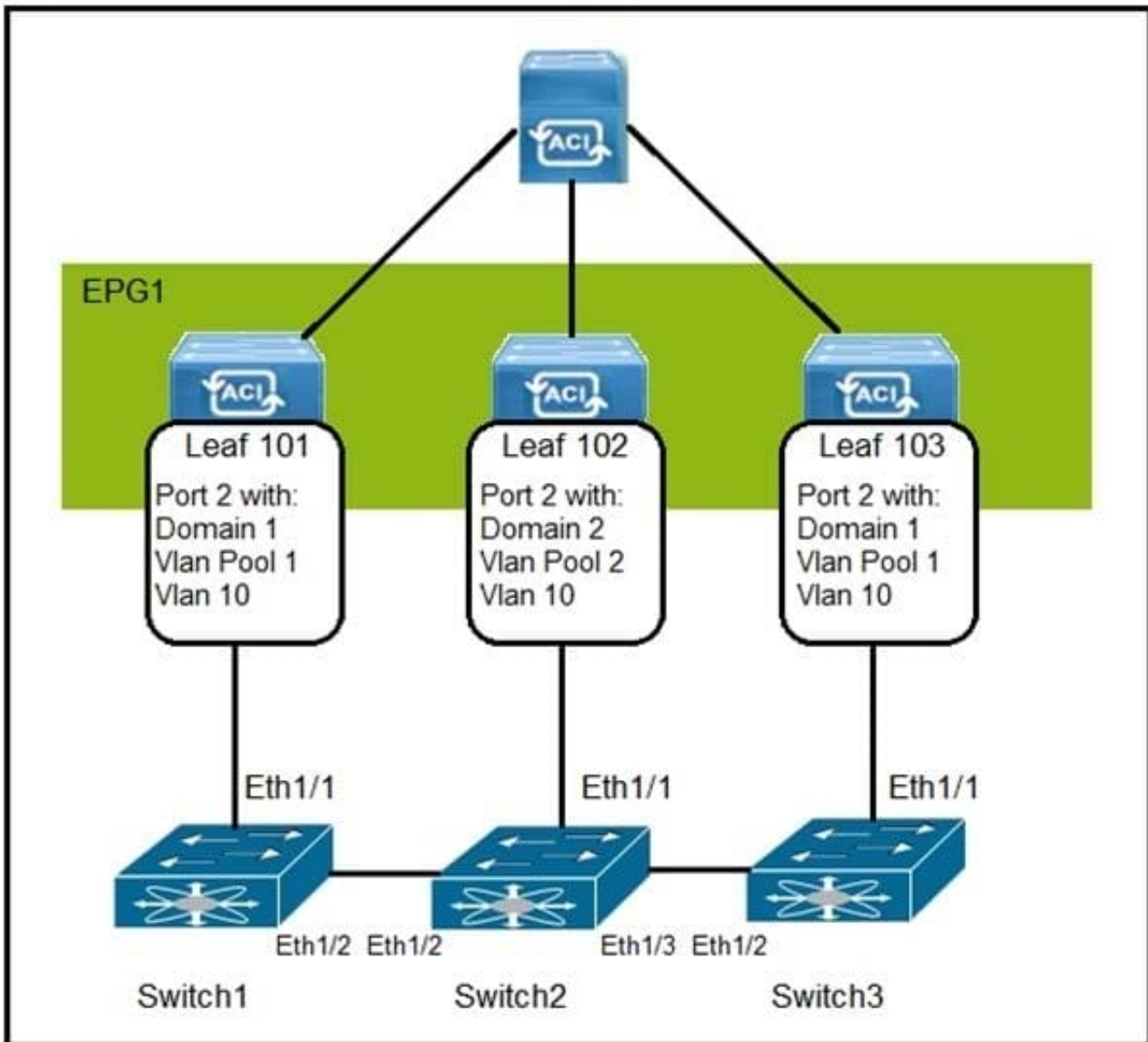
What does the VXLAN source port add to the overlay packet forwarding when it uses the hash of Layer 2, Layer 3, and Layer 4 headers of the inner packet?

- A. ECMP
- B. TCP optimization
- C. disabled fragmentation
- D. jumbo frames

Correct Answer: A

Reference: <https://www.cisco.com/c/en/us/support/docs/lan-switching/vlan/212682-virtual-extensible-lan-and-ethernet-virt.html>

QUESTION 2



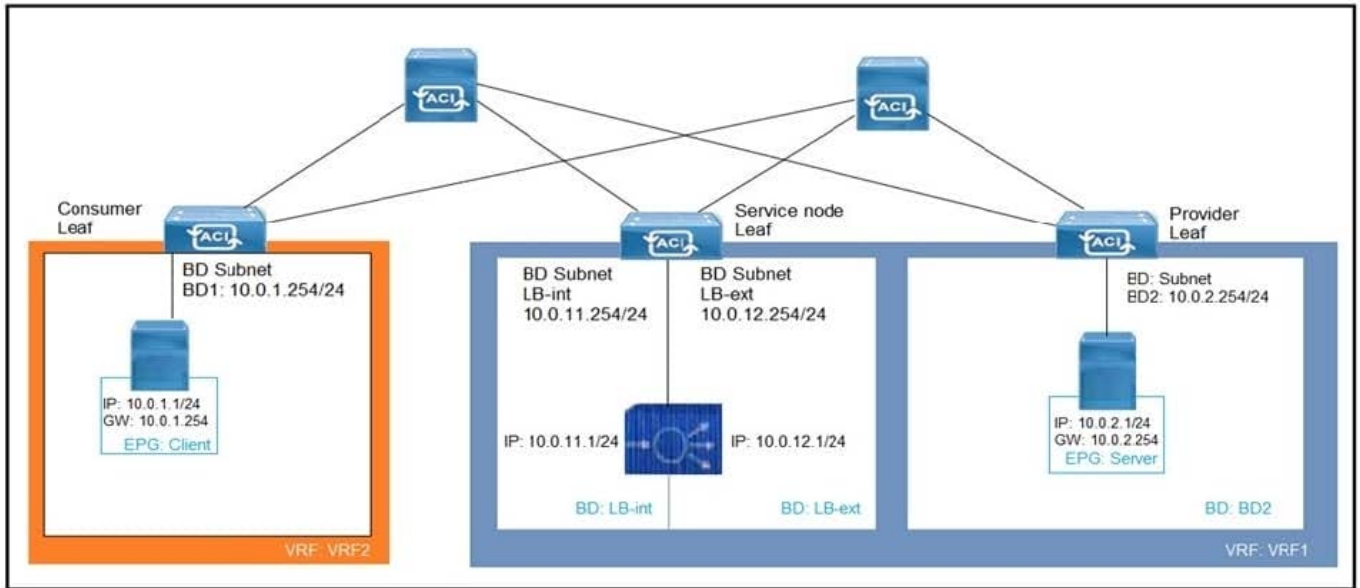
Refer to the exhibit. How are the STP BPDUs forwarded over Cisco ACI fabric?

- A. STP BPDUs that are generated by Switch2 are received by Switch1 and Switch3.
- B. Cisco ACI fabric drops all STP BPDUs that are generated by the external switches.
- C. Cisco ACI acts as the STP root for all three external switches.
- D. STP BPDUs that are generated by Switch1 are received only by Switch3.

Correct Answer: A

Reference: <https://www.linkedin.com/pulse/cisco-aci-network-behaviour-stptcn-how-identify-loop-ankit-kulshresta>

QUESTION 3



Refer to the exhibit. What must be configured to allow the PBR node (LB-int) to monitor the availability of the endpoint that is in the EPG server?

- A. Endpoint Dataplane Learning
- B. Unicast Route disabled for client and server bridge domains
- C. PBR node tracking
- D. Direct Connect in the service graph template

Correct Answer: A

QUESTION 4

Where are STP BPDUs flooded in Cisco ACI fabric?

- A. in the bridge domain VLAN
- B. in the native VLAN ID
- C. in the access encapsulation VLAN part of different VLAN pools
- D. in the VNID that is assigned to the FD VLAN

Correct Answer: A

Reference: <https://www.cisco.com/c/en/us/solutions/collateral/data-center-virtualization/application-centric-infrastructure/white-paper-c11-737909.html>

QUESTION 5

In a Cisco ACI Multi-Site fabric, the Inter-Site BUM Traffic Allow option is enabled in a specific stretched bridge domain.

What is used to forward BUM traffic to all endpoints in the same broadcast domain?

- A. ingress replication on the spines in the source site
- B. egress replication on the source leaf switches
- C. egress replication on the destination leaf switches
- D. ingress replication on the spines in the destination site

Correct Answer: D

Reference: <http://yves-louis.com/DCI/?p=1277>

[600-660 Study Guide](#)

[600-660 Exam Questions](#)

[600-660 Braindumps](#)