

# 6103<sup>Q&As</sup>

Avaya ERS 8000 and Avaya VSP 9000 Implementation Exam

## Pass Avaya 6103 Exam with 100% Guarantee

Free Download Real Questions & Answers **PDF** and **VCE** file from:

<https://www.pass2lead.com/6103.html>

100% Passing Guarantee  
100% Money Back Assurance

Following Questions and Answers are all new published by Avaya  
Official Exam Center

-  **Instant Download** After Purchase
-  **100% Money Back** Guarantee
-  **365 Days** Free Update
-  **800,000+** Satisfied Customers



**QUESTION 1**

Given the following command:

```
VSP-9012:1S show khi performance
```

Which Key Health Indicator is only valid for the CP modules?

- A. CPU
- B. buffer-pool
- C. error-count
- D. process
- E. memory

Correct Answer: A

---

**QUESTION 2**

A technician has implemented RSMLT edge design. After recovering from a power outage, some clients could not communicate. It has been determined that only one of the core RSMLT switches has recovered.

What should have been done to prevent the loss of communications?

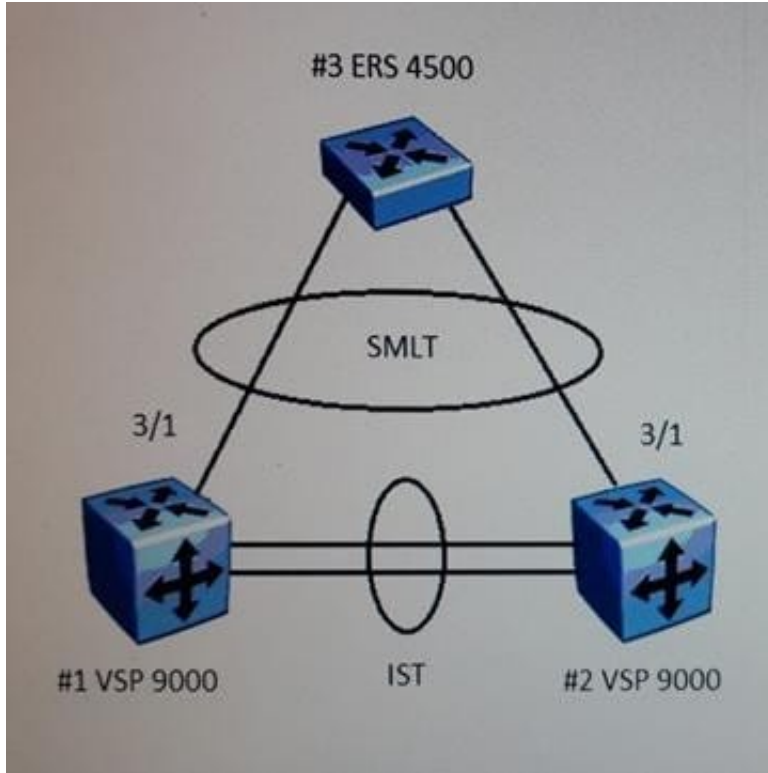
- A. Turn off the HoldDown timer.
- B. RSMLT-Edge needs to be enabled globally.
- C. Clear the peer IP and MAC addresses.
- D. Set the VLAN to copy RSMLT info from a similarly configured VLAN.

Correct Answer: C

---

**QUESTION 3**

Refer to the exhibit.



Simple Loop Prevention Protocol (SLPP) provides active protection against Layer 2 network loops on a per-VLAN basis. For the SLPP Tx process, the network administrator decides on which VLANs to enable SLPP. The hello packets are then replicated out all ports that are members of the SLPP-enabled VLAN.

Given the following information shown in the exhibit: A = InterSwitch Trunk (IST) B = Split MultiLink Trunk (SMLT) # 1 VSP 9000 # 2 VSP 9000 # 3 ERS 4500

When setting up the SLPP Rx process, which configuration role is setup on VSP #1?

- A. The VSP #1 Rx process is enabled on all SMLT VLANs to monitor for the ERS #3 SLPP packets.
- B. The VSP #1 Rx process is enabled on port 3/1 and the IST ports to monitor for the VSP #2 SLPP packets.
- C. The VSP # 1 Rx process is enabled on all SMLT VLANs to monitor for the VSP # 2 SLPP packets.
- D. The VSP # 1 RX process is enabled on port 3/1 to monitor VSP # 1 and VSP #2 SLPP packets.

Correct Answer: B

#### QUESTION 4

After issuing a show mlt ist stats (CLI) or show ist stat (ACLI) command, it is determined that the running type is normal MLT and not IST.

What are two causes of the IST not running properly? (Choose two.)

- A. The MLT ID does not match on both switches.
- B. The IST is not enabled on both switches.

- C. The peer IP addresses have to be 192.168.1.1/30 and 19 2.168.1.2/30.
- D. The peer IP address is not the address of the peer switch IST VLAN.

Correct Answer: BD

#### QUESTION 5

Refer to the exhibit.

```
VSP-9012:1#flight-recorder all 1
Processing Flight-recorder snapshot for 1 ...

Flight-recorder snapshot for slot 1 complete,
20111019114431.1.bin.gz.

Processing Flight-recorder trace for 1 ....

Flight-recorder trace for slot 1 complete, fi.
0111019114434.1.txt.

Processing Flight-recorder archive for slot 1

Flight-recorder archive for slot 1 complete, :
hive.20111019114446.1.tar.
```

While troubleshooting your VSP 9000 system, you run the command flight-recorder all

1. The associated files are created.

Based on the information in the exhibit, where are the associated files stored?

- A. Internal flash
- B. TFTP Server
- C. External flash
- D. USB Flash device

Correct Answer: A