



642-427^{Q&As}

Troubleshooting Cisco Unified Communications v8.0 (TVOICE v8.0)

Pass Cisco 642-427 Exam with 100% Guarantee

Free Download Real Questions & Answers **PDF** and **VCE** file from:

<https://www.pass4lead.com/642-427.html>

100% Passing Guarantee
100% Money Back Assurance

Following Questions and Answers are all new published by Cisco
Official Exam Center

-  **Instant Download** After Purchase
-  **100% Money Back** Guarantee
-  **365 Days** Free Update
-  **800,000+** Satisfied Customers



**QUESTION 1**

Echo is always present to some extent in all voice networks. For echo to be a problem, which three conditions must exist? (Choose three.)

- A. analog leakage between analog Tx and Rx paths
- B. sufficient echo amplitude to be perceived as annoying
- C. sufficient power from the talker's side to cause listener echo
- D. sufficient delay in echo return for echo to be perceived as annoying
- E. an analog two-wire to four-wire hybrid operating below 600 ohm impedance

Correct Answer: ABD

QUESTION 2

After you provision a new H.323 gateway to integrate with a Cisco Unified Communications Manager cluster, you see that the H.323 gateway shows unregistered in Cisco Unified CM. Which action is needed to register the H.323 gateway with Cisco Unified Communications Manager?

- A. H.323 gateways never register with Cisco Unified Communications Manager. No action is required to address the unregistered state of the H.323 gateway with Cisco Unified CM.
- B. Create a VoIP dial peer on the H.323 gateway to point to the Cisco Unified Communications Manager cluster.
- C. H.323 gateways must use a loopback address to register to a Cisco Unified Communications Manager cluster.
- D. Stop and restart the Cisco Call Manager service.

Correct Answer: A

QUESTION 3

Which statement about device mobility is true?

- A. When local route groups are used, there is no need to configure device mobility groups or phone device CSSs as long as phone line CSSs are used.
- B. When local route groups are used, you must configure device mobility groups and phone device CSSs.
- C. When the device mobility group at the home device pool and roaming device pool are not the same, the Phone will keep the home region.
- D. When device mobility groups at the home device pool and roaming device pool are the same, the phone will keep the



home MRGL setting.

Correct Answer: A

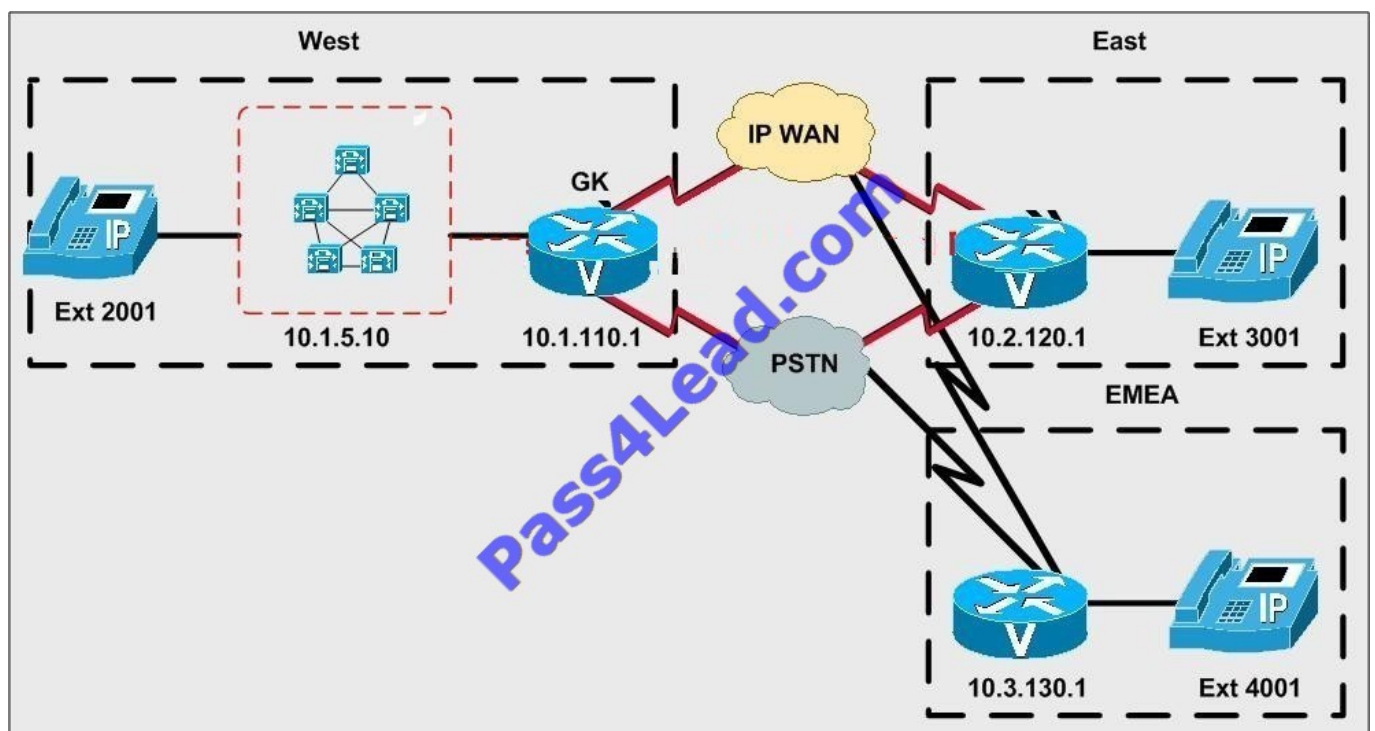
QUESTION 4

Look at the following exhibit carefully.

You can click on the GK icon to view the output of the show gatekeeper endpoint command and click on each voice gateway to view the interface configuration. X of each popup can be clicked to back to the item.

As a network technician, you are recently responsible for configuring a gatekeeper with three local zones called East, West and EMEA. You have accomplished this task. In the East and EMEA zones, CallManager and the gateways are all

registered in the West Zone, however, each of them should be registered in their own zone. In order to fix this issue, which measure should you take?



- A. The gatekeeper needs to be stopped and restarted for the changes to take effect.
- B. The IP address in the gateway command h323-gateway voip ID needs to be changed to that of the individual gateways in both gateways.
- C. The zone name in the gateway command h323-gateway voip ID needs to be changed to the correct zone in both gateways.
- D. The gatekeeper can only support one zone and all registering endpoints are being placed correctly in the first configured zone.



Correct Answer: C

QUESTION 5

Refer to the Exhibit.

```
voice service saf
profile trunk-route 1
  session protocol sip interface Loopback1 transport tcp port 5060
|
profile dn-block 1
  pattern 1 type global 1408[2-9]XXXXXX
|
profile callcontrol 1
  dn-service
  trunk-route 1
  dn-block 1
|
channel 1 vrouter SAF asystem 1
  subscribe callcontrol wildcarded
  publish callcontrol 1
```

When a Cisco Unified Communications Manager Express advertises directory number pattern in the exhibit. What would the learned pattern be in the RTMT tool on the Cisco Unified Communication Manager?

- A. \+1408[2-9]XXXXXX and the ToDID will be 0:
- B. 1408[2-9]XXXXXX and the ToDID will be 0:+1408[2-9]XXXXXX
- C. \+1408[2-9]XXXXXX and the ToDID will be 0:+1408[2-9]XXXXXX
- D. \+1408[2-9]XXXXXX and the ToDID will be empty
- E. [2-9] XXXXXX and the ToDID will be 0:+1408[2-9]XXXXXX

Correct Answer: D



To Read the [Whole Q&As](#), please purchase the [Complete Version](#) from [Our website](#).

Try our product !

100% Guaranteed Success

100% Money Back Guarantee

365 Days Free Update

Instant Download After Purchase

24x7 Customer Support

Average 99.9% Success Rate

More than 800,000 Satisfied Customers Worldwide

Multi-Platform capabilities - [Windows](#), [Mac](#), [Android](#), [iPhone](#), [iPod](#), [iPad](#), [Kindle](#)

We provide exam PDF and VCE of Cisco, Microsoft, IBM, CompTIA, Oracle and other IT Certifications. You can view Vendor list of All Certification Exams offered:

<https://www.pass4lead.com/allproducts>

Need Help

Please provide as much detail as possible so we can best assist you.

To update a previously submitted ticket:



 <p>One Year Free Update Free update is available within One Year after your purchase. After One Year, you will get 50% discounts for updating. And we are proud to boast a 24/7 efficient Customer Support system via Email.</p>	 <p>Money Back Guarantee To ensure that you are spending on quality products, we provide 100% money back guarantee for 30 days from the date of purchase.</p>	 <p>Security & Privacy We respect customer privacy. We use McAfee's security service to provide you with utmost security for your personal information & peace of mind.</p>
---	---	--

Any charges made through this site will appear as Global Simulators Limited.

All trademarks are the property of their respective owners.

Copyright © pass4lead, All Rights Reserved.