



642-515^{Q&As}

Securing Networks with ASA Advanced

Pass Cisco 642-515 Exam with 100% Guarantee

Free Download Real Questions & Answers **PDF** and **VCE** file from:

<https://www.pass4lead.com/642-515.html>

100% Passing Guarantee
100% Money Back Assurance

Following Questions and Answers are all new published by Cisco
Official Exam Center

-  **Instant Download** After Purchase
-  **100% Money Back** Guarantee
-  **365 Days** Free Update
-  **800,000+** Satisfied Customers



**QUESTION 1**

Which three encapsulation types will be supported by the Cisco ASA security appliance for IPsec NAT transparency? (Choose three.)

- A. NAT-T
- B. IPsec over TCP
- C. IPsec over UDP
- D. IPsec over PPTP
- E. L2TP over IPsec
- F. IPsec over GRE

Correct Answer: ABC

QUESTION 2

Recently, a branch office of your company has upgraded its network by changing the network topology of the branch, and the site-to-site VPN tunnel that runs between the branch and the corporate office has been reconfigured to perform Reverse Route Injection to accommodate the recent change. You are performing OSPF between the corporate Cisco ASA security appliance and routers on the internal network. Assume that the VPN configuration is correct, which step will be taken on the corporate Cisco ASA security appliance to make sure that these new routes are visible to internal routers running OSPF?

- A. Reverse Route Injection uses RIP, so you must add a RIP process and redistribute the learned RIP routes into OSPF.
- B. Reverse Route Injection requires that you configure a new OSPF process that will add these routes to the Cisco ASA security appliance routing table.
- C. Reverse Route Injection uses static routes, so you must configure OSPF to redistribute the static routes.
- D. Reverse Route Injection uses EIGRP, so you must add an EIGRP process and redistribute the learned EIGRP routes into OSPF.
- E. Reverse route injection requires that you add a static route for each branch-office network to the Cisco ASA security appliance routing table.

Correct Answer: C

QUESTION 3

Refer to the exhibit. The HTTP inspection map named MY_HTTP_MAP is applied to the outside interface of the security appliance.

As a result of this configuration, which action does the security appliance take on HTTP traffic entering its outside interface? NOTE: The CLI version of this configuration is provided here.



```
regex URL_ABC ".+abc\.com"
```

```
regex URL_DEF ".+def\.com"
```

```
regex URL_XYZ ".+xyz\.com"
```

```
[. . .]
```

```
class-map OUTSIDE_CLASS
```

```
match any
```

```
class-map type regex match-any URLs
```

```
match regex URL_ABC
```

```
match regex URL_XYZ
```

```
class-map type inspect http match-all
```

```
RESTRICTED_HTTP
```

```
match request body length gt 1000
```

```
match not request uri regex class URLs
```

```
[. . .]
```

```
policy-map type inspect http MY_HTTP_MAP
```

```
parameters
```

```
protocol-violation action drop-connection
```

```
class RESTRICTED_HTTP
```

```
drop-connection
```

```
policy-map OUTSIDE_POLICY
```

```
class OUTSIDE_CLASS
```

```
inspect http MY_HTTP_MAP
```

```
[. . .]
```

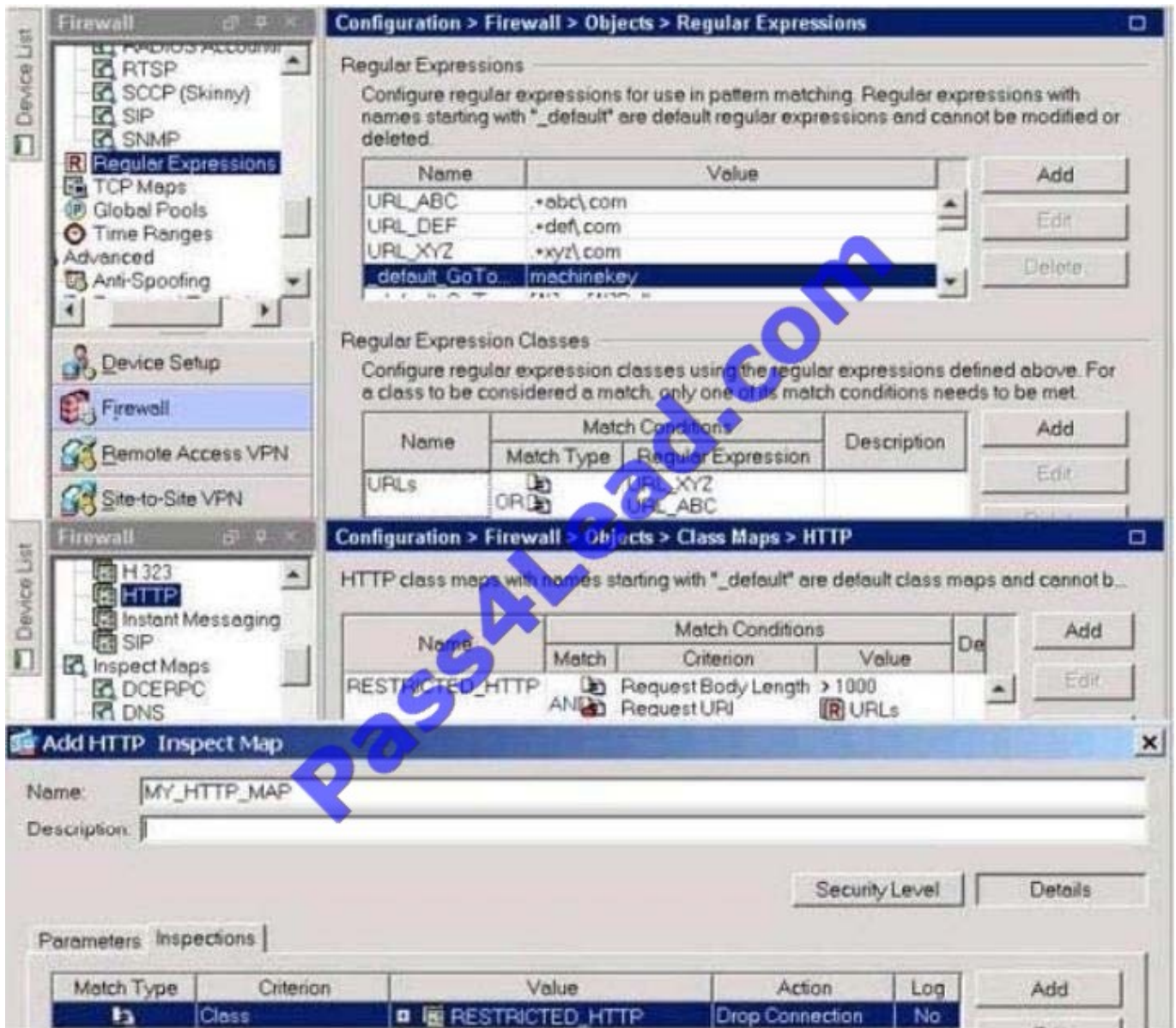
```
service-policy OUTSIDE_POLICY interface outside
```



The screenshot displays the Cisco Firewall configuration interface, divided into three main sections:

- Configuration > Firewall > Objects > Regular Expressions:** This section allows for defining regular expressions. It includes a table with columns for Name and Value. The table contains three entries: URL_ABC with value *.abc.com, URL_DEF with value *.def.com, and URL_XYZ with value *.xyz.com. A 'default_GoTo...' entry is also visible with value machinekey. Buttons for Add, Edit, and Delete are provided.
- Configuration > Firewall > Objects > Class Maps > HTTP:** This section is for configuring HTTP class maps. It includes a table with columns for Name, Match Conditions, and Description. The table shows a class map named RESTRICTED_HTTP with match conditions: Request Body Length > 1000 and Request URI matching the URL_XYZ and URL_ABC regular expressions. Buttons for Add and Edit are present.
- Add HTTP Inspect Map:** This dialog box is used to create a new inspect map. The Name field is filled with 'MY_HTTP_MAP'. Below the Name field, there are tabs for Parameters and Inspections. The Inspections tab is active, showing a table with columns for Match Type, Criterion, Value, Action, and Log. The table contains one entry: Match Type is Class, Criterion is RESTRICTED_HTTP, Value is Drop Connection, and Log is No.

Exhibit:



- A. Drops any HTTP packet that is destined for def.com and has a header length greater than 1000 bytes
- B. Drops any HTTP packet destined for abc.com that has a header length greater than 1000 bytes
- C. Drops any HTTP request for xyz.com that has a body length greater than 1000 bytes
- D. Drops any HTTP request for def.com that has a body length greater than 1000 bytes
- E. Drops any HTTP packet that is destined for abc.com or has a body length greater than 1000 bytes
- F. Drops any HTTP request that is destined for xyz.com or has a header length greater than 1000 bytes

Correct Answer: D

QUESTION 4



Refer to the exhibit. What does Reverse Route Injection enable in this configuration?

Pass4Lead.com

- A. The Cisco ASA security appliance will advertise routes that are at the distant end of the site-to-site VPN tunnel.
- B. The Cisco ASA security appliance will advertise its default routes to the distant end of the site-to-site VPN tunnel.
- C. The Cisco ASA security appliance will advertise routes that are on its side of the site-to-site VPN tunnel to the distant end of the site-to-site VPN tunnel.
- D. The Cisco ASA security appliance will advertise routes from the dynamic routing protocol that is running on the Cisco ASA security appliance to the distant end of the site-to-site VPN tunnel.

Correct Answer: A

QUESTION 5

Refer to the exhibit. You have configured a Layer 7 policy map to match the size of HTTP header fields that are traversing the network. Based on this configuration, will HTTP headers that are greater than 200 bytes be logged?



```
policy-map type inspect http TEST
  parameters
  match request header length gt 100
    reset
  match request header length gt 200
    log
```

- A. No, because the reset action for headers greater than 100 bytes would be the first match.
- B. Yes, because the log action for headers greater than 200 bytes would be the last match.
- C. Yes, because the reset action for headers greater than 100 bytes and the log action for headers greater than 200 bytes would both be applied.
- D. No, because reset or log actions are a part of the service policy and the Layer 7 policy map.

Correct Answer: A

[642-515 PDF Dumps](#)

[642-515 VCE Dumps](#)

[642-515 Exam Questions](#)



To Read the [Whole Q&As](#), please purchase the [Complete Version](#) from [Our website](#).

Try our product !

100% Guaranteed Success

100% Money Back Guarantee

365 Days Free Update

Instant Download After Purchase

24x7 Customer Support

Average 99.9% Success Rate

More than 800,000 Satisfied Customers Worldwide

Multi-Platform capabilities - [Windows](#), [Mac](#), [Android](#), [iPhone](#), [iPod](#), [iPad](#), [Kindle](#)

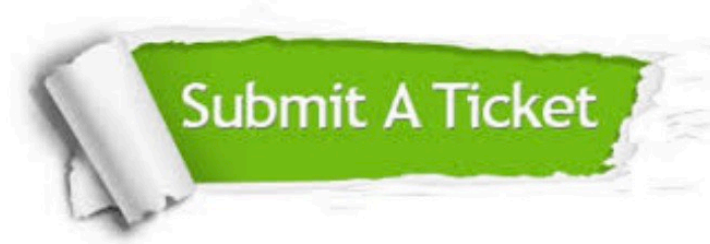
We provide exam PDF and VCE of Cisco, Microsoft, IBM, CompTIA, Oracle and other IT Certifications. You can view Vendor list of All Certification Exams offered:

<https://www.pass4lead.com/allproducts>

Need Help

Please provide as much detail as possible so we can best assist you.

To update a previously submitted ticket:



 <p>One Year Free Update Free update is available within One Year after your purchase. After One Year, you will get 50% discounts for updating. And we are proud to boast a 24/7 efficient Customer Support system via Email.</p>	 <p>Money Back Guarantee To ensure that you are spending on quality products, we provide 100% money back guarantee for 30 days from the date of purchase.</p>	 <p>Security & Privacy We respect customer privacy. We use McAfee's security service to provide you with utmost security for your personal information & peace of mind.</p>
---	---	--

Any charges made through this site will appear as Global Simulators Limited.

All trademarks are the property of their respective owners.

Copyright © pass4lead, All Rights Reserved.