



650-127^{Q&As}

Cisco Connected Grid (Engineer) Knowledge Verification

Pass Cisco 650-127 Exam with 100% Guarantee

Free Download Real Questions & Answers **PDF** and **VCE** file from:

<https://www.pass4lead.com/650-127.html>

100% Passing Guarantee
100% Money Back Assurance

Following Questions and Answers are all new published by Cisco
Official Exam Center

-  **Instant Download** After Purchase
-  **100% Money Back** Guarantee
-  **365 Days** Free Update
-  **800,000+** Satisfied Customers





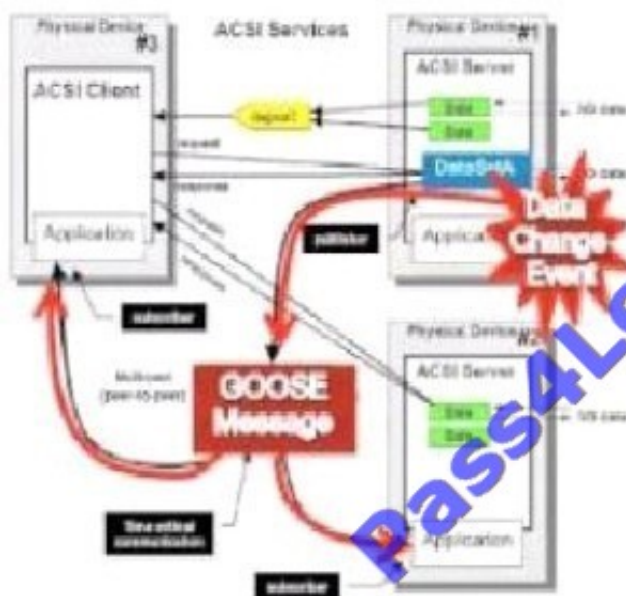
QUESTION 1

What is the correct time delay for a critical GOOSE Type-1 message?

- A. There is no specific time delay requirement.
- B. Fewer than 10 ms
- C. Less than 4 to 7 s
- D. Less than 3 to 10ms

Correct Answer: D

CGS 2500 Series GOOSE Messaging Overview



- GOOSE messaging is based on a **publisher / subscriber** model.
- GOOSE Type-1 messages are Time critical (**delay < 3-10 ms**)
(For Example "Trip" Message)
In this Case, Physical Device#2 (PD2) and Physical Device#3 (PD3) have **subscribed** to DataSet#A on Physical Device#1 (PD1)- **Publisher**
- When the GOOSE control block is configured on PD1 to enable GOOSE messaging (See next slide for details) to monitor DataSet#A, an associated VLAN and Cos marking is also configured on PD1 (In addition to the Dest Multicast MAC address to be used).
- This VLAN and CoS Marking is used on the Network- switches to restrict the flooding of GOOSE traffic

QUESTION 2

What are the two different types of console ports available? (Choose two.)

- A. Network



- B. USB
- C. RJ45
- D. Firewall

Correct Answer: BC

QUESTION 3

What is the benefit of phasor measurement unit data?

- A. Workstations clock sync
- B. improves grid stability
- C. Time tag on all event

Correct Answer: B

Use Case 3: Benefits and Main Requirements

Phasor Measurement Unit Data

Use Case	Description	Customer Benefits	Main Network Requirements
3	Substation Automation with Phasor Measurement Unit (PMU)	<ul style="list-style-type: none"> • Improves and stabilizes through real-time recovery following system event • PMU triggers alarms and provides recommendations for system operator • Accurately measures voltage and current waveforms on lines • Provides additional data for post-fault analysis 	<ul style="list-style-type: none"> • Fast network convergence • QoS: Prioritization and potentially very low latency (for real-time PMU data use) • Broadband and fiber • Network security

QUESTION 4

Which of these is a network requirement for remote workforce management?

- A. user authentication



- B. physical access control
- C. Cisco Telepresence
- D. Cisco Unified Communications Manager Express

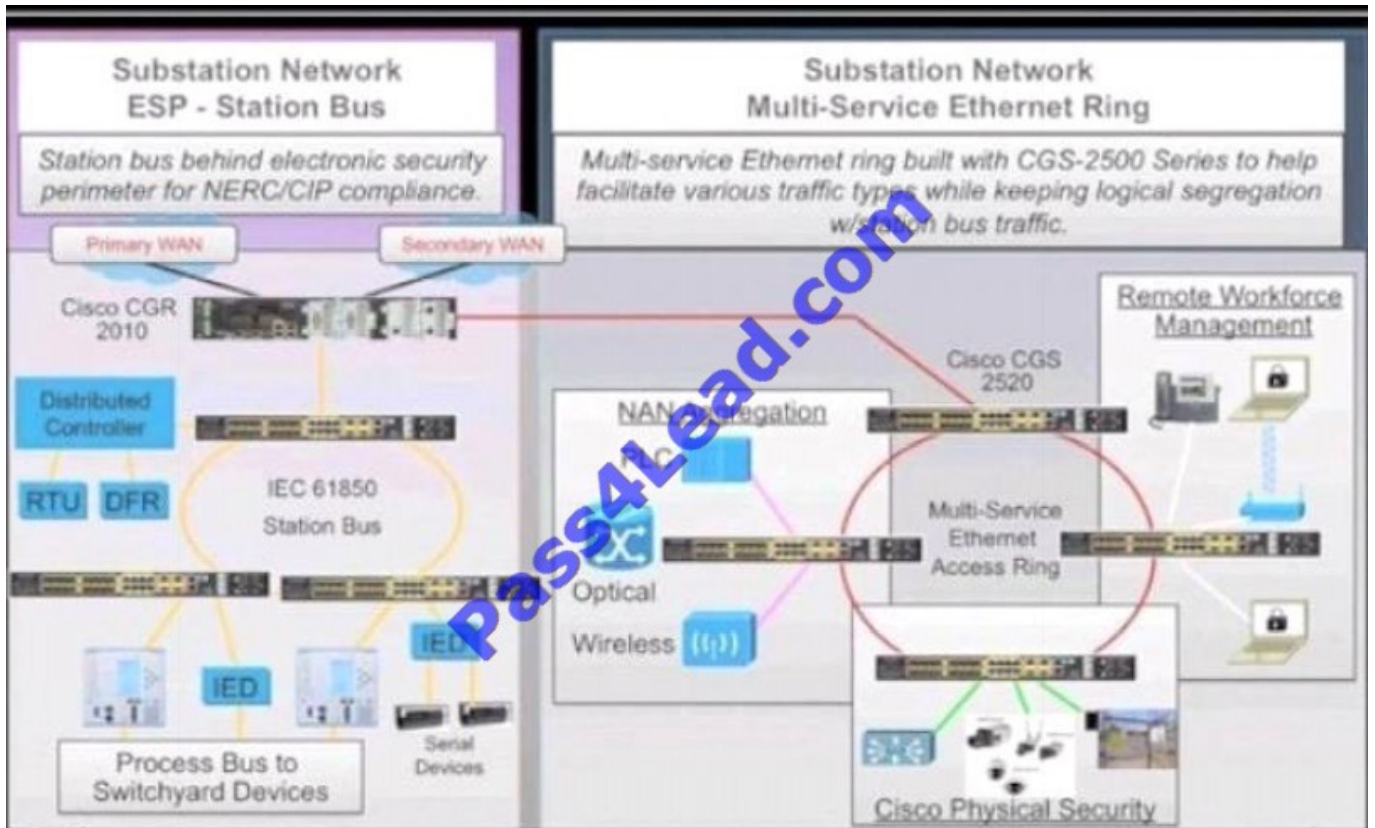
Correct Answer: A

Use Case 5: Benefits and Main Requirements

Remote Workforce Management

Use Case	Description	Customer Benefits	Main Network Requirements
5	Substation Remote Workforce Management	<ul style="list-style-type: none">• Internet and Intranet access from the field• Improved worker safety• Accelerated service restoration; easy access to information needed• Availability of current documents and drawings to a mobile work force	<ul style="list-style-type: none">• Security: User authentication• Segmentation: Isolation of critical data, restricting user access• QoS: Policing and marking

QUESTION 5



Which trend is driving the move toward Smart Grid?

- A. increases in supply, which requires the integration of distributed generation sources
- B. increasing carbon footprint
- C. compliance with regulations involving government funding and rules
- D. reduced demand, which causes an increase in demand and peak load

Correct Answer: C

[Latest 650-127 Dumps](#)

[650-127 Practice Test](#)

[650-127 Exam Questions](#)



To Read the [Whole Q&As](#), please purchase the [Complete Version](#) from [Our website](#).

Try our product !

100% Guaranteed Success

100% Money Back Guarantee

365 Days Free Update

Instant Download After Purchase

24x7 Customer Support

Average 99.9% Success Rate

More than 800,000 Satisfied Customers Worldwide

Multi-Platform capabilities - [Windows](#), [Mac](#), [Android](#), [iPhone](#), [iPod](#), [iPad](#), [Kindle](#)

We provide exam PDF and VCE of Cisco, Microsoft, IBM, CompTIA, Oracle and other IT Certifications. You can view Vendor list of All Certification Exams offered:

<https://www.pass4lead.com/allproducts>

Need Help

Please provide as much detail as possible so we can best assist you.

To update a previously submitted ticket:



 <p>One Year Free Update Free update is available within One Year after your purchase. After One Year, you will get 50% discounts for updating. And we are proud to boast a 24/7 efficient Customer Support system via Email.</p>	 <p>Money Back Guarantee To ensure that you are spending on quality products, we provide 100% money back guarantee for 30 days from the date of purchase.</p>	 <p>Security & Privacy We respect customer privacy. We use McAfee's security service to provide you with utmost security for your personal information & peace of mind.</p>
---	---	--

Any charges made through this site will appear as Global Simulators Limited.

All trademarks are the property of their respective owners.

Copyright © pass4lead, All Rights Reserved.