



70-210^{Q&As}

Installing, Configuring and Administering Microsoft Windows 2000 Professional

Pass Microsoft 70-210 Exam with 100% Guarantee

Free Download Real Questions & Answers **PDF** and **VCE** file from:

<https://www.pass4lead.com/70-210.html>

100% Passing Guarantee
100% Money Back Assurance

Following Questions and Answers are all new published by Microsoft Official Exam Center

- ⚙️ **Instant Download** After Purchase
- ⚙️ **100% Money Back** Guarantee
- ⚙️ **365 Days** Free Update
- ⚙️ **800,000+** Satisfied Customers



**QUESTION 1**

You are upgrading Computer1 and Computer2 from Windows NT Workstation 4.0 to Windows 2000 Professional. You successfully upgrade Computer1. During the upgrade of Computer2, a series of power outages interrupts the upgrade. You discover that the upgrade of Computer2 is incomplete. Furthermore, you find that Computer2 can no longer run Windows NT Workstation 4.0. Computer2 does not support booting from the Windows 2000 Professional CD-ROM. You decide to use Computer1 to help recover the failed upgrade. What should you do?

- A. On Computer1, copy the CD-ROM driver and the system files named Ntdetect.com, Ntbootdd.sys, Ntdll.dll, and Setupldr.bin to a formatted floppy disk. On Computer2, restart the upgrade by using the floppy disk. Then run Winnt32 /debug from the Windows 2000 Professional CD-ROM.
- B. On Computer1, copy the CD-ROM driver and the system files named Ntdetect.com, Ntbootdd.sys, Ntdll.dll, and Setupldr.bin to a formatted floppy disk. On Computer2, restart the upgrade by using the floppy disk. Then run Winnt32 /rx from the Windows 2000 Professional CD-ROM.
- C. On Computer1, run Makebt32.exe from the Bootdisk folder on the Windows 2000 Professional CD-ROM. On Computer2, restart the upgrade by using the newly created floppy disks.
- D. On Computer1, perform a remote installation from a network share. On Computer2, when the text portion of Setup has completed, resume the installation by using Setup Manager.

Correct Answer: C

QUESTION 2

You are the network administrator for your company. An employee named Bruno uses a Windows 2000 Professional portable computer. When he starts the computer, Windows 2000 prompts him to select in either a docked or an undocked mode. Bruno primarily works out of the office and does not use a docking station when he is in the office. He asks you to configure his portable computer so that it will not prompt him to select a docked or an undocked mode. What should you do?

- A. Modify the portable computers BIOS settings, and disable support for the docking station.
- B. Modify the portable computers hardware profiles, and remove the Docked hardware profile.
- C. Modify the portable computers device settings to disable the Unplug Devices icon in the system tray.
- D. Modify the portable computers hardware profiles, and position the Docked hardware profile at the top of the list of hardware profiles.

Correct Answer: B

QUESTION 3

Your Windows 2000 Professional computer has 10 shared folders that are available to other network users. A user reports that he cannot access a shared folder named ShareA. You want to respond to the user's problem as quickly as possible by using an administrative tool. However, you cannot remember the server location of ShareA. What should you do?

- A. Use Windows Explorer to display the file paths of your shared folders.

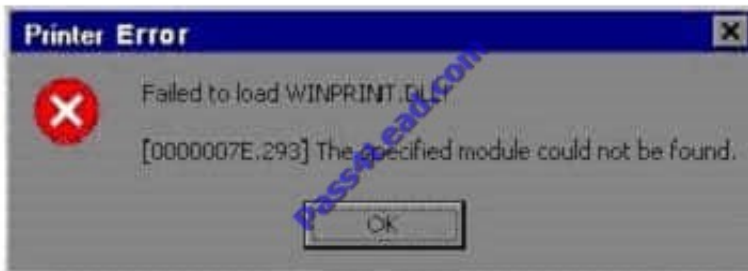


- B. Use Storage in Computer Management to view logical drive properties.
- C. Use Event Viewer in Computer Management to search for shared folder error messages.
- D. Use System Tools in Computer Management to display the file paths of your shared folders.

Correct Answer: D

QUESTION 4

You want to connect your Windows 2000 Professional computer to a new color laser printer. The printer is Plug and Play compliant. The printer is included on the current Hardware Compatibility List (HCL). You are a member of the Sales organizational unit (OU). You want to share the printer with other users in the Sales OU. You plug the printer into the LPT port on the back of the computer. You then attempt to install the 32-bit application printer software that came with the printer. During the installation, you receive an error message as shown in the exhibit. (Click the Exhibit button.) What should you do before you share the printer with other users in the Sales OU?

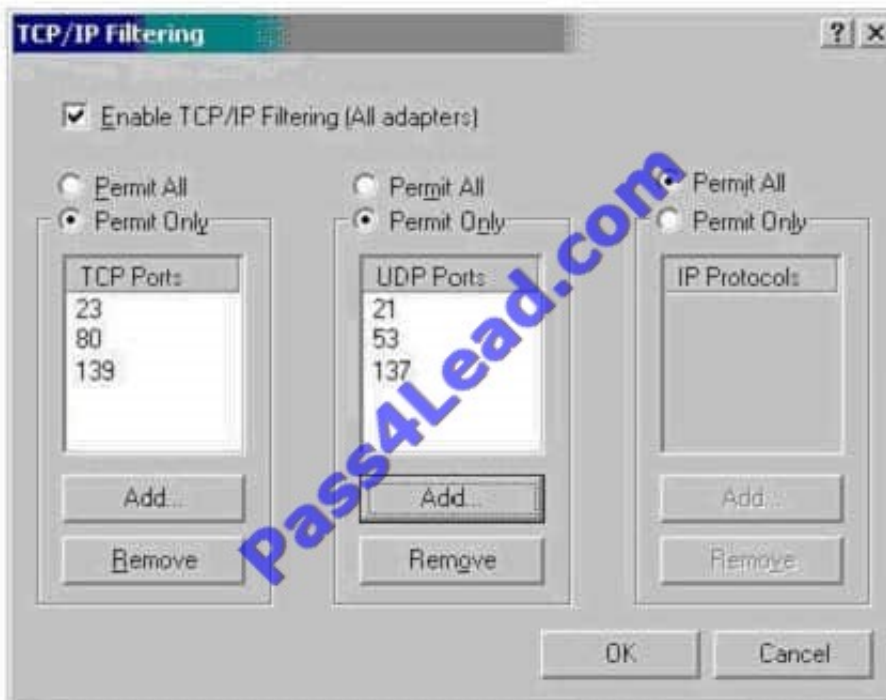


- A. Change the LPT port setting to enable legacy Plug and Play detection on your computer.
- B. Change the LPT port setting to bidirectional in the BIOS on your computer. Then reinstall the printer software.
- C. Connect the printer to another computer in the Sales OU. Then install the device drivers for the printer.
- D. Obtain and install the WDM-compliant device drivers and printing software for the printer.

Correct Answer: D

QUESTION 5

You configure your Windows 2000 Professional computer for Internet connection Sharing and for TCP/IP filtering as shown in the exhibit. (Click the Exhibit button.) You test your TCP/IP filtering configuration from another client computer. You can access Web sites, but you cannot access FTP sites. What should you do to be able to access FTP sites?



- A. Add Port 21 to the TCP Ports section.
- B. Add Port 138 to the TCP Ports section.
- C. Add Port 21 to the IP Ports section.
- D. Add Port 138 to the IP Ports section.

Correct Answer: A

[70-210 VCE Dumps](#)

[70-210 Practice Test](#)

[70-210 Braindumps](#)



To Read the [Whole Q&As](#), please purchase the [Complete Version](#) from [Our website](#).

Try our product !

100% Guaranteed Success

100% Money Back Guarantee

365 Days Free Update

Instant Download After Purchase

24x7 Customer Support

Average 99.9% Success Rate

More than 800,000 Satisfied Customers Worldwide

Multi-Platform capabilities - [Windows](#), [Mac](#), [Android](#), [iPhone](#), [iPod](#), [iPad](#), [Kindle](#)

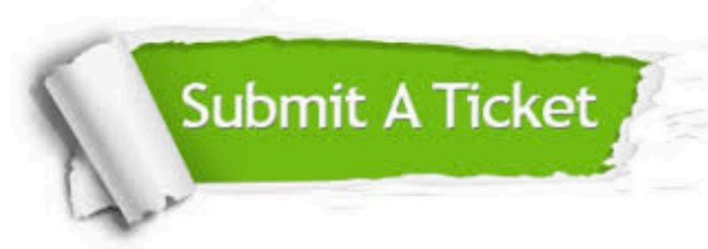
We provide exam PDF and VCE of Cisco, Microsoft, IBM, CompTIA, Oracle and other IT Certifications. You can view Vendor list of All Certification Exams offered:

<https://www.pass4lead.com/allproducts>

Need Help

Please provide as much detail as possible so we can best assist you.

To update a previously submitted ticket:



 <p>One Year Free Update Free update is available within One Year after your purchase. After One Year, you will get 50% discounts for updating. And we are proud to boast a 24/7 efficient Customer Support system via Email.</p>	 <p>Money Back Guarantee To ensure that you are spending on quality products, we provide 100% money back guarantee for 30 days from the date of purchase.</p>	 <p>Security & Privacy We respect customer privacy. We use McAfee's security service to provide you with utmost security for your personal information & peace of mind.</p>
---	---	--

Any charges made through this site will appear as Global Simulators Limited.

All trademarks are the property of their respective owners.

Copyright © pass4lead, All Rights Reserved.