



# 70-210<sup>Q&As</sup>

Installing, Configuring and Administering Microsoft Windows 2000 Professional

## Pass Microsoft 70-210 Exam with 100% Guarantee

Free Download Real Questions & Answers **PDF** and **VCE** file from:

<https://www.pass4lead.com/70-210.html>

100% Passing Guarantee  
100% Money Back Assurance

Following Questions and Answers are all new published by Microsoft Official Exam Center

-  **Instant Download** After Purchase
-  **100% Money Back** Guarantee
-  **365 Days** Free Update
-  **800,000+** Satisfied Customers



**QUESTION 1**

You are the administrator of your company's network. You attempt to install a printer driver on a Windows 2000 computer for a user named Linda. You receive the following error message: "Error 11 - Cannot install printer driver."The driver was originally downloaded from the printer manufacturer's Web site. You have successfully used the driver in the past on other Windows 2000 Professional computers.You want to configure Linda's computer to check for driver integrity and to allow you to install this printer driver.What should you do?

- A. Configure driver signing to display a message before installing an unsigned driver.
- B. Configure driver signing to ignore File Signature Verification. Create a Local Computer Policy to enable Windows File Protection.
- C. Use the Add Printer Driver wizard to install the driver. Create a Local Computer Policy to enable Windows File Protection.
- D. Use the Print troubleshooter. Configure the computer to prevent the installation of unsigned drivers.

Correct Answer: A

---

**QUESTION 2**

Your desktop computer has Windows 2000 Professional installed. You create a new dial-up connection to connect to the Internet. You configure the Internet connection to enable Internet Connection Sharing.After you configure the connection, you cannot see or connect to any shared resources on your local network. You want your computer to be able to connect to shared resources.What should you do?

- A. Configure the dial-up connection to disable shared access.
- B. Configure the dial-up connection to disable on-demand dialing.
- C. Disable data encryption in the new dial-up connection.
- D. Use the ipconfig command to release and renew your network TCP/IP address.

Correct Answer: D

---

**QUESTION 3**

You are upgrading Computer1 and Computer2 from Windows NT Workstation 4.0 to Windows 2000 Professional. You successfully upgrade Computer1. During the upgrade of Computer2, a series of power outages interrupts the upgrade.You discover that the upgrade of Computer2 is incomplete. Furthermore, you find that Computer2 can no longer run Windows NT Workstation 4.0. Computer2 does not support booting from the Windows 2000 Professional CD-ROM. You decide to use Computer1 to help recover the failed upgrade.What should you do?

- A. On Computer1, copy the CD-ROM driver and the system files named Ntdetect.com, Ntbootdd.sys, Ntdll.dll, and Setupldr.bin to a formatted floppy disk. On Computer2, restart the upgrade by using the floppy disk. Then run Winnt32 /debug from the Windows 2000 Professional CD-ROM.
- B. On Computer1, copy the CD-ROM driver and the system files named Ntdetect.com, Ntbootdd.sys, Ntdll.dll, and Setupldr.bin to a formatted floppy disk. On Computer2, restart the upgrade by using the floppy disk. Then run Winnt32



/rx from the Windows 2000 Professional CD-ROM.

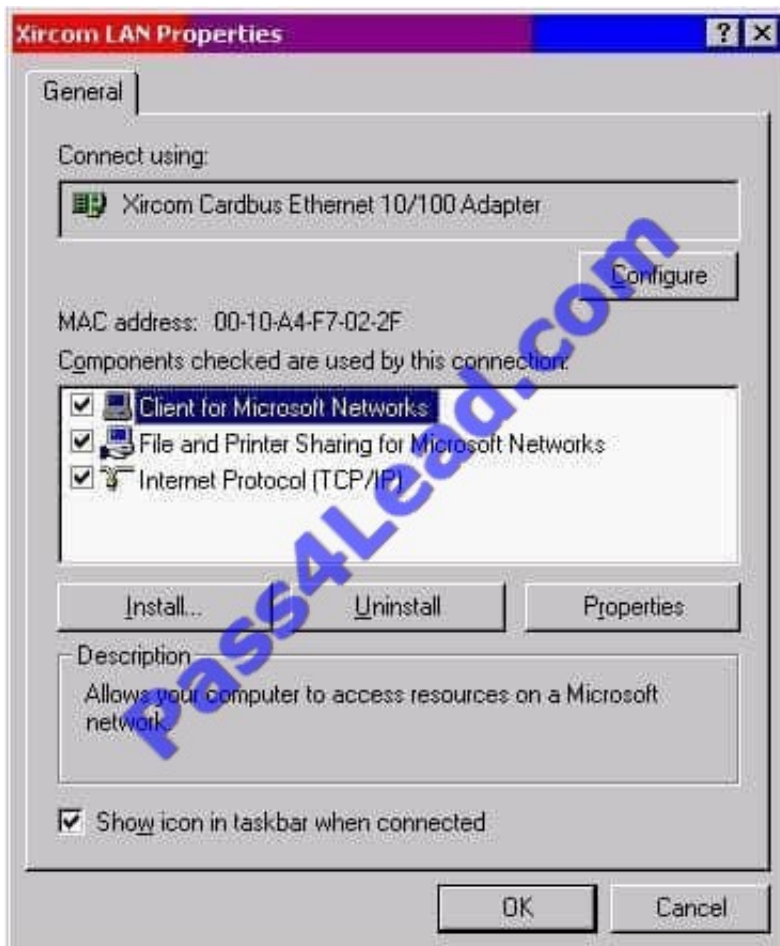
C. On Computer1, run Makebt32.exe from the Bootdisk folder on the Windows 2000 Professional CD-ROM. On Computer2, restart the upgrade by using the newly created floppy disks.

D. On Computer1, perform a remote installation from a network share. On Computer2, when the text portion of Setup has completed, resume the installation by using Setup Manager.

Correct Answer: C

#### QUESTION 4

You are the administrator of your company's network. You use your Windows 2000 Professional computer to transfer 20 large files. Each file is 100 MB in size. You want to copy the files from a UNIX server in your branch office to a computer running Microsoft SQL Server at the main office. When you copy the files by using Windows Explorer, the connection appears to time out and the file copy is aborted. You suspect that you are encountering a TCP/IP performance problem. Your network connection is shown in the Xircom LAN Properties dialog box in the exhibit. (Click the Exhibit button.) You want to monitor the performance of TCP/IP of your computer. What should you do?



A. Install the Network Monitor Agent. Use the Performance console to view all the counters of the TCP object.

B. Install the Network Monitor Agent. Use the Performance console to view the Fragmented Datagrams/ sec counter.

C. Install SNMP. Use the Performance console to view all the counters of the TCP object.



D. Install Simple TCP/IP Services. Use the Performance console to view the Fragmentation Failures counter.

Correct Answer: C

---

#### QUESTION 5

You want to upgrade 400 computers from Windows 95 to Windows 2000 Professional. Most of the computers in your company use the same hardware. However, several different peripheral devices are used throughout the company. You want to verify that all of the hardware in use is compatible with Windows 2000 Professional. You want to accomplish this with the least amount of administrative effort. What should you do?

- A. Create several different computer configurations. Install Windows 2000 Professional and enable driver signing.
- B. Create a bootable floppy disk that contains and automatically runs Winnt32.exe /CheckUpgradeOnlyQ. Send the floppy disk to each user on the network.
- C. Copy the contents of the Windows 2000 Professional CD-ROM to a network share. From the network share, modify your network logon scripts to run Winnt32.exe /Unattend:ReportOnly.
- D. Use Setup Manager to create a Setup.inf file. Add the entry ReportOnly=Yes to the [Win9xUpg] section of the answer file. Run Winnt32.exe /Unattend:Setup.inf on all of the different computer configurations.

Correct Answer: D

[Latest 70-210 Dumps](#)

[70-210 Practice Test](#)

[70-210 Exam Questions](#)



To Read the [Whole Q&As](#), please purchase the [Complete Version](#) from [Our website](#).

## Try our product !

100% Guaranteed Success

100% Money Back Guarantee

365 Days Free Update

Instant Download After Purchase

24x7 Customer Support

Average 99.9% Success Rate

More than 800,000 Satisfied Customers Worldwide

Multi-Platform capabilities - [Windows](#), [Mac](#), [Android](#), [iPhone](#), [iPod](#), [iPad](#), [Kindle](#)

We provide exam PDF and VCE of Cisco, Microsoft, IBM, CompTIA, Oracle and other IT Certifications. You can view Vendor list of All Certification Exams offered:

<https://www.pass4lead.com/allproducts>

## Need Help

Please provide as much detail as possible so we can best assist you.

To update a previously submitted ticket:



 <p><b>One Year Free Update</b> Free update is available within One Year after your purchase. After One Year, you will get 50% discounts for updating. And we are proud to boast a 24/7 efficient Customer Support system via Email.</p>	 <p><b>Money Back Guarantee</b> To ensure that you are spending on quality products, we provide 100% money back guarantee for 30 days from the date of purchase.</p>	 <p><b>Security &amp; Privacy</b> We respect customer privacy. We use McAfee's security service to provide you with utmost security for your personal information &amp; peace of mind.</p>
---	---	--

Any charges made through this site will appear as Global Simulators Limited.

All trademarks are the property of their respective owners.

Copyright © pass4lead, All Rights Reserved.